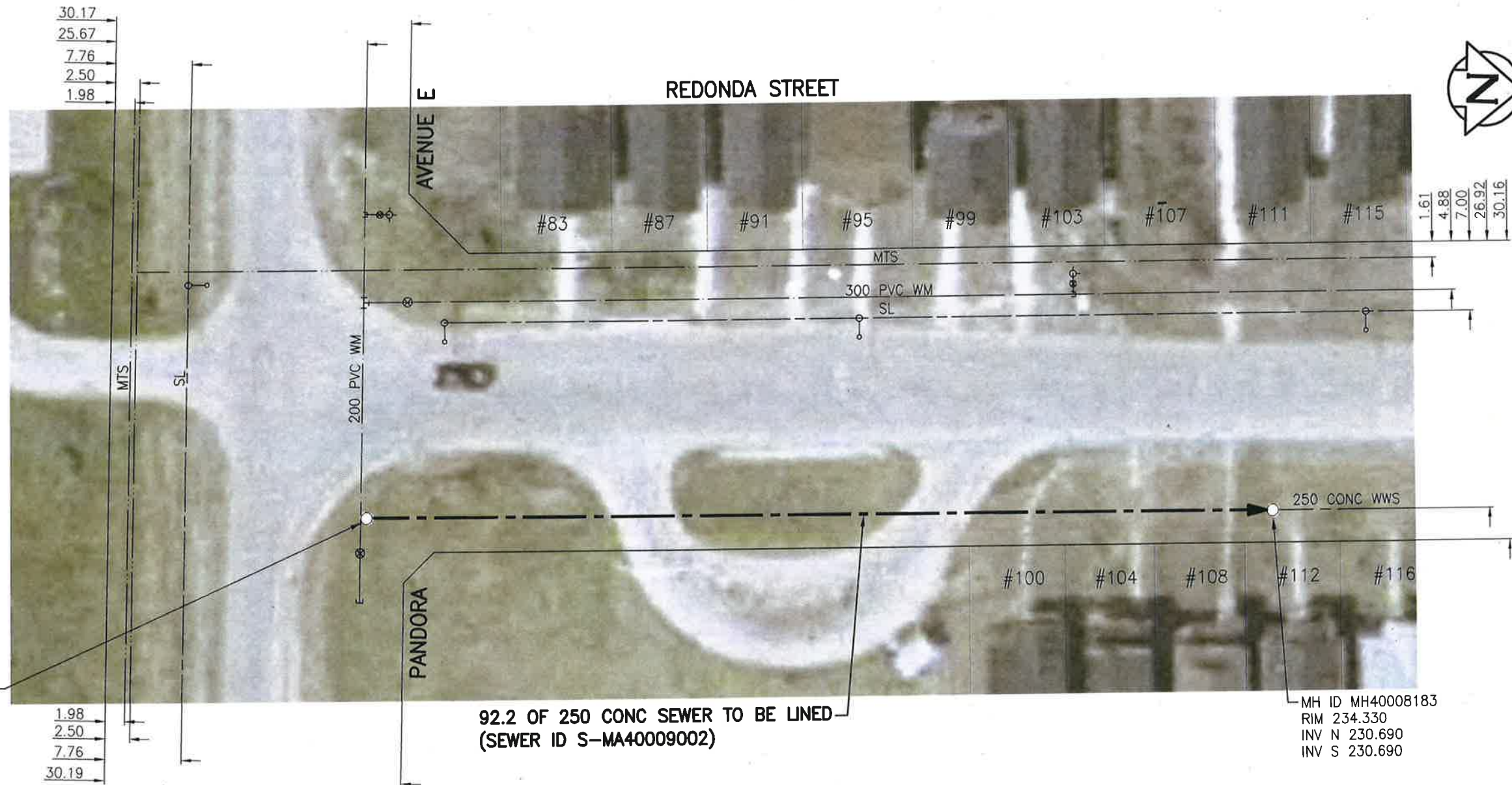


SEWER JUNCTION INFORMATION FROM SEWER VIDEO INSPECTION		
SEWER ID S-MA40009002		
DISTANCE FROM MH40008182		
DISTANCE	DIAMETER	CLOCK
19.0	150	10
20.0	150	9
43.4	150	10
44.8	150	10
63.8	150	10
65.2	150	2
68.1	150	10
75.5	150	2
76.8	150	10
84.5	150	2



MH ID MH40008182
RIM 234.300
INV S 231.100

MH ID MH40008183
RIM 234.330
INV N 230.690
INV S 230.690

92.2 OF 250 CONC SEWER TO BE LINED
(SEWER ID S-MA40009002)

WARNING

IF POWER EQUIPMENT OR EXPLOSIVES ARE TO BE USED FOR EXCAVATION ON THIS PROJECT THE CONTRACTOR MUST:
1) NOTIFY THE GAS COMPANY OF THE PROPOSED LOCATION OF EXCAVATION.
2) TAKE PRECAUTION TO AVOID DAMAGE TO GAS COMPANY INSTALLATIONS.
SEE PROVINCIAL REGULATION 140/92 FOR DETAILS

**ENGINEERS
GEOSCIENTISTS
MANITOBA**
Certificate of Authorization
Stantec Consulting Ltd.
No. 1301

METRIC
WHOLE NUMBERS INDICATE MILLIMETRES
DECIMALIZED NUMBERS INDICATE METRES
1:500
BID OPPORTUNITY NO. 1167-2018

LOCATION APPROVED UNDERGROUND STRUCTURES

SUPV. U/G STRUCTURES COMMITTEE DATE

NOTE:
LOCATION OF UNDERGROUND STRUCTURES AS SHOWN ARE BASED ON THE BEST INFORMATION AVAILABLE BUT NO GUARANTEE IS GIVEN THAT ALL EXISTING UTILITIES ARE SHOWN OR THAT THE GIVEN LOCATIONS ARE EXACT. CONFIRMATION OF EXISTENCE AND EXACT LOCATION OF ALL SERVICES MUST BE OBTAINED FROM THE INDIVIDUAL UTILITIES BEFORE PROCEEDING WITH CONSTRUCTION.

NO.	REVISIONS	DATE	BY
1	ISSUED FOR TENDER	19.01.02	RS

Stantec
905 Waverley Street, Winnipeg, Manitoba
Tel 204-489-5900 Fax 204-453-9012

DESIGNED BY	RS	CHECKED BY	RS
DRAWN BY	SC	APPROVED BY	RS
HOR. SCALE:	1:500	RELEASED FOR CONSTRUCTION:	
VERTICAL:		DATE	18.10.29

ENGINEER'S SEAL

CONSULTANT DRAWING NO. C-133

THE CITY OF WINNIPEG
WATER AND WASTE DEPARTMENT
2018 SEWER RENEWALS BY CIPP LINING
CONTRACT 7
REDONDA STREET
MH AT PANDORA AVE E TO
1ST MH N OF PANDORA AVE E

SHEET	OF
34	48
CAD FILE DRAWING NUMBER 18120c-131-922.dwg	
CITY DRAWING NUMBER 11869	