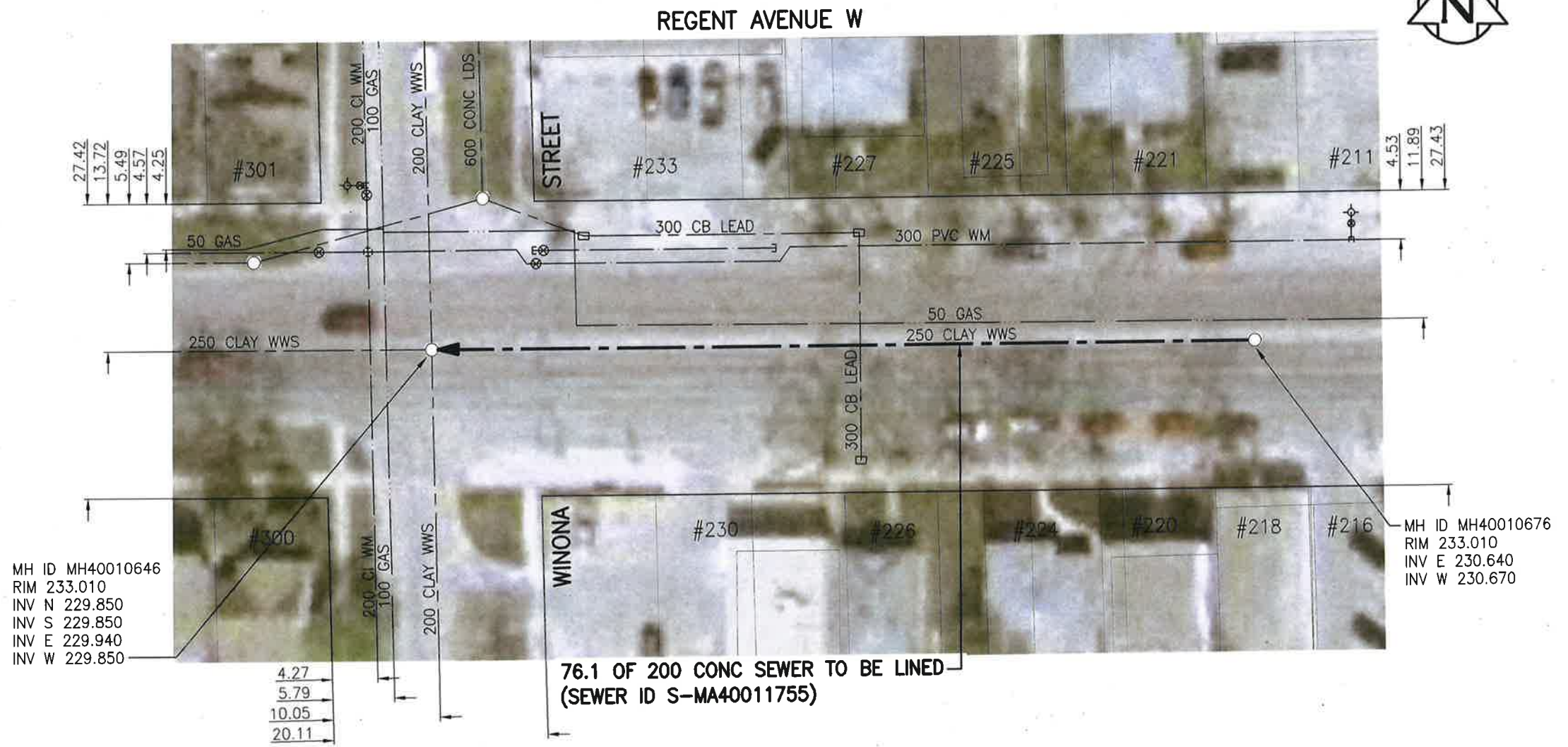


SEWER JUNCTION INFORMATION FROM SEWER VIDEO INSPECTION

SEWER ID S-MA40011755		
DISTANCE FROM MH40010676		
DISTANCE	DIAMETER	CLOCK
4.9	150	3
5.1	150	10
5.2	150	3
5.5	150	9
7.6	150	9
9.0	150	2
13.6	150	3
14.2	150	9
22.3	150	9
2.3	150	3
22.9	150	9
31.0	150	3
31.7	150	9
31.7	150	3
39.7	150	3
40.3	150	9
47.6	150	3
48.2	150	9
56.3	150	3
56.9	150	9
65.9	150	9
66.6	150	3



MH ID MH40010646
RIM 233.010
INV N 229.850
INV S 229.850
INV E 229.940
INV W 229.850

MH ID MH40010676
RIM 233.010
INV E 230.640
INV W 230.670

76.1 OF 200 CONC SEWER TO BE LINED (SEWER ID S-MA40011755)

WARNING

IF POWER EQUIPMENT OR EXPLOSIVES ARE TO BE USED FOR EXCAVATION ON THIS PROJECT THE CONTRACTOR MUST:
1) NOTIFY THE GAS COMPANY OF THE PROPOSED LOCATION OF EXCAVATION.
2) TAKE PRECAUTION TO AVOID DAMAGE TO GAS COMPANY INSTALLATIONS.
SEE PROVINCIAL REGULATION 140/92 FOR DETAILS

**ENGINEERS
GEOSCIENTISTS
MANITOBA**
Certificate of Authorization
Stantec Consulting Ltd.
No. 1301

METRIC
WHOLE NUMBERS INDICATE MILLIMETRES
DECIMALIZED NUMBERS INDICATE METRES
1:500 [Scale Bar]
BID OPPORTUNITY NO. 1167-2018

LOCATION APPROVED UNDERGROUND STRUCTURES		B.M. ELEV.	
SUPV. U/G STRUCTURES COMMITTEE	DATE		
NOTE: LOCATION OF UNDERGROUND STRUCTURES AS SHOWN ARE BASED ON THE BEST INFORMATION AVAILABLE BUT NO GUARANTEE IS GIVEN THAT ALL EXISTING UTILITIES ARE SHOWN OR THAT THE GIVEN LOCATIONS ARE EXACT. CONFIRMATION OF EXISTENCE AND EXACT LOCATION OF ALL SERVICES MUST BE OBTAINED FROM THE INDIVIDUAL UTILITIES BEFORE PROCEEDING WITH CONSTRUCTION.			
1	ISSUED FOR TENDER	19.01.02	RS
NO.	REVISIONS	DATE	BY

Stantec
905 Waverley Street, Winnipeg, Manitoba
Tel 204-489-5900 Fax 204-453-9012

DESIGNED BY	RS	CHECKED BY	RS
DRAWN BY	SC	APPROVED BY	RS
HOR. SCALE:	1:500	RELEASED FOR CONSTRUCTION:	
VERTICAL:		DATE	18.10.29

ENGINEER'S SEAL
PROVINCE OF MANITOBA
R.M. SHERLOCK
REGISTERED PROFESSIONAL ENGINEER
MEMBER 24045
CONSULTANT DRAWING NO. C-136

THE CITY OF WINNIPEG
WATER AND WASTE DEPARTMENT

2018 SEWER RENEWALS BY CIPP LINING
CONTRACT 7
REGENT AVENUE W
1ST MH E OF WINONA ST TO
MH AT WINONA ST

SHEET	OF
37	48
CAD FILE DRAWING NUMBER 18120c-131-922.dwg	
CITY DRAWING NUMBER 11872	

V:\112\active\111218120\0300_drawing\0302_sheet_files\02_civil\18120c-131-922.dwg