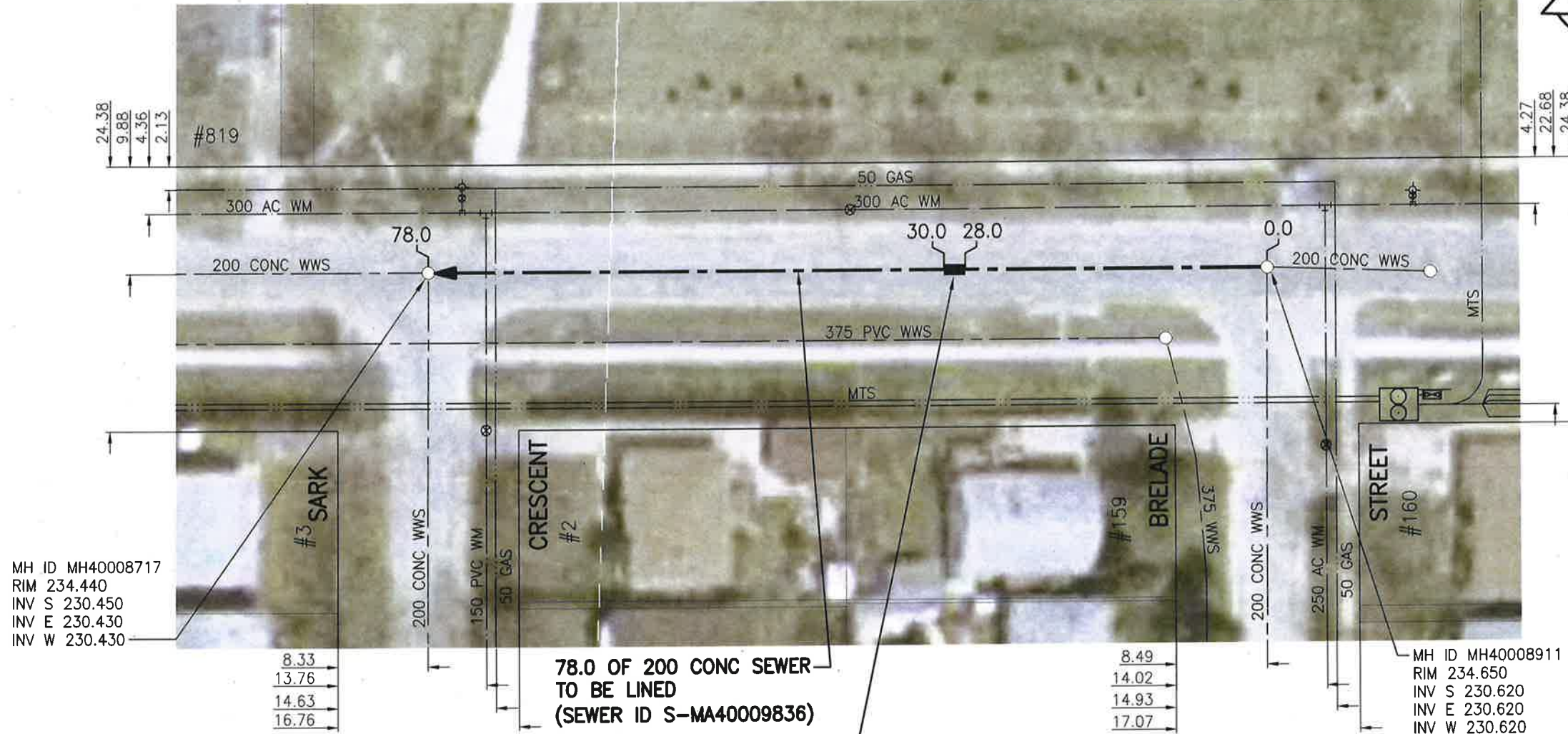


SEWER JUNCTION INFORMATION FROM SEWER VIDEO INSPECTION		
SEWER ID S-MA40009836		
DISTANCE FROM MH40008911		
DISTANCE	DIAMETER	CLOCK
38.7	150	3
65.9	150	10
67.1	150	3
73.8	150	2

VICTORIA AVENUE E



MH ID MH40008717
RIM 234.440
INV S 230.450
INV E 230.430
INV W 230.430

MH ID MH40008911
RIM 234.650
INV S 230.620
INV E 230.620
INV W 230.620

78.0 OF 200 CONC SEWER
TO BE LINED
(SEWER ID S-MA40009836)
2.0 OF 200 SDR35 PVC
SEWER REPAIR (SD-022A).
(TO BE DONE BY OTHERS)

WARNING

IF POWER EQUIPMENT OR EXPLOSIVES ARE TO BE USED FOR EXCAVATION ON THIS PROJECT THE CONTRACTOR MUST:
1) NOTIFY THE GAS COMPANY OF THE PROPOSED LOCATION OF EXCAVATION.
2) TAKE PRECAUTION TO AVOID DAMAGE TO GAS COMPANY INSTALLATIONS.
SEE PROVINCIAL REGULATION 140/92 FOR DETAILS

**ENGINEERS
GEOSCIENTISTS
MANITOBA**
Certificate of Authorization
Stantec Consulting Ltd.
No. 1301

METRIC
WHOLE NUMBERS INDICATE MILLIMETRES
DECIMALIZED NUMBERS INDICATE METRES
1:500
0 5 15 25m
BID OPPORTUNITY NO. 1167-2018

LOCATION APPROVED UNDERGROUND STRUCTURES

SUPV. U/G STRUCTURES COMMITTEE	DATE

NOTE:
LOCATION OF UNDERGROUND STRUCTURES AS SHOWN ARE BASED ON THE BEST INFORMATION AVAILABLE BUT NO GUARANTEE IS GIVEN THAT ALL EXISTING UTILITIES ARE SHOWN OR THAT THE GIVEN LOCATIONS ARE EXACT. CONFIRMATION OF EXISTENCE AND EXACT LOCATION OF ALL SERVICES MUST BE OBTAINED FROM THE INDIVIDUAL UTILITIES BEFORE PROCEEDING WITH CONSTRUCTION.

NO.	REVISIONS	DATE	BY
1	ISSUED FOR TENDER	19.01.02	RS

Stantec
905 Waverley Street, Winnipeg, Manitoba
Tel 204-489-5900 Fax 204-453-9012

DESIGNED BY	RS	CHECKED BY	RS
DRAWN BY	SC	APPROVED BY	RS
HOR. SCALE:	1:500	RELEASED FOR CONSTRUCTION:	
VERTICAL:		DATE	18.10.29

ENGINEER'S SEAL
PROVINCE OF MANITOBA
R.M. SHERLOCK
REGISTERED PROFESSIONAL ENGINEER
MEMBER 24045
CONSULTANT DRAWING NO. C-139

THE CITY OF WINNIPEG
WATER AND WASTE DEPARTMENT

2018 SEWER RENEWALS BY CIPP LINING
CONTRACT 7
VICTORIA AVENUE E
MH AT BERLADE ST TO
MH AT SARK CRES

SHEET	OF
40	48
CAD FILE DRAWING NUMBER 18120c-131-922.dwg	
CITY DRAWING NUMBER 11875	

V:\112\active\111218120\0300_drawing\0302_sheet_files\02_civil\18120c-131-922.dwg