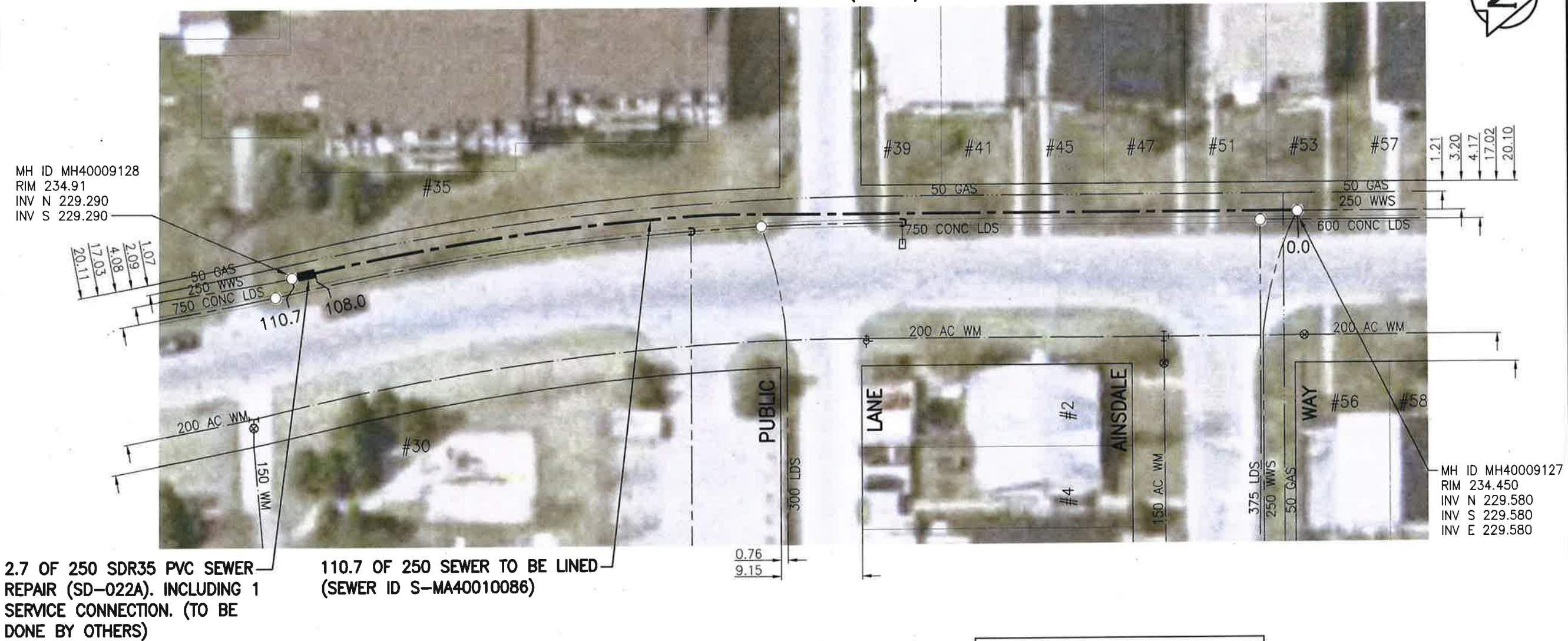


SEWER JUNCTION INFORMATION FROM SEWER VIDEO INSPECTION		
SEWER ID S-MA40010086		
DISTANCE FROM MH40009127		
DISTANCE	DIAMETER	CLOCK
20.6	150	3
37.6	150	2
108.9	150	10

WYNFORD DRIVE (W LEG)



MH ID MH40009128
RIM 234.91
INV N 229.290
INV S 229.290

MH ID MH40009127
RIM 234.450
INV N 229.580
INV S 229.580
INV E 229.580

2.7 OF 250 SDR35 PVC SEWER REPAIR (SD-022A). INCLUDING 1 SERVICE CONNECTION. (TO BE DONE BY OTHERS)

110.7 OF 250 SEWER TO BE LINED (SEWER ID S-MA40010086)

WARNING

IF POWER EQUIPMENT OR EXPLOSIVES ARE TO BE USED FOR EXCAVATION ON THIS PROJECT THE CONTRACTOR MUST:
1) NOTIFY THE GAS COMPANY OF THE PROPOSED LOCATION OF EXCAVATION.
2) TAKE PRECAUTION TO AVOID DAMAGE TO GAS COMPANY INSTALLATIONS.
SEE PROVINCIAL REGULATION 140/92 FOR DETAILS

**ENGINEERS
GEOSCIENTISTS
MANITOBA**
Certificate of Authorization
Stantec Consulting Ltd.
No. 1301

METRIC
WHOLE NUMBERS INDICATE MILLIMETRES
DECIMALIZED NUMBERS INDICATE METRES

1:500

BID OPPORTUNITY NO. 1167-2018

LOCATION APPROVED UNDERGROUND STRUCTURES		B.M. ELEV.	
SUPV. U/G STRUCTURES COMMITTEE	DATE		
NOTE: LOCATION OF UNDERGROUND STRUCTURES AS SHOWN ARE BASED ON THE BEST INFORMATION AVAILABLE BUT NO GUARANTEE IS GIVEN THAT ALL EXISTING UTILITIES ARE SHOWN OR THAT THE GIVEN LOCATIONS ARE EXACT. CONFIRMATION OF EXISTENCE AND EXACT LOCATION OF ALL SERVICES MUST BE OBTAINED FROM THE INDIVIDUAL UTILITIES BEFORE PROCEEDING WITH CONSTRUCTION.			
1	ISSUED FOR TENDER	19.01.02	RS
NO.	REVISIONS	DATE	BY

Stantec
905 Waverley Street, Winnipeg, Manitoba
Tel 204-489-5900 Fax 204-453-9012

DESIGNED BY	RS	CHECKED BY	RS
DRAWN BY	SC	APPROVED BY	RS
HOR. SCALE:	1:500	RELEASED FOR CONSTRUCTION	
VERTICAL:		DATE	18.10.29

ENGINEER'S SEAL

CONSULTANT DRAWING NO. C-146

THE CITY OF WINNIPEG
WATER AND WASTE DEPARTMENT

2018 SEWER RENEWALS BY CIPP LINING
CONTRACT 7
WYNFORD DRIVE (W LEG)
MH AT AINSDALE WAY TO
MH S OF AINSDALE WAY

SHEET	OF
47	48
CAD FILE DRAWING NUMBER 18120c-141-922.dwg	
CITY DRAWING NUMBER 11882	

V:\1112\active\111218120\0300_drawing\0302_sheet_files\02_civil\18120c-141-922.dwg