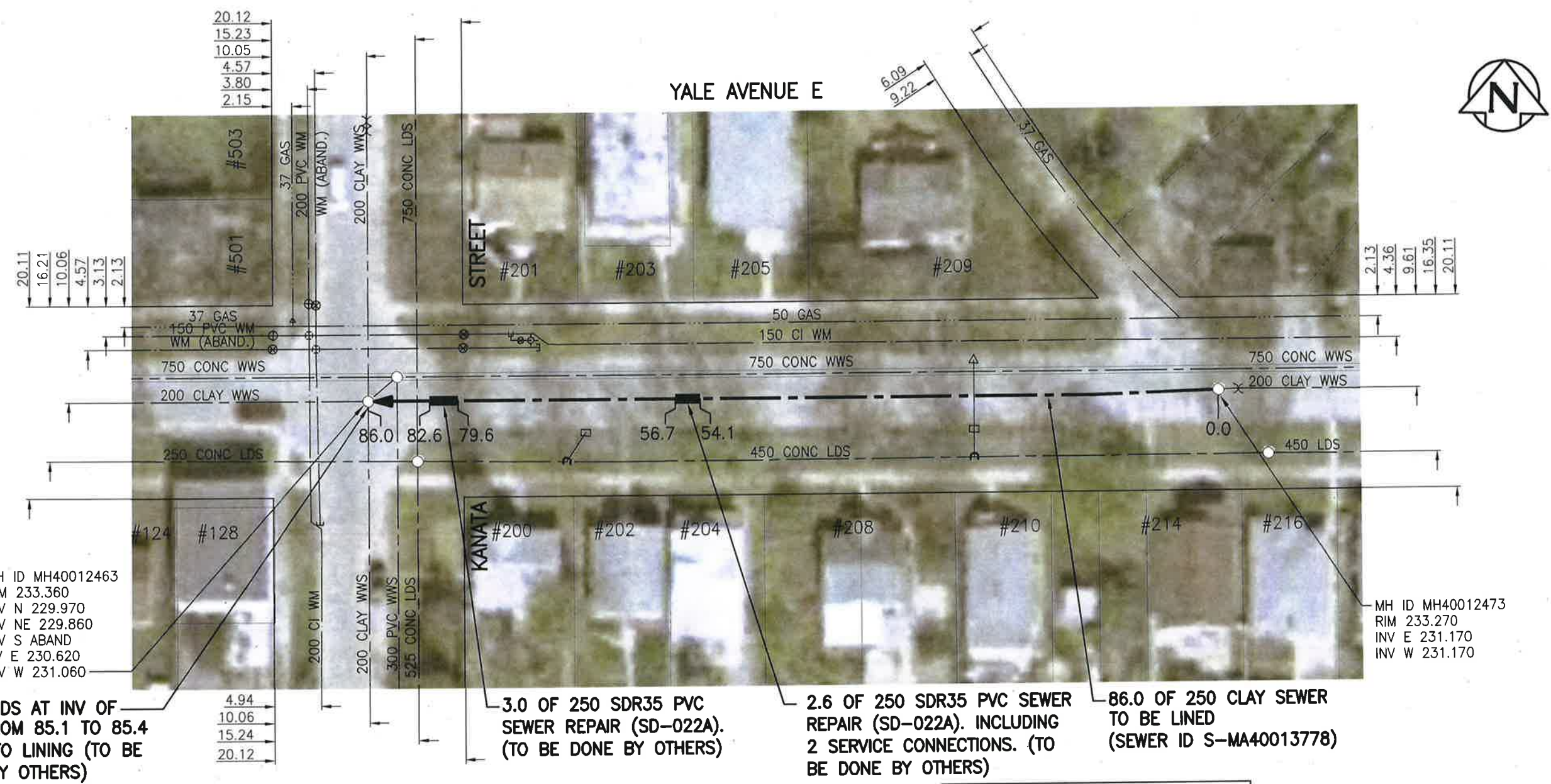


SEWER JUNCTION INFORMATION FROM SEWER VIDEO INSPECTION		
SEWER ID S-MA40013778		
DISTANCE FROM MH40012473		
DISTANCE	DIAMETER	CLOCK
14.2	150	9
24.2	150	9
35.1	150	9
39.2	150	3
44.7	150	9
51.0	150	3
51.8	150	9
55.3	150	3
55.5	150	10
63.3	150	3
63.6	150	10
75.9	150	3
76.5	150	9



FILL VOIDS AT INV OF PIPE FROM 85.1 TO 85.4 PRIOR TO LINING (TO BE DONE BY OTHERS)

3.0 OF 250 SDR35 PVC SEWER REPAIR (SD-022A). (TO BE DONE BY OTHERS)

2.6 OF 250 SDR35 PVC SEWER REPAIR (SD-022A). INCLUDING 2 SERVICE CONNECTIONS. (TO BE DONE BY OTHERS)

86.0 OF 250 CLAY SEWER TO BE LINED (SEWER ID S-MA40013778)

WARNING

IF POWER EQUIPMENT OR EXPLOSIVES ARE TO BE USED FOR EXCAVATION ON THIS PROJECT THE CONTRACTOR MUST:
 1) NOTIFY THE GAS COMPANY OF THE PROPOSED LOCATION OF EXCAVATION.
 2) TAKE PRECAUTION TO AVOID DAMAGE TO GAS COMPANY INSTALLATIONS.
 SEE PROVINCIAL REGULATION 140/92 FOR DETAILS

**ENGINEERS
 GEOSCIENTISTS
 MANITOBA**
 Certificate of Authorization
 Stantec Consulting Ltd.
 No. 1301

METRIC
 WHOLE NUMBERS INDICATE MILLIMETRES
 DECIMALIZED NUMBERS INDICATE METRES

1:500

BID OPPORTUNITY NO. 1167-2018

LOCATION APPROVED UNDERGROUND STRUCTURES

SUPV. U/G STRUCTURES COMMITTEE	DATE

NOTE:
 LOCATION OF UNDERGROUND STRUCTURES AS SHOWN ARE BASED ON THE BEST INFORMATION AVAILABLE BUT NO GUARANTEE IS GIVEN THAT ALL EXISTING UTILITIES ARE SHOWN OR THAT THE GIVEN LOCATIONS ARE EXACT. CONFIRMATION OF EXISTENCE AND EXACT LOCATION OF ALL SERVICES MUST BE OBTAINED FROM THE INDIVIDUAL UTILITIES BEFORE PROCEEDING WITH CONSTRUCTION.

NO.	REVISIONS	DATE	BY
1	ISSUED FOR TENDER	19.01.02	RS

Stantec
 905 Waverley Street, Winnipeg, Manitoba
 Tel 204-489-5900 Fax 204-453-9012

DESIGNED BY	RS	CHECKED BY	RS
DRAWN BY	SC	APPROVED BY	RS
HOR. SCALE:	1:500	RELEASED FOR CONSTRUCTION:	
VERTICAL:		DATE:	01/03/19
DATE	18.10.29		

ENGINEER'S SEAL

 CONSULTANT DRAWING NO.
C-147

THE CITY OF WINNIPEG
 WATER AND WASTE DEPARTMENT

2018 SEWER RENEWALS BY CIPP LINING
 CONTRACT 7
YALE AVENUE E
 1ST MH E OF KANATA ST TO
 MH AT KANATA ST

SHEET	OF
48	48
CAD FILE DRAWING NUMBER 18120c-141-922.dwg	
CITY DRAWING NUMBER 11883	

V:\1112\active\111218120\0300_drawing\0302_sheet_files\02_civil\18120c-141-922.dwg