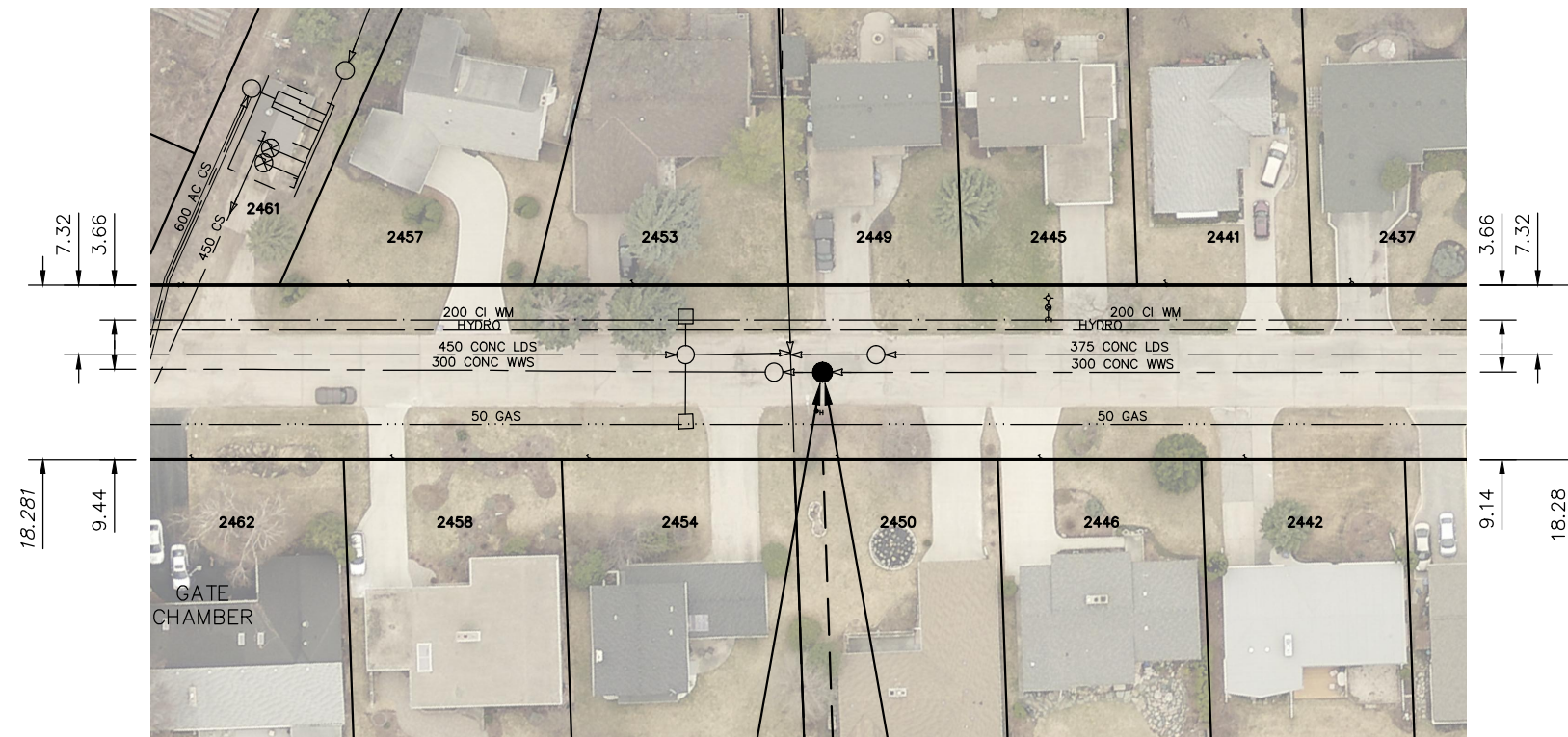


# ASSINIBOINE CRESCENT (S-LEG)



REMOVE EXIST MH & INSTALL 1200 MH (SD-010), INCLUDING 2-150 WWS CONNECTIONS.

S-MH20004919  
RIM 232.34  
INV N 229.10  
INV S 227.99

FOR INDEX SEE 11897

### WARNING

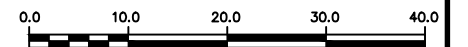
IF POWER EQUIPMENT OR EXPLOSIVES ARE TO BE USED FOR EXCAVATION ON THIS PROJECT THE CONTRACTOR MUST:

- 1) NOTIFY THE GAS COMPANY OF THE PROPOSED LOCATION OF EXCAVATION.
- 2) TAKE PRECAUTION TO AVOID DAMAGE TO GAS COMPANY INSTALLATIONS.

SEE PROVINCIAL REGULATION 210/72 FOR DETAILS

### METRIC

WHOLE NUMBERS INDICATE MILLIMETRES  
DECIMALIZED NUMBERS INDICATE METRES



### LOCATION APPROVED UNDERGROUND STRUCTURES

SUPV. U/G STRUCTURES COMMITTEE \_\_\_\_\_ DATE \_\_\_\_\_

#### NOTE:

LOCATION OF UNDERGROUND STRUCTURES AS SHOWN ARE BASED ON THE BEST INFORMATION AVAILABLE BUT NO GUARANTEE IS GIVEN THAT ALL EXISTING UTILITIES ARE SHOWN OR THAT THE GIVEN LOCATIONS ARE EXACT. CONFIRMATION OF EXISTENCE AND EXACT LOCATION OF ALL SERVICES MUST BE OBTAINED FROM THE INDIVIDUAL UTILITIES BEFORE PROCEEDING WITH CONSTRUCTION.

B.M. ELEV.		NO.		REVISIONS		DATE		BY	

DESIGNED BY	MJK	CHECKED BY	SC
DRAWN BY	AJ	APPROVED BY	KZ
SCALE:	1:750	RELEASED FOR CONSTRUCTION	K.ZUREK
HORIZONTAL		DATE	2019 01 08
VERTICAL		DATE	2019 01 08

ENGINEER'S SEAL

ORIGINAL SIGNED BY S.R.J COURNOYER 19/01/08



**THE CITY OF WINNIPEG**  
WATER AND WASTE DEPARTMENT  
ENGINEERING DIVISION

2018 SEWER MAIN RENEWALS  
MANHOLE REPLACEMENT  
**ASSINIBOINE CRESCENT (S-LEG)**  
1ST MH W OF ASSINIBOINE CRESCENT (E-LEG)

SHEET 3 OF 28  
CITY DRAWING NUMBER  
11898