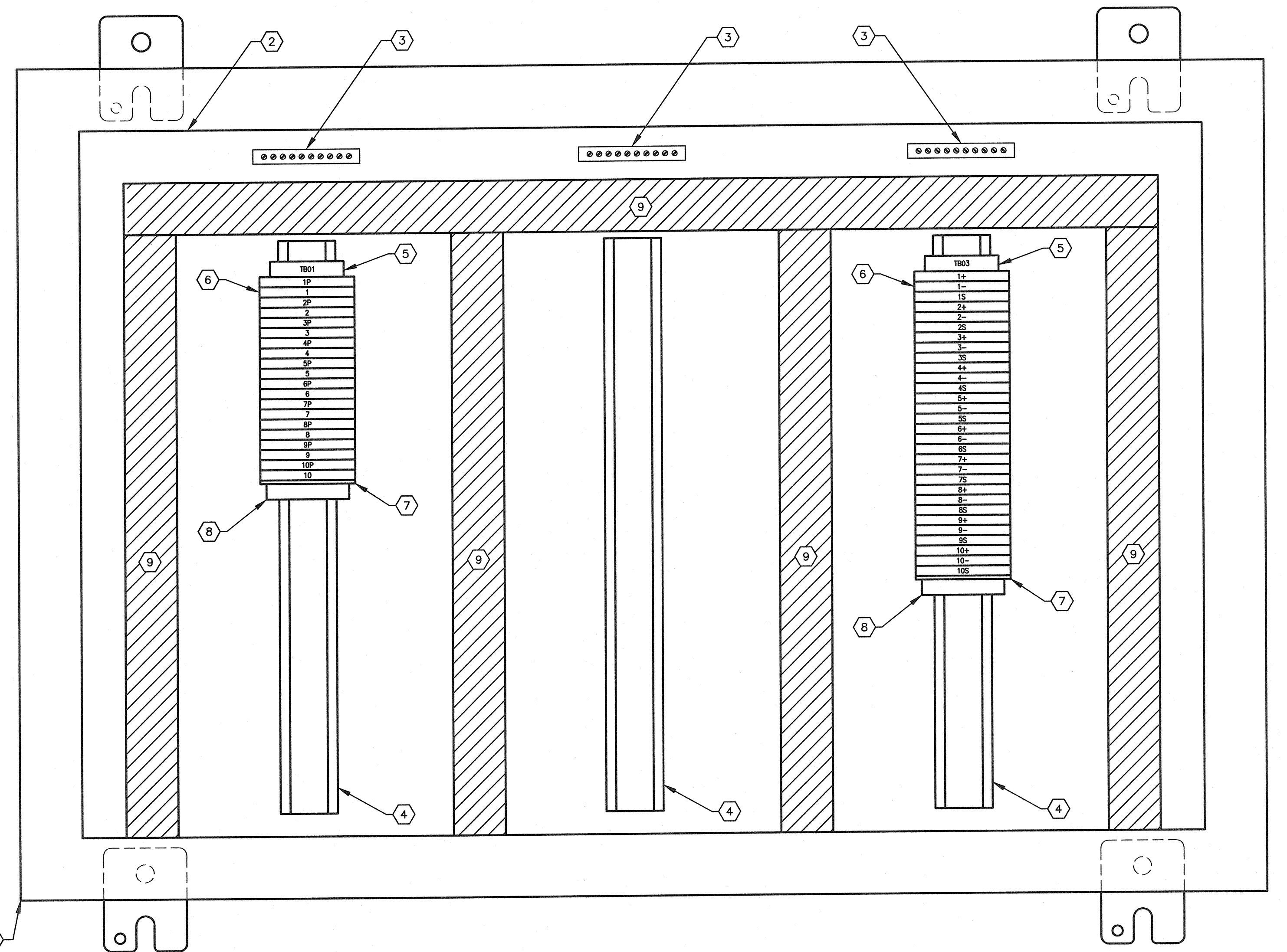


REMOTE TERMINAL UNIT (RTU)  
MARSHALLING PANEL

**EXTERIOR PANEL VIEW**  
SCALE: 1 : 2



**INTERIOR PANEL VIEW**  
SCALE: 1 : 2

**BILL OF MATERIAL**

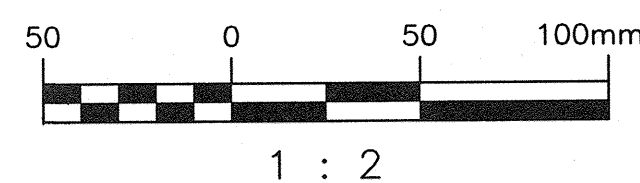
| ITEM | QTY      | DESCRIPTION                                     | MANUFACTURER    | CATALOG NUMBER |
|------|----------|---|-----------------|----------------|
| 1    | 1        | SINGLE-DOOR TYPE 12 & 13 WALL-MOUNTED ENCLOSURE | HOFFMAN         | A302006LP      |
| 2    | 1        | BACKPAN   | HOFFMAN         | A30P20         |
| 3    | 3        | GROUND BAR, 10 TAPS                             | ILSCO           | D167-10        |
| 4    | AS REQ'D | 35mm DIN RAIL                                   | PHOENIX CONTACT | 0801733        |
| 5    | AS REQ'D | TERMINAL BLOCK MARKER                           | PHOENIX CONTACT | 1004348        |
| 6    | AS REQ'D | FEED-THROUGH TERMINAL                           | PHOENIX CONTACT | 3046184        |
| 7    | AS REQ'D | TERMINAL END PLATE                              | PHOENIX CONTACT | 3047141        |
| 8    | AS REQ'D | TERMINAL END CLAMP                              | PHOENIX CONTACT | 1201442        |
| 9    | AS REQ'D | NARROW SLOT WIRING DUCT, 1.25" x 2.12"          | PANDUIT         | -              |
| 10   | AS REQ'D | LAMACOID, WHITE WITH BLACK TEXT                 | -               | -              |

**GENERAL NOTES:**

- WHERE MANUFACTURER AND MODEL ARE SPECIFIED, SUBSTITUTIONS MUST BE APPROVED IN ACCORDANCE WITH B7.
- CONNECT ALL INCOMING GROUND WIRES TO GROUND BAR.
- PROVIDE WIRE BARREL FERULES FOR ALL WIRING.
- ALL TERMINAL BLOCKS SHALL BE NUMBERED AS SHOWN, COMPLETE WITH GROUP LABELING.

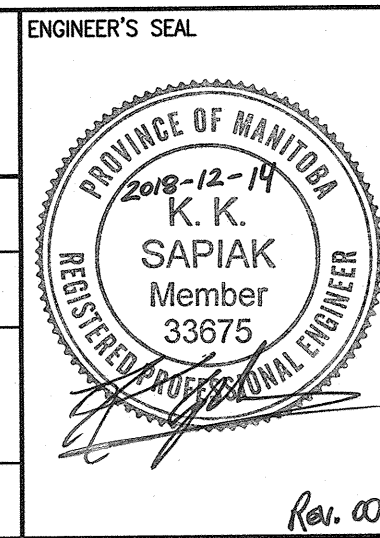
LAST SAVE: 2019/01/02 9:46am  
 PATH: M:\57381\4\ENG\460\DD - General DWG\1-0179F-A001-001.dwg

|                     |   |
|---------------------|---|
| 1-0179F-E0008       | ELECTRICAL PLAN LAYOUT MAIN AND LOWER LEVEL FLOOR |
| 1-0179F-A0008       | RTU MARSHALLING PANEL CONNECTION DIAGRAM          |
| 1-0179A-A200 - A224 | ROLAND FLOOD STATION - RTU DRAWINGS               |
| DRAWING NUMBER      | REFERENCE DRAWINGS                                |



| NO. | REVISIONS                          | DATE       | DESIGN | CHECK |
|-----|------------------------------------|------------|--------|-------|
| 00  | ISSUED FOR TENDER AND CONSTRUCTION | 2018/12/14 | KS     | BC    |

|                  |                         |
|------------------|-------------------------|
|                  |                         |
| DESIGNED BY:     | CHECKED BY:             |
| K. SAPIAK        | B. CLEVEN               |
| DRAWN BY:        | APPROVED BY:            |
| K. SAPIAK        | B. CLEVEN               |
| SCALE:           | ISSUED FOR CONSTRUCTION |
| 1 : 2            | BY: K. ZUREK            |
| DATE: 2018/09/25 | DATE: 2018/12/14        |
| CONSULTANT NO.:  |                         |



|  |                 |
|--|-----------------|
|  |                 |
| THE CITY OF WINNIPEG<br>WATER AND WASTE DEPARTMENT                                       |                 |
| ROLAND FLOOD PUMPING STATION<br>2019 UPGRADES<br>RTU MARSHALLING PANEL<br>LAYOUT DIAGRAM |                 |
| CITY DRAWING NUMBER  | SHEET REV. SIZE |
| 1-0179F-A0001  | 001 00 A1       |