

**PARTIAL MAIN FLOOR PLAN**  
 SCALE: 1:20

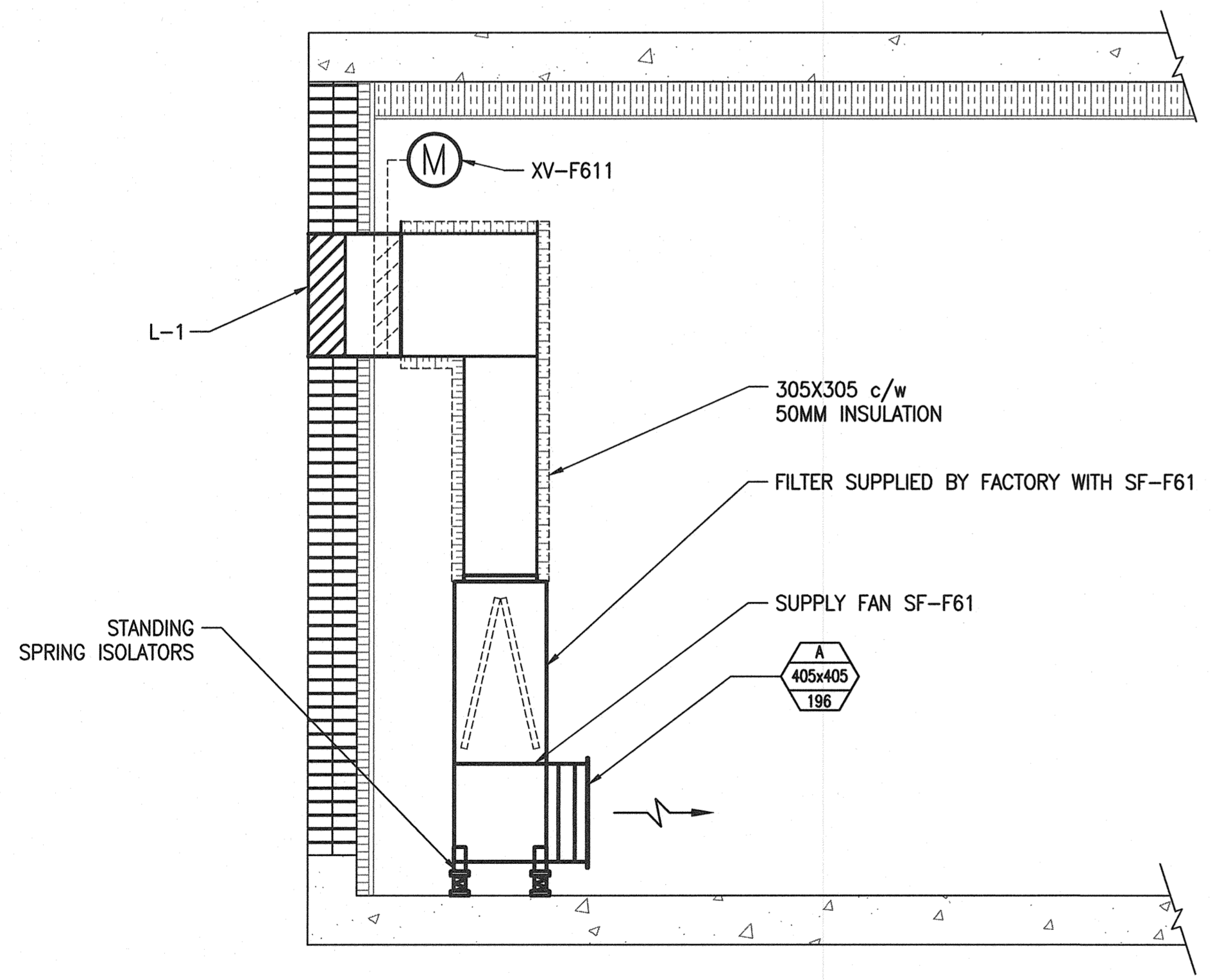
**LEGEND:**

	EXISTING		MOTORIZED DAMPER
	NEW WORK		BALANCE DAMPER
	EXISTING TO BE REMOVED		FIRE EXTINGUISHER
	TAG SIZE		FLOW (L/S)

**DESIGN CRITERIA:**  
 THE BUILDING ENVIRONMENTAL CONTROL SYSTEMS SHOWN ON THESE DRAWINGS HAVE BEEN DESIGNED TO THE REQUIREMENTS OF NFPA 820 AND THE MANITOBA BUILDING CODE AND VENTILATED AT 8 AIR CHANGES PER HOUR IN THE SUMMER. AND 2 AIR CHANGES PER HOUR IN THE WINTER, MORE SPECIFICALLY AS FOLLOWS:

- OUTDOOR CONDITIONS OF -33°C IN WINTER.
- INDOOR CONDITIONS OF 15°C IN WINTER.

- NOTES**
- 1 SUPPLY AND INSTALL NEW COOLING FAN, SF-F61, C/W FILTER, FIL-F61 AND ECM MOTOR.
  - 2 SUPPLY AND INSTALL NEW UNIT HEATER, UH-F65, C/W WALL-MOUNTED THERMOSTAT, TSL-F651.
  - 3 SUPPLY AND INSTALL NEW LOUVERS. REFER TO SCHEDULE.
  - 4 SUPPLY AND INSTALL NEW DAMPERS. REFER TO SCHEDULE.
  - 5 SUPPLY AND INSTALL NEW FIRE EXTINGUISHER. REFER TO SCHEDULE.



**PARTIAL SECTION**  
 SCALE: 1:20

**FAN SCHEDULE**

TAG	SERVICE	FLOW (L/s)	ESP (PA)	MOTOR (kW)	VOLTS/PH	MOTOR TYPE	DESCRIPTION	NOTES
SF-F61/FIL-F61	SUPPLY AIR	196	175	0.37	120/1ø	ECM	GREENHECK SQ-98-VG	SIDE DISCHARGE C/W FACTORY SUPPLIED FILTER BOX, MERV 8 FILTER & TWO SPEED CONTROLLER

**LOUVER SCHEDULE**

TAG	SERVICE	SIZE (mm)	ROUGH OPENING (mm)	MAKE AND MODEL
L-1	VENTILATION SUPPLY	865x508	SHOWN BY CIVIL	E.H. PRICE ZE 439
L-2	RELIEF	865x280	SHOWN BY CIVIL	E.H. PRICE ZE 439

**GRILLE SCHEDULE**

TAG	MAKE & MODEL
A	PRICE 610/F/L/A

**FIRE EXTINGUISHER SCHEDULE**

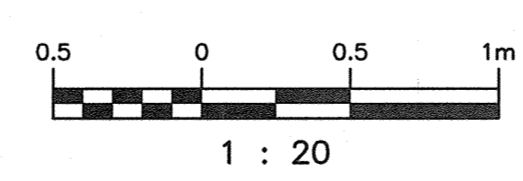
TAG	RATING/WEIGHT (MINIMUM)	TYPE	COMMENT
FEX-F1	2A, 5BC, 10LB (4.5 KG)	DRY CHEMICAL	NEW

**UNIT HEATER SCHEDULE**

TAG	SERVICE	POWER	AIRFLOW (L/s)	CAPACITY (kW)	VOLTS/PH	NOTES
UH-F65	ELECTRICAL ROOM	ELECTRIC	650	15	575/3	OUELLET OASU15036

**DAMPER SCHEDULE**

TAG	SERVICE	AIRFLOW (L/s)	SIZE (mm)	BLADE TYPE	MOUNT	ACTUATOR	MIN. REQ. TORQUE (N.m)	FAIL POSITION	DESCRIPTION
XV-F611	SUPPLY	196	865x508	PB	FLANGE TO DUCT	BELIMO ON/OFF	1.9	OPEN	TAMCO 9000 SC
XV-F612	GRAVITY RELIEF	196	865x280		REAR FLANGE	N/A	N/A		TAMCO 7000



 SNC-Lavalin Inc. 148 Nature Park Way Winnipeg, MB, Canada R3P 0X7 204-786-8080	DESIGNED BY: H. OJO	CHECKED BY: S. NORSWORTHY		 ROLAND FLOOD PUMPING STATION 2019 UPGRADES MECHANICAL PLAN, SECTION AND SCHEDULES
	DRAWN BY: M. GAUDINO	APPROVED BY: B. CLEVEN		
SCALE: 1:20		DATE: 2018-10-05		CITY DRAWING NUMBER: 1-0179F-M0001
NO. REVISIONS		DATE DESIGN CHECK		