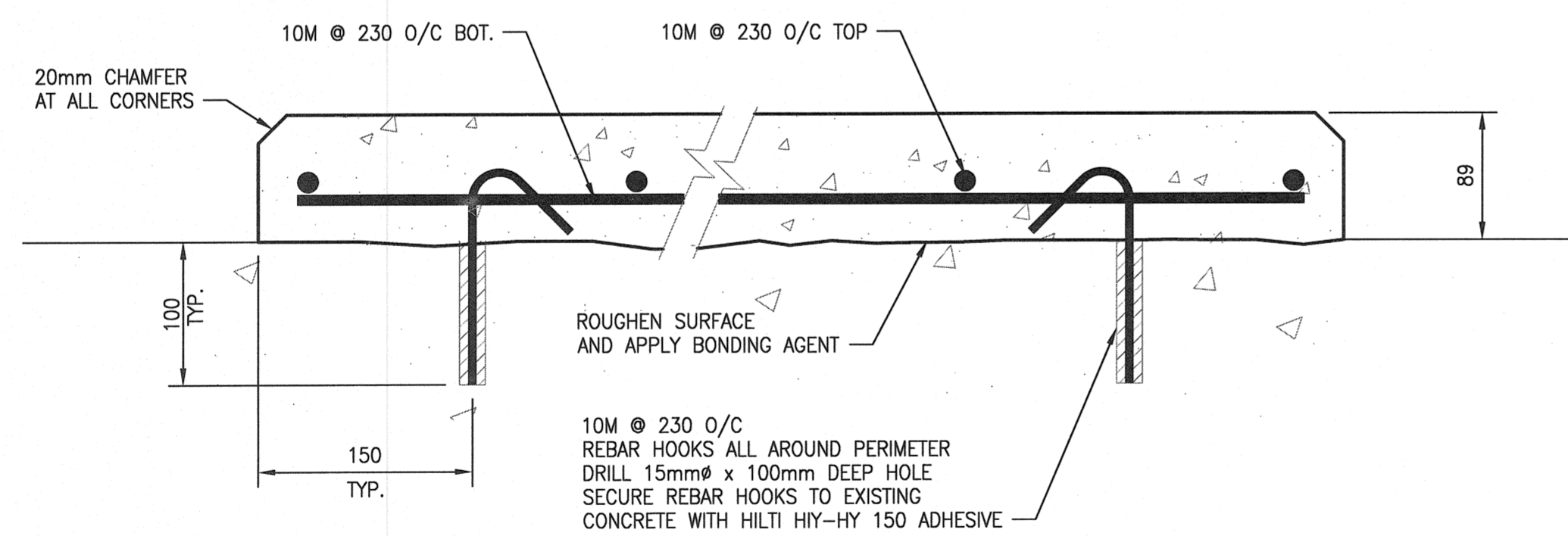


PLAN: HOUSEKEEPING PAD
SCALE: N.T.S



SECTION: HOUSEKEEPING PAD
SCALE: N.T.S

GENERAL NOTES:

DESIGN LOAD

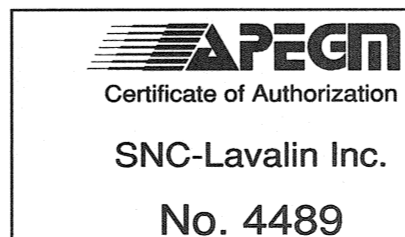
1. THE HOUSEKEEPING PAD SHOWN IS NOT STRUCTURAL. THE SUPPORTING STRUCTURE UPON WHICH THE HOUSEKEEPING PAD IS INSTALLED SHALL BE CAPABLE OF SUPPORTING ALL LOADS AND DYNAMIC EFFECTS.
2. THE HOUSEKEEPING PAD HAS NOT BEEN DESIGNED FOR CORROSIVE ENVIRONMENTS.

CONCRETE

1. ALL MATERIALS AND WORKMANSHIP SHALL CONFORM TO CSA STANDARD CSA A23.1 AND CSA A23.2 INCLUDING HEATING/HOARDING AND REQUIREMENTS FOR COLD WEATHER CONCRETING.
2. CONCRETE SHALL BE READY MIXED, CONFORMING TO CSA A23.1 (ALTERNATIVE 1), AND AS NOTED HEREIN:
CEMENT TYPE: GU
CONCRETE COMPRESSIVE STRENGTH @ 28 DAYS: 30 MPa
MAXIMUM AGGREGATE SIZE: 20 MM
MAXIMUM SLUMP: 100 MM
AIR CONTENT: 0% TO 3%
W/C RATIO: 0.45 MAXIMUM
CLASS OF SULPHATE AND CHLORIDE EXPOSURE: S-3 AND C-3
3. REINFORCING STEEL SHALL BE NEW BILLET GRADE STEEL MEETING THE REQUIREMENT OF CSA G30.18, GRADE 400.
4. SUPPORT REINFORCING STEEL ON SUFFICIENT SUPPORT CHAIRS TO MAINTAIN CONCRETE COVER OF 50mm.
5. REMOVE ALL LOOSE AND DELETERIOUS MATERIAL FROM REINFORCING STEEL.
6. TOLERANCES SHALL BE AS STIPULATED IN ACI 315.
7. SATURATE THE CONCRETE SURFACE FOR ONE HOUR PRIOR TO APPLYING THE BONDED CONCRETE TOPPING. PROVIDE A SATURATED SURFACE DRY CONDITION.
8. APPLY LATEX BONDING AGENT IN ACCORDANCE WITH MANUFACTURER'S PRINTED INSTRUCTIONS. BONDING AGENT TO BE DARAWELD 'C'.
9. PROVIDE A WET 'BURLAP' CURE FOR 7 DAYS MIN.
10. EXPOSED CONCRETE SHALL BE SEALED WITH MEADOWS SEALTIGHT CS-309.
11. ALL WORK TO BE EXECUTED IN A NEAT WORKMANLIKE MANNER.

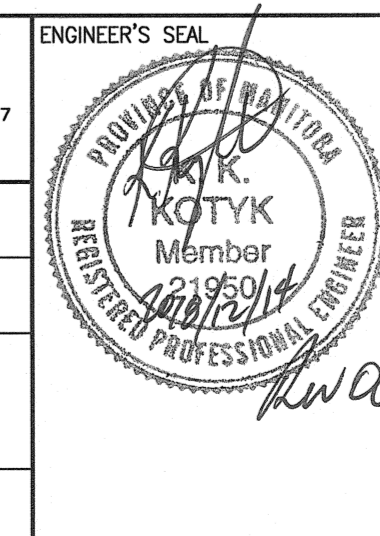
REFERENCE

1. REFER TO ELECTRICAL DRAWINGS FOR LOCATION AND DIMENSIONS OF HOUSEKEEPING PAD(S).



00	ISSUED FOR TENDER AND CONSTRUCTION	2018/12/14	KK	RD
NO.	REVISIONS	DATE	DESIGN	CHECK

 SNC-LAVALIN INC. 148 Nature Park Way Winnipeg, MB, Canada R3P 0X7 204-786-8080	
DESIGNED BY: K. KOTYK	CHECKED BY: R. DIONISIO
DRAWN BY: W. LOPEZ	APPROVED BY: B. CLEVEN
SCALE: N.T.S.	ISSUED FOR CONSTRUCTION BY: K. ZUREK
DATE: 2018/11/07	DATE: 2018/12/14
CONSULTANT NO.:	



THE CITY OF WINNIPEG
WATER AND WASTE DEPARTMENT

ROLAND FLOOD PUMPING STATION
2019 UPGRADES
HOUSEKEEPING PADS
NEW WORK

CITY DRAWING NUMBER	SHEET	REV.	SIZE
1-0179F-S0002	001	00	A1