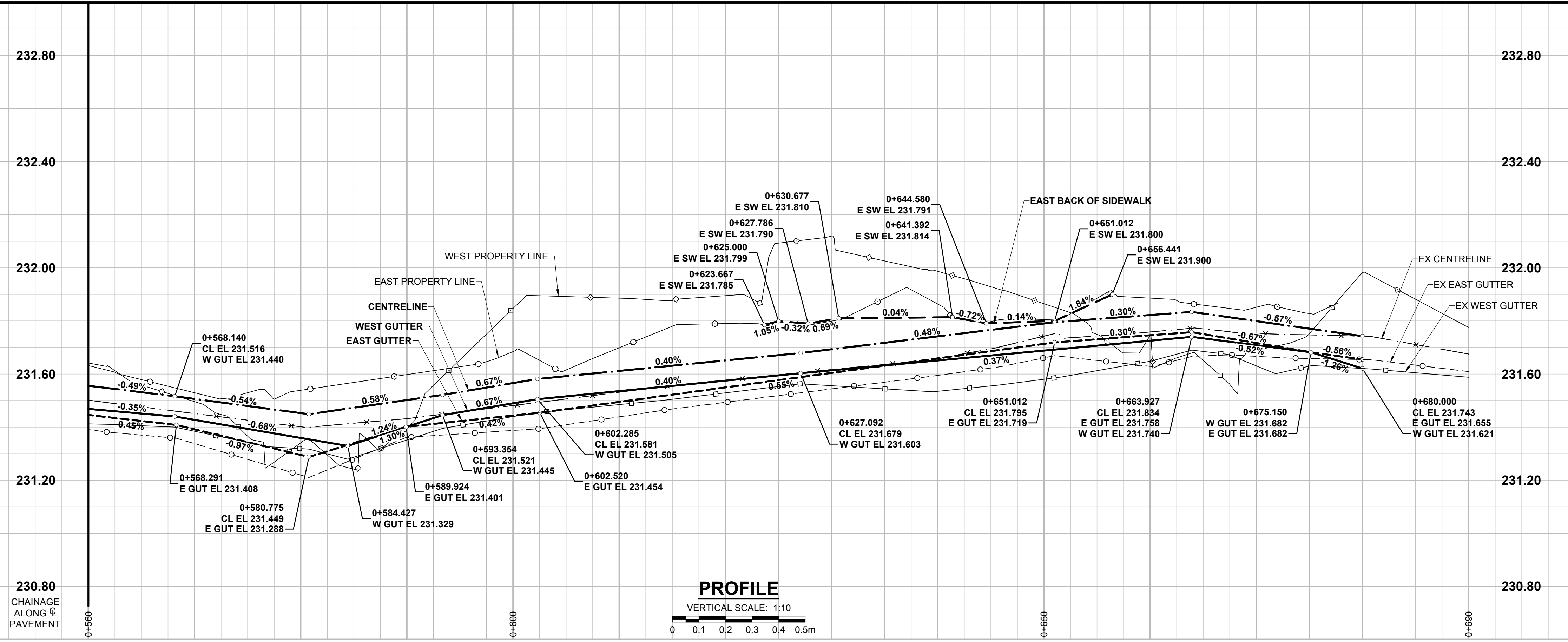
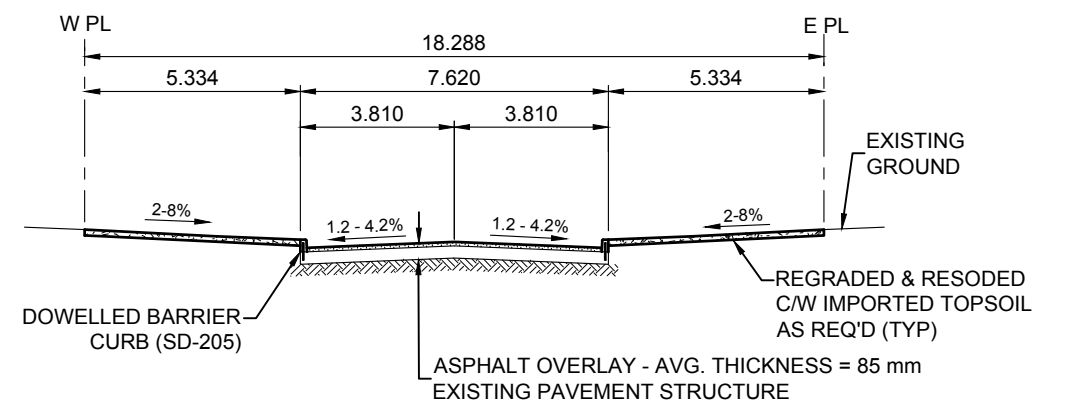
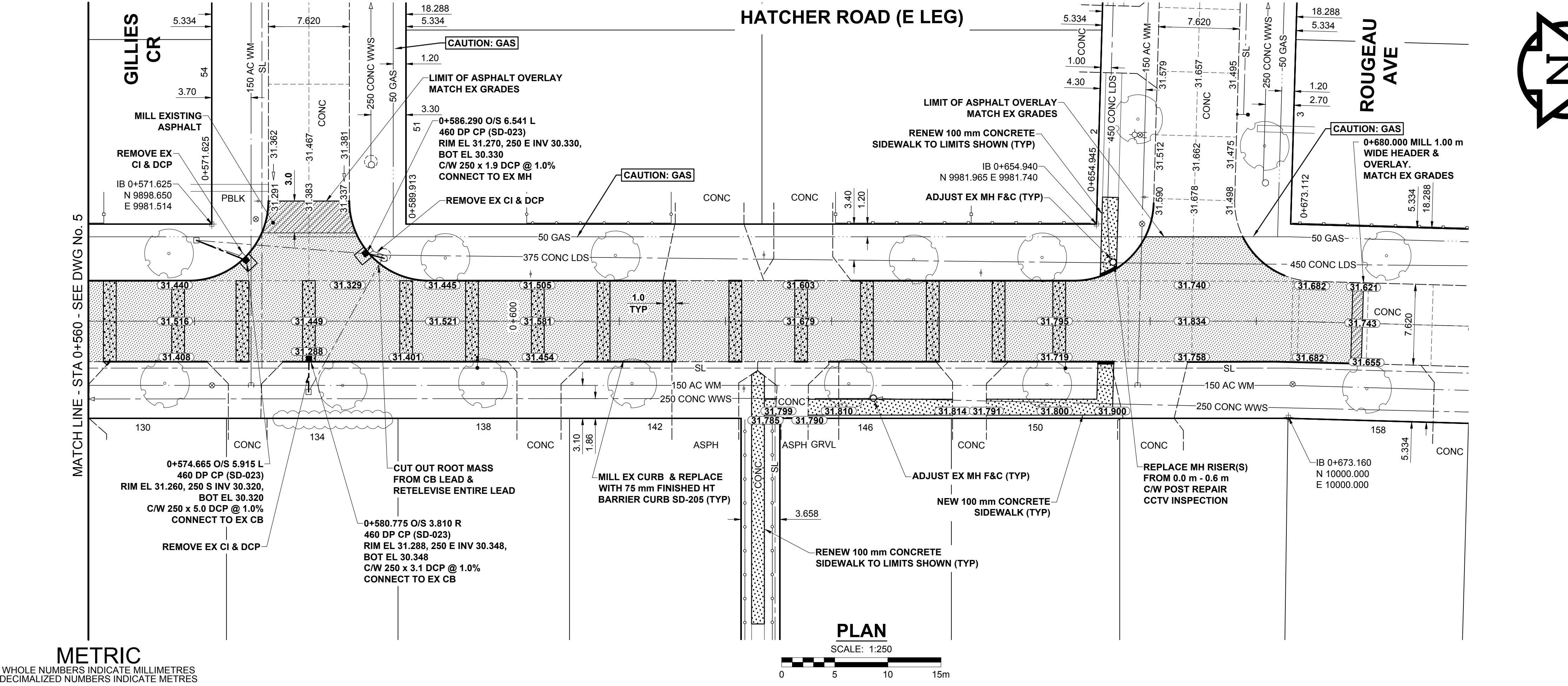


ISO A1 - 594mm x 841mm



- NOTES**
- ADJUST MH AND CB RIMS TO NEW GRADES.
  - LAMP STANDARDS, HYDRO POLES, AND ANCHORS THAT REQUIRE TEMPORARY SUPPORT, REMOVAL OR REPLACEMENT, TO BE DONE SO AT THE EXPENSE OF THE CONTRACTOR AS NECESSARY.
  - CONTRACTOR TO REGRADE/RENEW EXISTING PRIVATE SIDEWALKS TO LIMITS AS SHOWN. SIDEWALKS TO BE RENEWED WITH CONCRETE UNLESS NOTED OTHERWISE.
  - CONTRACTOR TO TAKE PRECAUTIONARY STEPS TO PROTECT EXISTING TREES WITHIN THE LIMITS OF CONSTRUCTION FROM DAMAGE FROM CONSTRUCTION ACTIVITIES AS OUTLINED IN THE SPECIFICATIONS.
  - CONTRACTOR TO CONFIRM THE LOCATION OF ALL UTILITIES/SERVICES IN THE FIELD PRIOR TO CONSTRUCTION.
  - MODIFIED BARRIER CURB TO BE USED AT ALL INTERSECTION RADII, BACK LANE RADII AND BULLNOSES.
  - CONTRACTOR TO OVERLAY DRIVEWAYS TO ENSURE POSITIVE DRAINAGE TO NEW STREET GRADES. FINAL LIMITS TO BE DETERMINED IN THE FIELD BY CONTRACT ADMINISTRATOR.
  - CB SD-023 & SD-024 OFFSETS ARE DIMENSIONED TO BOC. CB SD-025 OFFSETS ARE DIMENSIONED O/C.
  - REFER TO BID OPPORTUNITY FOR DETAILS REGARDING TRAFFIC MANAGEMENT.
  - ADD 200.000 m TO ABBREVIATED ELEVATIONS TO OBTAIN GEODETIC ELEVATIONS.



**TYPICAL PAVEMENT SECTION**  
ASPHALT REHABILITATION  
SCALE: NTS

**METRIC**  
WHOLE NUMBERS INDICATE MILLIMETRES  
DECIMALIZED NUMBERS INDICATE METRES

---	GAS	○	MANHOLE	●	CONCRETE PAVEMENT	---	LOCATION APPROVED UNDERGROUND STRUCTURES
---	MTS HANDWELL/PEDESTAL	□	CATCH BASIN/CATCH PIT	■	CONC SIDEWALK/MEDIAN	---	DATE
---	HYDRO HANDWELL/CABINET	△	CURB INLET WITH BOX	▲	ASPHALT PAVEMENT	---	COMMITTEE
---	CATV/FIBRE OPTIC	○	TREE	○	PAVING STONE	---	DATE
---	TRAFFIC SIGNALS/PIT	⊕	TEST HOLE	⊕	GRAVEL	---	NOTE:
---	LAND DRAINAGE SEWER	⊕	PROPERTY LINE	---	RAMP CURB	---	LOCATION OF UNDERGROUND STRUCTURES AS SHOWN ARE BASED ON THE BEST INFORMATION AVAILABLE BUT NO GUARANTEE IS GIVEN THAT ALL EXISTING UTILITIES ARE SHOWN OR THAT THE GIVEN LOCATIONS ARE EXACT. CONFIRMATION OF EXISTENCE AND EXACT LOCATION OF ALL SERVICES MUST BE OBTAINED FROM THE INDIVIDUAL UTILITIES BEFORE PROCEEDING WITH CONSTRUCTION.
---	SANITARY/COMBINED SEWER	⊕	SURVEY BAR	---	PLANING/REMOVAL	---	
---	CB LEAD/SSP/DCP	⊕	FENCE	---		---	
---	WATERMAIN	---	BOC/EDGE OF PAVEMENT	---		---	
---	SUBDRAIN	---	ELEVATION	---		---	
---	DITCH	---	TRAFFIC SIGN	---		---	
---	EXISTING	---	LEGEND - PLAN	---		---	
---	NEW	---	LEGEND - PLAN	---		---	

BM 30-003	Tot. in W. Conc. foundation of Transcona Public Safety Building, Plexis Rd. & Pandora Ave., 1.7 m S. of N.W. Cor. of Bldg.	ELEV 234.065 m
B	ISSUED FOR TENDER	18/03/27 GFC
A	ISSUED FOR CLIENT REVIEW	18/02/09 GFC
No.	REVISIONS	YY/MM/DD BY

DESIGNED BY	GFC	CHECKED BY	WRJ
DRAWN BY	DML	APPROVED BY	BWB
HOR SCALE		RELEASED FOR CONSTRUCTION	
VERT SCALE		DATE	
1:250		18/02/01	
1:10		DATE	

**MORRISON HERSHFIELD**

PROFESSIONAL'S SEAL

**PRELIMINARY DRAWING**

NOT TO BE USED FOR CONSTRUCTION

CONSULTANT FILE NAME  
1800598-Hatcher-PP-05.dwg

**THE CITY OF WINNIPEG**  
PUBLIC WORKS DEPARTMENT  
ENGINEERING DIVISION

**2018 LOCAL STREETS PACKAGE**  
**HATCHER ROAD**  
**BOURNAIS DR TO ROUGEAU AVE**  
REHABILITATION  
PAVING AND GRADING  
STA 0+560 TO ROUGEAU AVE

CITY DRAWING NUMBER  
N/A

SHEET 6 OF 18

DRAWING No. 6

BID OPPORTUNITY No. 123-2017