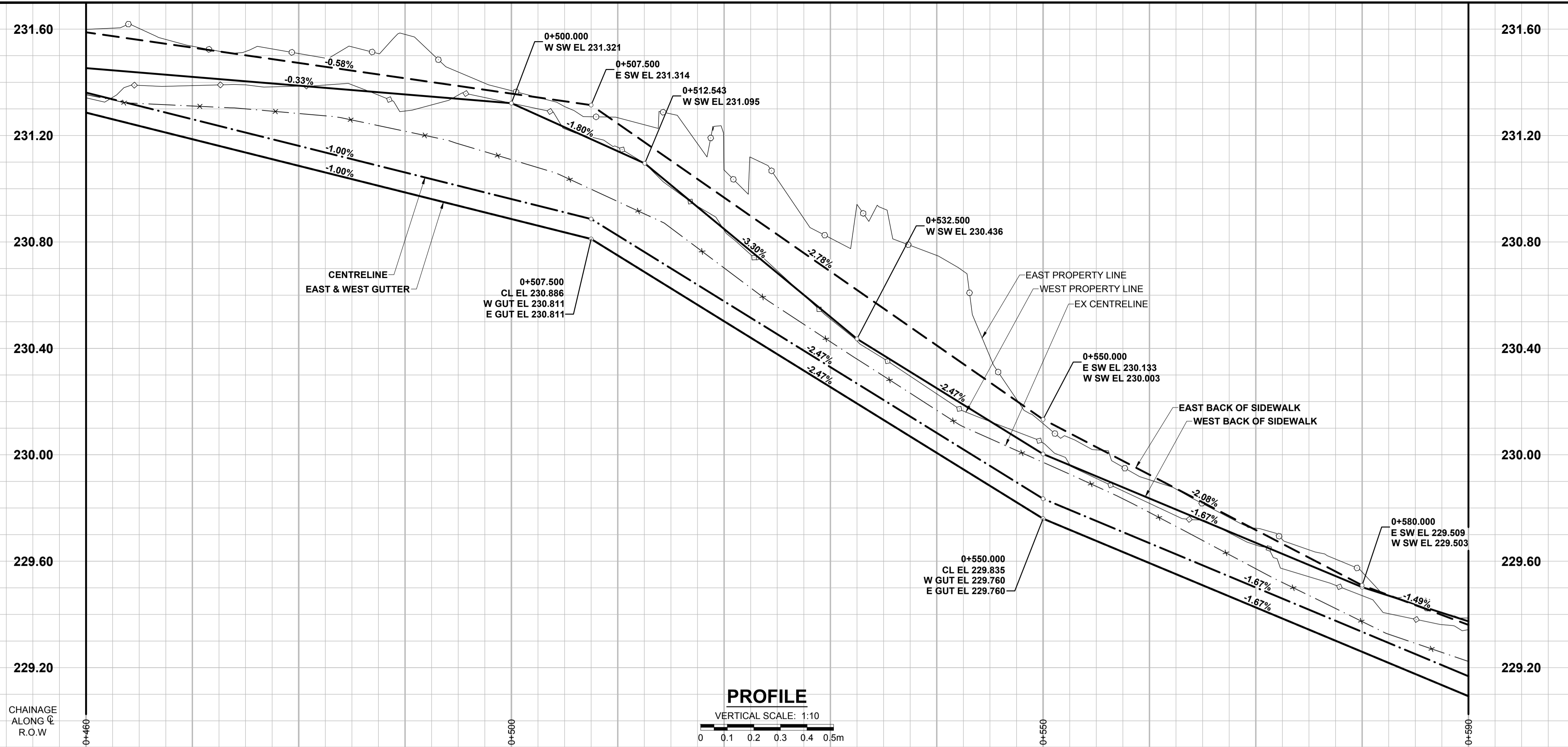
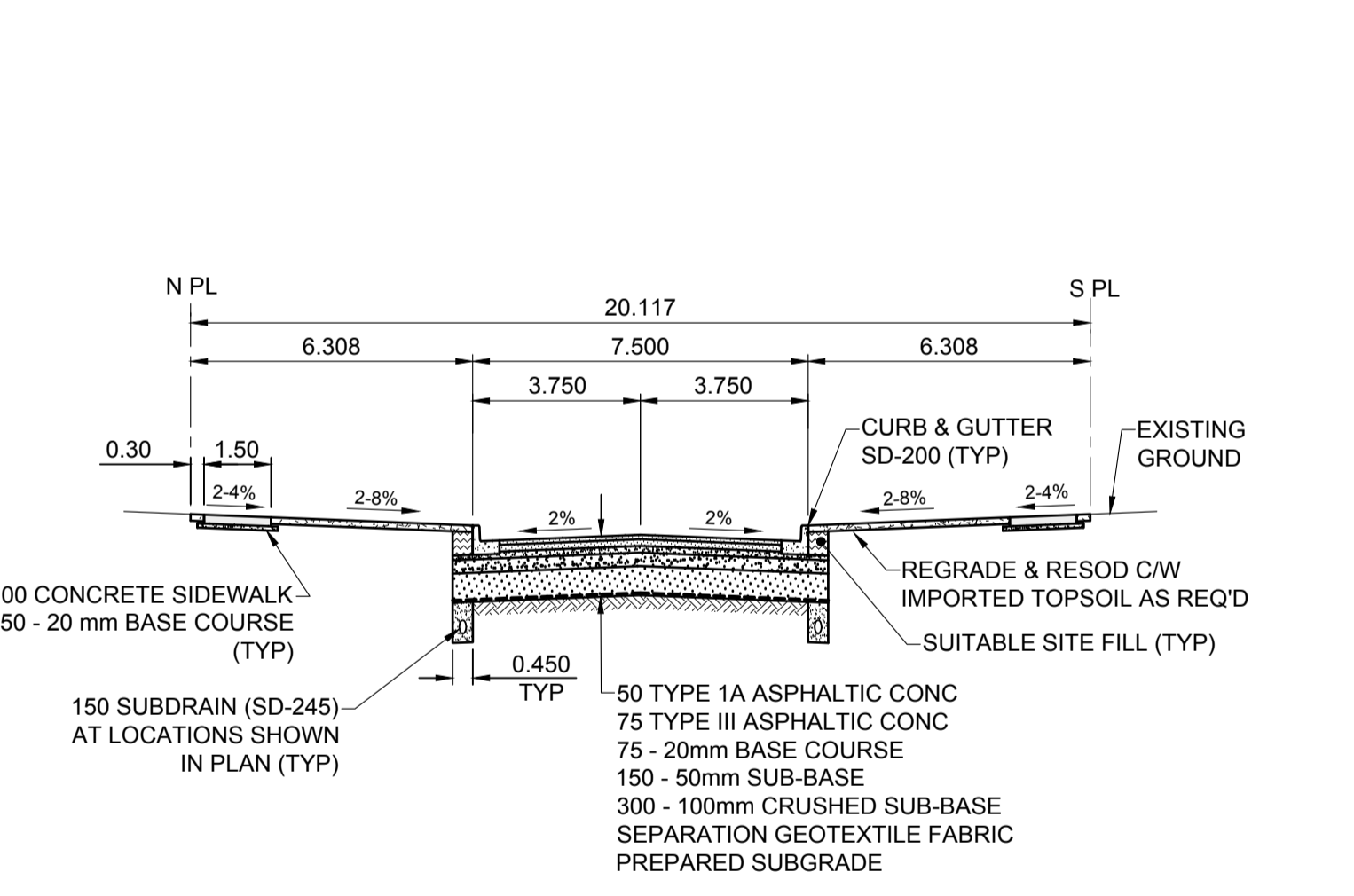
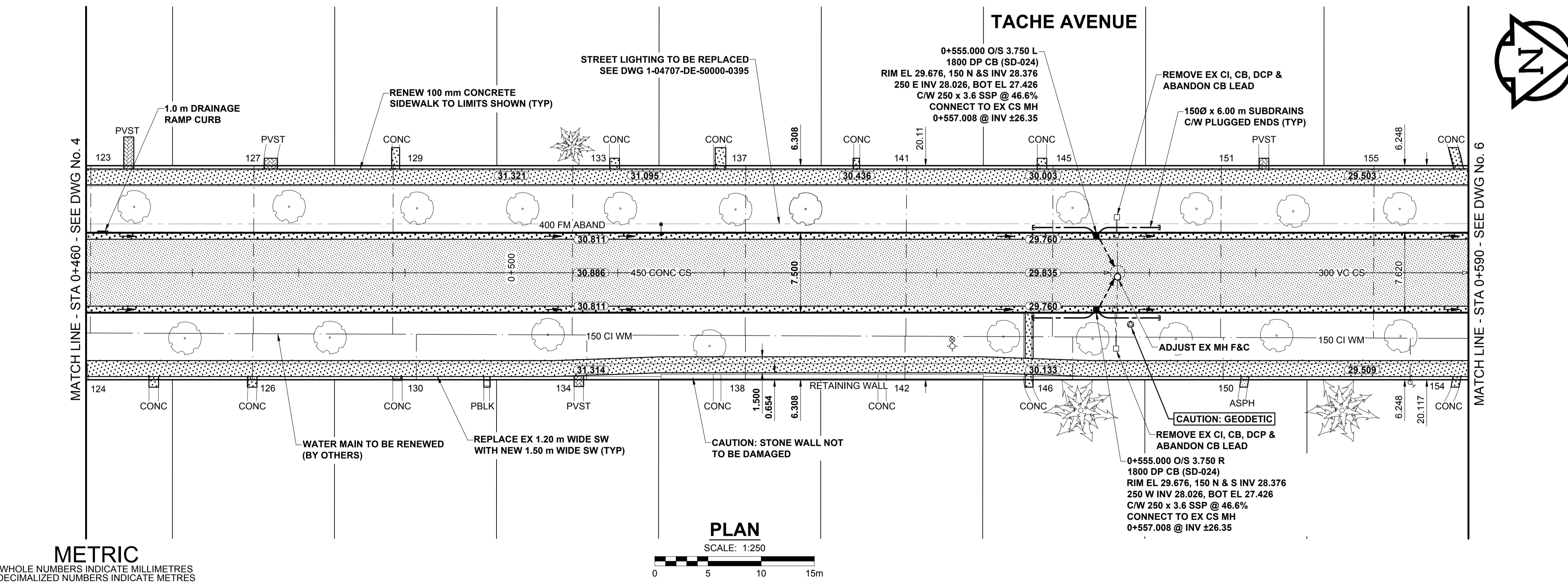


ISO A1 - 594mm x 841mm



- NOTES**
- ADJUST MH AND CB RIMS TO NEW GRADES.
 - LAMP STANDARDS, HYDRO POLES, AND ANCHORS THAT REQUIRE TEMPORARY SUPPORT, REMOVAL OR REPLACEMENT, TO BE DONE SO AT THE EXPENSE OF THE CONTRACTOR AS NECESSARY.
 - CONTRACTOR TO REGRADE/RENEW EXISTING PRIVATE SIDEWALKS TO LIMITS AS SHOWN. SIDEWALKS TO BE RENEWED WITH CONCRETE UNLESS NOTED OTHERWISE.
 - CONTRACTOR TO TAKE PRECAUTIONARY STEPS TO PROTECT EXISTING TREES WITHIN THE LIMITS OF CONSTRUCTION FROM DAMAGE FROM CONSTRUCTION ACTIVITIES AS OUTLINED IN THE SPECIFICATIONS.
 - CONTRACTOR TO CONFIRM THE LOCATION OF ALL UTILITIES/SERVICES IN THE FIELD PRIOR TO CONSTRUCTION.
 - CB SD-023 & SD-024 OFFSETS ARE DIMENSIONED TO BOC. CB SD-025 OFFSETS ARE DIMENSIONED O/C.
 - IN GENERAL, PAVEMENT AND SIDEWALK AREAS TO BE REMOVED. MATCH RECONSTRUCTION LIMITS.
 - REFER TO BID OPPORTUNITY FOR DETAILS REGARDING TRAFFIC MANAGEMENT.
 - EXISTING LONG WATER SERVICES TO BE INSULATED (SD-018). REFER TO BID OPPORTUNITY FOR FURTHER REQUIREMENTS AND AS NOTED IN PLAN.
 - ALL COSTS, MATERIALS AND LABOR ASSOCIATED WITH THE RESTORATION OF THE CATHODIC PROTECTED WATERMAIN WILL BE RESPONSIBILITY OF THE CONTRACTOR.
 - MODIFIED BARRIER CURB & GUTTER INLET FRAME & COVER TF-122.
 - ADD 200.000 m TO ABBREVIATED ELEVATIONS TO OBTAIN GEODETIC ELEVATIONS.



METRIC
WHOLE NUMBERS INDICATE MILLIMETRES
DECIMALIZED NUMBERS INDICATE METRES

| EXISTING | LEGEND - PLAN | NEW | EXISTING | LEGEND - PLAN | NEW | EXISTING | LEGEND - PLAN | NEW | |
|----------|-------------------------|-----|-----------------------|---------------|----------------------|----------|---|-----|---|
| | GAS | | MANHOLE | | CONCRETE PAVEMENT | | LOCATION APPROVED | | BM 34-004 ELEV 229.873 m |
| | MTS HANDWELL/PEDESTAL | | CATCH BASIN/CATCH PIT | | CONC SIDEWALK/MEDIAN | | SUPR. LIG. STRUCTURES | | Tbl. in 7.6 m Conc. pile, 2.1 m N. of line of N. wall of No. 146 Tache Ave. S. of St. |
| | HYDRO HANDWELL/CABINET | | CURB INLET WITH BOX | | ASPHALT PAVEMENT | | DATE | | MORRISON HERSHFIELD |
| | CATV/FIBRE OPTIC | | TREE | | PAVING STONE | | NOTE: | | PROFESSIONAL SEAL |
| | TRAFFIC SIGNALS/PIT | | TEST HOLE | | GRAVEL | | LOCATION OF UNDERGROUND STRUCTURES | | DESIGNED BY JGK |
| | LAND DRAINAGE SEWER | | PROPERTY LINE | | RAMP CURB | | INFORMATION AVAILABLE BUT NO GUARANTEE IS GIVEN THAT ALL EXISTING UTILITIES ARE SHOWN OR THAT THE GIVEN LOCATIONS ARE EXACT. CONFIRMATION OF EXISTENCE AND EXACT LOCATION OF ALL SERVICES MUST BE OBTAINED FROM THE INDIVIDUAL UTILITIES BEFORE PROCEEDING WITH CONSTRUCTION. | | DRAWN BY DML |
| | SANITARY/COMBINED SEWER | | SURVEY BAR | | PLANING/REMOVAL | | ISSUED FOR TENDER | | CHECKED BY RPB |
| | CB LEAD/SSP/DCP | | FENCE | | | | ISSUED FOR CLIENT REVIEW | | APPROVED BY BWB |
| | WATERMAIN | | BOC/EDGE OF PAVEMENT | | | | REVISIONS | | RELEASED FOR CONSTRUCTION |
| | SUBDRAIN | | ELEVATION (33.333) | | | | DATE | | CONSULTANT FILE NAME 1800598-Tache-PP-04.dwg |
| | DITCH | | TRAFFIC SIGN | | | | DATE | | |

LOCATION APPROVED
UNDERGROUND STRUCTURES

SUPR. LIG. STRUCTURES COMMITTEE DATE

NOTE:
LOCATION OF UNDERGROUND STRUCTURES AS SHOWN ARE BASED ON THE BEST INFORMATION AVAILABLE BUT NO GUARANTEE IS GIVEN THAT ALL EXISTING UTILITIES ARE SHOWN OR THAT THE GIVEN LOCATIONS ARE EXACT. CONFIRMATION OF EXISTENCE AND EXACT LOCATION OF ALL SERVICES MUST BE OBTAINED FROM THE INDIVIDUAL UTILITIES BEFORE PROCEEDING WITH CONSTRUCTION.

| No. | REVISIONS | DATE | BY |
|-----|--------------------------|----------|-----|
| B | ISSUED FOR TENDER | 18/04/03 | JGK |
| A | ISSUED FOR CLIENT REVIEW | 18/03/09 | JGK |
| | | YY/MM/DD | BY |

| DESIGNED BY | CHECKED BY |
|-------------|-------------|
| JGK | RPB |
| DRAWN BY | APPROVED BY |
| DML | BWB |
| DATE | DATE |
| 18/03/09 | 18/03/09 |

PRELIMINARY DRAWING

NOT TO BE USED FOR CONSTRUCTION

CONSULTANT FILE NAME
1800598-Tache-PP-04.dwg

THE CITY OF WINNIPEG
PUBLIC WORKS DEPARTMENT
ENGINEERING DIVISION

2018 LOCAL STREETS PACKAGE
TACHE AVENUE
LYNDALE DR TO ST MARY'S RD
ASPHALT RECONSTRUCTION
PAVING AND GRADING
STA 0+460 TO STA 0+590

CITY DRAWING NUMBER: N/A
SHEET 5 OF 19
DRAWING No. 5

BID OPPORTUNITY No. 124-2018

p:\2018\1800598-local streets program\18-03-09_cad\07_sheets\PART_B\1800598-Tache-PP-04.dwg
 Last Saved: 4/22/2018 12:53 PM by Diane Plattner: 4/5/2018 10:52 AM by Dave Lane