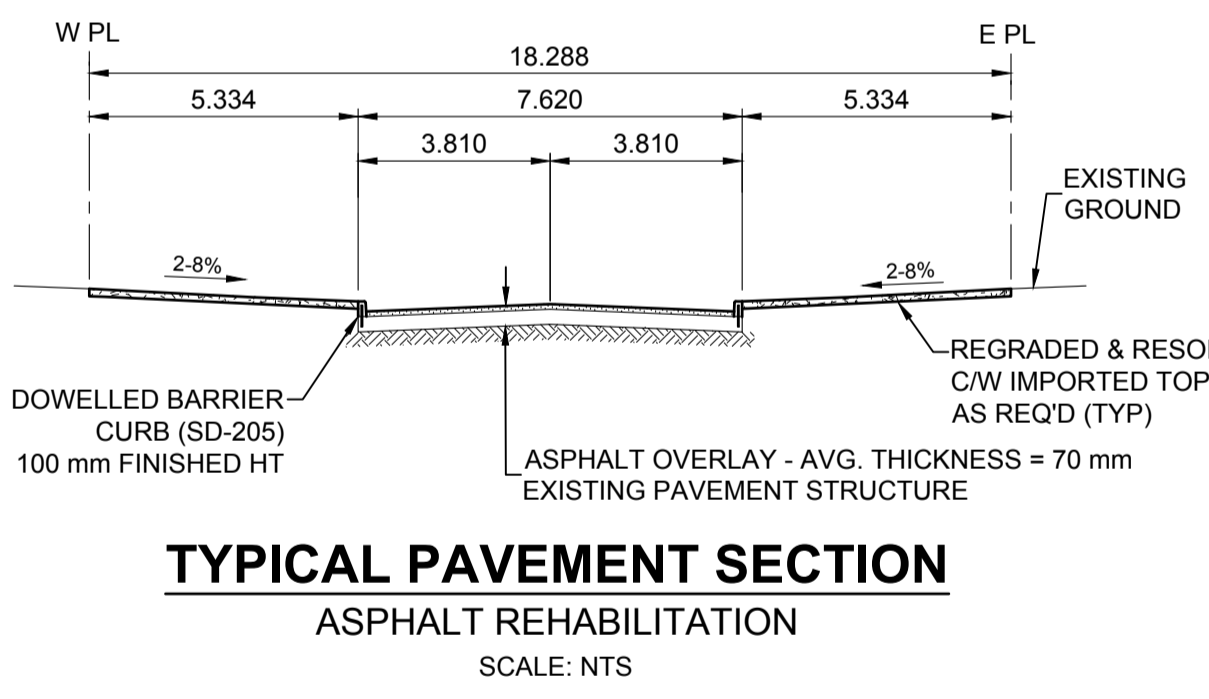
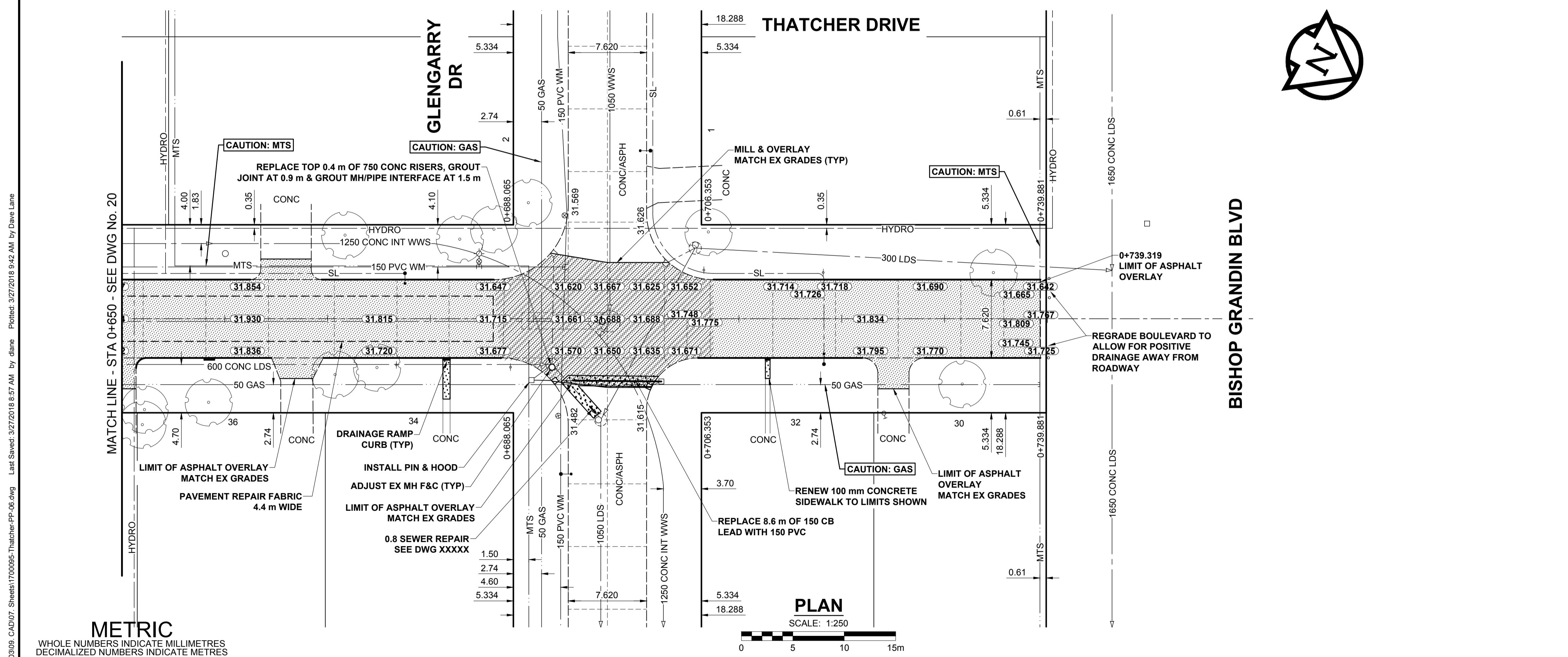


- NOTES
- ADJUST MH AND CB RIMS TO NEW GRADES.
  - LAMP STANDARDS, HYDRO POLES, AND ANCHORS THAT REQUIRE TEMPORARY SUPPORT, REMOVAL OR REPLACEMENT, TO BE DONE SO AT THE EXPENSE OF THE CONTRACTOR AS NECESSARY.
  - CONTRACTOR TO REGRADE/RENEW EXISTING PRIVATE SIDEWALKS TO LIMITS AS SHOWN. SIDEWALKS TO BE RENEWED WITH CONCRETE UNLESS NOTED OTHERWISE.
  - CONTRACTOR TO TAKE PRECAUTIONARY STEPS TO PROTECT EXISTING TREES WITHIN THE LIMITS OF CONSTRUCTION FROM DAMAGE FROM CONSTRUCTION ACTIVITIES AS OUTLINED IN THE SPECIFICATIONS.
  - CONTRACTOR TO CONFIRM THE LOCATION OF ALL UTILITIES/SERVICES IN THE FIELD PRIOR TO CONSTRUCTION.
  - MODIFIED BARRIER CURB TO BE USED AT ALL INTERSECTION RADII, BACK LANE RADII AND BULLNOSES.
  - CONTRACTOR TO OVERLAY DRIVEWAYS TO ENSURE POSITIVE DRAINAGE TO NEW STREET GRADES. FINAL LIMITS TO BE DETERMINED IN THE FIELD BY CONTRACT ADMINISTRATOR.
  - CB SD-023 & SD-024 OFFSETS ARE DIMENSIONED TO BOC. CB SD-025 OFFSETS ARE DIMENSIONED O/C.
  - REFER TO BID OPPORTUNITY FOR DETAILS REGARDING TRAFFIC MANAGEMENT.
  - ADD 200.000 m TO ABBREVIATED ELEVATIONS TO OBTAIN GEODETIC ELEVATIONS.



**METRIC**  
WHOLE NUMBERS INDICATE MILLIMETRES  
DECIMALIZED NUMBERS INDICATE METRES

GAS		MANHOLE	
MTS HANDWELL/PEDESTAL	○	CATCH BASIN/CATCH PIT	●
HYDRO HANDWELL/CABINET	◻	CURB INLET WITH BOX	◼
CATV/FIBRE OPTIC	△	TREE	▲
TRAFFIC SIGNALS/PIT	⊕	TEST HOLE	TH-12
LAND DRAINAGE SEWER	⊙	PROPERTY LINE	—
SANITARY/COMBINED SEWER	⊙	SURVEY BAR	—
CB LEAD/SPP/DCP	⊙	FENCE	—
WATERMAIN	—	BOC/EDGE OF PAVEMENT	—
SUBDRAIN	—	ELEVATION	(33.333)
DITCH	—	TRAFFIC SIGN	—
EXISTING	LEGEND - PLAN	NEW	EXISTING
NEW	LEGEND - PLAN	NEW	EXISTING

CONCRETE PAVEMENT	LOCATION APPROVED UNDERGROUND STRUCTURES
CONC SIDEWALK/MEDIAN	DATE
ASPHALT PAVEMENT	DATE
PAVING STONE	DATE
GRAVEL	DATE
RAMP CURB	DATE
PLANING/REMOVAL	DATE

**NOTE:**  
LOCATION OF UNDERGROUND STRUCTURES AS SHOWN ARE BASED ON THE BEST INFORMATION AVAILABLE BUT NO GUARANTEE IS GIVEN THAT ALL EXISTING UTILITIES ARE SHOWN OR THAT THE GIVEN LOCATIONS ARE EXACT. CONFIRMATION OF EXISTENCE AND EXACT LOCATION OF ALL SERVICES MUST BE OBTAINED FROM THE INDIVIDUAL UTILITIES BEFORE PROCEEDING WITH CONSTRUCTION.

BM 77-024	University Cr. & Chancellor Matheson, in valve box, 1.1m on top of 0.05 m dia. x 2.4 m iron pipe, 7.9 m S. of N.L. of Chancellor Matheson & 22.9 m W. of E.L. of University Cr.
ELEV 232.371 m	
No.	REVISIONS
18/03/28	ISSUED FOR TENDER
18/03/02	ISSUED FOR CLIENT REVIEW
18/03/02	DATE

DESIGNED BY	RPB	CHECKED BY	WRJ
DRAWN BY	DML	APPROVED BY	BWB
HOR SCALE		RELEASED FOR CONSTRUCTION	
VERT SCALE		DATE	
1:250		18/03/02	
1:10		DATE	

**MORRISON HERSHFIELD**

PROFESSIONAL'S SEAL

**PRELIMINARY DRAWING**

NOT TO BE USED FOR CONSTRUCTION

CONSULTANT FILE NAME  
1700095-Thatcher-PP-06.dwg

**THE CITY OF WINNIPEG**  
PUBLIC WORKS DEPARTMENT  
ENGINEERING DIVISION

**2018 LOCAL STREETS PACKAGE**  
**THATCHER DRIVE**  
UNIVERSITY CR TO NORTH END  
REHABILITATION  
PAVING AND GRADING  
STA 0+650 TO NORTH END

CITY DRAWING NUMBER  
N/A

SHEET 21 OF 25

DRAWING No. 21

BID OPPORTUNITY No. 127-2018