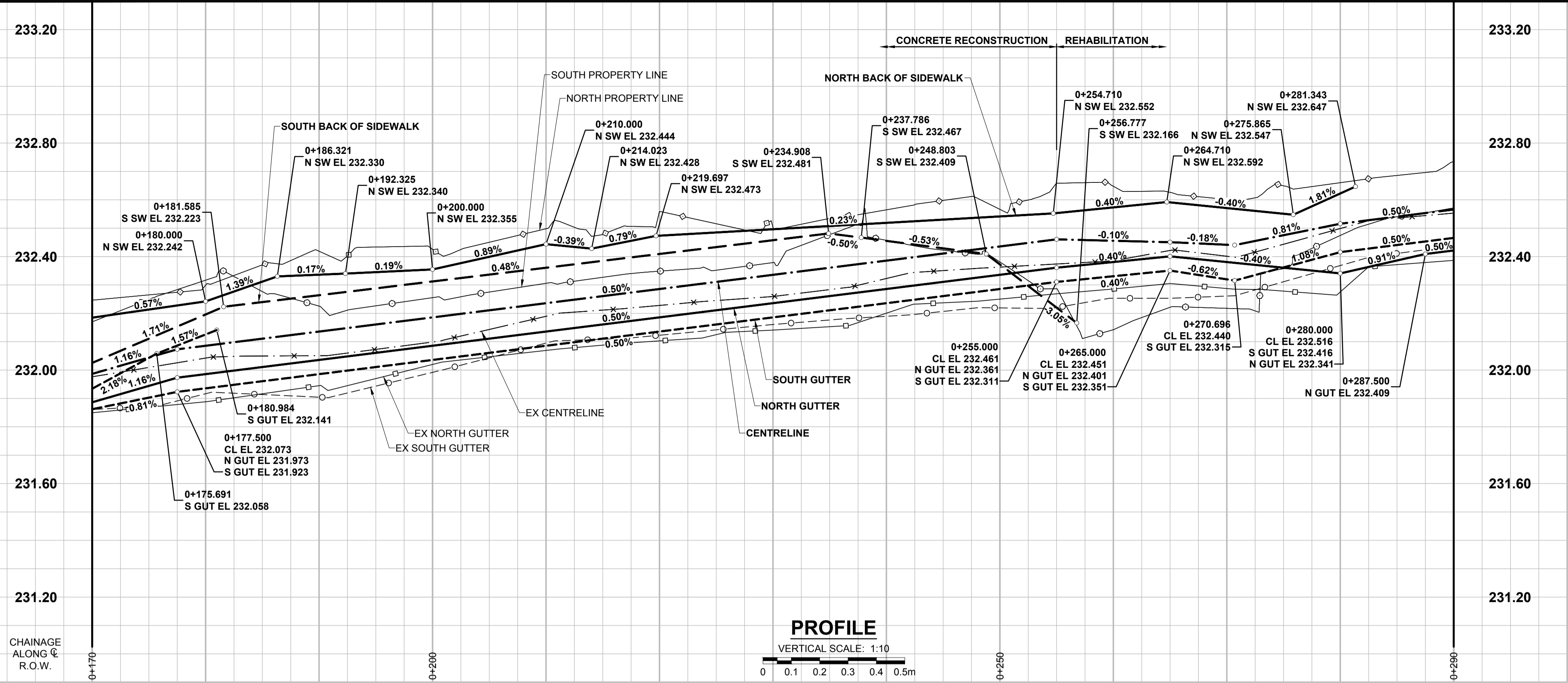
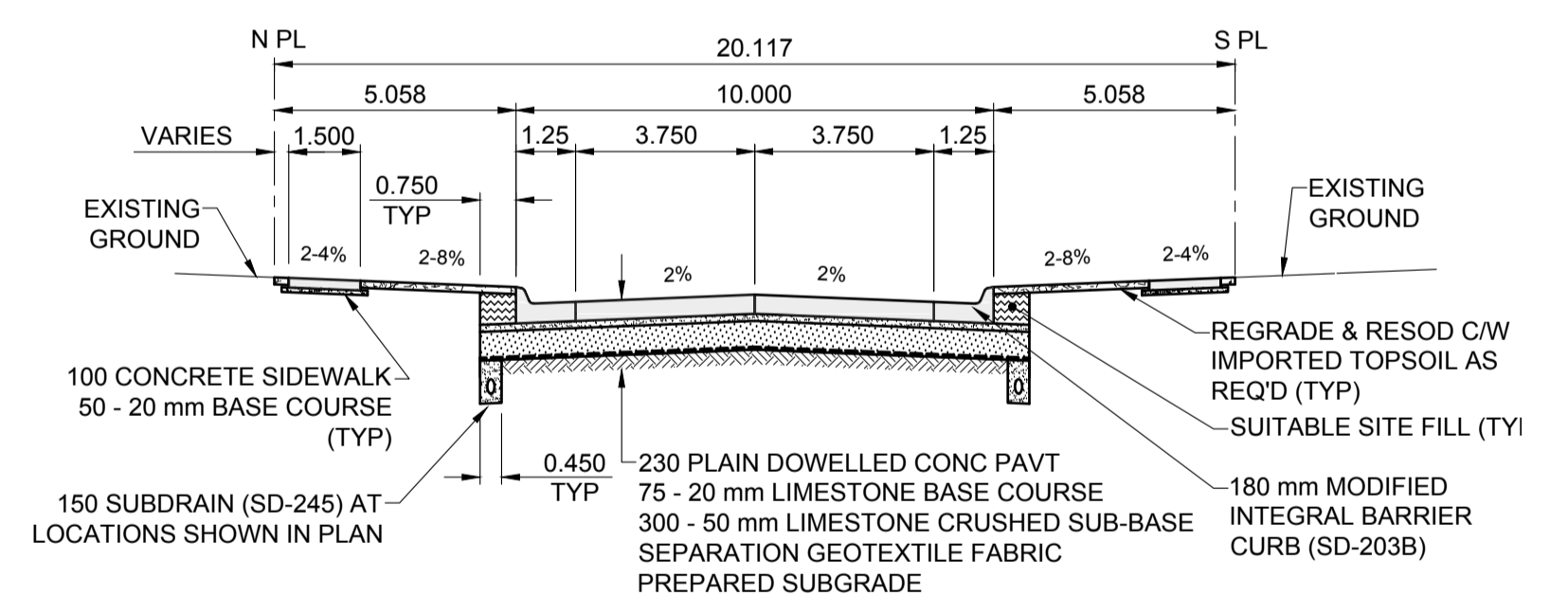
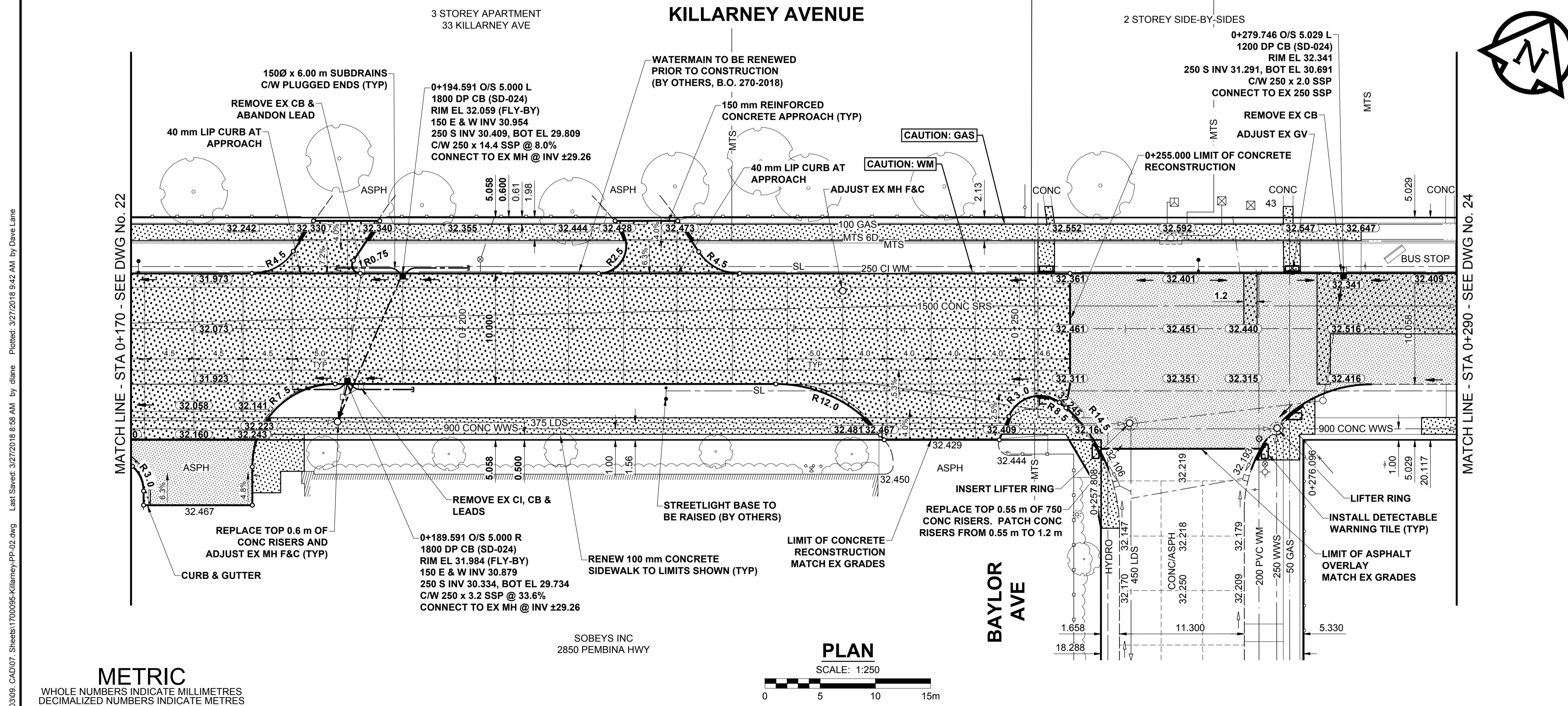


ISO A1 - 564mm x 841mm



- RECONSTRUCTION NOTES**
- ADJUST MH AND CB RIMS TO NEW GRADES.
 - LAMP STANDARDS, HYDRO POLES, AND ANCHORS THAT REQUIRE TEMPORARY SUPPORT, REMOVAL OR REPLACEMENT, TO BE DONE SO AT THE EXPENSE OF THE CONTRACTOR AS NECESSARY.
 - CONTRACTOR TO REGRADE/RENEW EXISTING PRIVATE SIDEWALKS TO LIMITS AS SHOWN. SIDEWALKS TO BE RENEWED WITH CONCRETE UNLESS NOTED OTHERWISE.
 - CONTRACTOR TO TAKE PRECAUTIONARY STEPS TO PROTECT EXISTING TREES WITHIN THE LIMITS OF CONSTRUCTION FROM DAMAGE FROM CONSTRUCTION ACTIVITIES AS OUTLINED IN THE SPECIFICATIONS.
 - CONTRACTOR TO CONFIRM THE LOCATION OF ALL UTILITIES/SERVICES IN THE FIELD PRIOR TO CONSTRUCTION.
 - CB SD-023 & SD-024 OFFSETS ARE DIMENSIONED TO BOC. CB SD-025 OFFSETS ARE DIMENSIONED O/C.
 - IN GENERAL, PAVEMENT AND SIDEWALK AREAS TO BE REMOVED. MATCH RECONSTRUCTION LIMITS.
 - REFER TO BID OPPORTUNITY FOR DETAILS REGARDING TRAFFIC MANAGEMENT.
 - EXISTING LONG WATER SERVICES TO BE INSULATED (SD-018). REFER TO BID OPPORTUNITY FOR FURTHER REQUIREMENTS AND AS NOTED IN PLAN.
 - ALL COSTS, MATERIALS AND LABOR ASSOCIATED WITH THE RESTORATION OF THE CATHODIC PROTECTED WATERMAIN WILL BE RESPONSIBILITY OF THE CONTRACTOR.
 - MODIFIED BARRIER CURB & GUTTER INLET FRAME & COVER TF-122.
 - ADD 200.000 m TO ABBREVIATED ELEVATIONS TO OBTAIN GEODETIC ELEVATIONS.
- REHABILITATION NOTES**
- MODIFIED BARRIER CURB TO BE USED AT ALL INTERSECTION RADII, BACK LANE RADII AND BULLNOSES.
 - CONTRACTOR TO OVERLAY DRIVEWAYS TO ENSURE POSITIVE DRAINAGE TO NEW STREET GRADES. FINAL LIMITS TO BE DETERMINED IN THE FIELD BY CONTRACT ADMINISTRATOR.

PROFILE
VERTICAL SCALE: 1:10



TYPICAL PAVEMENT SECTION
CONCRETE PAVEMENT STRUCTURE
SCALE: NTS

METRIC
WHOLE NUMBERS INDICATE MILLIMETRES
DECIMALIZED NUMBERS INDICATE METRES

PLAN
SCALE: 1:250

---	GAS	○	MANHOLE	●	CONCRETE PAVEMENT	□	LOCATION APPROVED UNDERGROUND STRUCTURES
---	MTS HANDWELL/PEDESTAL	□	CATCH BASIN/CATCH PIT	■	CONC SIDEWALK/MEDIAN	□	SUPR. U/G STRUCTURES COMMITTEE
---	HYDRO HANDWELL/CABINET	△	CURB INLET WITH BOX	▲	ASPHALT PAVEMENT	□	DATE
---	CATV/FIBRE OPTIC	○	TREE	■	PAVING STONE	□	NOTE:
---	TRAFFIC SIGNALS/PIT	⊕	TEST HOLE	■	GRAVEL	□	LOCATION OF UNDERGROUND STRUCTURES AS SHOWN ARE BASED ON THE BEST INFORMATION AVAILABLE BUT NO GUARANTEE IS GIVEN THAT ALL EXISTING UTILITIES ARE SHOWN OR THAT THE GIVEN LOCATIONS ARE EXACT. CONFIRMATION OF EXISTENCE AND EXACT LOCATION OF ALL SERVICES MUST BE OBTAINED FROM THE INDIVIDUAL UTILITIES BEFORE PROCEEDING WITH CONSTRUCTION.
---	LAND DRAINAGE SEWER	⊕	PROPERTY LINE	■	RAMP CURB	□	
---	SANITARY/COMBINED SEWER	⊕	SURVEY BAR	■	PLANING/REMOVAL	□	
---	CB LEAD/SSP/DCP	⊕	FENCE	■		□	
---	WATERMAIN	⊕	BOC/EDGE OF PAVEMENT	■		□	
---	SUBDRAIN	⊕	ELEVATION	■		□	
---	DITCH	⊕	TRAFFIC SIGN	■		□	
---	EXISTING	---	LEGEND - PLAN	---	LEGEND - PLAN	---	LEGEND - PLAN

BM 82-016 ELEV 234.106 m	N. side Killarney Ave. E. of Greyfriars Rd., Tbt. in S. Conc. foundation of Acadia Junior High School, 0.5 m E. & 0.1 m below (total) stone of S.W. Cor. of school.	MORRISON HERSHFIELD	DESIGNED BY: JGK	CHECKED BY: RPB
			DRAWN BY: DML	APPROVED BY: BWB
			RELEASED FOR CONSTRUCTION	
			HOR SCALE: 1:250	
			VERT SCALE: 1:10	
			DATE: 18/03/02	
			BY: JGK	
			DATE: 18/03/02	

PROFESSIONAL'S SEAL

PRELIMINARY DRAWING

NOT TO BE USED FOR CONSTRUCTION

CONSULTANT FILE NAME: 1700095-Killarney-PP-02.dwg

THE CITY OF WINNIPEG
PUBLIC WORKS DEPARTMENT
ENGINEERING DIVISION

2018 LOCAL STREETS PACKAGE
KILLARNEY AVENUE
PEMBINA HWY TO CALEDON RD
CONCRETE RECONSTRUCTION & REHABILITATION
PAVING AND GRADING
STA 0+170 TO STA 0+290

CITY DRAWING NUMBER: N/A
SHEET 23 OF 25
DRAWING NO. 23

BID OPPORTUNITY No. 127-2018

P:\2017\1700095\2018 Local Streets Package\18-R-0309_CAD\07_Sheets\1700095-Killarney-PP-02.dwg
Last Saved: 3/27/2018 8:58 AM by diane
Plotted: 3/27/2018 9:42 AM by Dave Lane