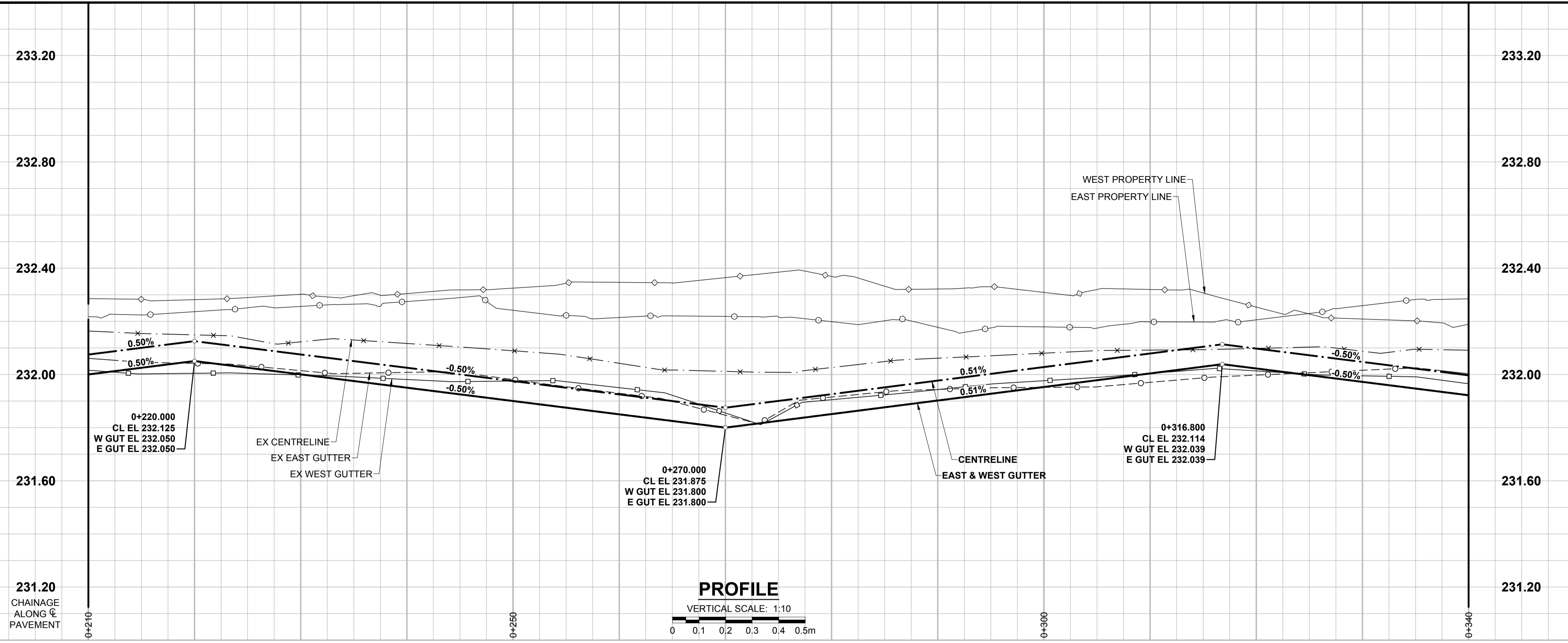


ISO A1 - 594mm x 841mm

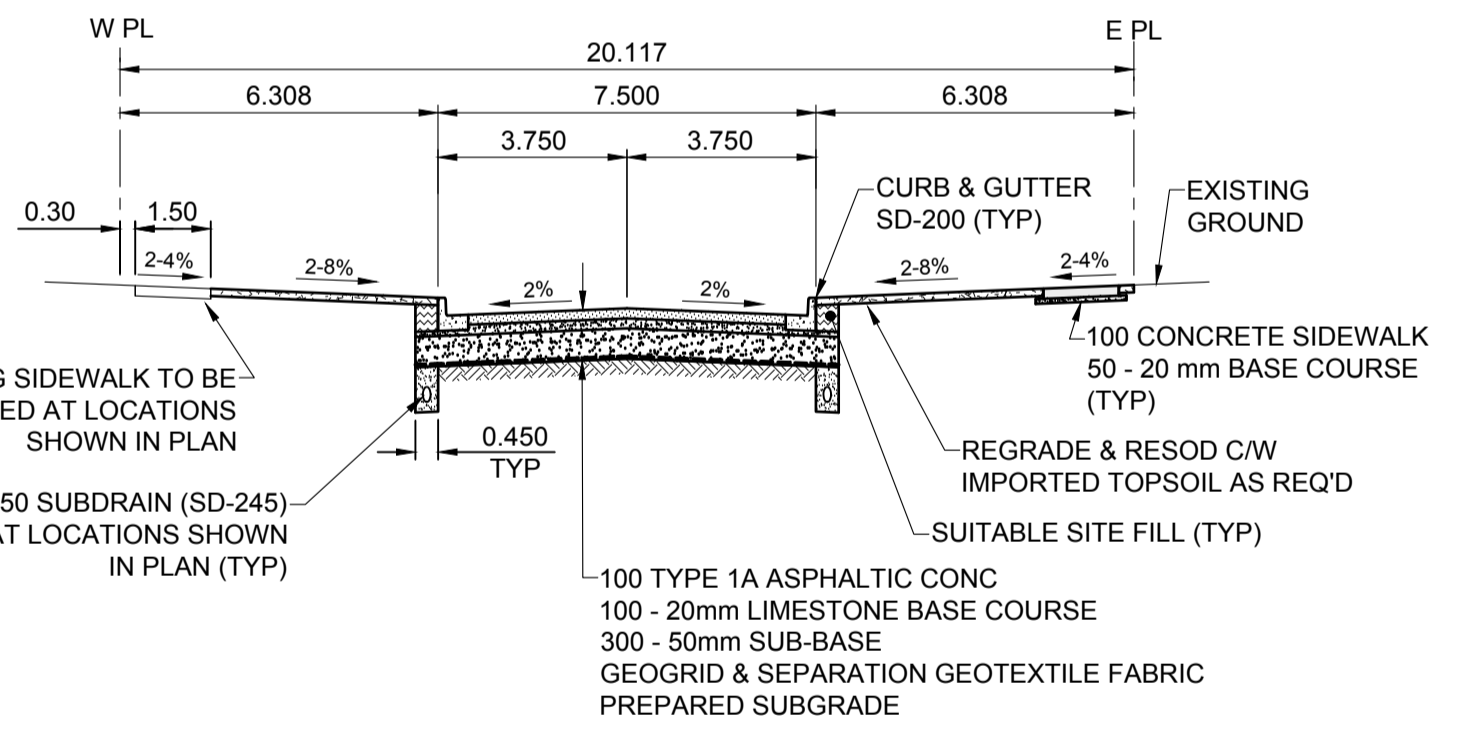
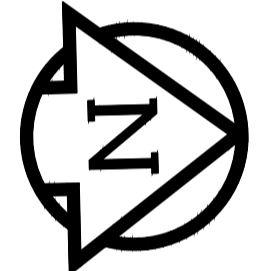
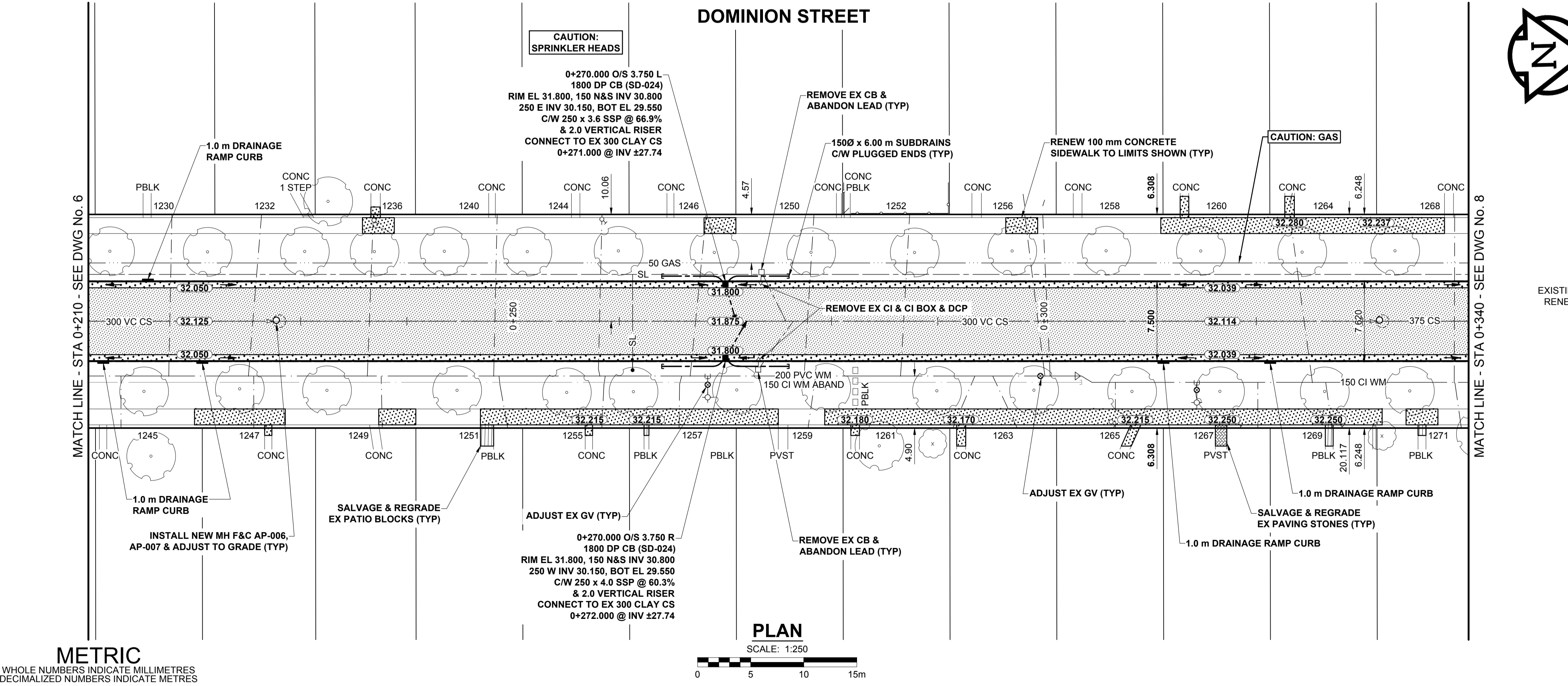
P:\2018\1800599\2018 Local Streets Program\18-R-0709 CAD\07\_Sheets\1800599-Dominion-PP-02.dwg, Last Saved: 4/11/2018 10:24 AM, by: Diane, Pldt: 4/17/2018 2:45 PM, by: Dave Lane



- NOTES**
- ADJUST MH AND CB RIMS TO NEW GRADES.
  - LAMP STANDARDS, HYDRO POLES, AND ANCHORS THAT REQUIRE TEMPORARY SUPPORT, REMOVAL OR REPLACEMENT, TO BE DONE SO AT THE EXPENSE OF THE CONTRACTOR AS NECESSARY.
  - CONTRACTOR TO REGRADE/RENEW EXISTING PRIVATE SIDEWALKS TO LIMITS AS SHOWN. SIDEWALKS TO BE RENEWED WITH CONCRETE UNLESS NOTED OTHERWISE.
  - CONTRACTOR TO TAKE PRECAUTIONARY STEPS TO PROTECT EXISTING TREES WITHIN THE LIMITS OF CONSTRUCTION FROM DAMAGE FROM CONSTRUCTION ACTIVITIES AS OUTLINED IN THE SPECIFICATIONS.
  - CONTRACTOR TO CONFIRM THE LOCATION OF ALL UTILITIES/SERVICES IN THE FIELD PRIOR TO CONSTRUCTION.
  - CB SD-023 & SD-024 OFFSETS ARE DIMENSIONED TO BOC. CB SD-025 OFFSETS ARE DIMENSIONED O/C.
  - IN GENERAL, PAVEMENT AND SIDEWALK AREAS TO BE REMOVED. MATCH RECONSTRUCTION LIMITS.
  - REFER TO BID OPPORTUNITY FOR DETAILS REGARDING TRAFFIC MANAGEMENT.
  - EXISTING LONG WATER SERVICES TO BE INSULATED (SD-018). REFER TO BID OPPORTUNITY FOR FURTHER REQUIREMENTS AND AS NOTED IN PLAN.
  - ALL COSTS, MATERIALS AND LABOR ASSOCIATED WITH THE RESTORATION OF THE CATHODIC PROTECTED WATERMAIN WILL BE RESPONSIBILITY OF THE CONTRACTOR.
  - MODIFIED BARRIER CURB & GUTTER INLET FRAME & COVER TF-122.
  - ADD 200.000 m TO ABBREVIATED ELEVATIONS TO OBTAIN GEODETIC ELEVATIONS.

**PROFILE**  
VERTICAL SCALE: 1:10

**PLAN**  
SCALE: 1:250



**TYPICAL PAVEMENT SECTION**  
ASPHALT PAVEMENT STRUCTURE  
SCALE: NTS

**METRIC**  
WHOLE NUMBERS INDICATE MILLIMETRES  
DECIMALIZED NUMBERS INDICATE METRES

EXISTING	LEGEND - PLAN	NEW	EXISTING	LEGEND - PLAN	NEW	EXISTING	LEGEND - PLAN	NEW	EXISTING	LEGEND - PLAN	NEW
---	GAS	---	○	MANHOLE	●	---	CONCRETE PAVEMENT	---	---	LOCATION APPROVED UNDERGROUND STRUCTURES	---
---	MTS HANDWELL/PEDESTAL	---	□	CATCH BASIN/CATCH PIT	■	---	CONC SIDEWALK/MEDIAN	---	---	DATE	---
---	HYDRO HANDWELL/CABINET	---	△	CURB INLET WITH BOX	▲	---	ASPHALT PAVEMENT	---	---	COMMITTEE	---
---	CATV/FIBRE OPTIC	---	○	TREE	○	---	PAVING STONE	---	---	NOTE:	---
---	TRAFFIC SIGNALS/PIT	---	⊕	TEST HOLE	⊕	---	GRAVEL	---	---	LOCATION OF UNDERGROUND STRUCTURES AS SHOWN ARE BASED ON THE BEST INFORMATION AVAILABLE BUT NO GUARANTEE IS GIVEN THAT ALL EXISTING UTILITIES ARE SHOWN OR THAT THE GIVEN LOCATIONS ARE EXACT. CONFIRMATION OF EXISTENCE AND EXACT LOCATION OF ALL SERVICES MUST BE OBTAINED FROM THE INDIVIDUAL UTILITIES BEFORE PROCEEDING WITH CONSTRUCTION.	---
---	LAND DRAINAGE SEWER	---	TH-12	PROPERTY LINE	---	---	RAMP CURB	---	---	BM 36-048 S. side Notre Dame Ave. Bldg. N. & Dominion St. ELEV 232.513 m	---
---	SANITARY/COMBINED SEWER	---	+	SURVEY BAR	---	---	PLANING/REMOVAL	---	---	Tab. in N. Conc. Foundation No. 1134 Notre Dame Ave. (Clifton Apts.), 1 m W. & 0.7 m below stucco of N.E. Cor. of Bldg.	---
---	CB LEAD/SSP/DCP	---	+	FENCE	---	---		---	---	DESIGNED BY RPB	---
---	WATERMAIN	---	---	BOC/EDGE OF PAVEMENT	---	---		---	---	CHECKED BY WRJ	---
---	SUBDRAIN	---	33.000	ELEVATION	---	---		---	---	DRAWN BY DML	---
---	DITCH	---	---	TRAFFIC SIGN	---	---		---	---	APPROVED BY BWB	---
---		---	---		---	---		---	---	RELEASED FOR CONSTRUCTION	---
---		---	---		---	---		---	---	CONSULTANT FILE NAME	---
---		---	---		---	---		---	---	1800599-Dominion-PP-02.dwg	---

**LOCATION APPROVED UNDERGROUND STRUCTURES**

SUPR. U/G STRUCTURES COMMITTEE DATE

**NOTE:**  
LOCATION OF UNDERGROUND STRUCTURES AS SHOWN ARE BASED ON THE BEST INFORMATION AVAILABLE BUT NO GUARANTEE IS GIVEN THAT ALL EXISTING UTILITIES ARE SHOWN OR THAT THE GIVEN LOCATIONS ARE EXACT. CONFIRMATION OF EXISTENCE AND EXACT LOCATION OF ALL SERVICES MUST BE OBTAINED FROM THE INDIVIDUAL UTILITIES BEFORE PROCEEDING WITH CONSTRUCTION.

No.	REVISIONS	DATE	BY
B	ISSUED FOR TENDER	18/04/12	RPB
A	ISSUED FOR CLIENT REVIEW	18/03/23	RPB
		YY/MM/DD	BY

DESIGNED BY	CHECKED BY	DRAWN BY	APPROVED BY	RELEASED FOR CONSTRUCTION
RPB	WRJ	DML	BWB	
				DATE

PROFESSIONAL'S SEAL

**PRELIMINARY DRAWING**

NOT TO BE USED FOR CONSTRUCTION

CONSULTANT FILE NAME  
1800599-Dominion-PP-02.dwg

**THE CITY OF WINNIPEG**  
PUBLIC WORKS DEPARTMENT  
ENGINEERING DIVISION

**2018 LOCAL STREETS PACKAGE**  
**DOMINION STREET**  
**YARWOOD AVE TO NOTRE DAME AVE**  
ASPHALT RECONSTRUCTION  
PAVING AND GRADING  
STA 0+210 TO STA 0+340

CITY DRAWING NUMBER: N/A  
SHEET 7 OF 32  
DRAWING No. 7

BID OPPORTUNITY No. 128-2018