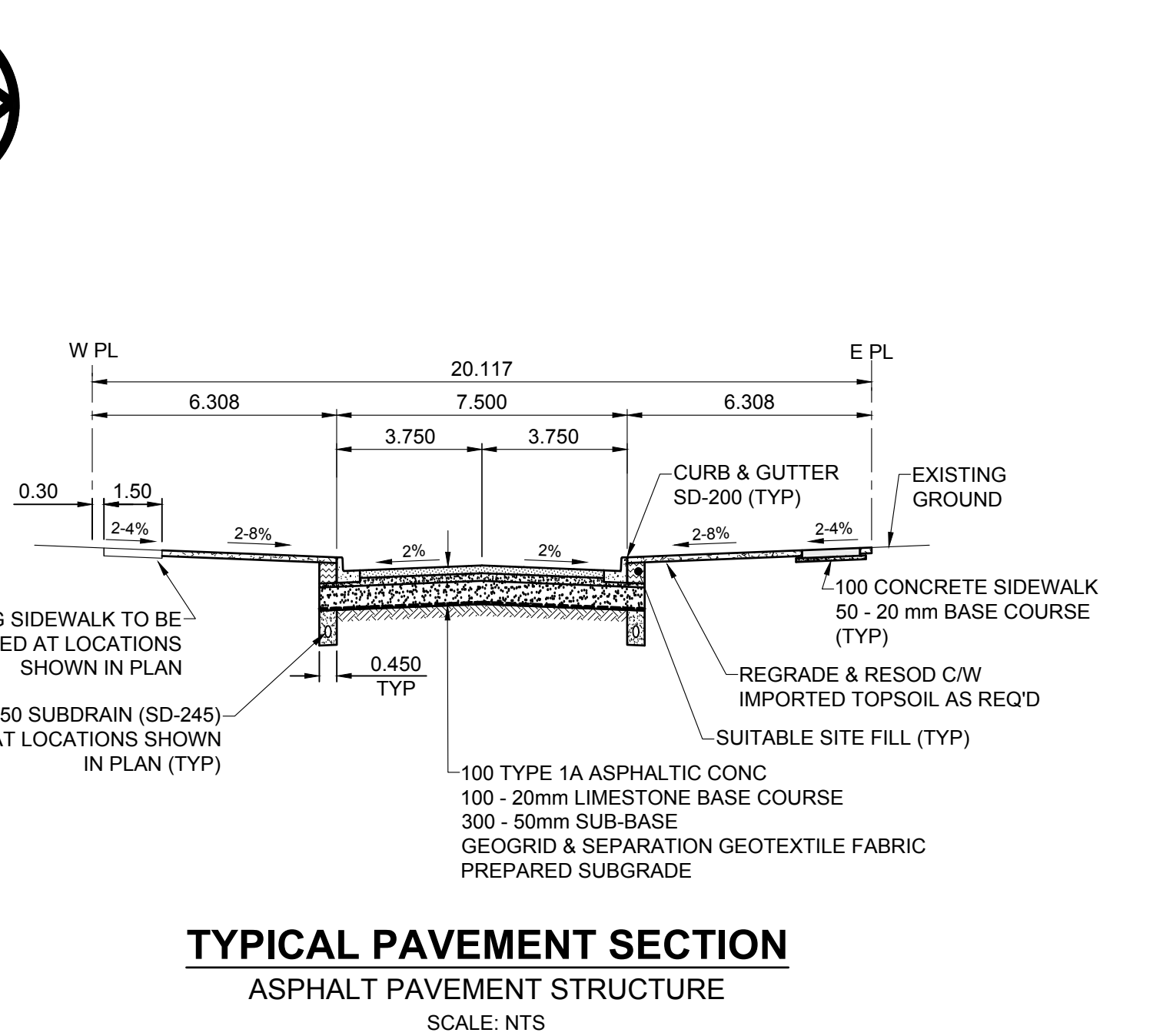
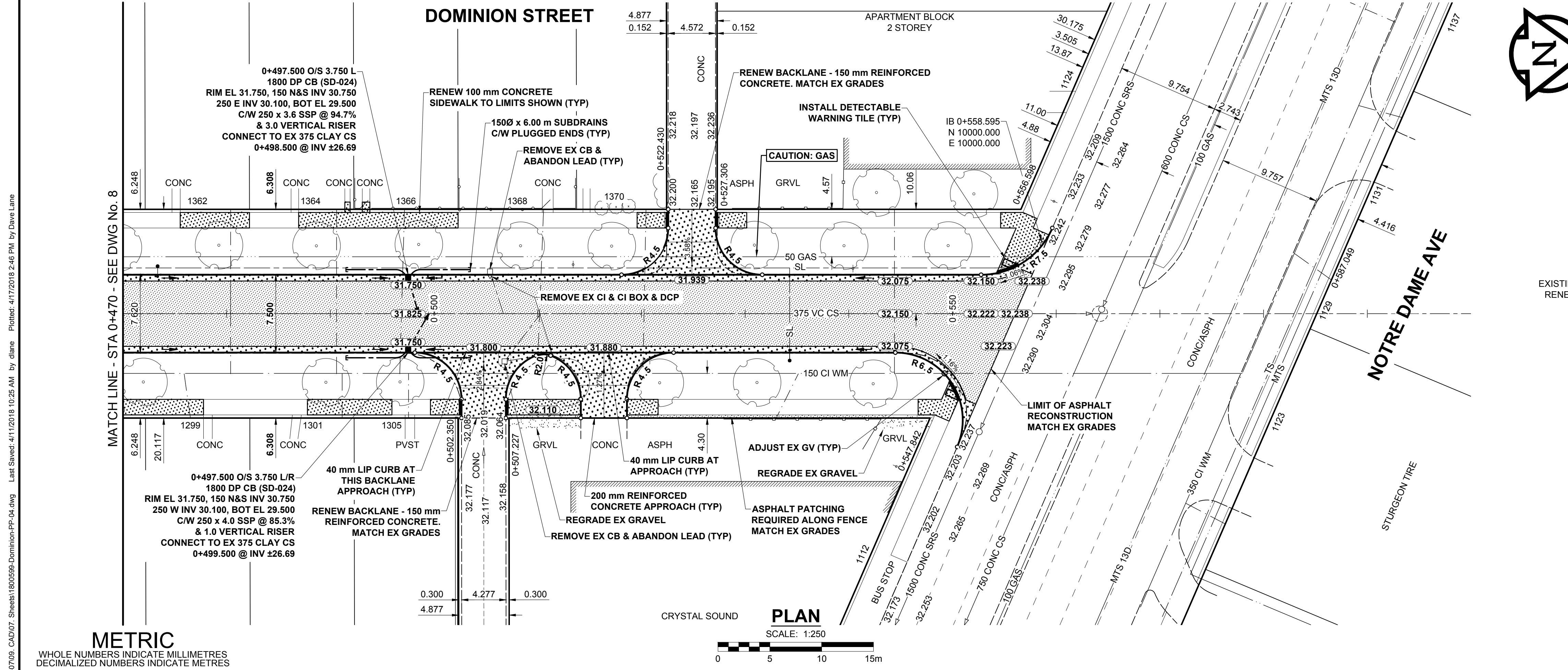


- NOTES**
- ADJUST MH AND CB RIMS TO NEW GRADES.
 - LAMP STANDARDS, HYDRO POLES, AND ANCHORS THAT REQUIRE TEMPORARY SUPPORT, REMOVAL OR REPLACEMENT, TO BE DONE SO AT THE EXPENSE OF THE CONTRACTOR AS NECESSARY.
 - CONTRACTOR TO REGRADE/RENEW EXISTING PRIVATE SIDEWALKS TO LIMITS AS SHOWN. SIDEWALKS TO BE RENEWED WITH CONCRETE UNLESS NOTED OTHERWISE.
 - CONTRACTOR TO TAKE PRECAUTIONARY STEPS TO PROTECT EXISTING TREES WITHIN THE LIMITS OF CONSTRUCTION FROM DAMAGE FROM CONSTRUCTION ACTIVITIES AS OUTLINED IN THE SPECIFICATIONS.
 - CONTRACTOR TO CONFIRM THE LOCATION OF ALL UTILITIES/SERVICES IN THE FIELD PRIOR TO CONSTRUCTION.
 - CB SD-023 & SD-024 OFFSETS ARE DIMENSIONED TO BOC. CB SD-025 OFFSETS ARE DIMENSIONED O/C.
 - IN GENERAL, PAVEMENT AND SIDEWALK AREAS TO BE REMOVED. MATCH RECONSTRUCTION LIMITS.
 - REFER TO BID OPPORTUNITY FOR DETAILS REGARDING TRAFFIC MANAGEMENT.
 - EXISTING LONG WATER SERVICES TO BE INSULATED (SD-018). REFER TO BID OPPORTUNITY FOR FURTHER REQUIREMENTS AND AS NOTED IN PLAN.
 - ALL COSTS, MATERIALS AND LABOR ASSOCIATED WITH THE RESTORATION OF THE CATHODIC PROTECTED WATERMAIN WILL BE RESPONSIBILITY OF THE CONTRACTOR.
 - MODIFIED BARRIER CURB & GUTTER INLET FRAME & COVER TF-122.
 - ADD 200.000 m TO ABBREVIATED ELEVATIONS TO OBTAIN GEODETIC ELEVATIONS.



METRIC
WHOLE NUMBERS INDICATE MILLIMETRES
DECIMALIZED NUMBERS INDICATE METRES

---	GAS	○	MANHOLE
---	MTS HANDWELL/PEDESTAL	□	CATCH BASIN/CATCH PIT
---	HYDRO HANDWELL/CABINET	△	CURB INLET WITH BOX
---	CATV/FIBRE OPTIC	○	TREE
---	TRAFFIC SIGNALS/PIT	⊕	TEST HOLE
---	LAND DRAINAGE SEWER	⊕ TH-12	PROPERTY LINE
---	SANITARY/COMBINED SEWER	⊕	SURVEY BAR
---	CB LEAD/SSP/DCP	⊕	FENCE
---	WATERMAIN	---	BOC/EDGE OF PAVEMENT
---	SUBDRAIN	33.000	ELEVATION (33.333)
---	DITCH	---	TRAFFIC SIGN
---	EXISTING	---	LEGEND - PLAN
---	NEW	---	NEW

---	CONCRETE PAVEMENT	---	LOCATION APPROVED
---	CONC SIDEWALK/MEDIAN	---	UNDERGROUND STRUCTURES
---	ASPHALT PAVEMENT	---	DATE
---	PAVING STONE	---	DATE
---	GRAVEL	---	DATE
---	RAMP CURB	---	DATE
---	PLANING/REMOVAL	---	DATE
---	EXISTING	---	DATE
---	NEW	---	DATE

LOCATION APPROVED UNDERGROUND STRUCTURES

SUPR. U/G STRUCTURES COMMITTEE DATE

NOTE: LOCATION OF UNDERGROUND STRUCTURES AS SHOWN ARE BASED ON THE BEST INFORMATION AVAILABLE BUT NO GUARANTEE IS GIVEN THAT ALL EXISTING UTILITIES ARE SHOWN OR THAT THE GIVEN LOCATIONS ARE EXACT. CONFIRMATION OF EXISTENCE AND EXACT LOCATION OF ALL SERVICES MUST BE OBTAINED FROM THE INDIVIDUAL UTILITIES BEFORE PROCEEDING WITH CONSTRUCTION.

BIM	36-048	S. side Notre Dame Ave. Bldg. N. of Dominion St.
ELEV	232.513 m	Tie in N. Conc. Foundation No. 1134 Notre Dame Ave. (Clifton Apts.), 1 m W. & 0.7 m below stucco of N.E. Cor. of Bldg.
ISSUED FOR TENDER	18/04/12	RPB
ISSUED FOR CLIENT REVIEW	18/03/23	RPB
REVISIONS	YY/MM/DD	BY

DESIGNED BY	RPB	CHECKED BY	WRJ
DRAWN BY	DML	APPROVED BY	BWB
HOR SCALE	1:250	RELEASED FOR CONSTRUCTION	
VERT SCALE	1:10	DATE	18/01/26

PROFESSIONAL'S SEAL

PRELIMINARY DRAWING

NOT TO BE USED FOR CONSTRUCTION

CONSULTANT FILE NAME
1800599-Dominion-PP-04.dwg

THE CITY OF WINNIPEG
PUBLIC WORKS DEPARTMENT
ENGINEERING DIVISION

2018 LOCAL STREETS PACKAGE
DOMINION STREET
YARWOOD AVE TO NOTRE DAME AVE
ASPHALT RECONSTRUCTION
PAVING AND GRADING
STA 0+470 TO NOTRE DAME AVE

CITY DRAWING NUMBER: N/A
SHEET 9 OF 32
DRAWING No. 9

BID OPPORTUNITY No. 128-2018