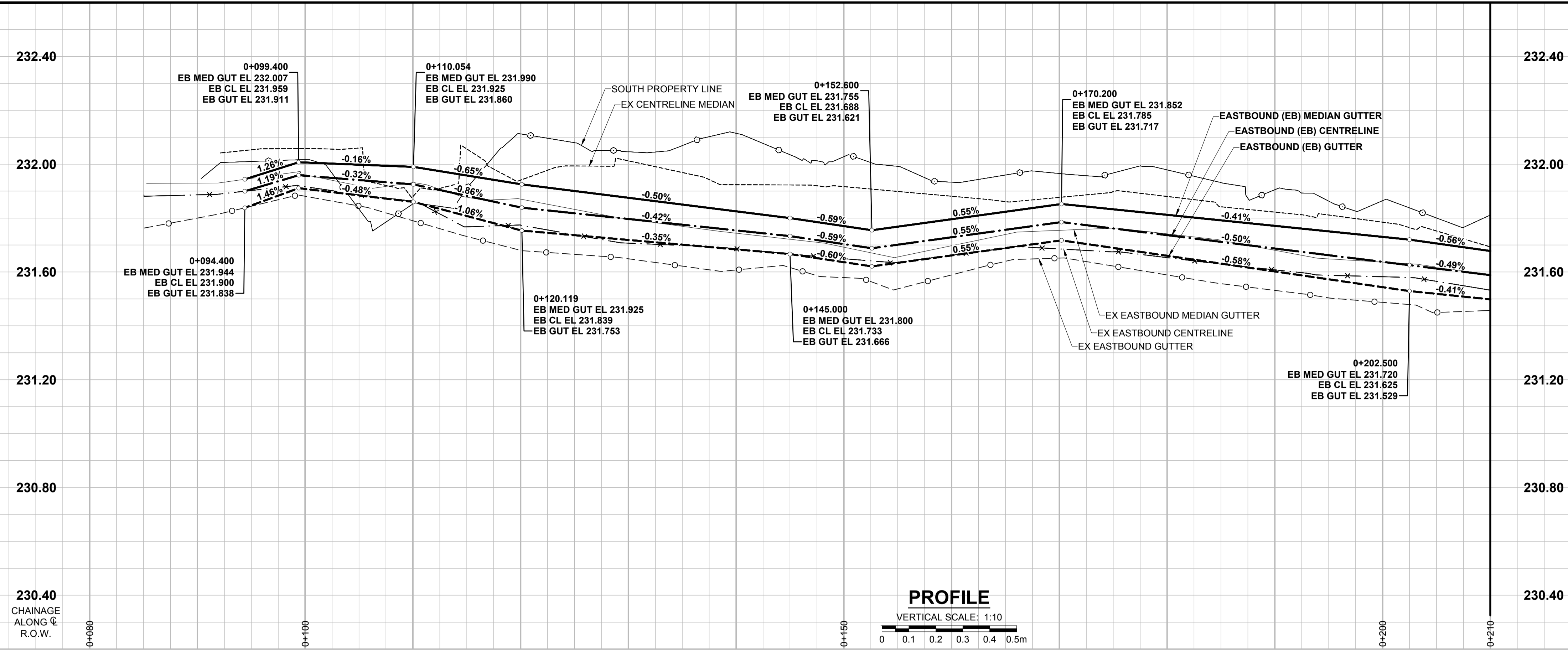
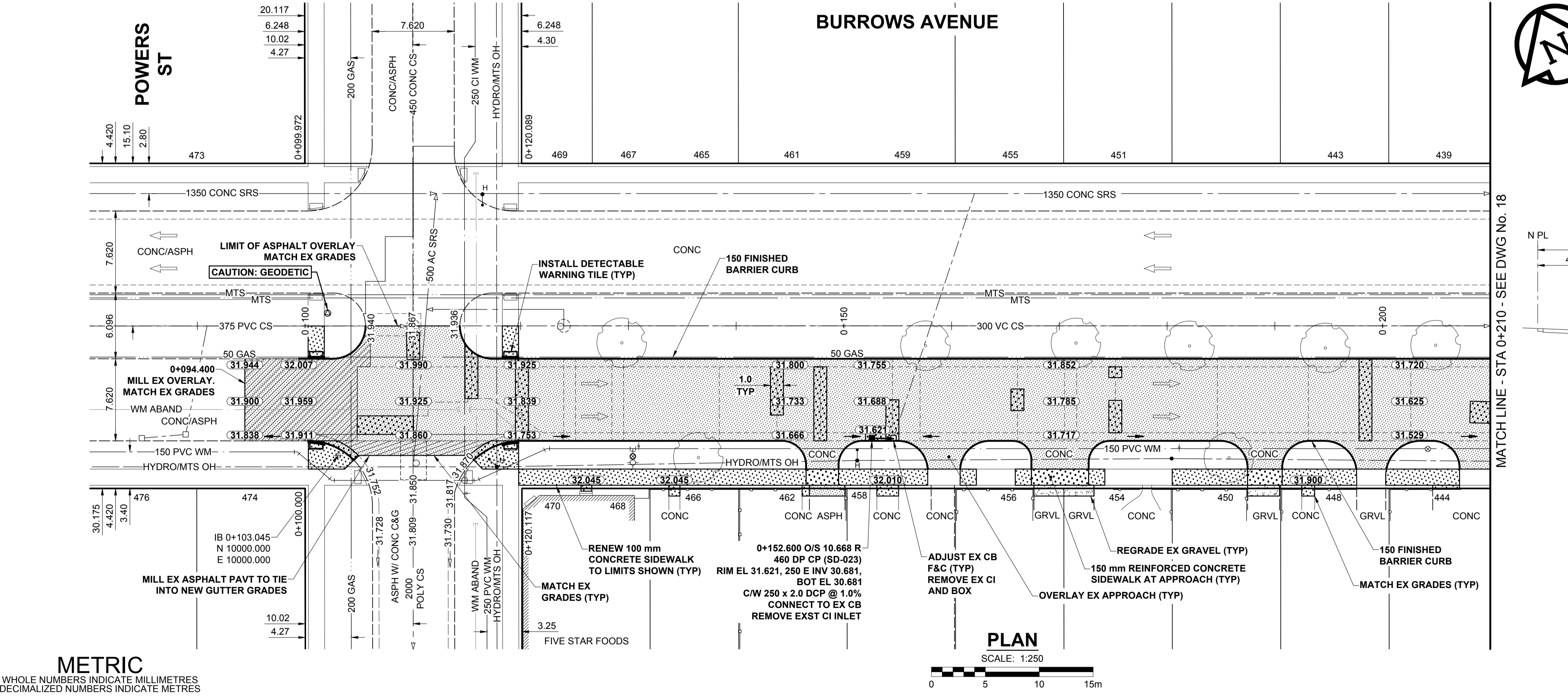


P:\2018\1800599\2018_Locals Streets Package\18-R-07\09_CAD\07_Sheets\1800599-Burrows-PP-01.dwg
 Last Saved: 4/11/2018 10:21 AM by diane
 Plotted: 4/17/2018 2:49 PM by Dave Lane
 ISO A1 - 594mm x 841mm



- NOTES**
- ADJUST MH AND CB RIMS TO NEW GRADES.
 - LAMP STANDARDS, HYDRO POLES, AND ANCHORS THAT REQUIRE TEMPORARY SUPPORT, REMOVAL OR REPLACEMENT, TO BE DONE SO AT THE EXPENSE OF THE CONTRACTOR AS NECESSARY.
 - CONTRACTOR TO REGRADE/RENEW EXISTING PRIVATE SIDEWALKS TO LIMITS AS SHOWN. SIDEWALKS TO BE RENEWED WITH CONCRETE UNLESS NOTED OTHERWISE.
 - CONTRACTOR TO TAKE PRECAUTIONARY STEPS TO PROTECT EXISTING TREES WITHIN THE LIMITS OF CONSTRUCTION FROM DAMAGE FROM CONSTRUCTION ACTIVITIES AS OUTLINED IN THE SPECIFICATIONS.
 - CONTRACTOR TO CONFIRM THE LOCATION OF ALL UTILITIES/SERVICES IN THE FIELD PRIOR TO CONSTRUCTION.
 - MODIFIED BARRIER CURB TO BE USED AT ALL INTERSECTION RADII, BACK LANE RADII AND BULLNOSES.
 - CONTRACTOR TO OVERLAY DRIVEWAYS TO ENSURE POSITIVE DRAINAGE TO NEW STREET GRADES. FINAL LIMITS TO BE DETERMINED IN THE FIELD BY CONTRACT ADMINISTRATOR.
 - CB SD-023 & SD-024 OFFSETS ARE DIMENSIONED TO BOC. CB SD-025 OFFSETS ARE DIMENSIONED O/C.
 - REFER TO BID OPPORTUNITY FOR DETAILS REGARDING TRAFFIC MANAGEMENT.
 - ADD 200.000 m TO ABBREVIATED ELEVATIONS TO OBTAIN GEODETIC ELEVATIONS.



MATCH LINE - STA 0+210 - SEE DWG No. 18



METRIC
WHOLE NUMBERS INDICATE MILLIMETRES
DECIMALIZED NUMBERS INDICATE METRES

EXISTING	LEGEND - PLAN	NEW	EXISTING	LEGEND - PLAN	NEW	EXISTING	LEGEND - PLAN	NEW	
	GAS		MANHOLE		CONCRETE PAVEMENT		LOCATION APPROVED		BM 26-026 ELEV 232.298 m
	MTS HANDWELL/PEDESTAL		CATCH BASIN/CATCH PIT		CONC SIDEWALK/MEDIAN		SUPR. U/G STRUCTURES		S.W. Cor. Magnus Ave. & Powers St. 1st in E. Conc. foundation of William White Community School No. 200 Powers St., 1 m.S. & 0.1 m below Tyndal Stone wall of the most N.W. E. Cor. of School.
	HYDRO HANDWELL/CABINET		CURB INLET WITH BOX		ASPHALT PAVEMENT		DATE		MORRISON HERSHFIELD
	CATV/FIBRE OPTIC		TREE		PAVING STONE		COMMITTEE		PROFESSIONAL'S SEAL
	TRAFFIC SIGNALS/PIT		TEST HOLE		GRAVEL		NOTE:		PRELIMINARY DRAWING
	LAND DRAINAGE SEWER		PROPERTY LINE		RAMP CURB		LOCATION OF UNDERGROUND STRUCTURES AS SHOWN ARE BASED ON THE BEST INFORMATION AVAILABLE BUT NO GUARANTEE IS GIVEN THAT ALL EXISTING UTILITIES ARE SHOWN OR THAT THE GIVEN LOCATIONS ARE EXACT. CONFIRMATION OF EXISTENCE AND EXACT LOCATION OF ALL SERVICES MUST BE OBTAINED FROM THE INDIVIDUAL UTILITIES BEFORE PROCEEDING WITH CONSTRUCTION.		NOT TO BE USED FOR CONSTRUCTION
	SANITARY/COMBINED SEWER		SURVEY BAR		PLANING/REMOVAL		DESIGNED BY RPB		CHECKED BY WRJ
	CB LEAD/SSP/DCP		FENCE		DESIGNED BY DML		APPROVED BY BWB		RELEASED FOR CONSTRUCTION
	WATERMAIN		BOC/EDGE OF PAVEMENT		DESIGNED BY		DATE 18/01/26		CONSULTANT FILE NAME 1800599-Burrows-PP-01.dwg
	SUBDRAIN		ELEVATION (33.333)		DESIGNED BY		DATE 18/01/26		THE CITY OF WINNIPEG
	DITCH		TRAFFIC SIGN		DESIGNED BY		DATE 18/01/26		PUBLIC WORKS DEPARTMENT

EXISTING	LEGEND - PLAN	NEW	EXISTING	LEGEND - PLAN	NEW	EXISTING	LEGEND - PLAN	NEW	
	GAS		MANHOLE		CONCRETE PAVEMENT		LOCATION APPROVED		BM 26-026 ELEV 232.298 m
	MTS HANDWELL/PEDESTAL		CATCH BASIN/CATCH PIT		CONC SIDEWALK/MEDIAN		SUPR. U/G STRUCTURES		S.W. Cor. Magnus Ave. & Powers St. 1st in E. Conc. foundation of William White Community School No. 200 Powers St., 1 m.S. & 0.1 m below Tyndal Stone wall of the most N.W. E. Cor. of School.
	HYDRO HANDWELL/CABINET		CURB INLET WITH BOX		ASPHALT PAVEMENT		DATE		MORRISON HERSHFIELD
	CATV/FIBRE OPTIC		TREE		PAVING STONE		COMMITTEE		PROFESSIONAL'S SEAL
	TRAFFIC SIGNALS/PIT		TEST HOLE		GRAVEL		NOTE:		PRELIMINARY DRAWING
	LAND DRAINAGE SEWER		PROPERTY LINE		RAMP CURB		LOCATION OF UNDERGROUND STRUCTURES AS SHOWN ARE BASED ON THE BEST INFORMATION AVAILABLE BUT NO GUARANTEE IS GIVEN THAT ALL EXISTING UTILITIES ARE SHOWN OR THAT THE GIVEN LOCATIONS ARE EXACT. CONFIRMATION OF EXISTENCE AND EXACT LOCATION OF ALL SERVICES MUST BE OBTAINED FROM THE INDIVIDUAL UTILITIES BEFORE PROCEEDING WITH CONSTRUCTION.		NOT TO BE USED FOR CONSTRUCTION
	SANITARY/COMBINED SEWER		SURVEY BAR		PLANING/REMOVAL		DESIGNED BY RPB		CHECKED BY WRJ
	CB LEAD/SSP/DCP		FENCE		DESIGNED BY DML		APPROVED BY BWB		RELEASED FOR CONSTRUCTION
	WATERMAIN		BOC/EDGE OF PAVEMENT		DESIGNED BY		DATE 18/01/26		CONSULTANT FILE NAME 1800599-Burrows-PP-01.dwg
	SUBDRAIN		ELEVATION (33.333)		DESIGNED BY		DATE 18/01/26		THE CITY OF WINNIPEG
	DITCH		TRAFFIC SIGN		DESIGNED BY		DATE 18/01/26		PUBLIC WORKS DEPARTMENT

LOCATION APPROVED
UNDERGROUND STRUCTURES

SUPR. U/G STRUCTURES COMMITTEE DATE

NOTE:
LOCATION OF UNDERGROUND STRUCTURES AS SHOWN ARE BASED ON THE BEST INFORMATION AVAILABLE BUT NO GUARANTEE IS GIVEN THAT ALL EXISTING UTILITIES ARE SHOWN OR THAT THE GIVEN LOCATIONS ARE EXACT. CONFIRMATION OF EXISTENCE AND EXACT LOCATION OF ALL SERVICES MUST BE OBTAINED FROM THE INDIVIDUAL UTILITIES BEFORE PROCEEDING WITH CONSTRUCTION.

No.	REVISIONS	DATE	BY
B	ISSUED FOR TENDER	18/04/12	RPB
A	ISSUED FOR CLIENT REVIEW	18/03/23	RPB

DESIGNED BY	CHECKED BY
RPB	WRJ
DRAWN BY	APPROVED BY
DML	BWB
DATE	DATE
18/01/26	

PRELIMINARY DRAWING

NOT TO BE USED FOR CONSTRUCTION

CONSULTANT FILE NAME
1800599-Burrows-PP-01.dwg

THE CITY OF WINNIPEG
PUBLIC WORKS DEPARTMENT
ENGINEERING DIVISION

2018 LOCAL STREETS PACKAGE
BURROWS AVENUE EASTBOUND
PAVING AND GRADING
POWERS ST TO AIKINS ST

CITY DRAWING NUMBER: N/A
SHEET 17 OF 32
DRAWING No. 17

BID OPPORTUNITY No. 128-2018