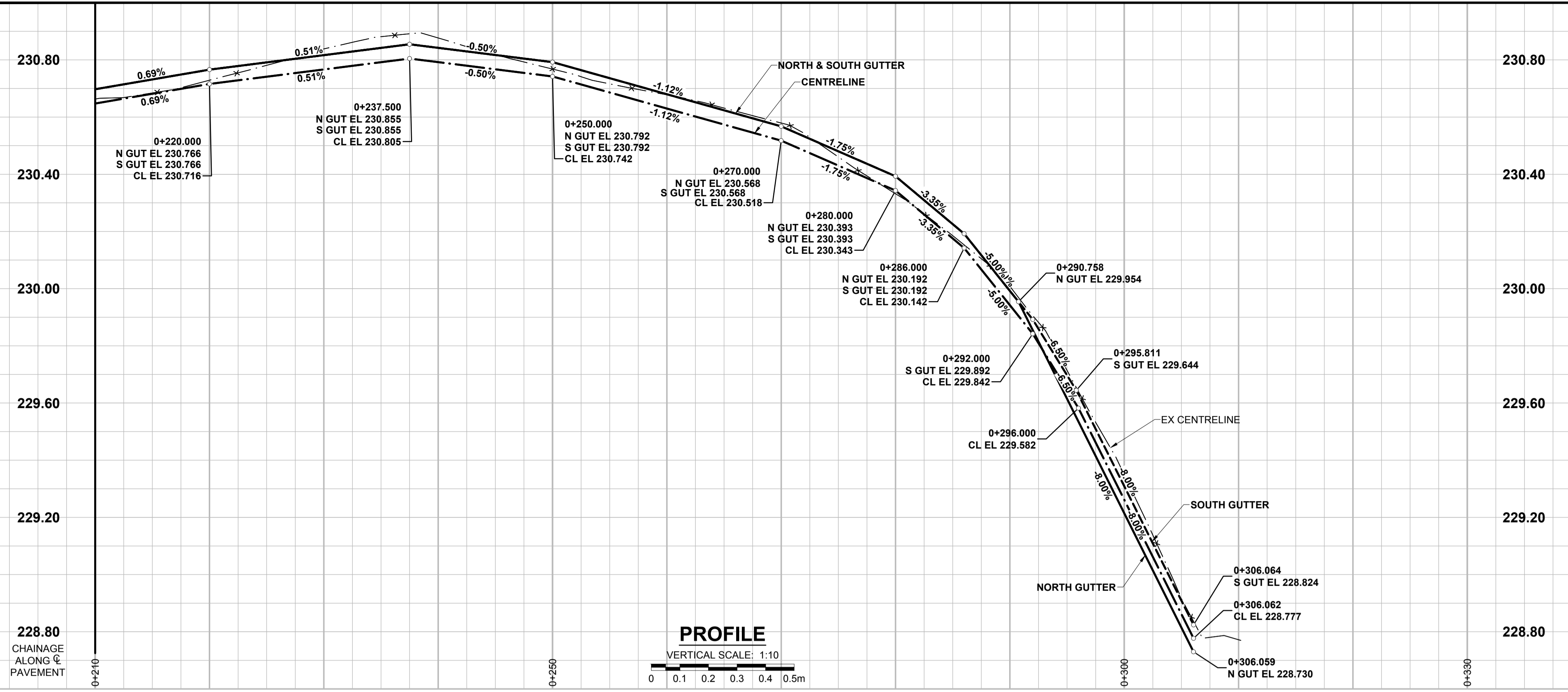
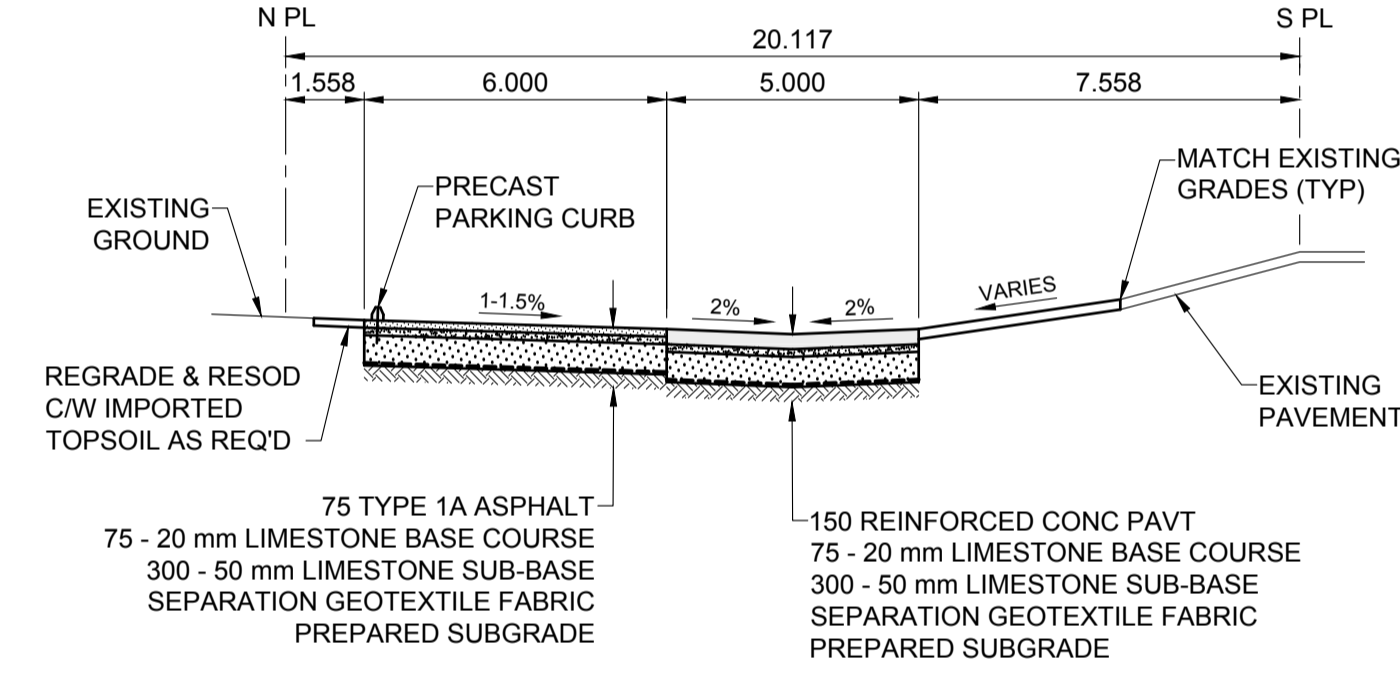
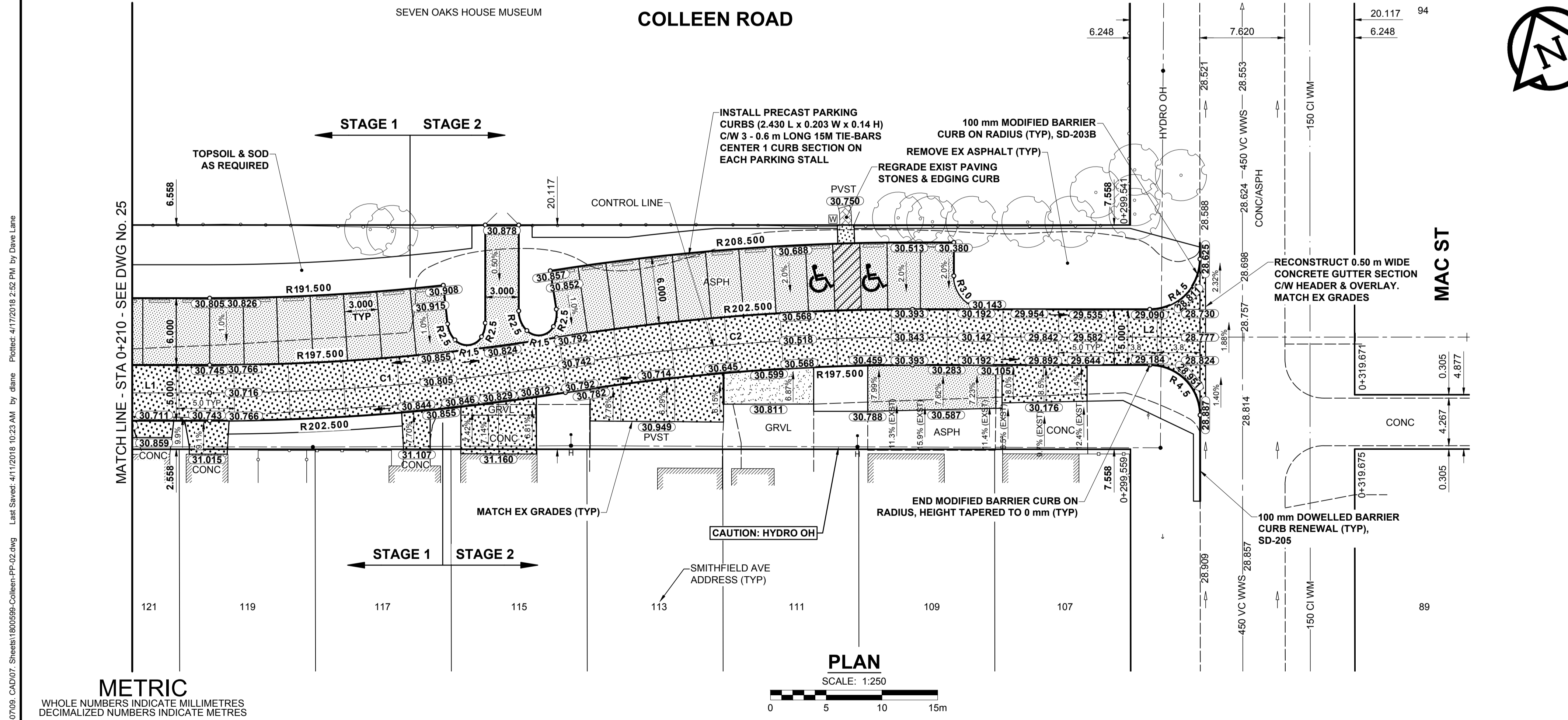


ISO A1 - 594mm x 841mm



- NOTES**
- ADJUST MH AND CB RIMS TO NEW GRADES.
  - LAMP STANDARDS, HYDRO POLES, AND ANCHORS THAT REQUIRE TEMPORARY SUPPORT, REMOVAL OR REPLACEMENT, TO BE DONE SO AT THE EXPENSE OF THE CONTRACTOR AS NECESSARY.
  - CONTRACTOR TO REGRADE/RENEW EXISTING PRIVATE SIDEWALKS TO LIMITS AS SHOWN. SIDEWALKS TO BE RENEWED WITH CONCRETE UNLESS NOTED OTHERWISE.
  - CONTRACTOR TO TAKE PRECAUTIONARY STEPS TO PROTECT EXISTING TREES WITHIN THE LIMITS OF CONSTRUCTION FROM DAMAGE FROM CONSTRUCTION ACTIVITIES AS OUTLINED IN THE SPECIFICATIONS.
  - CONTRACTOR TO CONFIRM THE LOCATION OF ALL UTILITIES/SERVICES IN THE FIELD PRIOR TO CONSTRUCTION.
  - CB SD-023 & SD-024 OFFSETS ARE DIMENSIONED TO BOC. CB SD-025 OFFSETS ARE DIMENSIONED O/C.
  - IN GENERAL, PAVEMENT AND SIDEWALK AREAS TO BE REMOVED. MATCH RECONSTRUCTION LIMITS.
  - REFER TO BID OPPORTUNITY FOR DETAILS REGARDING TRAFFIC MANAGEMENT.
  - EXISTING LONG WATER SERVICES TO BE INSULATED (SD-018). REFER TO BID OPPORTUNITY FOR FURTHER REQUIREMENTS AND AS NOTED IN PLAN.
  - ALL COSTS, MATERIALS AND LABOR ASSOCIATED WITH THE RESTORATION OF THE CATHODIC PROTECTED WATERMAIN WILL BE RESPONSIBILITY OF THE CONTRACTOR.
  - MODIFIED BARRIER CURB & GUTTER INLET FRAME & COVER TF-122.
  - ADD 200.000 m TO ABBREVIATED ELEVATIONS TO OBTAIN GEODETIC ELEVATIONS.

**PROFILE**  
VERTICAL SCALE: 1:10



**TYPICAL PAVEMENT SECTION**  
CONCRETE PAVEMENT STRUCTURE & ASPHALT PARKING STALLS  
SCALE: NTS

CONTROL LINE GEOMETRY										
#	LENGTH	RADIUS	DELTA	TAN	START STA	NORTHING	EASTING	END STA	NORTHING	EASTING
L1	136.952				0+079.999	9465.905	11093.562	0+216.952	9407.766	11217.561
C1	31.656	200.000	9°04'07"	15.861	0+216.952	9407.766	11217.561	0+248.607	9396.647	11247.164
C2	31.656	200.000	9°04'07"	15.861	0+248.607	9396.647	11247.164	0+280.263	9385.528	11276.768
L2	60.000				0+280.263	9385.528	11276.768	0+340.263	9360.057	11331.093

**METRIC**  
WHOLE NUMBERS INDICATE MILLIMETRES  
DECIMALIZED NUMBERS INDICATE METRES

**PLAN**  
SCALE: 1:250

EXISTING	LEGEND - PLAN	NEW	EXISTING	LEGEND - PLAN	NEW	EXISTING	LEGEND - PLAN	NEW	
	GAS		MANHOLE		CONCRETE PAVEMENT		LOCATION APPROVED		BM 26-042
	MTS HANDWELL/PEDESTAL		CATCH BASIN/CATCH PIT		CONC SIDEWALK/MEDIAN		UNDERGROUND STRUCTURES		ELEV 228.998 m
	HYDRO HANDWELL/CABINET		CURB INLET WITH BOX		ASPHALT PAVEMENT		SUPR. LIG. STRUCTURES		N. side Matheson Ave. E. Blv'n. Jones St. & St. Cross St. Tot. in most Ely. Conc. foundation of Ross Pina Synagogue. 1 m N. & 1.7 m below brick of S.E. Cor. of most Ely. Conc. wall.
	CATV/FIBRE OPTIC		TREE		PAVING STONE		DATE		1.7 m below brick of S.E. Cor. of most Ely. Conc. wall.
	TRAFFIC SIGNALS/PIT		TEST HOLE		GRAVEL		COMMITTEE		
	LAND DRAINAGE SEWER		PROPERTY LINE		RAMP CURB		NOTE:		
	SANITARY/COMBINED SEWER		SURVEY BAR		PLANING/REMOVAL		LOCATION OF UNDERGROUND STRUCTURES AS SHOWN ARE BASED ON THE BEST INFORMATION AVAILABLE BUT NO GUARANTEE IS GIVEN THAT ALL EXISTING UTILITIES ARE SHOWN OR THAT THE GIVEN LOCATIONS ARE EXACT. CONFIRMATION OF EXISTENCE AND EXACT LOCATION OF ALL SERVICES MUST BE OBTAINED FROM THE INDIVIDUAL UTILITIES BEFORE PROCEEDING WITH CONSTRUCTION.		
	CB LEAD/SS/DCP		FENCE						
	WATERMAIN		BOC/EDGE OF PAVEMENT						
	SUBDRAIN		ELEVATION (33.333)						
	DITCH		TRAFFIC SIGN						

**LOCATION APPROVED**  
UNDERGROUND STRUCTURES

SUPR. LIG. STRUCTURES DATE  
COMMITTEE

**NOTE:**  
LOCATION OF UNDERGROUND STRUCTURES AS SHOWN ARE BASED ON THE BEST INFORMATION AVAILABLE BUT NO GUARANTEE IS GIVEN THAT ALL EXISTING UTILITIES ARE SHOWN OR THAT THE GIVEN LOCATIONS ARE EXACT. CONFIRMATION OF EXISTENCE AND EXACT LOCATION OF ALL SERVICES MUST BE OBTAINED FROM THE INDIVIDUAL UTILITIES BEFORE PROCEEDING WITH CONSTRUCTION.

No.	REVISIONS	DATE	BY
B	ISSUED FOR TENDER	18/04/12	RPB
A	ISSUED FOR CLIENT REVIEW	18/03/23	RPB
		YY/MM/DD	

**MORRISON HERSHFIELD**

DESIGNED BY: WRJ  
DRAWN BY: DML

CHECKED BY: RPB  
APPROVED BY: BWB

RELEASED FOR CONSTRUCTION

HOR SCALE: 1:250  
VERT SCALE: 1:10

DATE: 18/01/26

PROFESSIONAL'S SEAL

**PRELIMINARY DRAWING**

NOT TO BE USED FOR CONSTRUCTION

CONSULTANT FILE NAME: 1800599-Colleen-PP-02.dwg

**THE CITY OF WINNIPEG**  
PUBLIC WORKS DEPARTMENT  
ENGINEERING DIVISION

**2018 LOCAL STREETS PACKAGE**  
COLLEEN AVENUE  
JONES ST TO MAC ST  
CONCRETE RECONSTRUCTION  
PAVING AND GRADING  
STA 0+210 TO MAC ST

CITY DRAWING NUMBER: N/A  
SHEET 26 OF 32  
DRAWING No. 26

BID OPPORTUNITY No. 128-2018

P:\2018\1800599\2018 Local Streets Program\18-R-0709\_CAD\07\_Sheets\1800599-Colleen-PP-02.dwg Last Saved: 4/11/2018 10:23 AM by Diane Phibbs 4/11/2018 2:52 PM by Dave Lane