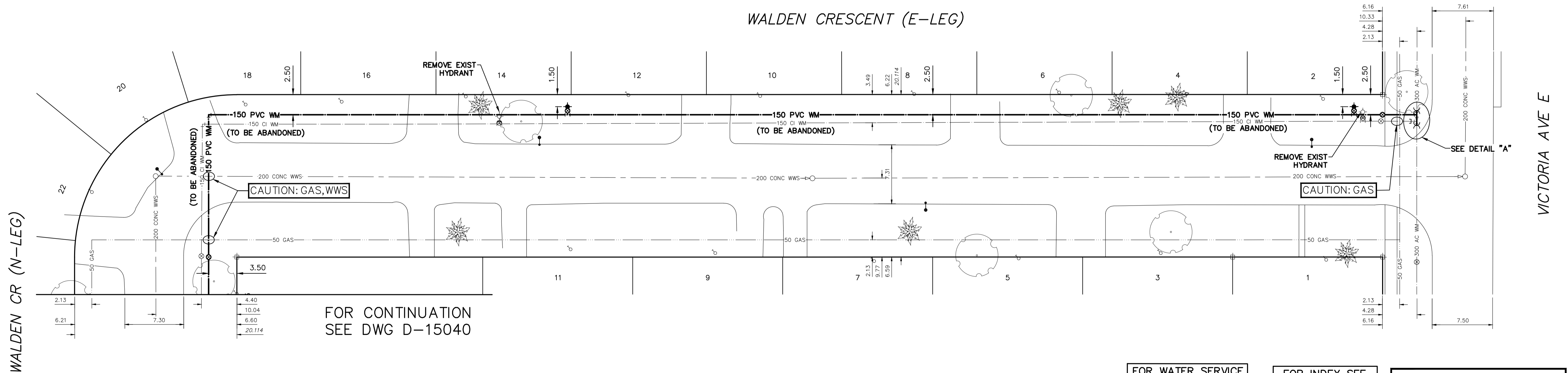


NOTE: CHAINAGES SHOWN ARE ALONG
E. R. OF WALDEN CRESCENT (E-LEG)

WALDEN CRESCENT (E-LEG)

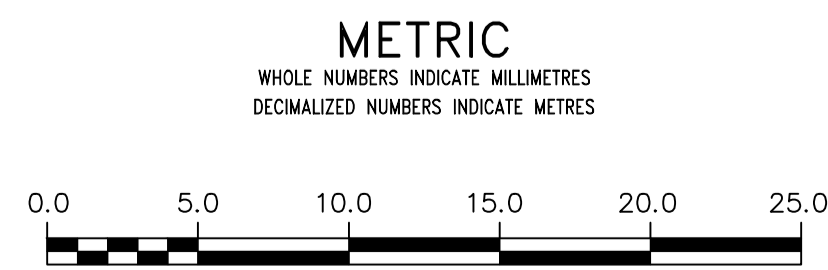


FOR CONTINUATION
SEE DWG D-15040

FOR WATER SERVICE
TABLE SEE D-15040

FOR INDEX SEE
D-15036

NOTE: ALL VALVES TO BE INSTALLED
CLOCKWISE TO CLOSE



LOCATION APPROVED UNDERGROUND STRUCTURES	
SUPV. U/G STRUCTURES COMMITTEE	DATE
NOTE: LOCATION OF UNDERGROUND STRUCTURES AS SHOWN ARE BASED ON THE BEST INFORMATION AVAILABLE BUT NO GUARANTEE IS GIVEN THAT ALL EXISTING UTILITIES ARE SHOWN OR THAT THE GIVEN LOCATIONS ARE EXACT. CONFIRMATION OF EXISTENCE AND EXACT LOCATION OF ALL SERVICES MUST BE OBTAINED FROM THE INDIVIDUAL UTILITIES BEFORE PROCEEDING WITH CONSTRUCTION.	
NO.	REVISIONS
DATE	BY

B.M. ELEV.	

DESIGNED BY	TS	CHECKED BY	SC
DRAWN BY	RS	APPROVED BY	KZ
SCALE:	HORIZONTAL 1:250 VERTICAL 1:50		
DATE	2018 04 30	RELEASED FOR CONSTRUCTION	K. ZUREK
PLOT DATE:	2018 04 30	DATE	2018 04 30

ENGINEER'S SEAL
ORIGINAL SIGNED
BY S.R.J. COURNOYER
18/04/30
CONSULTANT DRAWING NUMBER

THE CITY OF WINNIPEG
 WATER AND WASTE DEPARTMENT
 ENGINEERING DIVISION
 2018 WATER MAIN RENEWALS
 CONTRACT 6
WALDEN CRESCENT (E-LEG)
 WALDEN CRESCENT (N-LEG) TO
 VICTORIA AVENUE EAST
 SHEET 7 OF 13
 CITY DRAWING NUMBER
D-15041