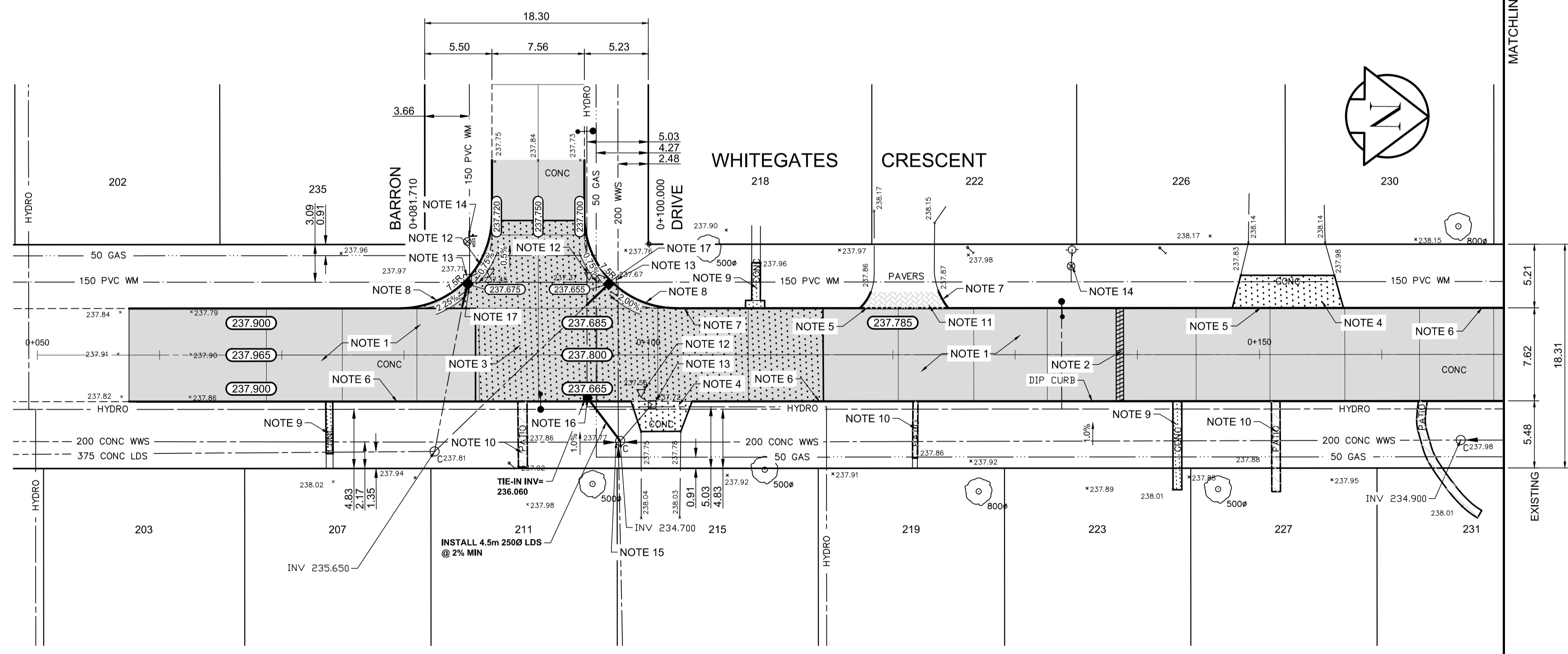


MATCHLINE STATION 0+170



**REFERENCE NOTES**

- A. PAVEMENT DIMENSIONS ARE TO BACK OF CURB
- B. BASELINE IS CENTRE LINE RIGHT-OF-WAY
- C. PROPERTY LINES OBTAINED FROM CITY OF WINNIPEG L.B.I.S., AND NO SCALE FACTOR WAS APPLIED
- D. REFER TO AECOM FIELD BOOK NO. 4997

**CONSTRUCTION NOTES**

1. PLACE NEW ASPHALTIC PAVEMENT TYPE 1A (AVG THICKNESS 85mm)
2. PARTIAL DEPTH PLANING OF EXISTING JOINTS AND ASPHALT PATCHING OF EXISTING JOINTS USING TYPE 1A
3. REMOVE EXISTING CONCRETE PAVEMENT AND CONSTRUCT NEW 150mm REINFORCED CONCRETE PAVEMENT c/w 85mm ASPHALTIC OVERLAY
4. REMOVE EXISTING CONCRETE PAVEMENT AND CONSTRUCT NEW 150mm REINFORCED CONCRETE PAVEMENT
5. PLANE EXISTING MOUNTABLE CURB AND CONSTRUCT NEW LIP CURB (40mm REVEAL HT)
6. PLANE EXISTING MOUNTABLE CURB AND CONSTRUCT NEW BARRIER CURB (100mm REVEAL HT, DOWELLED)
7. CONSTRUCT NEW BARRIER CURB (100mm REVEAL HT, SEPARATE)
8. REMOVE EXISTING BARRIER CURB AND CONSTRUCT NEW MODIFIED BARRIER CURB (150mm HT, INTEGRAL)
9. RENEW EXISTING 100mm CONCRETE SIDEWALK
10. REGRADE EXISTING PATIO BLOCKS
11. REGRADE EXISTING PAVING STONES
12. REMOVE EXISTING CATCHPIT
13. REMOVE EXISTING CATCHBASIN
14. ADJUST EXISTING WATER VALVE TO GRADE
15. ADJUST EXISTING MANHOLE/CATCH BASIN TO GRADE
16. INSTALL NEW CATCHBASIN (SD-024) c/w CURB AND GUTTER INLET (AP-008 & AP-009) AND CONNECT TO EXISTING MANHOLE
17. INSTALL NEW CATCHBASIN (SD-024) c/w CURB AND GUTTER INLET (AP-008 & AP-009) AND CONNECT TO EXISTING LEAD

**AECOM**  
 Certificate of Authorization  
 AECOM Canada Ltd.  
 No. 4671 Date: \_\_\_\_\_

**METRIC**  
 WHOLE NUMBERS INDICATE MILLIMETRES  
 DECIMALIZED NUMBERS INDICATE METRES

EXISTING	LEGEND - PLAN	PROPOSED	EXISTING	LEGEND - PLAN	PROPOSED	EXISTING	LEGEND - PROFILE	PROPOSED
150 mm W.M.	WATERMAIN	150 mm W.M.	---	HYDRO	---	---	PROFILE	---
300mm L.D.S.	LAND DRAINAGE SEWER	300mm L.D.S.	---	M.T.S.	---	---	WEST GUTTER	---
250mm W.W.S.	WASTEWATER SEWER	250mm W.W.S.	---	CONCRETE	---	---	EAST GUTTER	---
---	VALVE	---	---	ASPHALT	---	---	N/W PROPERTY LINE	---
---	MANHOLE	---	---	PROPERTY LINE	---	---	S/E PROPERTY LINE	---
---	CATCH BASIN	---	---	SURVEY BAR	---	---	---	---
---	CATCH PIT	---	---	ELEVATION	235.750	---	---	---
---	JUNCTIONS	---	---	TREE	---	---	---	---
---	CULVERT	---	---	SIDEWALK RAMP	---	---	---	---
---	GAS	---	---	CONCRETE SIDEWALK	---	---	---	---
---	---	---	---	FENCE	---	---	---	---

**LOCATION APPROVED UNDERGROUND STRUCTURES**

SUPV. U/G STRUCTURES COMMITTEE DATE

**NOTE:**  
 LOCATION OF UNDERGROUND STRUCTURES AS SHOWN ARE BASED ON THE BEST INFORMATION AVAILABLE, BUT NO GUARANTEE IS GIVEN THAT ALL EXISTING UTILITIES ARE SHOWN OR THAT THE GIVEN LOCATIONS ARE EXACT. CONFIRMATION OF EXISTENCE AND EXACT LOCATION OF ALL SERVICES MUST BE OBTAINED FROM THE INDIVIDUAL UTILITIES BEFORE PROCEEDING WITH CONSTRUCTION.

B.M. 41-015 N side Sansome Ave. E. of Bedford St. Tab. in S. Conc. foundation of Sansome Junior High School. 1.5 m E. & 0.1 m below brick of ELEV. 237.802 ± W. Cor. of road S/W. Conc. foundation of lot/lot.

NO.	ISSUED FOR TENDER	DATE	BY
0	ISSUED FOR TENDER	04/10/2018	BC
A	ISSUED FOR REVIEW	03/23/2018	BC
NO.	REVISIONS	DATE	BY

**AECOM**

DESIGNED BY	SS	CHECKED BY	BC/KWR
DRAWN BY	JC	APPROVED BY	
HOR. SCALE:	1:250	RELEASED FOR CONSTRUCTION BY:	
VERTICAL:	1:10	DATE	

ENGINEER'S SEAL

PROVINCE OF MANITOBA  
**K.W. RAE**  
 REGISTERED PROFESSIONAL ENGINEER

CONSULTANT DRAWING NO. CT-01

**THE CITY OF WINNIPEG**  
 PUBLIC WORKS DEPARTMENT  
 ENGINEERING DIVISION

2018 RESIDENTIAL STREET RENEWAL PROGRAM

WHITEGATES CRESCENT - BARRON STREET TO SANSOME AVENUE  
 CONCRETE PAVEMENT REHABILITATION  
 BARRON DRIVE TO STATION 0+170

CITY DRAWING NUMBER SHEET 01 OF 30