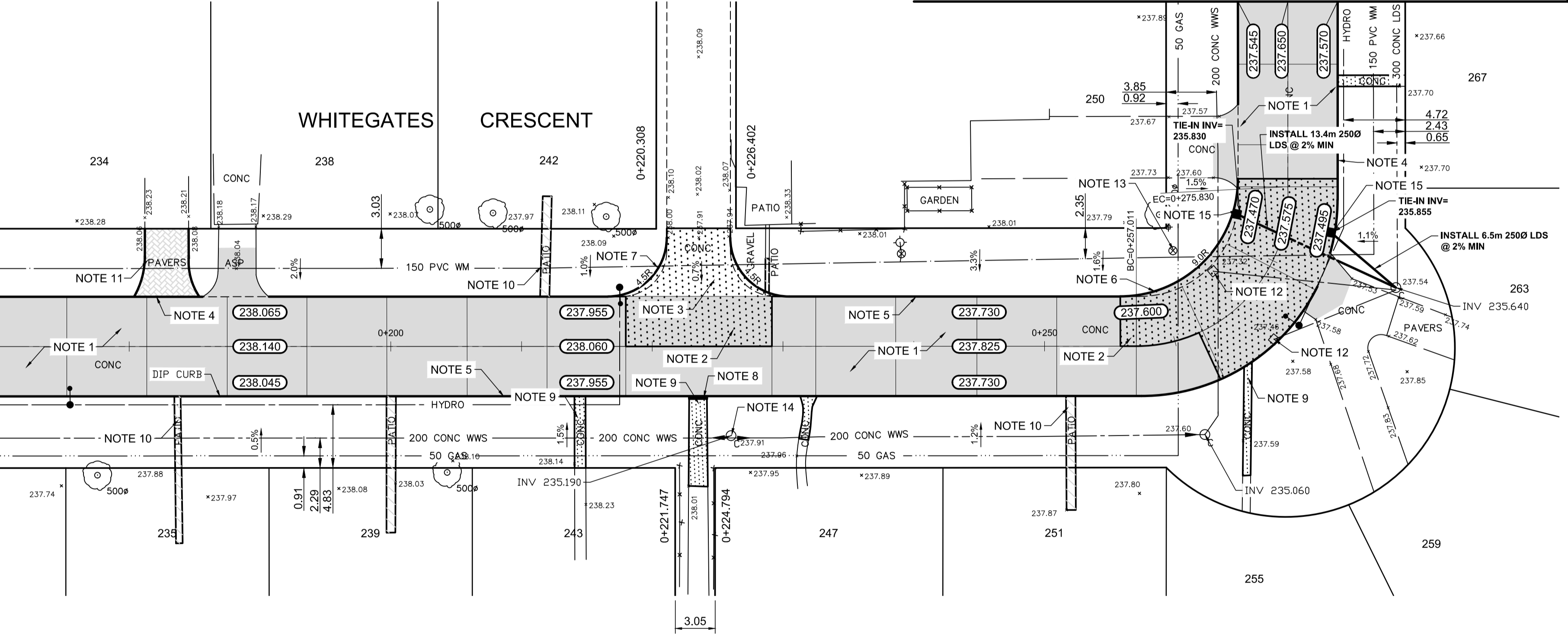


MATCHLINE STATION 0+170

MATCHLINE STATION 0+290

WHITEGATES CRESCENT



REFERENCE NOTES

- A. PAVEMENT DIMENSIONS ARE TO BACK OF CURB
- B. BASELINE IS CENTRE LINE RIGHT-OF-WAY
- C. PROPERTY LINES OBTAINED FROM CITY OF WINNIPEG L.B.I.S., AND NO SCALE FACTOR WAS APPLIED
- D. REFER TO AECOM FIELD BOOK NO. 4997

CONSTRUCTION NOTES

1. PLACE NEW ASPHALTIC PAVEMENT TYPE 1A (AVG THICKNESS 85mm)
2. REMOVE EXISTING CONCRETE PAVEMENT AND CONSTRUCT NEW 150mm REINFORCED CONCRETE PAVEMENT c/w 85mm ASPHALTIC OVERLAY
3. REMOVE EXISTING CONCRETE PAVEMENT AND CONSTRUCT NEW 150mm REINFORCED CONCRETE PAVEMENT
4. PLANE EXISTING MOUNTABLE CURB AND CONSTRUCT NEW LIP CURB (40mm REVEAL HT)
5. PLANE EXISTING MOUNTABLE CURB AND CONSTRUCT NEW BARRIER CURB (100mm REVEAL HT, DOWELLED)
6. CONSTRUCT NEW BARRIER CURB (100mm REVEAL HT, SEPARATE)
7. CONSTRUCT NEW MODIFIED BARRIER CURB (150mm HT, INTEGRAL)
8. RENEW EXISTING RAMP CURB (10mm REVEAL HT, MONOLITHIC)
9. RENEW EXISTING 100mm CONCRETE SIDEWALK
10. REGRADE EXISTING PATIO BLOCKS
11. REGRADE EXISTING PAVING STONES
12. REMOVE EXISTING CATCHBASIN AND ABANDON EXISTING LEAD
13. ADJUST EXISTING WATER VALVE TO GRADE
14. ADJUST EXISTING MANHOLE/CATH BASIN TO GRADE
15. INSTALL NEW CATCHBASIN (SD-024) c/w CURB AND GUTTER INLET (AP-008 & AP-009) AND CONNECT TO EXISTING MANHOLE



METRIC
WHOLE NUMBERS INDICATE MILLIMETRES
DECIMALIZED NUMBERS INDICATE METRES

150 mm W.M.	WATERMAIN	150 mm W.M.	HYDRO	— — — — —	— — — — —	— — — — —	— — — — —
Hydrant	HYDRANT	Valve	M.T.S.	CONCRETE	ASPHALT	PROPERTY LINE	SURVEY BAR
300mm L.D.S.	LAND DRAINAGE SEWER	250mm W.W.S.	MANHOLE	CATCH BASIN	CATCH PIT	JUNCTIONS	CULVERT
250mm W.W.S.	WASTEWATER SEWER	Manhole	Catch Pit	Junctions	Culvert	Gas	Existing
Proposed	Proposed	Existing	Existing	Existing	Existing	Existing	Existing

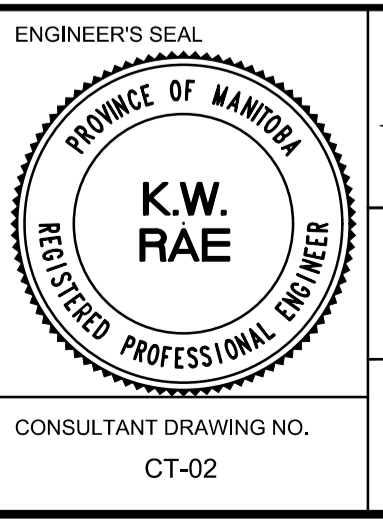
LOCATION APPROVED UNDERGROUND STRUCTURES

SUPV. U/G STRUCTURES COMMITTEE DATE

NOTE:
LOCATION OF UNDERGROUND STRUCTURES AS SHOWN ARE BASED ON THE BEST INFORMATION AVAILABLE, BUT NO GUARANTEE IS GIVEN THAT ALL EXISTING UTILITIES ARE SHOWN OR THAT THE GIVEN LOCATIONS ARE EXACT. CONFIRMATION OF EXISTENCE AND EXACT LOCATION OF ALL SERVICES MUST BE OBTAINED FROM THE INDIVIDUAL UTILITIES BEFORE PROCEEDING WITH CONSTRUCTION.

B.M. 41-015	N. Side Sansome Ave. E. of Bedford St. Tab. in S. Conc. foundation of Sansome Junior High School. 1.5 m E. & 0.1 m below brick of ELEV. 237.802 2-W. Cor. of road Blk. Conc. foundation of lot.		
0	ISSUED FOR TENDER	04/10/2018	BC
A	ISSUED FOR REVIEW	03/23/2018	BC
NO.	REVISIONS	DATE	BY

AECOM	
DESIGNED BY: SS	CHECKED BY: BC/KWR
DRAWN BY: JC	APPROVED BY:
HOR. SCALE: 1:250	RELEASED FOR CONSTRUCTION BY:
VERTICAL: 1:10	DATE



THE CITY OF WINNIPEG
PUBLIC WORKS DEPARTMENT
ENGINEERING DIVISION

2018 RESIDENTIAL STREET RENEWAL PROGRAM

WHITEGATES CRESCENT - BARRON STREET TO SANSOME AVENUE
CONCRETE PAVEMENT REHABILITATION
FROM STATION 0+170 TO STATION 0+290

CITY DRAWING NUMBER SHEET 02 OF 30