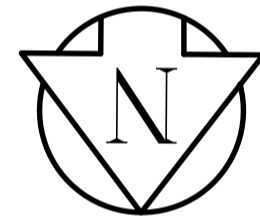


MATCHLINE STATION 0+290

MATCHLINE STATION 0+390

WHITEGATES CRESCENT

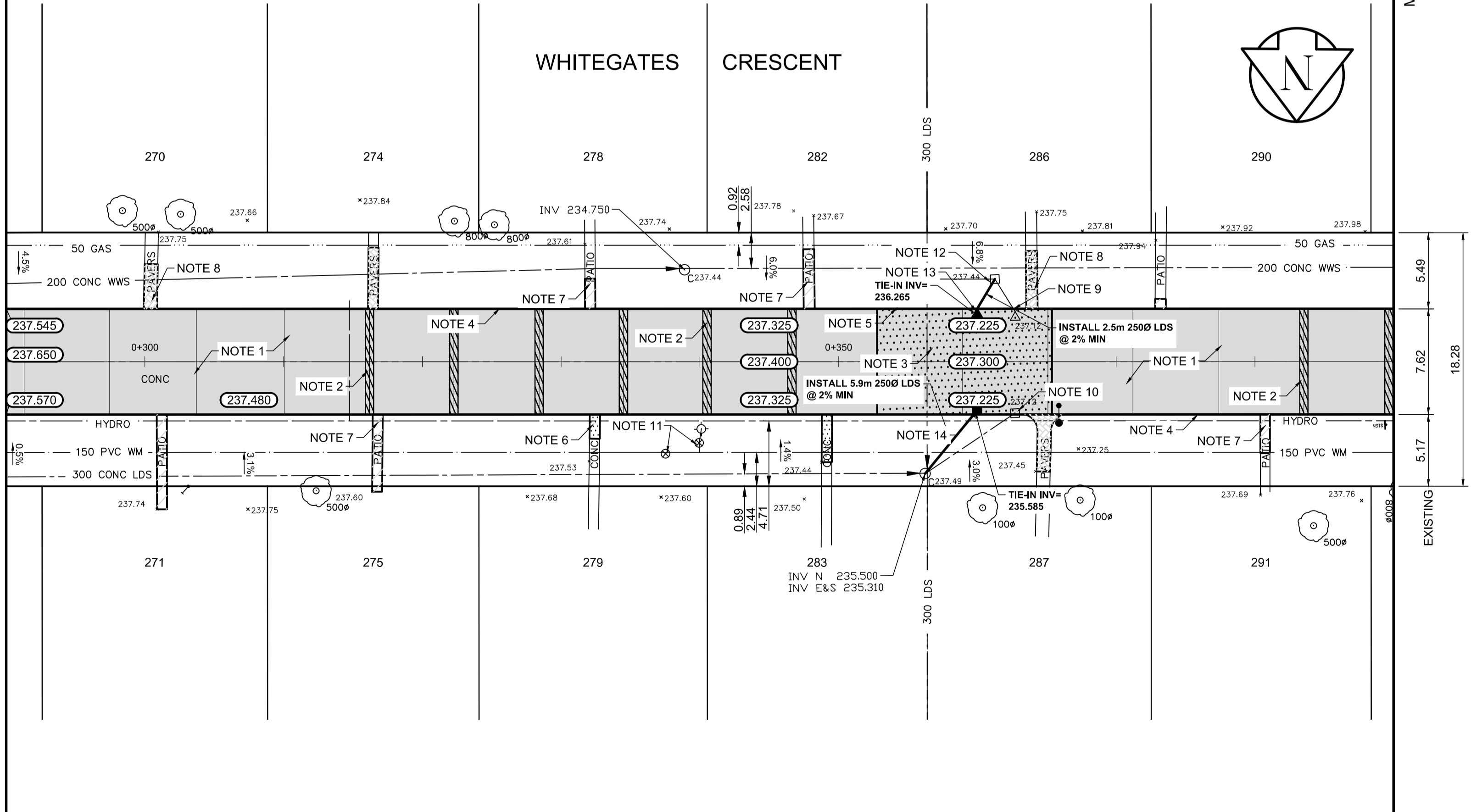


REFERENCE NOTES

- A. PAVEMENT DIMENSIONS ARE TO BACK OF CURB
- B. BASELINE IS CENTRE LINE RIGHT-OF-WAY
- C. PROPERTY LINES OBTAINED FROM CITY OF WINNIPEG L.B.I.S., AND NO SCALE FACTOR WAS APPLIED
- D. REFER TO AECOM FIELD BOOK NO. 4997

CONSTRUCTION NOTES

1. PLACE NEW ASPHALTIC PAVEMENT TYPE 1A (AVG THICKNESS 85mm)
2. PARTIAL DEPTH PLANING OF EXISTING JOINTS AND ASPHALT PATCHING OF EXISTING JOINTS USING TYPE 1A
3. REMOVE EXISTING CONCRETE PAVEMENT AND CONSTRUCT NEW 150mm REINFORCED CONCRETE PAVEMENT c/w 85mm ASPHALTIC OVERLAY
4. PLANE EXISTING MOUNTABLE CURB AND CONSTRUCT NEW BARRIER CURB (100mm REVEAL HT. DOWELLED)
5. CONSTRUCT NEW BARRIER CURB (100mm REVEAL HT. SEPARATE)
6. RENEW EXISTING 100mm CONCRETE SIDEWALK
7. REGRADE EXISTING PATIO BLOCKS
8. REGRADE EXISTING PAVING STONES
9. REMOVE EXISTING CATCHPIT
10. REMOVE EXISTING CATCHBASIN
11. ADJUST EXISTING WATER VALVE TO GRADE
12. ADJUST EXISTING MANHOLE/CATCH BASIN TO GRADE
13. INSTALL NEW CATCHPIT (SD-023) c/w CURB AND GUTTER INLET (AP-008 & AP-009) AND CONNECT TO EXISTING CATCHBASIN
14. INSTALL NEW CATCHBASIN (SD-024) c/w CURB AND GUTTER INLET (AP-008 & AP-009) AND CONNECT TO EXISTING LEAD



AECOM
 Certificate of Authorization
 AECOM Canada Ltd.
 No. 4671 Date: _____

METRIC
 WHOLE NUMBERS INDICATE MILLIMETRES
 DECIMALIZED NUMBERS INDICATE METRES

EXISTING	LEGEND - PLAN	PROPOSED	EXISTING	LEGEND - PLAN	PROPOSED	EXISTING	LEGEND - PROFILE	PROPOSED
150 mm W.M.	WATERMAIN	150 mm W.M.	---	HYDRO	---	---	PROFILE	---
Hydrant	HYDRANT	Hydrant	---	M.T.S.	---	---	WEST GUTTER	---
Valve	VALVE	Valve	---	CONCRETE	---	---	EAST GUTTER	---
300mm L.D.S.	LAND DRAINAGE SEWER	300mm L.D.S.	---	ASPHALT	---	---	N/W PROPERTY LINE	---
250mm W.W.S.	WASTEWATER SEWER	250mm W.W.S.	---	PROPERTY LINE	---	---	S/E PROPERTY LINE	---
Manhole	MANHOLE	Manhole	---	SURVEY BAR	---	---		---
Catch Basin	CATCH BASIN	Catch Basin	---	ELEVATION	235.750	---		---
Catch Pit	CATCH PIT	Catch Pit	---	TREE	---	---		---
Junctions	JUNCTIONS	Junctions	---	SIDEWALK RAMP	---	---		---
Culvert	CULVERT	Culvert	---	CONCRETE SIDEWALK	---	---		---
Gas	GAS	Gas	---	FENCE	---	---		---

LOCATION APPROVED
UNDERGROUND STRUCTURES

SUPV. U/G STRUCTURES COMMITTEE DATE

NOTE:
 LOCATION OF UNDERGROUND STRUCTURES AS SHOWN ARE BASED ON THE BEST INFORMATION AVAILABLE, BUT NO GUARANTEE IS GIVEN THAT ALL EXISTING UTILITIES ARE SHOWN OR THAT THE GIVEN LOCATIONS ARE EXACT. CONFIRMATION OF EXISTENCE AND EXACT LOCATION OF ALL SERVICES MUST BE OBTAINED FROM THE INDIVIDUAL UTILITIES BEFORE PROCEEDING WITH CONSTRUCTION.

B.M. 41-015 N side Sansome Ave. E. of Bedford St. Tab. in S. Conc. foundation of Sansome Junior High School. 1.5 m E. & 0.1 m below brick of ELEV. 237.802 N.W. Cor. of road Bly. Conc. foundation of lot.

NO.	REVISIONS	DATE	BY
0	ISSUED FOR TENDER	04/10/2018	BC
A	ISSUED FOR REVIEW	03/23/2018	BC

AECOM

DESIGNED BY	SS	CHECKED BY	BC/KWR
DRAWN BY	JC	APPROVED BY	
HOR. SCALE:	1:250	RELEASED FOR CONSTRUCTION BY:	
VERTICAL:	1:10	DATE	

ENGINEER'S SEAL
 PROVINCE OF MANITOBA
K.W. RAE
 REGISTERED PROFESSIONAL ENGINEER
 CONSULTANT DRAWING NO. CT-03

THE CITY OF WINNIPEG
 PUBLIC WORKS DEPARTMENT
 ENGINEERING DIVISION

2018 RESIDENTIAL STREET RENEWAL PROGRAM

WHITEGATES CRESCENT - BARRON STREET TO SANSOME AVENUE
 CONCRETE PAVEMENT REHABILITATION
 FROM STATION 0+290 TO STATION 0+390

CITY DRAWING NUMBER SHEET 03 OF 30