

- REFERENCE NOTES**
- PAVEMENT DIMENSIONS ARE TO BACK OF CURB
 - BASELINE IS CENTRE LINE RIGHT-OF-WAY
 - PROPERTY LINES OBTAINED FROM CITY OF WINNIPEG L.B.I.S., AND NO SCALE FACTOR WAS APPLIED
 - REFER TO AECOM FIELD BOOK NO. 4999

- CONSTRUCTION NOTES**
- PLANE EXISTING ASPHALT PAVEMENT
 - PLACE NEW ASPHALT PAVEMENT OVERLAY TYPE 1A (100mm AVG. THICKNESS)
 - REMOVE EXISTING CONCRETE PAVEMENT AND INSTALL NEW 150mm REINFORCED CONCRETE PAVEMENT c/w 100mm ASPHALTIC OVERLAY
 - PARTIAL DEPTH PLANING OF EXISTING JOINTS AND ASPHALT PATCHING OF EXISTING JOINTS USING TYPE 1A
 - RENEW EXISTING CONCRETE BARRIER CURB (150mm REVEAL HT. DOWELLED)
 - REMOVE EXISTING CURB AND INSTALL CONCRETE MODIFIED BARRIER CURB (180mm REVEAL HT. DOWELLED)
 - INSTALL NEW CONCRETE MODIFIED BARRIER CURB (180mm REVEAL HT. INTEGRAL)
 - INSTALL NEW CONCRETE CURB RAMP (10mm HT. INTEGRAL)
 - INSTALL NEW CONCRETE CURB RAMP (10mm HT. MONOLITHIC)
 - RENEW EXISTING 100mm CONCRETE SIDEWALK
 - CONSTRUCT NEW 100mm CONCRETE SIDEWALK
 - ADJUST MANHOLE / CATCHBASIN TO GRADE
 - ADJUST VALVE TO GRADE
 - INSTALL DETECTABLE SURFACE WARNING TILE
 - REMOVE EXISTING CONCRETE PAVEMENT AND CONSTRUCT NEW 150mm REINFORCED CONCRETE PAVEMENT



METRIC
WHOLE NUMBERS INDICATE MILLIMETRES
DECIMALIZED NUMBERS INDICATE METRES

EXISTING	LEGEND - PLAN	PROPOSED	EXISTING	LEGEND - PLAN	PROPOSED	EXISTING	LEGEND - PROFILE	PROPOSED
150 mm W.M.	WATERMAIN	150 mm W.M.	HYDRO	M.T.S.	— x —	— x —	PROFILE	
300mm L.D.S.	LAND DRAINAGE SEWER	300mm L.D.S.	CONCRETE		—	—	NORTH GUTTER	
250mm W.W.S.	WASTEWATER SEWER	250mm W.W.S.	ASPHALT		—	—	SOUTH GUTTER	
○	MANHOLE	●	PROPERTY LINE		—	—	N/W PROPERTY LINE	
□	CATCH BASIN	■	SURVEY BAR		—	—	S/E PROPERTY LINE	
▽	CATCH PIT	▼	ELEVATION	(235.750)				
+	JUNCTIONS	+	TREE					
—	CULVERT	—	SIDEWALK RAMP					
—	GAS	—	CONCRETE SIDEWALK					
—		—	FENCE					

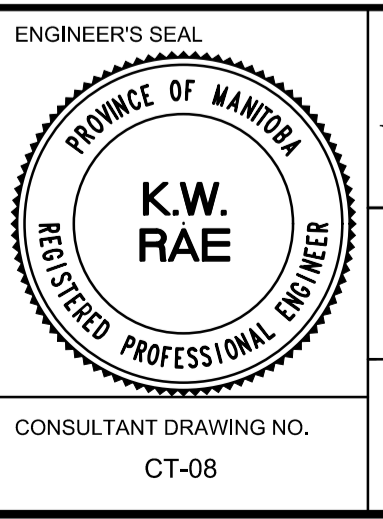
LOCATION APPROVED UNDERGROUND STRUCTURES

SUPV. U/G STRUCTURES COMMITTEE DATE

NOTE:
LOCATION OF UNDERGROUND STRUCTURES AS SHOWN ARE BASED ON THE BEST INFORMATION AVAILABLE, BUT NO GUARANTEE IS GIVEN THAT ALL EXISTING UTILITIES ARE SHOWN OR THAT THE GIVEN LOCATIONS ARE EXACT. CONFIRMATION OF EXISTENCE AND EXACT LOCATION OF ALL SERVICES MUST BE OBTAINED FROM THE INDIVIDUAL UTILITIES BEFORE PROCEEDING WITH CONSTRUCTION.

B.M. 40-025	S.E. Cor. Ness Ave. & Muriel St., Tdlt. in most N.Y. Conc. foundation of Ness Junior High School, 2.5 m ELEV. 236.544	S.F. W. & 0.1 m below brick of N.E. Cor. of school.
0	ISSUED FOR TENDER	04/10/2018 BC
A	ISSUED FOR REVIEW	03/23/2018 BC
NO.	REVISIONS	DATE BY

AECOM		DESIGNED BY: JC	CHECKED BY: BC/KWR
		DRAWN BY: JC	APPROVED BY:
		HOR. SCALE: 1:250	RELEASED FOR CONSTRUCTION BY:
		VERTICAL: 1:10	DATE



THE CITY OF WINNIPEG
PUBLIC WORKS DEPARTMENT
ENGINEERING DIVISION

2018 RESIDENTIAL STREET RENEWAL PROGRAM

NESS AVENUE - CAVALIER DRIVE TO MURIEL STREET
CONCRETE PAVEMENT REHABILITATION
CAVALIER DRIVE TO STATION 0+180

CITY DRAWING NUMBER: SHEET 08 OF 29

CONSULTANT DRAWING NO. CT-08