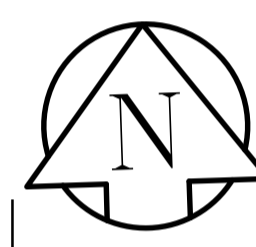
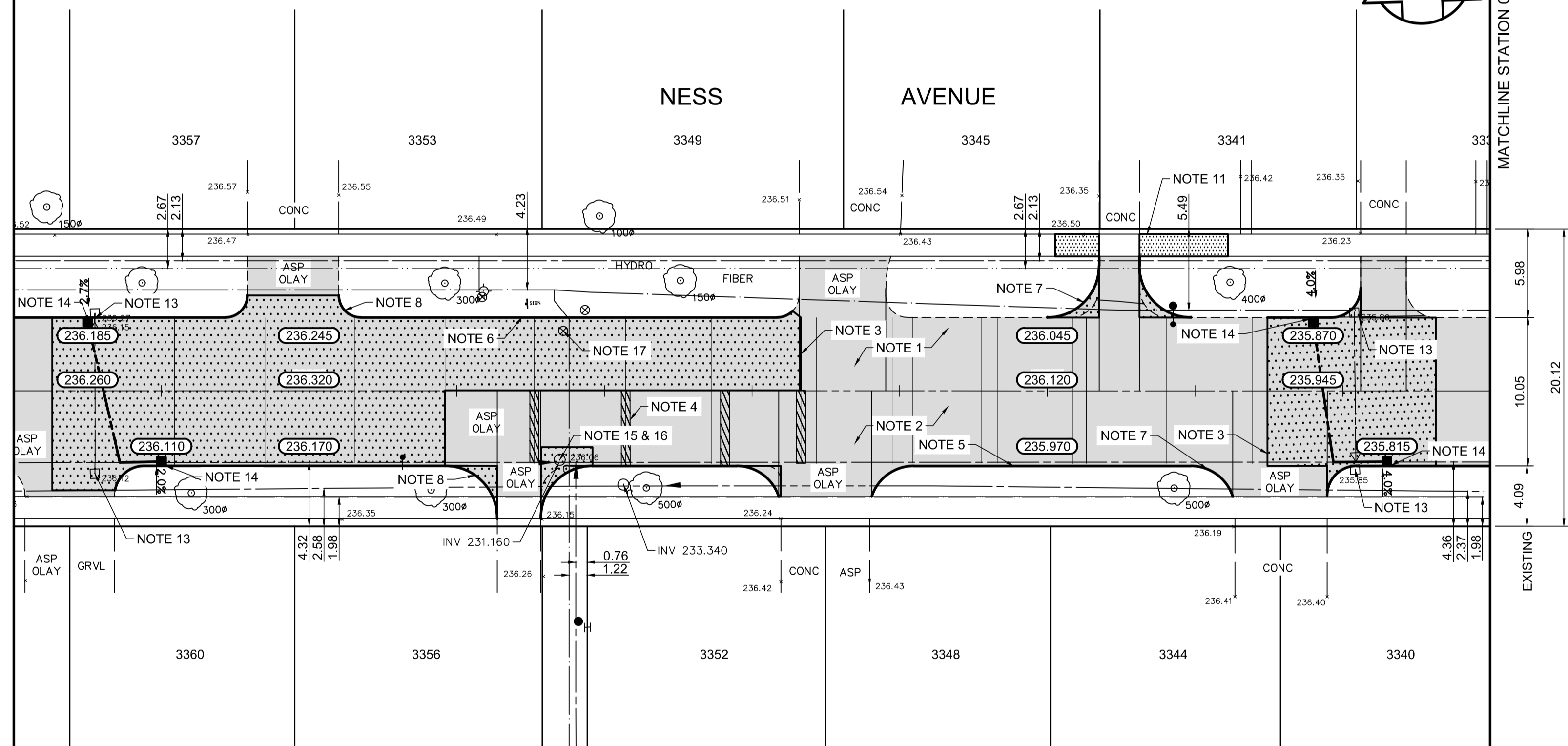


MATCHLINE STATION 0+180

MATCHLINE STATION 0+280



NESS AVENUE



REFERENCE NOTES

- A. PAVEMENT DIMENSIONS ARE TO BACK OF CURB
- B. BASELINE IS CENTRE LINE RIGHT-OF-WAY
- C. PROPERTY LINES OBTAINED FROM CITY OF WINNIPEG L.B.I.S., AND NO SCALE FACTOR WAS APPLIED
- D. REFER TO AECOM FIELD BOOK NO. 4999

CONSTRUCTION NOTES

1. PLANE EXISTING ASPHALT PAVEMENT
2. PLACE NEW ASPHALT PAVEMENT OVERLAY TYPE 1A (100mm AVG. THICKNESS)
3. REMOVE EXISTING CONCRETE PAVEMENT AND INSTALL NEW 150mm REINFORCED CONCRETE PAVEMENT c/w 100mm ASPHALTIC OVERLAY
4. PARTIAL DEPTH PLANING OF EXISTING JOINTS AND ASPHALT PATCHING OF EXISTING JOINTS USING TYPE 1A
5. RENEW EXISTING CONCRETE BARRIER CURB (150mm REVEAL HT. DOWELLED)
6. RENEW EXISTING CONCRETE BARRIER CURB (150mm REVEAL HT. SEPARATE)
7. REMOVE EXISTING CURB AND INSTALL CONCRETE MODIFIED BARRIER CURB (180mm REVEAL HT. DOWELLED)
8. INSTALL NEW CONCRETE MODIFIED BARRIER CURB (180mm REVEAL HT. INTEGRAL)
9. INSTALL NEW CONCRETE CURB RAMP (10mm HT. INTEGRAL)
10. INSTALL NEW CONCRETE CURB RAMP (10mm HT. MONOLITHIC)
11. RENEW EXISTING 100mm CONCRETE SIDEWALK
12. CONSTRUCT NEW 100mm CONCRETE SIDEWALK
13. REMOVE EXISTING CATCHPIT / CATCHBASIN
14. INSTALL NEW CATCHBASIN (SD-024) c/w CURB AND GUTTER INLET FRAME AND COVER (AP-008/AP-009) AND CONNECT TO EXISTING 1800 CONCRETE LIDS
15. ADJUST MANHOLE / CATCHBASIN TO GRADE
16. INSTALL NEW CAST IRON RISER RING
17. ADJUST VALVE TO GRADE
18. INSTALL DETECTABLE SURFACE WARNING TILE



METRIC
WHOLE NUMBERS INDICATE MILLIMETRES
DECIMALIZED NUMBERS INDICATE METRES

150 mm W.M.	WATERMAIN	150 mm W.M.	HYDRO	— x —	PROFILE
300mm L.D.S.	LAND DRAINAGE SEWER	300mm L.D.S.	M.T.S.	— □ —	NORTH GUTTER
250mm W.W.S.	WASTEWATER SEWER	250mm W.W.S.	CONCRETE	— ○ —	SOUTH GUTTER
○	MANHOLE	●	ASPHALT	— ◇ —	N/W PROPERTY LINE
□	CATCH BASIN	■	PROPERTY LINE	— ○ —	S/E PROPERTY LINE
▽	CATCH PIT	⊕	SURVEY BAR		
+	JUNCTIONS	⊕	ELEVATION		
—	CULVERT	⊕	TREE		
—	GAS	⊕	SIDEWALK RAMP		
—	EXISTING	—	CONCRETE SIDEWALK		
—	LEGEND - PLAN	—	FENCE		
—	PROPOSED	—	EXISTING		
—	LEGEND - PLAN	—	LEGEND - PROFILE		
—	PROPOSED	—	PROPOSED		

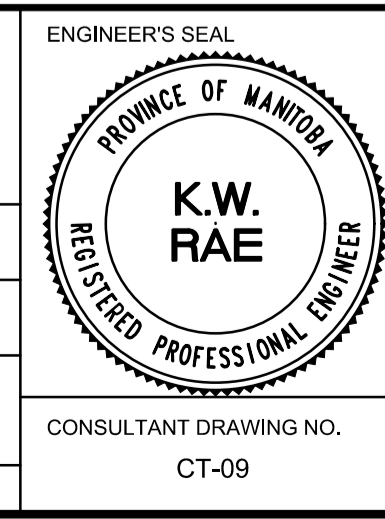
LOCATION APPROVED
UNDERGROUND STRUCTURES

SUPV. U/G STRUCTURES COMMITTEE DATE

NOTE:
LOCATION OF UNDERGROUND STRUCTURES AS SHOWN ARE BASED ON THE BEST INFORMATION AVAILABLE, BUT NO GUARANTEE IS GIVEN THAT ALL EXISTING UTILITIES ARE SHOWN OR THAT THE GIVEN LOCATIONS ARE EXACT. CONFIRMATION OF EXISTENCE AND EXACT LOCATION OF ALL SERVICES MUST BE OBTAINED FROM THE INDIVIDUAL UTILITIES BEFORE PROCEEDING WITH CONSTRUCTION.

B.M. 40-025	S.E. Cor. Ness Ave. & Muriel St., Tdlt. in most Nty. Conc. foundation of Ness Junior High School, 2.5 m ELEV. 236.544		
A	S.F. W. & 0.1 m below brick of N.E. Cor. of school.		
NO.	REVISIONS	DATE	BY

AECOM		DESIGNED BY	JC	CHECKED BY	BC/KWR
		DRAWN BY	JC	APPROVED BY	
		HOR. SCALE:	1:250	RELEASED FOR CONSTRUCTION BY:	
		VERTICAL:	1:10	DATE	



THE CITY OF WINNIPEG
PUBLIC WORKS DEPARTMENT
ENGINEERING DIVISION

2018 RESIDENTIAL STREET RENEWAL PROGRAM

NESS AVENUE - CAVALIER DRIVE TO MURIEL STREET
CONCRETE PAVEMENT REHABILITATION
STATION 0+180 TO STATION 0+280

CITY DRAWING NUMBER
SHEET 09 OF 29