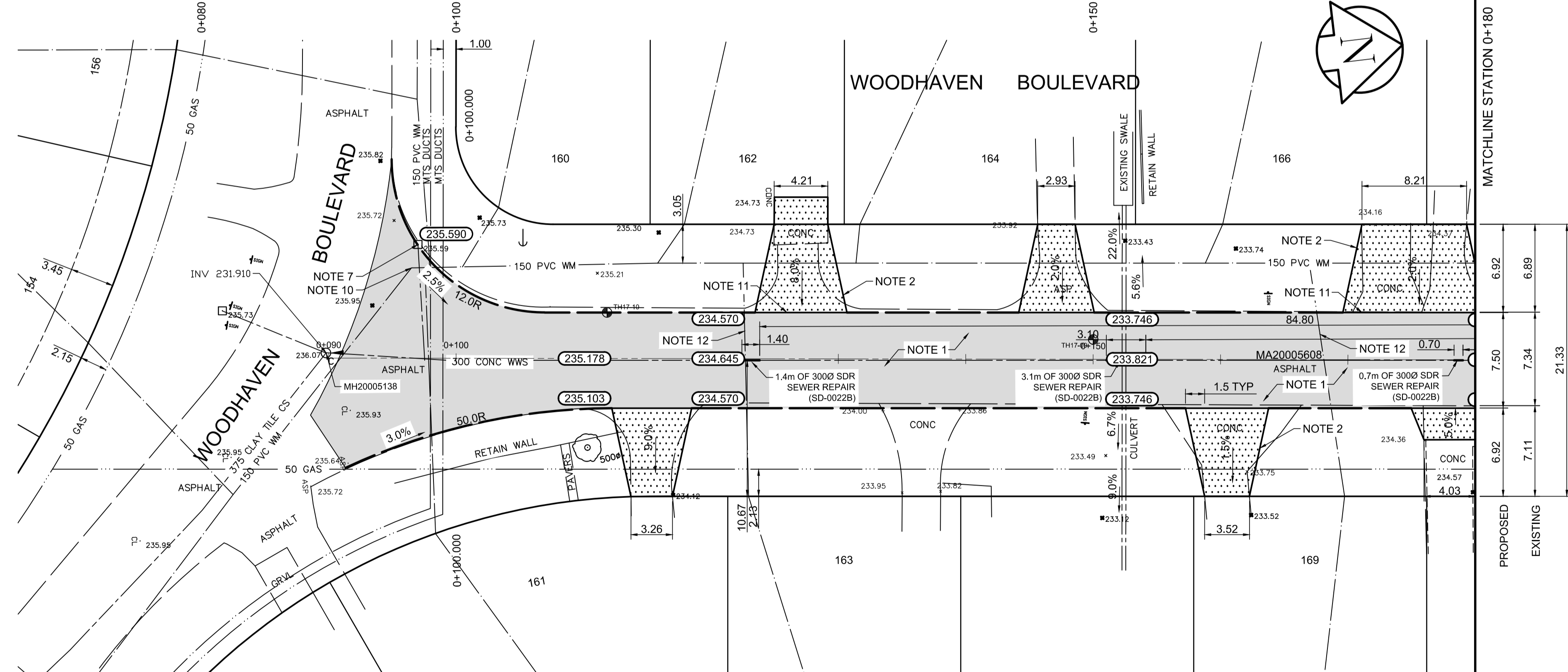


- REFERENCE NOTES**
- PAVEMENT DIMENSIONS ARE TO BACK OF CURB
 - BASELINE IS CENTRE LINE RIGHT-OF-WAY
 - PROPERTY LINES OBTAINED FROM CITY OF WINNIPEG L.B.I.S., AND NO SCALE FACTOR WAS APPLIED
 - REFER TO AECOM FIELD BOOK NO. 4999

- CONSTRUCTION NOTES**
- REMOVE EXISTING ASPHALT PAVEMENT AND CONSTRUCT NEW 100mm ASPHALT PAVEMENT TYPE 1A
 - REMOVE EXISTING CONCRETE / ASPHALT / GRAVEL DRIVEWAY AND CONSTRUCT NEW 150mm REINFORCED CONCRETE PAVEMENT
 - GRADE EXISTING GROUND AND PLACE 100mm NEW ASPHALT PAVEMENT TYPE 1A
 - CONSTRUCT NEW CONCRETE LIP CURB AND GUTTER (600mm WIDTH AND 180mm CURB HT.)
 - CONSTRUCT NEW CONCRETE RAMP CURB AND GUTTER (600mm WIDTH AND 10mm RAMP HT.)
 - REMOVE EXISTING FRAME AND COVER AND INSTALL NEW SOLID FRAME AND COVER
 - ADJUST EXISTING MANHOLE / CATCHBASIN TO GRADE
 - INSTALL NEW CAST IRON RISER RING
 - REMOVE EXISTING MANHOLE / CATCHBASIN
 - ADJUST VALVE TO GRADE
 - CONSTRUCT NEW CONCRETE LIP CURB (40mm HT. MONOLITHIC)
 - INSTALL STYROFOAM WATER SERVICE INSULATION



AECOM
Certificate of Authorization
AECOM Canada Ltd.
No. 4671 Date: _____

METRIC
WHOLE NUMBERS INDICATE MILLIMETRES
DECIMALIZED NUMBERS INDICATE METRES

EXISTING	LEGEND - PLAN	PROPOSED	EXISTING	LEGEND - PLAN	PROPOSED	EXISTING	LEGEND - PROFILE	PROPOSED
150 mm W.M.	WATERMAIN	150 mm W.M.	HYDRO	HYDRO	HYDRO	X	PROFILE	PROFILE
Hydrant	HYDRANT	Hydrant	M.T.S.	M.T.S.	M.T.S.	□	WEST GUTTER	WEST GUTTER
Valve	VALVE	Valve	CONCRETE	CONCRETE	CONCRETE	□	EAST GUTTER	EAST GUTTER
300mm L.D.S.	LAND DRAINAGE SEWER	300mm L.D.S.	ASPHALT	ASPHALT	ASPHALT	○	N/W PROPERTY LINE	N/W PROPERTY LINE
250mm W.W.S.	WASTEWATER SEWER	250mm W.W.S.	PROPERTY LINE	PROPERTY LINE	PROPERTY LINE	○	S/E PROPERTY LINE	S/E PROPERTY LINE
Manhole	MANHOLE	Manhole	SURVEY BAR	SURVEY BAR	SURVEY BAR	+		
Catch Basin	CATCH BASIN	Catch Basin	ELEVATION	ELEVATION	ELEVATION	235.750		
Catch Pit	CATCH PIT	Catch Pit	TREE	TREE	TREE	○		
Junctions	JUNCTIONS	Junctions	SIDEWALK RAMP	SIDEWALK RAMP	SIDEWALK RAMP	▬		
Culvert	CULVERT	Culvert	CONCRETE SIDEWALK	CONCRETE SIDEWALK	CONCRETE SIDEWALK	▬		
Gas	GAS	Gas	FENCE	FENCE	FENCE	▬		

LOCATION APPROVED UNDERGROUND STRUCTURES

SUPV. U/G STRUCTURES COMMITTEE DATE

NOTE:
LOCATION OF UNDERGROUND STRUCTURES AS SHOWN ARE BASED ON THE BEST INFORMATION AVAILABLE, BUT NO GUARANTEE IS GIVEN THAT ALL EXISTING UTILITIES ARE SHOWN OR THAT THE GIVEN LOCATIONS ARE EXACT. CONFIRMATION OF EXISTENCE AND EXACT LOCATION OF ALL SERVICES MUST BE OBTAINED FROM THE INDIVIDUAL UTILITIES BEFORE PROCEEDING WITH CONSTRUCTION.

B.M. 41-049 S. side of Assiniboine Ave. @ Woodhaven Blvd., T.B. on top of 6.05 m dia x 2.4 m iron pipe, 2.5 m E. of C.L. asphalt roadway of Woodhaven Blvd. & 40.9 m S. of S. wall No. 108 Woodhaven Blvd.

NO.	REVISIONS	DATE	BY
0	ISSUED FOR TENDER	04/10/2018	BC
A	ISSUED FOR REVIEW	03/23/2018	BC

AECOM

DESIGNED BY	CHECKED BY
JC	BC/KWR
DRAWN BY	APPROVED BY
JC	

HOR. SCALE: 1:250
VERTICAL: 1:10

RELEASED FOR CONSTRUCTION BY:	DATE

ENGINEER'S SEAL
PROVINCE OF MANITOBA
K.W. RAE
REGISTERED PROFESSIONAL ENGINEER
CONSULTANT DRAWING NO. CT-11

THE CITY OF WINNIPEG
PUBLIC WORKS DEPARTMENT
ENGINEERING DIVISION

2018 RESIDENTIAL STREET RENEWAL PROGRAM

WOODHAVEN BOULEVARD - STATION 0+100 TO PORTAGE AVENUE
ASPHALT PAVEMENT RECONSTRUCTION
STATION 0+100 TO STATION 0+180

CITY DRAWING NUMBER
SHEET 11 OF 29