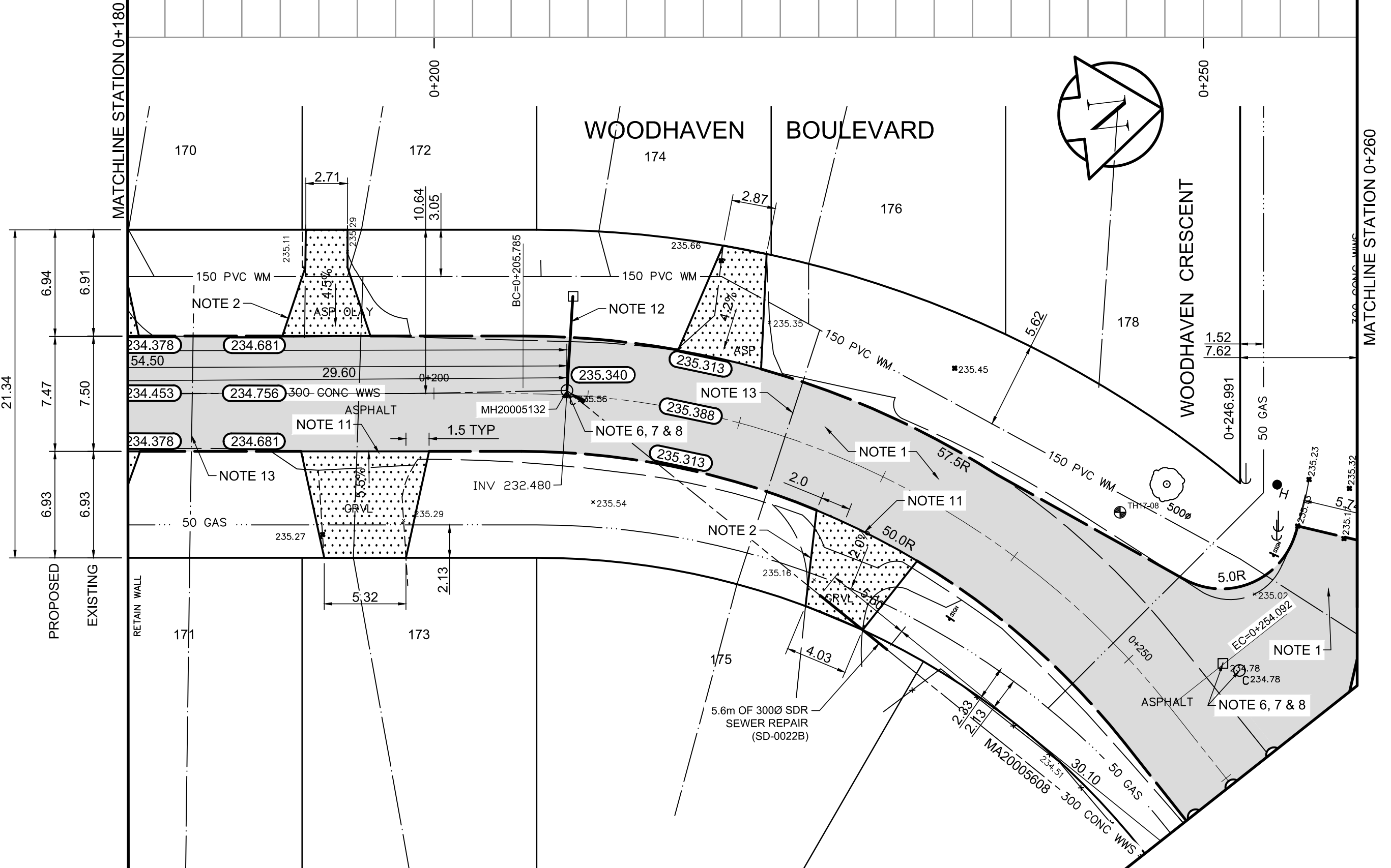


TYPICAL CROSS SECTION



REFERENCE NOTES

- A. PAVEMENT DIMENSIONS ARE TO BACK OF CURB
- B. BASELINE IS CENTRE LINE RIGHT-OF-WAY
- C. PROPERTY LINES OBTAINED FROM CITY OF WINNIPEG L.B.I.S., AND NO SCALE FACTOR WAS APPLIED
- D. REFER TO AECOM FIELD BOOK NO. 4999

CONSTRUCTION NOTES

1. REMOVE EXISTING ASPHALT PAVEMENT AND CONSTRUCT NEW 100mm ASPHALT PAVEMENT TYPE 1A
2. REMOVE EXISTING CONCRETE / ASPHALT / GRAVEL DRIVEWAY AND CONSTRUCT NEW 150mm REINFORCED CONCRETE PAVEMENT
3. GRADE EXISTING GROUND AND PLACE 100mm NEW ASPHALT PAVEMENT TYPE 1A
4. CONSTRUCT NEW CONCRETE LIP CURB AND GUTTER (600mm WIDTH AND 180mm CURB HT.)
5. CONSTRUCT NEW CONCRETE RAMP CURB AND GUTTER (600mm WIDTH AND 10mm RAMP HT.)
6. REMOVE EXISTING FRAME AND COVER AND INSTALL NEW SOLID FRAME AND COVER (AP-004/AP-005)
7. ADJUST EXISTING MANHOLE / CATCHBASIN TO GRADE
8. INSTALL NEW CAST IRON RISER RING
9. REMOVE EXISTING MANHOLE / CATCHBASIN
10. ADJUST VALVE TO GRADE
11. CONSTRUCT NEW CONCRETE LIP CURB (40mm HT. MONOLITHIC)
12. REPLACE 6.1m OF 250 PVC LEAD AND RE-CONNECT TO EXISTING MANHOLE AND CATCHBASIN
13. INSTALL STYROFOAM WATER SERVICE INSULATION



METRIC
WHOLE NUMBERS INDICATE MILLIMETRES
DECIMALIZED NUMBERS INDICATE METRES

| EXISTING | LEGEND - PLAN | PROPOSED | EXISTING | LEGEND - PLAN | PROPOSED | EXISTING | LEGEND - PROFILE | PROPOSED |
|--------------------|---------------------|--------------------|----------|-------------------|----------|----------|-------------------|----------|
| 150 mm W.M. | WATERMAIN | 150 mm W.M. | --- | HYDRO | --- | --- | PROFILE | --- |
| Hydrant symbol | HYDRANT | Hydrant symbol | --- | M.T.S. | --- | --- | WEST GUTTER | --- |
| Valve symbol | VALVE | Valve symbol | --- | CONCRETE | --- | --- | EAST GUTTER | --- |
| 300mm L.D.S. | LAND DRAINAGE SEWER | 300mm L.D.S. | --- | ASPHALT | --- | --- | N/W PROPERTY LINE | --- |
| 250mm W.W.S. | WASTEWATER SEWER | 250mm W.W.S. | --- | PROPERTY LINE | --- | --- | S/E PROPERTY LINE | --- |
| Manhole symbol | MANHOLE | Manhole symbol | --- | SURVEY BAR | --- | --- | | --- |
| Catch basin symbol | CATCH BASIN | Catch basin symbol | --- | ELEVATION | 235.750 | --- | | --- |
| Catch pit symbol | CATCH PIT | Catch pit symbol | --- | TREE | --- | --- | | --- |
| Junction symbol | JUNCTIONS | Junction symbol | --- | SIDEWALK RAMP | --- | --- | | --- |
| Culvert symbol | CULVERT | Culvert symbol | --- | CONCRETE SIDEWALK | --- | --- | | --- |
| Gas symbol | GAS | Gas symbol | --- | FENCE | --- | --- | | --- |

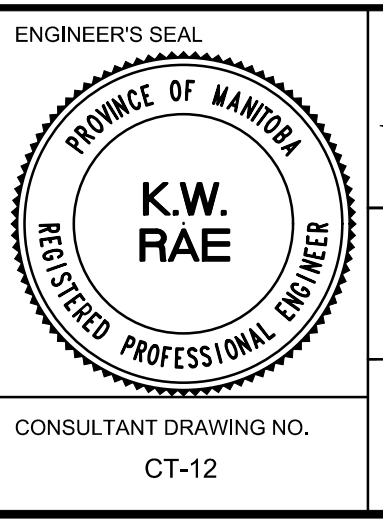
LOCATION APPROVED
UNDERGROUND STRUCTURES

SUPV. U/G STRUCTURES COMMITTEE DATE

NOTE:
LOCATION OF UNDERGROUND STRUCTURES AS SHOWN ARE BASED ON THE BEST INFORMATION AVAILABLE, BUT NO GUARANTEE IS GIVEN THAT ALL EXISTING UTILITIES ARE SHOWN OR THAT THE GIVEN LOCATIONS ARE EXACT. CONFIRMATION OF EXISTENCE AND EXACT LOCATION OF ALL SERVICES MUST BE OBTAINED FROM THE INDIVIDUAL UTILITIES BEFORE PROCEEDING WITH CONSTRUCTION.

| | | | |
|-------------|--|------------|----|
| B.M. 41-049 | S. side of Assiniboine Ave. @ Woodhaven Blvd., T&E, on top of 0.05 m dia x 2.4 m iron pipe, 2.5 m E. of C.L. asphalt roadway of Woodhaven Blvd. & 40.9 m S. of S. wall No. 108 Woodhaven Blvd. | | |
| 0 | ISSUED FOR TENDER | 04/10/2018 | BC |
| A | ISSUED FOR REVIEW | 03/23/2018 | BC |
| NO. | REVISIONS | DATE | BY |

| | | | | | |
|-------------------------------|--|-------------|----|-------------|--------|
| | | DESIGNED BY | JC | CHECKED BY | BC/KWR |
| | | DRAWN BY | JC | APPROVED BY | |
| HOR. SCALE: | | 1:250 | | | |
| VERTICAL: | | 1:10 | | | |
| RELEASED FOR CONSTRUCTION BY: | | | | | |
| DATE | | | | | |



THE CITY OF WINNIPEG
PUBLIC WORKS DEPARTMENT
ENGINEERING DIVISION

2018 RESIDENTIAL STREET RENEWAL PROGRAM

WOODHAVEN BOULEVARD - STATION 0+100 TO PORTAGE AVENUE
ASPHALT PAVEMENT RECONSTRUCTION
STATION 0+180 TO STATION 0+260

CITY DRAWING NUMBER
SHEET 12 OF 29

CONSULTANT DRAWING NO. CT-12