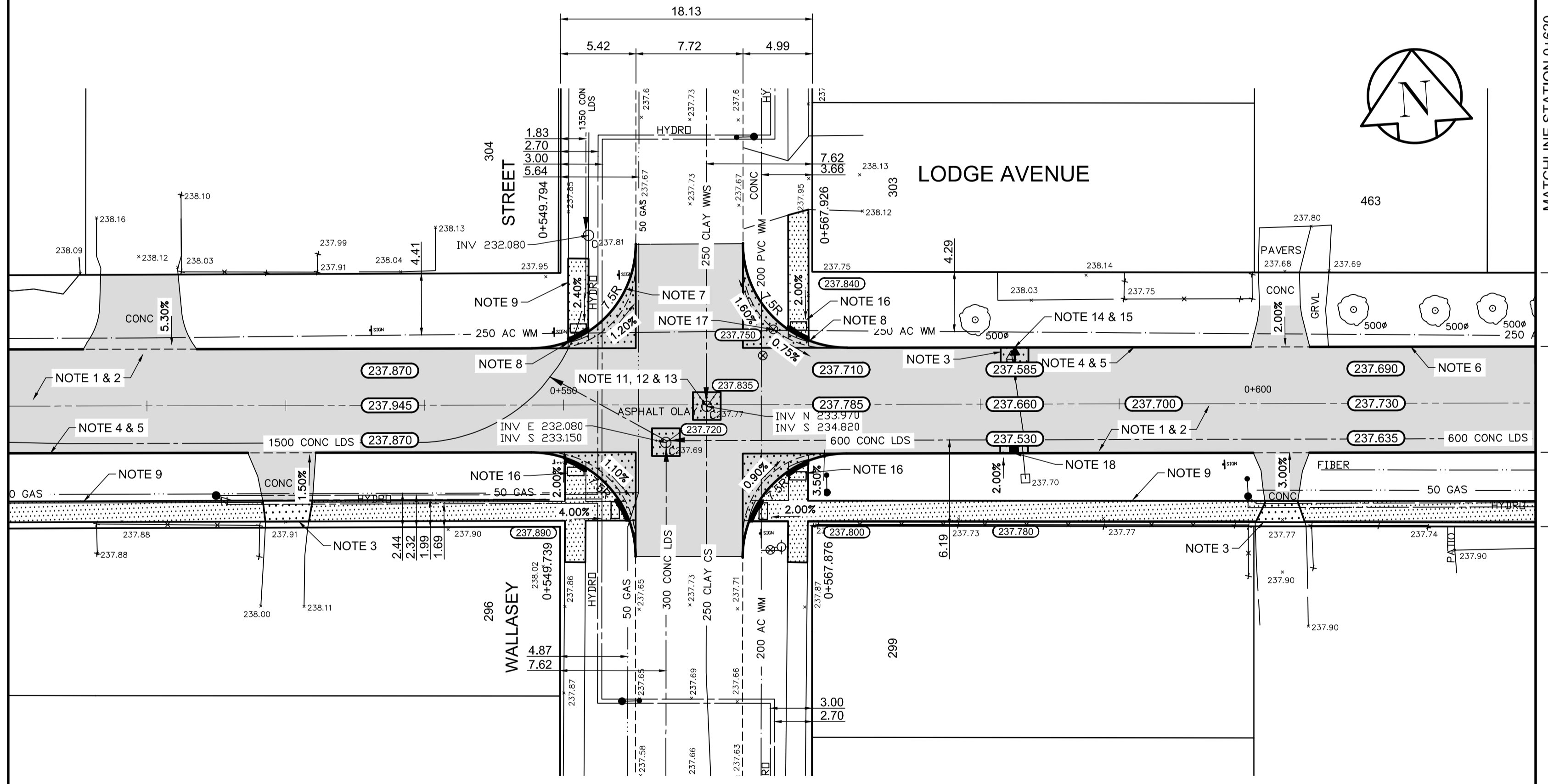


238.500
238.000
237.500
237.000

238.500
238.000
237.500
237.000

MATCHLINE STATION 0+510

MATCHLINE STATION 0+620



- REFERENCE NOTES**
- PAVEMENT DIMENSIONS ARE TO BACK OF CURB
 - BASELINE IS CENTRE LINE ROADWAY
 - PROPERTY LINES OBTAINED FROM CITY OF WINNIPEG L.B.I.S., AND NO SCALE FACTOR WAS APPLIED
 - REFER TO AECOM FIELD BOOK NO. 4997

- CONSTRUCTION NOTES**
- PLANE EXISTING ASPHALT PAVEMENT
 - CONSTRUCT NEW ASPHALT PAVEMENT OVERLAY TYPE 1A (85mm AVG. THICKNESS)
 - REMOVE EXISTING CONCRETE AND CONSTRUCT NEW 150mm REINFORCED CONCRETE PAVEMENT c/w 85mm ASPHALTIC OVERLAY
 - PLANE EXISTING MOUNTABLE CURB
 - INSTALL NEW CONCRETE BARRIER CURB (100mm REVEAL HT. DOWELLED)
 - INSTALL NEW CONCRETE BARRIER CURB (100mm REVEAL HT. SEPARATE)
 - INSTALL NEW CONCRETE MODIFIED BARRIER CURB (180mm REVEAL HT. INTEGRAL)
 - INSTALL NEW CONCRETE CURB RAMP (10mm HT. INTEGRAL)
 - RENEW EXISTING 100mm CONCRETE SIDEWALK
 - REMOVE, REINSTALL AND RE-GRADE PAVING STONES OR PATIO BLOCKS
 - REMOVE EXISTING FRAME AND COVER AND INSTALL NEW SOLID FRAME AND COVER (AP-006/AP-007)
 - ADJUST FRAME TO GRADE
 - INSTALL NEW CAST IRON RISER RING
 - REMOVE EXISTING CATCHPIT
 - INSTALL NEW CATCHPIT (SD-023) c/w CURB AND GUTTER INLET FRAME AND COVER (AP-011/AP-012) AND CONNECT TO EXISTING LEAD
 - INSTALL DETECTABLE SURFACE WARNING TILE
 - ADJUST VALVE TO GRADE
 - INSTALL NEW CATCHBASIN (SD-024) c/w CURB AND GUTTER INLET FRAME AND COVER (AP-011/AP-012) AND CONNECT TO 600 CONC LDS



METRIC
WHOLE NUMBERS INDICATE MILLIMETRES
DECIMALIZED NUMBERS INDICATE METRES

EXISTING	LEGEND - PLAN	PROPOSED	EXISTING	LEGEND - PLAN	PROPOSED	EXISTING	LEGEND - PROFILE	PROPOSED
150 mm W.M.	WATERMAIN	150 mm W.M.	HYDRO	M.T.S.	— X —	— X —	PROFILE	— X —
300mm L.D.S.	LAND DRAINAGE SEWER	300mm L.D.S.	CONCRETE	CONCRETE	—	—	NORTH GUTTER	—
250mm W.W.S.	WASTEWATER SEWER	250mm W.W.S.	ASPHALT	ASPHALT	—	—	SOUTH GUTTER	—
○	MANHOLE	●	PROPERTY LINE	PROPERTY LINE	—	—	N/W PROPERTY LINE	—
□	CATCH BASIN	■	SURVEY BAR	SURVEY BAR	—	—	S/E PROPERTY LINE	—
▽	CATCH PIT	▽	ELEVATION	ELEVATION	235.750	235.750		
+	JUNCTIONS	+	TREE	TREE	—	—		
—	CULVERT	—	SIDEWALK RAMP	SIDEWALK RAMP	—	—		
—	GAS	—	CONCRETE SIDEWALK	CONCRETE SIDEWALK	—	—		
—		—	FENCE	FENCE	—	—		

LOCATION APPROVED
UNDERGROUND STRUCTURES

SUPV. U/G STRUCTURES COMMITTEE DATE

NOTE:
LOCATION OF UNDERGROUND STRUCTURES AS SHOWN ARE BASED ON THE BEST INFORMATION AVAILABLE, BUT NO GUARANTEE IS GIVEN THAT ALL EXISTING UTILITIES ARE SHOWN OR THAT THE GIVEN LOCATIONS ARE EXACT. CONFIRMATION OF EXISTENCE AND EXACT LOCATION OF ALL SERVICES MUST BE OBTAINED FROM THE INDIVIDUAL UTILITIES BEFORE PROCEEDING WITH CONSTRUCTION.

B.M. 39-069 N.W. Cor. Thompson Dr. @ Lodge Ave. Aluminum T&L on top of 0.05 m dia. x 1.22 m iron pipe 2.2 m S. of N.L. Lodge Ave. & 0.30 m W. of W.L. Thompson Dr.

NO.	REVISIONS	DATE	BY
0	ISSUED FOR TENDER	04/10/2018	BC
A	ISSUED FOR REVIEW	03/23/2018	BC

AECOM

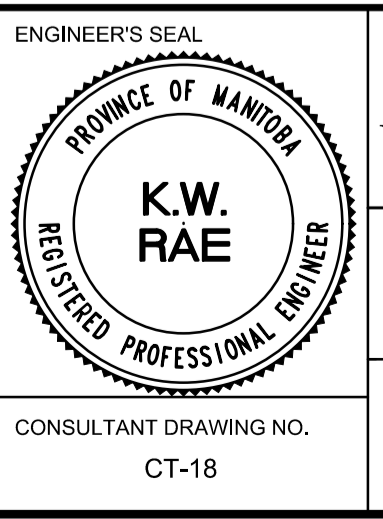
DESIGNED BY: JC
CHECKED BY: BC/KWR

DRAWN BY: JC
APPROVED BY:

HOR. SCALE: 1:250
VERTICAL: 1:10

RELEASED FOR CONSTRUCTION BY:

DATE



THE CITY OF WINNIPEG
PUBLIC WORKS DEPARTMENT
ENGINEERING DIVISION

2018 RESIDENTIAL STREET RENEWAL PROGRAM

LODGE AVENUE - RONALD STREET TO MORAY STREET
CONCRETE PAVEMENT REHABILITATION
STATION 0+510 TO STATION 0+620

CITY DRAWING NUMBER
SHEET 18 OF 29