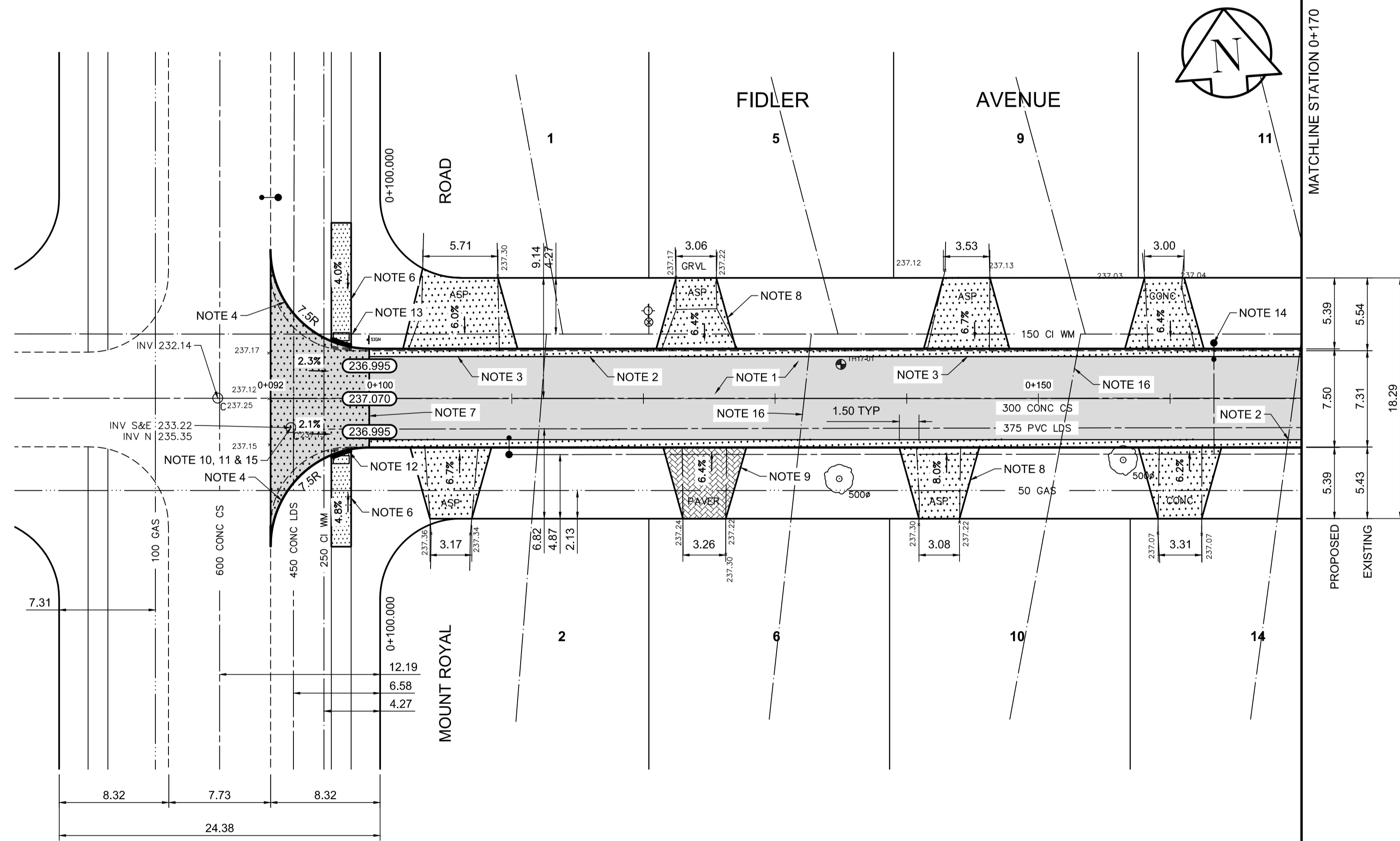


TYPICAL CROSS SECTION



REFERENCE NOTES

- A. PAVEMENT DIMENSIONS ARE TO BACK OF CURB
- B. BASELINE IS CENTRE LINE RIGHT-OF-WAY
- C. PROPERTY LINES OBTAINED FROM CITY OF WINNIPEG L.B.I.S., AND NO SCALE FACTOR WAS APPLIED
- D. REFER TO AECOM FIELD BOOK NO. 4997

CONSTRUCTION NOTES

1. REMOVE EXISTING CONCRETE / ASPHALT PAVEMENT AND CONSTRUCT NEW ASPHALTIC PAVEMENT (100mm THICKNESS TYPE 1A)
2. CONSTRUCT NEW CONCRETE BARRIER CURB AND GUTTER (180mm HT & 600mm WIDTH)
3. CONSTRUCT NEW CONCRETE LIP CURB AND GUTTER (40mm HT, & 600mm WIDTH)
4. CONSTRUCT NEW CONCRETE MODIFIED BARRIER CURB (150mm REVEAL HT. INTEGRAL)
5. CONSTRUCT NEW CONCRETE RAMP CURB (8-12mm HT. INTEGRAL)
6. RENEW EXISTING 100mm CONCRETE SIDEWALK
7. CONSTRUCT NEW 200mm REINFORCED CONCRETE PAVEMENT c/w ASPHALT OVERLAY (50mm, TYPE 1A)
8. REMOVE EXISTING CONCRETE / ASPHALT AND CONSTRUCT NEW 150mm REINFORCED CONCRETE PAVEMENT
9. INSTALL AND REGRADE EXISTING PAVING STONES AS NECESSARY
10. ADJUST MANHOLE / CATCHBASIN TO GRADE
11. INSTALL NEW CAST IRON RISER RING
12. CONSTRUCT CURB RAMP (10mm REVEAL HT. INTEGRAL)
13. INSTALL NEW DETECTABLE WARNING SURFACE TILES
14. REMOVE EXISTING STREET LIGHTS
15. REMOVE EXISTING FRAME AND COVER AND INSTALL NEW SOLID FRAME AND COVER (AP-006/AP-007)
16. INSTALL STYROFOAM WATER SERVICE INSULATION

**AECM**  
 Certificate of Authorization  
 AECOM Canada Ltd.  
 No. 4671 Date: \_\_\_\_\_

**METRIC**  
 WHOLE NUMBERS INDICATE MILLIMETRES  
 DECIMALIZED NUMBERS INDICATE METRES

EXISTING	LEGEND - PLAN	PROPOSED	EXISTING	LEGEND - PLAN	PROPOSED	EXISTING	LEGEND - PROFILE	PROPOSED
150 mm W.M.	WATERMAIN	150 mm W.M.	HYDRO	HYDRO	HYDRO	— X —	PROFILE	— X —
Hydrant symbol	HYDRANT	Hydrant symbol	M.T.S.	M.T.S.	M.T.S.	— □ —	LEFT GUTTER	— □ —
Valve symbol	VALVE	Valve symbol	CONCRETE	CONCRETE	CONCRETE	— ○ —	RIGHT GUTTER	— ○ —
300mm L.D.S.	LAND DRAINAGE SEWER	300mm L.D.S.	ASPHALT	ASPHALT	ASPHALT	— ◇ —	N/W PROPERTY LINE	— ◇ —
250mm W.W.S.	WASTEWATER SEWER	250mm W.W.S.	PROPERTY LINE	PROPERTY LINE	PROPERTY LINE	— ○ —	S/E PROPERTY LINE	— ○ —
Manhole symbol	MANHOLE	Manhole symbol	SURVEY BAR	SURVEY BAR	SURVEY BAR	— ⊕ —	ELEVATION	— ⊕ —
Catch basin symbol	CATCH BASIN	Catch basin symbol	ELEVATION	ELEVATION	ELEVATION	— ⊕ —	(235.750)	— ⊕ —
Catch pit symbol	CATCH PIT	Catch pit symbol	TREE	TREE	TREE	— ⊕ —	5000	— ⊕ —
Junction symbol	JUNCTIONS	Junction symbol	SIDEWALK RAMP	SIDEWALK RAMP	SIDEWALK RAMP	— ▬ —	CONCRETE SIDEWALK	— ▬ —
Culvert symbol	CULVERT	Culvert symbol	FENCE	FENCE	FENCE	— ▬ —	FENCE	— ▬ —
Gas symbol	GAS	Gas symbol						

**LOCATION APPROVED UNDERGROUND STRUCTURES**  
 SUPV. U/G STRUCTURES COMMITTEE DATE \_\_\_\_\_  
 NOTE:  
 LOCATION OF UNDERGROUND STRUCTURES AS SHOWN ARE BASED ON THE BEST INFORMATION AVAILABLE, BUT NO GUARANTEE IS GIVEN THAT ALL EXISTING UTILITIES ARE SHOWN OR THAT THE GIVEN LOCATIONS ARE EXACT. CONFIRMATION OF EXISTENCE AND EXACT LOCATION OF ALL SERVICES MUST BE OBTAINED FROM THE INDIVIDUAL UTILITIES BEFORE PROCEEDING WITH CONSTRUCTION.

B.M. 39-061 N.E. Cor. Mount Royal Rd. & Bruce Ave. T.B. on top of 0.25 m dia. x 2.2 m dia. pipe, 6.5 m ELEV. 236.440 W. of E.L. of Mount Royal Rd. produced from the N. & 2.1 m S. of N.L. of Bruce Ave. produced from the E.

NO.	REVISIONS	DATE	BY
0	ISSUED FOR TENDER	04/10/2018	BC
A	ISSUED FOR REVIEW	03/23/2018	BC

**AECOM**

DESIGNED BY	JC	CHECKED BY	BC/KWR
DRAWN BY	JC	APPROVED BY	
HOR. SCALE:	1:250	RELEASED FOR CONSTRUCTION BY:	
VERTICAL:	1:10	DATE	

ENGINEER'S SEAL  
**K.W. RAE**  
 REGISTERED PROFESSIONAL ENGINEER  
 CONSULTANT DRAWING NO. CT-20

**THE CITY OF WINNIPEG**  
 PUBLIC WORKS DEPARTMENT  
 ENGINEERING DIVISION

2018 RESIDENTIAL STREET RENEWAL PROGRAM

FIDLER AVENUE - MOUNT ROYAL ROAD TO MOUNT ROYAL ROAD  
 ASPHALT PAVEMENT RECONSTRUCTION  
 MOUNT ROYAL ROAD TO STATION 0+170

CITY DRAWING NUMBER SHEET 20 OF 29