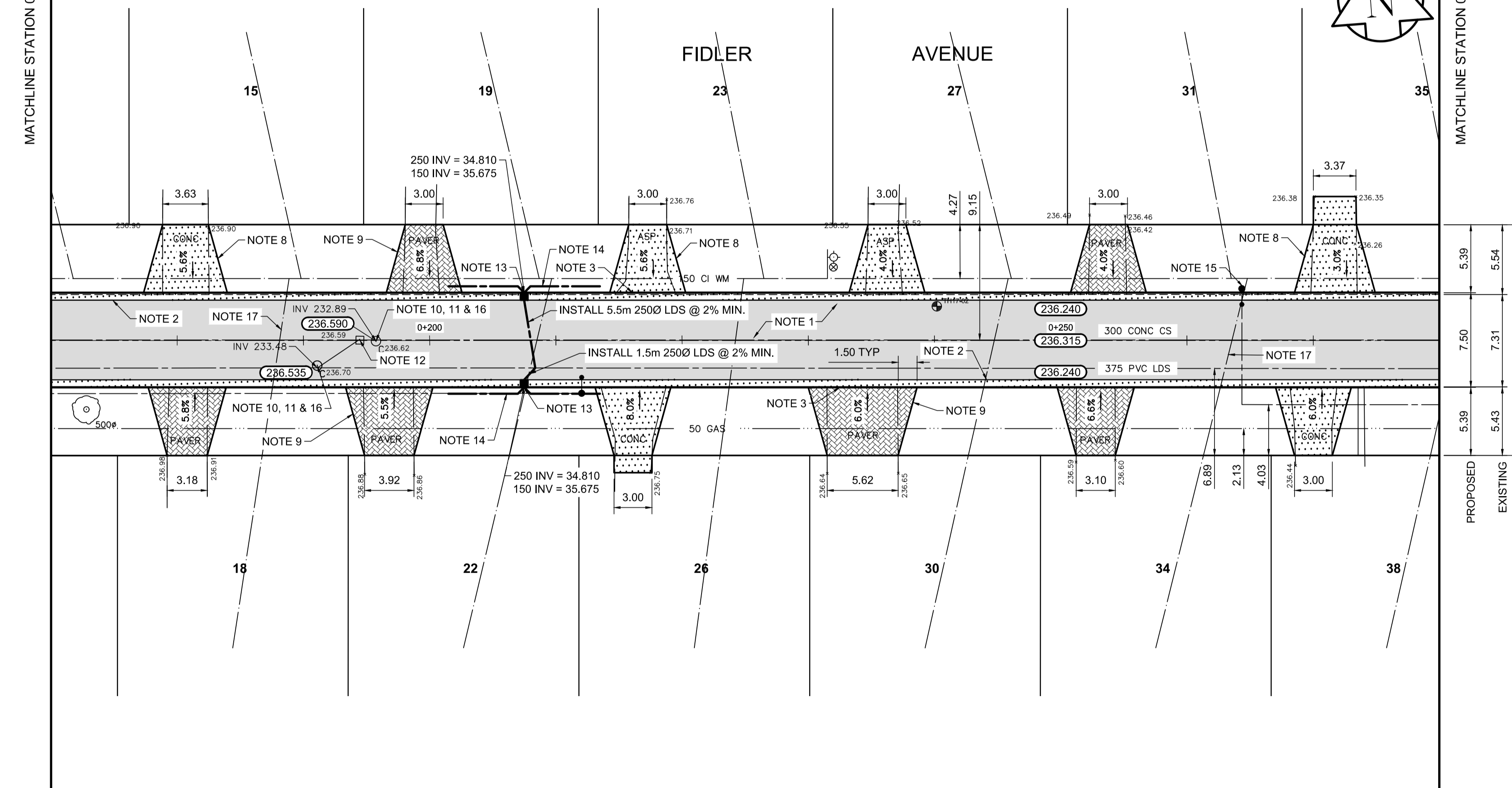
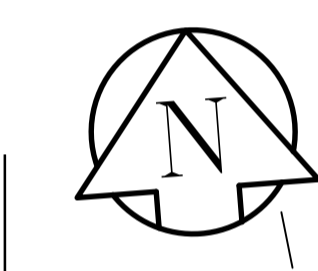


TYPICAL CROSS SECTION

MATCHLINE STATION 0+170

MATCHLINE STATION 0+280



- REFERENCE NOTES**
- A. PAVEMENT DIMENSIONS ARE TO BACK OF CURB
 - B. BASELINE IS CENTRE LINE RIGHT-OF-WAY
 - C. PROPERTY LINES OBTAINED FROM CITY OF WINNIPEG L.B.I.S., AND NO SCALE FACTOR WAS APPLIED
 - D. REFER TO AECOM FIELD BOOK NO. 4997

- CONSTRUCTION NOTES**
1. REMOVE EXISTING CONCRETE / ASPHALT PAVEMENT AND CONSTRUCT NEW ASPHALTIC PAVEMENT (100mm THICKNESS TYPE 1A)
 2. CONSTRUCT NEW CONCRETE BARRIER CURB AND GUTTER (180mm HT & 600mm WIDTH)
 3. CONSTRUCT NEW CONCRETE LIP CURB AND GUTTER (40mm HT. & 600mm WIDTH)
 4. INSTALL NEW CONCRETE MODIFIED BARRIER CURB (150mm REVEAL HT. INTEGRAL)
 5. INSTALL NEW CONCRETE RAMP CURB (8-12mm HT. INTEGRAL)
 6. RENEW EXISTING 100mm CONCRETE SIDEWALK
 7. CONSTRUCT NEW 150mm REINFORCED CONCRETE PAVEMENT c/w ASPHALT OVERLAY (50mm, TYPE 1A)
 8. REMOVE EXISTING CONCRETE / ASPHALT AND CONSTRUCT NEW 150mm REINFORCED CONCRETE PAVEMENT
 9. INSTALL AND REGRADE EXISTING PAVING STONES AS NECESSARY
 10. ADJUST MANHOLE / CATCHBASIN TO GRADE
 11. INSTALL NEW CAST IRON RISER RING
 12. REMOVE EXISTING CATCHBASIN AND ABANDON LEAD
 13. INSTALL NEW CATCHBASIN (SD-024) c/w BARRIER CURB AND GUTTER INLET FRAME AND COVER (AP-011/AP-012) AND CONNECT TO EXISTING 375 PVC LDS
 14. INSTALL 150mm SUBDRAIN 6.0m ON EACH SIDE OF CATCHBASIN
 15. REMOVE EXISTING STREET LIGHTS
 16. REMOVE EXISTING FRAME AND COVER AND INSTALL NEW SOLID FRAME AND COVER (AP-006/AP-007)
 17. INSTALL STYROFOAM WATER SERVICE INSULATION

AECM
 Certificate of Authorization
 AECOM Canada Ltd.
 No. 4671 Date: _____

METRIC
 WHOLE NUMBERS INDICATE MILLIMETRES
 DECIMALIZED NUMBERS INDICATE METRES

EXISTING	LEGEND - PLAN	PROPOSED	EXISTING	LEGEND - PLAN	PROPOSED	EXISTING	LEGEND - PROFILE	PROPOSED
150 mm W.M.	WATERMAIN	150 mm W.M.	---	HYDRO	---	---	PROFILE	---
Hydrant	HYDRANT	Hydrant	---	M.T.S.	---	---	LEFT GUTTER	---
Valve	VALVE	Valve	---	CONCRETE	---	---	RIGHT GUTTER	---
300mm L.D.S.	LAND DRAINAGE SEWER	300mm L.D.S.	---	ASPHALT	---	---	N/W PROPERTY LINE	---
250mm W.W.S.	WASTEWATER SEWER	250mm W.W.S.	---	PROPERTY LINE	---	---	S/E PROPERTY LINE	---
Manhole	MANHOLE	Manhole	---	SURVEY BAR	---	---		---
Catch Basin	CATCH BASIN	Catch Basin	---	ELEVATION	235.750	---		---
Catch Pit	CATCH PIT	Catch Pit	---	TREE	---	---		---
Junctions	JUNCTIONS	Junctions	---	SIDEWALK RAMP	---	---		---
Culvert	CULVERT	Culvert	---	CONCRETE SIDEWALK	---	---		---
Gas	GAS	Gas	---	FENCE	---	---		---

LOCATION APPROVED UNDERGROUND STRUCTURES

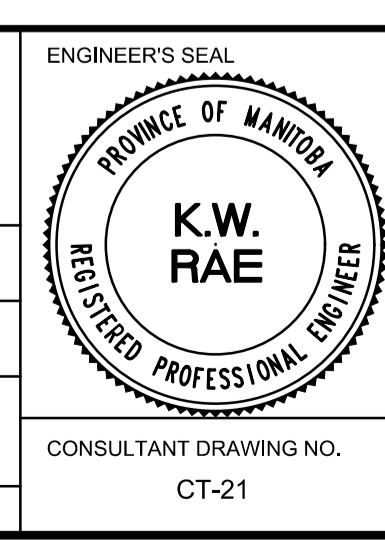
SUPV. U/G STRUCTURES COMMITTEE DATE

NOTE:
 LOCATION OF UNDERGROUND STRUCTURES AS SHOWN ARE BASED ON THE BEST INFORMATION AVAILABLE, BUT NO GUARANTEE IS GIVEN THAT ALL EXISTING UTILITIES ARE SHOWN OR THAT THE GIVEN LOCATIONS ARE EXACT. CONFIRMATION OF EXISTENCE AND EXACT LOCATION OF ALL SERVICES MUST BE OBTAINED FROM THE INDIVIDUAL UTILITIES BEFORE PROCEEDING WITH CONSTRUCTION.

B.M. 39-061	Top of E.L. of Mount Royal Rd. & Bruce Ave.	ELEV. 236.440
A	ISSUED FOR TENDER	04/10/2018 BC
A	ISSUED FOR REVIEW	03/23/2018 BC
NO.	REVISIONS	DATE BY

AECOM

DESIGNED BY	JC	CHECKED BY	BC/KWR
DRAWN BY	JC	APPROVED BY	
HOR. SCALE:	1:250	RELEASED FOR CONSTRUCTION BY:	
VERTICAL:	1:10	DATE	



THE CITY OF WINNIPEG
 PUBLIC WORKS DEPARTMENT
 ENGINEERING DIVISION

2018 RESIDENTIAL STREET RENEWAL PROGRAM

FIDLER AVENUE - MOUNT ROYAL ROAD TO MOUNT ROYAL ROAD
 ASPHALT PAVEMENT RECONSTRUCTION
 STATION 0+170 TO STATION 0+280

CITY DRAWING NUMBER
 SHEET 21 OF 29

CONSULTANT DRAWING NO. CT-21