

- REFERENCE NOTES**
- PAVEMENT DIMENSIONS ARE TO BACK OF CURB
  - BASELINE IS CENTRE LINE RIGHT-OF-WAY
  - PROPERTY LINES OBTAINED FROM CITY OF WINNIPEG L.B.I.S., AND NO SCALE FACTOR WAS APPLIED
  - REFER TO AECOM FIELD BOOK NO. 4997

- CONSTRUCTION NOTES**
- PLANE EXISTING ASPHALT PAVEMENT AND CONSTRUCT NEW ASPHALT PAVEMENT OVERLAY TYPE 1A (90mm AVG. THICKNESS)
  - REMOVE EXISTING CONCRETE PAVEMENT AND CONSTRUCT NEW 150mm REINFORCED CONCRETE PAVEMENT c/w 90mm ASPHALTIC OVERLAY
  - REMOVE EXISTING CONCRETE PAVEMENT AND CONSTRUCT NEW 150mm REINFORCED CONCRETE PAVEMENT
  - REMOVE EXISTING CONCRETE PAVEMENT
  - REMOVE EXISTING BARRIER CURB
  - RENEW EXISTING CONCRETE BARRIER CURB (100mm REVEAL HT. DOWELLED)
  - CONSTRUCT NEW CONCRETE BARRIER CURB (100mm REVEAL HT. SEPARATE)
  - CONSTRUCT NEW CONCRETE MODIFIED BARRIER CURB (150mm REVEAL HT. INTEGRAL)
  - CONSTRUCT NEW CONCRETE MODIFIED BARRIER CURB (150mm REVEAL HT. DOWELLED)
  - CONSTRUCT NEW CONCRETE CURB RAMP (10mm HT. INTEGRAL)
  - CONSTRUCT NEW CONCRETE CURB RAMP (10mm HT. MONOLITHIC)
  - CONSTRUCT NEW CONCRETE LIP CURB (40mm HT. INTEGRAL)
  - RENEW EXISTING 100mm CONCRETE SIDEWALK
  - INSTALL DETECTABLE SURFACE WARNING TILE
  - REMOVE EXISTING FRAME AND COVER AND INSTALL NEW SOLID FRAME AND COVER (AP-006/AP-007)
  - REMOVE EXISTING CURB AND GUTTER INLET FRAME AND COVER AND INSTALL NEW CURB AND GUTTER INLET FRAME AND COVER (AP-011/AP-012)
  - ADJUST EXISTING MANHOLE/CATCHBASIN TO GRADE
  - INSTALL NEW CAST IRON RISER RING
  - RELOCATE EXISTING LIGHT STANDARD

**AECM**  
 Certificate of Authorization  
 AECOM Canada Ltd.  
 No. 4671 Date: \_\_\_\_\_

**METRIC**  
 WHOLE NUMBERS INDICATE MILLIMETRES  
 DECIMALIZED NUMBERS INDICATE METRES

EXISTING	LEGEND - PLAN	PROPOSED	EXISTING	LEGEND - PLAN	PROPOSED	EXISTING	LEGEND - PROFILE	PROPOSED
150 mm W.M.	WATERMAIN	150 mm W.M.	---	HYDRO	---	---	PROFILE	---
Hydrant	HYDRANT	Hydrant	---	M.T.S.	---	---	NORTH GUTTER	---
Valve	VALVE	Valve	---	CONCRETE	---	---	SOUTH GUTTER	---
300mm L.D.S.	LAND DRAINAGE SEWER	300mm L.D.S.	---	ASPHALT	---	---	N/W PROPERTY LINE	---
250mm W.W.S.	WASTEWATER SEWER	250mm W.W.S.	---	PROPERTY LINE	---	---	S/E PROPERTY LINE	---
Manhole	MANHOLE	Manhole	---	SURVEY BAR	---	---		
Catch Basin	CATCH BASIN	Catch Basin	---	ELEVATION	235.750	---		
Catch Pit	CATCH PIT	Catch Pit	---	TREE	---	---		
Junctions	JUNCTIONS	Junctions	---	SIDEWALK RAMP	---	---		
Culvert	CULVERT	Culvert	---	CONCRETE SIDEWALK	---	---		
Gas	GAS	Gas	---	FENCE	---	---		

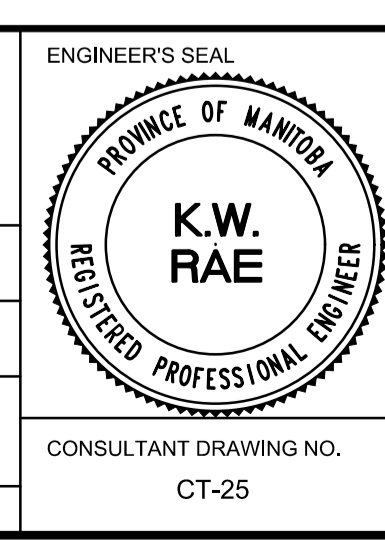
**LOCATION APPROVED**  
 UNDERGROUND STRUCTURES

SUPV. U/G STRUCTURES COMMITTEE DATE

**NOTE:**  
 LOCATION OF UNDERGROUND STRUCTURES AS SHOWN ARE BASED ON THE BEST INFORMATION AVAILABLE, BUT NO GUARANTEE IS GIVEN THAT ALL EXISTING UTILITIES ARE SHOWN OR THAT THE GIVEN LOCATIONS ARE EXACT. CONFIRMATION OF EXISTENCE AND EXACT LOCATION OF ALL SERVICES MUST BE OBTAINED FROM THE INDIVIDUAL UTILITIES BEFORE PROCEEDING WITH CONSTRUCTION.

B.M. 38-039 S.W. Cor. Sharpe Blvd. & Bruce Ave., Tblt. in N. Conc. Foundation No. 336 Sharpe Blvd., 3.3 m W. & ELEV. 236.023 S.X. 0.3 m below stucco of N.E. Cor. of dwelling.

DESIGNED BY	SS	CHECKED BY	BC/KWR
DRAWN BY	JC	APPROVED BY	
HOR. SCALE:	1:250	RELEASED FOR CONSTRUCTION BY:	
VERTICAL:	1:10	DATE	



**THE CITY OF WINNIPEG**  
 PUBLIC WORKS DEPARTMENT  
 ENGINEERING DIVISION

2018 RESIDENTIAL STREET RENEWAL PROGRAM

BRUCE AVENUE - CONWAY STREET TO WOODLAWN STREET  
 CONCRETE PAVEMENT REHABILITATION  
 CONWAY STREET TO STATION 0+180

CITY DRAWING NUMBER  
 SHEET 25 OF 29

CONSULTANT DRAWING NO. CT-25