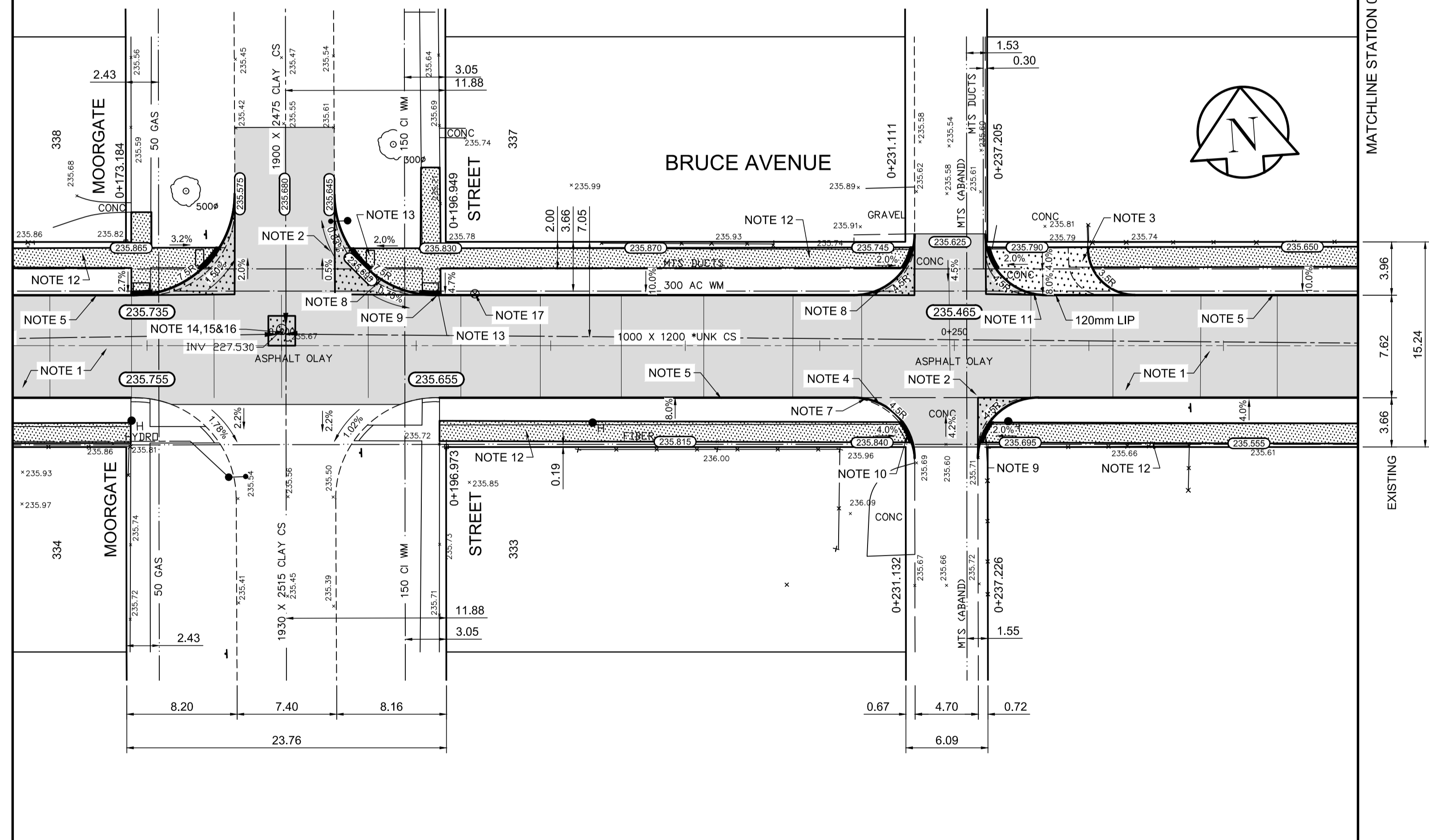


MATCHLINE STATION 0+180

MATCHLINE STATION 0+280



- REFERENCE NOTES**
- PAVEMENT DIMENSIONS ARE TO BACK OF CURB
 - BASELINE IS CENTRE LINE RIGHT-OF-WAY
 - PROPERTY LINES OBTAINED FROM CITY OF WINNIPEG L.B.I.S., AND NO SCALE FACTOR WAS APPLIED
 - REFER TO AECOM FIELD BOOK NO. 4997

- CONSTRUCTION NOTES**
- PLANE EXISTING ASPHALT PAVEMENT AND CONSTRUCT NEW ASPHALT PAVEMENT OVERLAY TYPE 1A (90mm AVG. THICKNESS)
 - REMOVE EXISTING CONCRETE PAVEMENT AND CONSTRUCT NEW 150mm REINFORCED CONCRETE PAVEMENT c/w 90mm ASPHALTIC OVERLAY
 - REMOVE EXISTING CONCRETE PAVEMENT AND CONSTRUCT NEW 150mm REINFORCED CONCRETE PAVEMENT
 - REMOVE EXISTING BARRIER CURB
 - RENEW EXISTING CONCRETE BARRIER CURB (100mm REVEAL HT. DOWELLED)
 - CONSTRUCT NEW CONCRETE BARRIER CURB (100mm REVEAL HT. SEPARATE)
 - CONSTRUCT NEW CONCRETE MODIFIED BARRIER CURB (150mm REVEAL HT. INTEGRAL)
 - CONSTRUCT NEW CONCRETE MODIFIED BARRIER CURB (150mm REVEAL HT. DOWELLED)
 - CONSTRUCT NEW CONCRETE CURB RAMP (10mm HT. INTEGRAL)
 - CONSTRUCT NEW CONCRETE CURB RAMP (10mm HT. MONOLITHIC)
 - CONSTRUCT NEW CONCRETE LIP CURB (40mm HT. INTEGRAL)
 - RENEW EXISTING 100mm CONCRETE SIDEWALK
 - INSTALL DETECTABLE SURFACE WARNING TILE
 - REMOVE EXISTING FRAME AND COVER AND INSTALL NEW SOLID FRAME AND COVER (AP-006/AP-007)
 - ADJUST EXISTING MANHOLE/CATCHBASIN TO GRADE
 - INSTALL NEW CAST IRON RISER RING
 - ADJUST EXISTING WATER VALVE TO GRADE

AECOM
 Certificate of Authorization
 AECOM Canada Ltd.
 No. 4671 Date: _____

METRIC
 WHOLE NUMBERS INDICATE MILLIMETRES
 DECIMALIZED NUMBERS INDICATE METRES

150 mm W.M.	WATERMAIN	150 mm W.M.	HYDRO	— X —	PROFILE
300mm L.D.S.	HYDRANT	300mm L.D.S.	M.T.S.	— □ —	NORTH GUTTER
250mm W.W.S.	VALVE	250mm W.W.S.	CONCRETE	— ○ —	SOUTH GUTTER
	LAND DRAINAGE SEWER		ASPHALT	— ◇ —	N/W PROPERTY LINE
	WASTEWATER SEWER		PROPERTY LINE	— ○ —	S/E PROPERTY LINE
	MANHOLE		SURVEY BAR		
	CATCH BASIN		ELEVATION		
	CATCH PIT		TREE		
	JUNCTIONS		SIDEWALK RAMP		
	CULVERT		CONCRETE SIDEWALK		
	GAS		FENCE		
EXISTING	LEGEND - PLAN	PROPOSED	EXISTING	LEGEND - PLAN	PROPOSED

LOCATION APPROVED UNDERGROUND STRUCTURES

SUPV. U/G STRUCTURES COMMITTEE DATE _____

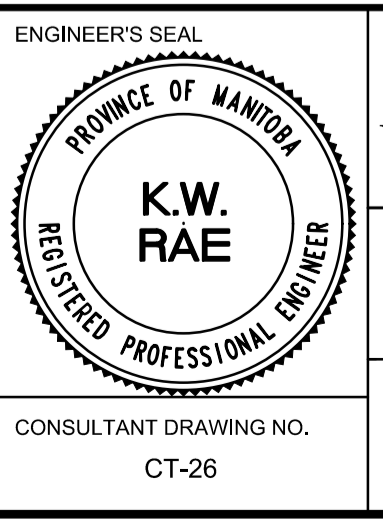
NOTE:
 LOCATION OF UNDERGROUND STRUCTURES AS SHOWN ARE BASED ON THE BEST INFORMATION AVAILABLE, BUT NO GUARANTEE IS GIVEN THAT ALL EXISTING UTILITIES ARE SHOWN OR THAT THE GIVEN LOCATIONS ARE EXACT. CONFIRMATION OF EXISTENCE AND EXACT LOCATION OF ALL SERVICES MUST BE OBTAINED FROM THE INDIVIDUAL UTILITIES BEFORE PROCEEDING WITH CONSTRUCTION.

B.M. 38-039 S.W. Cor. Sharpe Blvd. & Bruce Ave., Tblt. in N. Conc. foundation No. 336 Sharpe Blvd., 3.3 m W. & ELEV. 236.023 S.X. 0.3 m below stucco of N.E. Cor. of dwelling.

0	ISSUED FOR TENDER	04/10/2018	BC
A	ISSUED FOR REVIEW	03/23/2018	BC
NO.	REVISIONS	DATE	BY

AECOM

DESIGNED BY	SS	CHECKED BY	BC/KWR
DRAWN BY	JC	APPROVED BY	
HOR. SCALE:	1:250	RELEASED FOR CONSTRUCTION BY:	
VERTICAL:	1:10	DATE	



THE CITY OF WINNIPEG
 PUBLIC WORKS DEPARTMENT
 ENGINEERING DIVISION

2018 RESIDENTIAL STREET RENEWAL PROGRAM

BRUCE AVENUE - CONWAY STREET TO WOODLAWN STREET
 CONCRETE PAVEMENT REHABILITATION
 STATION 0+180 TO STATION 0+280

CITY DRAWING NUMBER
 SHEET 26 OF 29

CONSULTANT DRAWING NO.
 CT-26