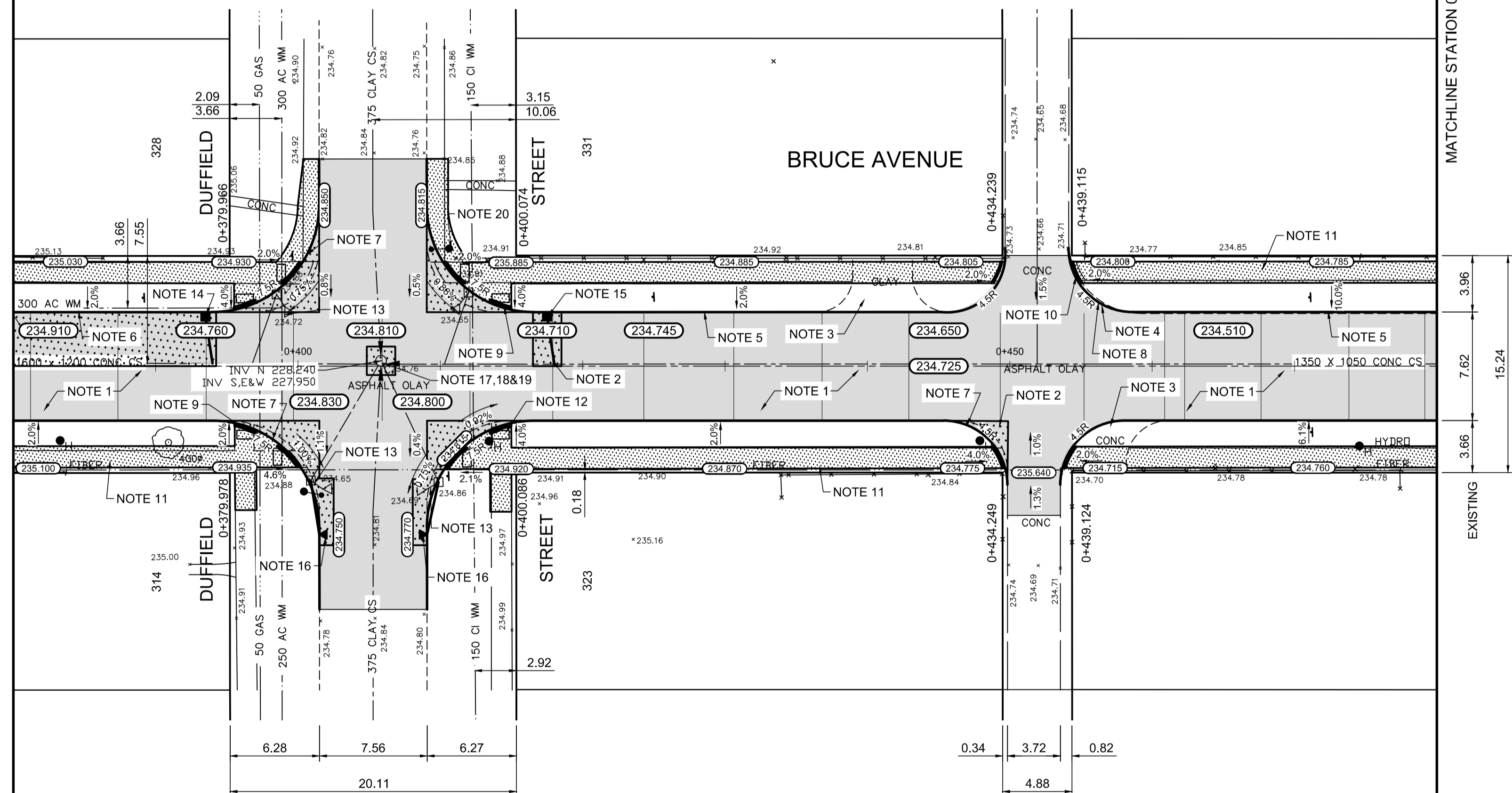


MATCHLINE STATION 0+380

MATCHLINE STATION 0+480

- REFERENCE NOTES**
- PAVEMENT DIMENSIONS ARE TO BACK OF CURB
  - BASILINE IS CENTRE LINE RIGHT-OF-WAY
  - PROPERTY LINES OBTAINED FROM CITY OF WINNIPEG L.B.I.S., AND NO SCALE FACTOR WAS APPLIED
  - REFER TO AECOM FIELD BOOK NO. 4997

- CONSTRUCTION NOTES**
- PLANE EXISTING ASPHALT PAVEMENT AND CONSTRUCT NEW ASPHALT PAVEMENT OVERLAY TYPE 1A (90mm AVG. THICKNESS)
  - REMOVE EXISTING CONCRETE PAVEMENT AND CONSTRUCT NEW 150mm REINFORCED CONCRETE PAVEMENT c/w 90mm ASPHALTIC OVERLAY
  - REMOVE EXISTING CONCRETE PAVEMENT
  - REMOVE EXISTING BARRIER CURB
  - RENEW EXISTING CONCRETE BARRIER CURB (100mm REVEAL HT. DOWELLED)
  - CONSTRUCT NEW CONCRETE BARRIER CURB (100mm REVEAL HT. SEPARATE)
  - CONSTRUCT NEW CONCRETE MODIFIED BARRIER CURB (150mm REVEAL HT. INTEGRAL)
  - CONSTRUCT NEW CONCRETE MODIFIED BARRIER CURB (150mm REVEAL HT. DOWELLED)
  - CONSTRUCT NEW CONCRETE CURB RAMP (10mm HT. INTEGRAL)
  - CONSTRUCT NEW CONCRETE CURB RAMP (10mm HT. MONOLITHIC)
  - RENEW EXISTING 100mm CONCRETE SIDEWALK
  - INSTALL DETECTABLE SURFACE WARNING TILE
  - REMOVE EXISTING CATCHBASIN/CATCHPIT AND ABANDON LEAD
  - INSTALL NEW CATCHBASIN (SD-024) c/w CURB AND GUTTER INLET FRAME AND COVER (AP-011/AP-012) AND CONNECT TO EXISTING 1600x1200 CONCRETE COMBINED SEWER
  - INSTALL NEW CATCHBASIN (SD-024) c/w CURB AND GUTTER INLET FRAME AND COVER (AP-011/AP-012) AND CONNECT TO EXISTING 1350x1050 CONCRETE COMBINED SEWER
  - INSTALL NEW CATCHPIT (SD-023) c/w CURB AND GUTTER INLET FRAME AND COVER AND CONNECT TO EXISTING CATCHBASIN
  - REMOVE EXISTING FRAME AND COVER AND INSTALL NEW SOLID FRAME AND COVER (AP-006/AP-007)
  - ADJUST EXISTING MANHOLE/CATCHBASIN TO GRADE
  - INSTALL NEW CAST IRON RISER RING
  - RELOCATE EXISTING LIGHT STANDARD



**METRIC**  
WHOLE NUMBERS INDICATE MILLIMETRES  
DECIMALIZED NUMBERS INDICATE METRES

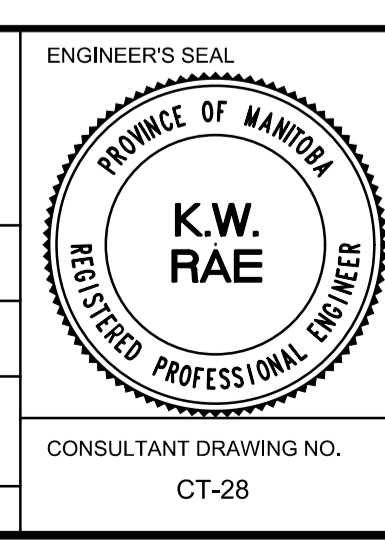
EXISTING	LEGEND - PLAN	PROPOSED	EXISTING	LEGEND - PLAN	PROPOSED	EXISTING	LEGEND - PROFILE	PROPOSED
150 mm W.M.	WATERMAIN	150 mm W.M.	---	HYDRO	---	---	PROFILE	---
300mm L.O.S.	LAND DRAINAGE SEWER	300mm L.O.S.	---	M.T.S.	---	---	NORTH GUTTER	---
250mm W.W.S.	WASTEWATER SEWER	250mm W.W.S.	---	CONCRETE	---	---	SOUTH GUTTER	---
○	MANHOLE	●	---	ASPHALT	---	---	N/W PROPERTY LINE	---
□	CATCH BASIN	■	---	PROPERTY LINE	---	---	S/E PROPERTY LINE	---
▽	CATCH PIT	▼	---	SURVEY BAR	---	---		---
+	JUNCTIONS	+	---	ELEVATION	235.750	---		---
---	CULVERT	---	---	TREE	---	---		---
---	GAS	---	---	SIDEWALK RAMP	---	---		---
---		---	---	CONCRETE SIDEWALK	---	---		---
---		---	---	FENCE	---	---		---

**LOCATION APPROVED**  
UNDERGROUND STRUCTURES

SUPV. U/G STRUCTURES COMMITTEE DATE

**NOTE:**  
LOCATION OF UNDERGROUND STRUCTURES AS SHOWN ARE BASED ON THE BEST INFORMATION AVAILABLE, BUT NO GUARANTEE IS GIVEN THAT ALL EXISTING UTILITIES ARE SHOWN OR THAT THE GIVEN LOCATIONS ARE EXACT. CONFIRMATION OF EXISTENCE AND EXACT LOCATION OF ALL SERVICES MUST BE OBTAINED FROM THE INDIVIDUAL UTILITIES BEFORE PROCEEDING WITH CONSTRUCTION.

B.M. 38-039	S.W. Cor. Sharpe Blvd. & Bruce Ave., Tblt. in N. Conc. foundation No. 336 Sharpe Blvd., 3.3 m W. & ELEV. 236.023	S.X. 0.3 m below stucco of N.E. Cor. of dwelling.	
DESIGNED BY	SS	CHECKED BY	BC/KWR
DRAWN BY	JC	APPROVED BY	
ISSUED FOR TENDER	04/10/2018	BC	
ISSUED FOR REVIEW	03/23/2018	BC	
NO. REVISIONS	DATE	BY	DATE



**THE CITY OF WINNIPEG**  
PUBLIC WORKS DEPARTMENT  
ENGINEERING DIVISION

2018 RESIDENTIAL STREET RENEWAL PROGRAM

BRUCE AVENUE - CONWAY STREET TO WOODLAWN STREET  
CONCRETE PAVEMENT REHABILITATION  
STATION 0+380 TO STATION 0+480

CITY DRAWING NUMBER  
SHEET 28 OF 29

CONSULTANT DRAWING NO. CT-28