

METRIC
 WHOLE NUMBERS INDICATE MILLIMETERS
 DECIMALIZED NUMBERS INDICATE METERS
 BID OPPORTUNITY NO. 2-2018

PRELIMINARY
 NOT TO BE USED FOR CONSTRUCTION

LOCATION APPROVED UNDERGROUND STRUCTURES

SUPR. UG STRUCTURES COMMITTEE DATE

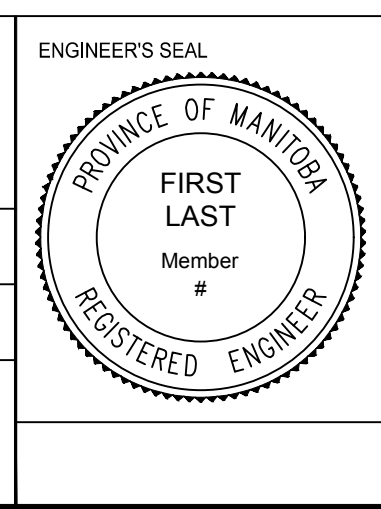
NOTE:
 LOCATION OF UNDERGROUND STRUCTURES AS SHOWN ARE BASED ON THE BEST INFORMATION AVAILABLE. BUT NO GUARANTEE IS GIVEN THAT ALL EXISTING UTILITIES ARE SHOWN OR THAT THE GIVEN LOCATIONS ARE EXACT. CONFIRMATION OF EXISTENCE AND EXACT LOCATION OF ALL SERVICES MUST BE OBTAINED FROM THE INDIVIDUAL UTILITIES BEFORE PROCEEDING WITH CONSTRUCTION.

NO.	REVISIONS	DATE	BY
2.	ISSUED FOR TENDER	08/03/2018	R.W.
1.	SUBMIT FOR PLAN APPROVAL	13/02/2018	R.W.

**ENGINEERING DIVISION
 TECHNOLOGY SERVICES BRANCH
 106 - 1155 PACIFIC AVE**

DESIGNED BY R.W. CHECKED BY A.C.
 DRAWN BY M.S. APPROVED BY

HOR. SCALE: VERTICAL: DATE 13/02/2018



**THE CITY OF WINNIPEG
 PUBLIC WORKS DEPARTMENT**

ROBLIN BOULEVARD EASTBOUND
 FROM ASSINBOINE PARK DRIVE TO SHAFTESBURY BOULEVARD
 CONCRETE RECONSTRUCTION AND ASSOCIATED WORKS

ROBLIN BOULEVARD MULTI-USE PATHWAY
 FROM CHALFONT ROAD TO SHAFTESBURY BOULEVARD
 REHABILITATION AND ASSOCIATED WORKS
 DETAIL DRAWING

CITY DRAWING NUMBER P -3490 - 15
 SHEET 15 OF 30

15