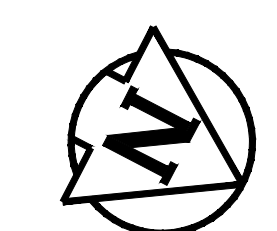
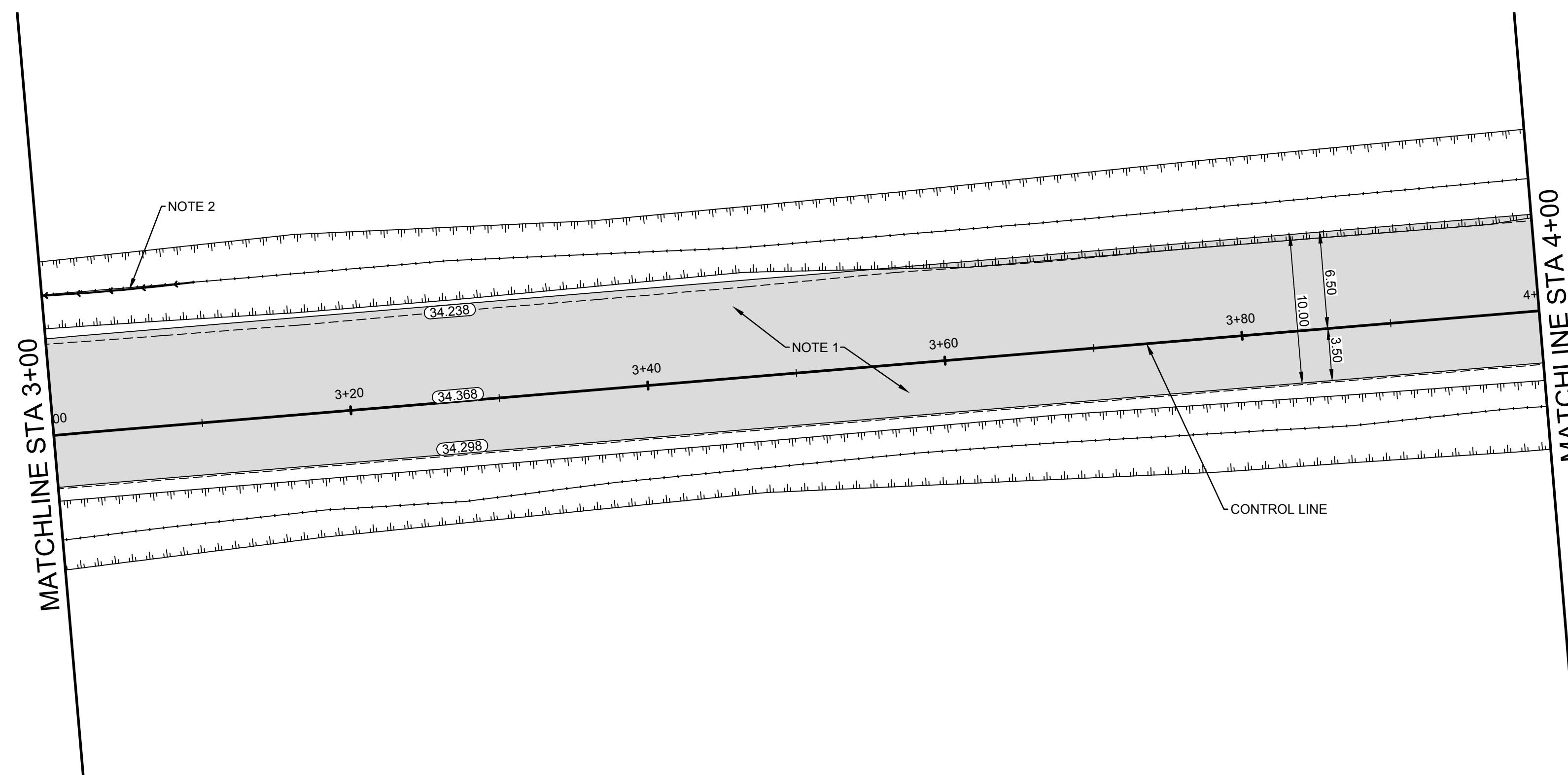


ASSINIBOINE PARK DRIVE



- CONSTRUCTION NOTES**
1. REMOVE EXISTING PAVEMENT AND CONSTRUCT NEW 120mm ASPHALT PAVEMENT
 2. PAVEMENT
 3. RE-GRADE EXISTING DITCH AS REQUIRED

- GENERAL NOTES**
- A. PAVEMENT DIMENSIONS ARE TO BACK OF CURB
 - B. ALL CURB RADII UNDER 15.0m SHALL BE MODIFIED
 - C. ADD 200.000m TO ALL DESIGN ELEVATION TO OBTAIN GEODETIC ELEVATIONS
 - D. CONTRACTOR TO CONFIRM THE LOCATION OF ALL UTILITIES/SERVICES IN THE FIELD PRIOR TO CONSTRUCTION

PRELIMINARY
NOT TO BE USED FOR CONSTRUCTION

METRIC
WHOLE NUMBERS INDICATE MILLIMETERS
DECIMALIZED NUMBERS INDICATE METERS

BID OPPORTUNITY NO. 2-2018

EXISTING	LEGEND - PLAN	PROPOSED	EXISTING	LEGEND - PLAN	PROPOSED	CONCRETE	CONCRETE SIDEWALK	ASPHALT	DITCH FLOW	DITCH - TOP OF SLOPE	CULVERT	LEGEND - PLAN	PROPOSED	LOCATION APPROVED UNDERGROUND STRUCTURES	SUPR. U/G STRUCTURES COMMITTEE DATE	R.M. ELEV.	ENGINEERING DIVISION TECHNOLOGY SERVICES BRANCH 106 - 1155 PACIFIC AVE	ENGINEER'S SEAL	THE CITY OF WINNIPEG PUBLIC WORKS DEPARTMENT	ASSINIBOINE PARK DRIVE FROM ROBLIN BOULEVARD TO COMMISSARY ROAD ASPHALT RECONSTRUCTION AND ASSOCIATED WORKS FROM STA. 3+00 TO STA. 4+00	CITY DRAWING NUMBER P -3490 - 23 SHEET 23 OF 30
⊕	HYDRANT	⊕	---	LDS/WWS	---	▨	▨	▨	▨	▨	▨	▨	▨	---	---	---	---	---	---	---	---
⊙	VALVE	⊙	---	WATERMAIN	---	▨	▨	▨	▨	▨	▨	▨	▨	---	---	---	---	---	---	---	---
⊚	CURB STOP	⊚	---	GAS	---	▨	▨	▨	▨	▨	▨	▨	▨	---	---	---	---	---	---	---	---
○	MANHOLE	○	---	TRAFFIC SIGNALS	---	▨	▨	▨	▨	▨	▨	▨	▨	---	---	---	---	---	---	---	---
□	CATCH BASIN	□	---	HYDRO/STREET LIGHT	---	▨	▨	▨	▨	▨	▨	▨	▨	---	---	---	---	---	---	---	---
△	CURB INLET	△	---	MTS	---	▨	▨	▨	▨	▨	▨	▨	▨	---	---	---	---	---	---	---	---
⊕	HYDRO POLE	⊕	---	EDGE OF PAVEMENT	---	▨	▨	▨	▨	▨	▨	▨	▨	---	---	---	---	---	---	---	---
⊕	LIGHT STANDARD	⊕	---	PROPERTY LINE	---	▨	▨	▨	▨	▨	▨	▨	▨	---	---	---	---	---	---	---	---
⊕	TRAFFIC SIGNAL POLE	⊕	---	RAMP CURB	---	▨	▨	▨	▨	▨	▨	▨	▨	---	---	---	---	---	---	---	---
⊕	SURVEY BAR	⊕	---	ELEVATIONS	---	▨	▨	▨	▨	▨	▨	▨	▨	---	---	---	---	---	---	---	---
⊕	GEODETIC BENCH MARK	⊕	---	TREE	---	▨	▨	▨	▨	▨	▨	▨	▨	---	---	---	---	---	---	---	---
⊕	EXISTING	⊕	---	PROPOSED	---	▨	▨	▨	▨	▨	▨	▨	▨	---	---	---	---	---	---	---	---

DESIGNED BY R.W. CHECKED BY A.M.C.
DRAWN BY M.S. APPROVED BY

HOR. SCALE: 1 : 250
VERTICAL: 1 : 10
DATE 13/02/2018

PROVINCE OF MANITOBA
REGISTERED ENGINEER
FIRST LAST

THE CITY OF WINNIPEG
PUBLIC WORKS DEPARTMENT

ASSINIBOINE PARK DRIVE
FROM ROBLIN BOULEVARD TO COMMISSARY ROAD
ASPHALT RECONSTRUCTION AND ASSOCIATED WORKS
FROM STA. 3+00 TO STA. 4+00

CITY DRAWING NUMBER P -3490 - 23
SHEET 23 OF 30

3