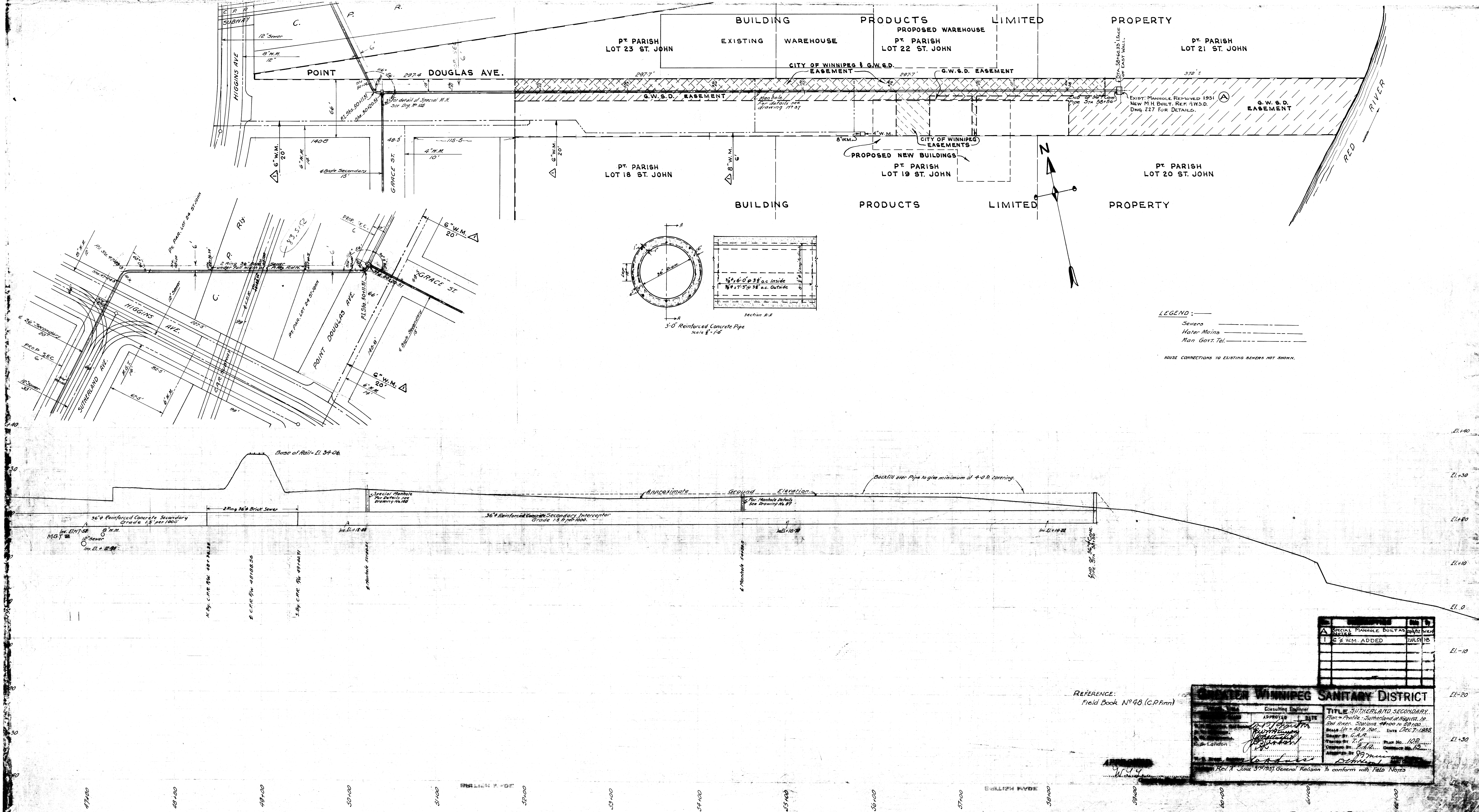


REF. or DRAWING No. **102** file # SS 10022

DETAILS



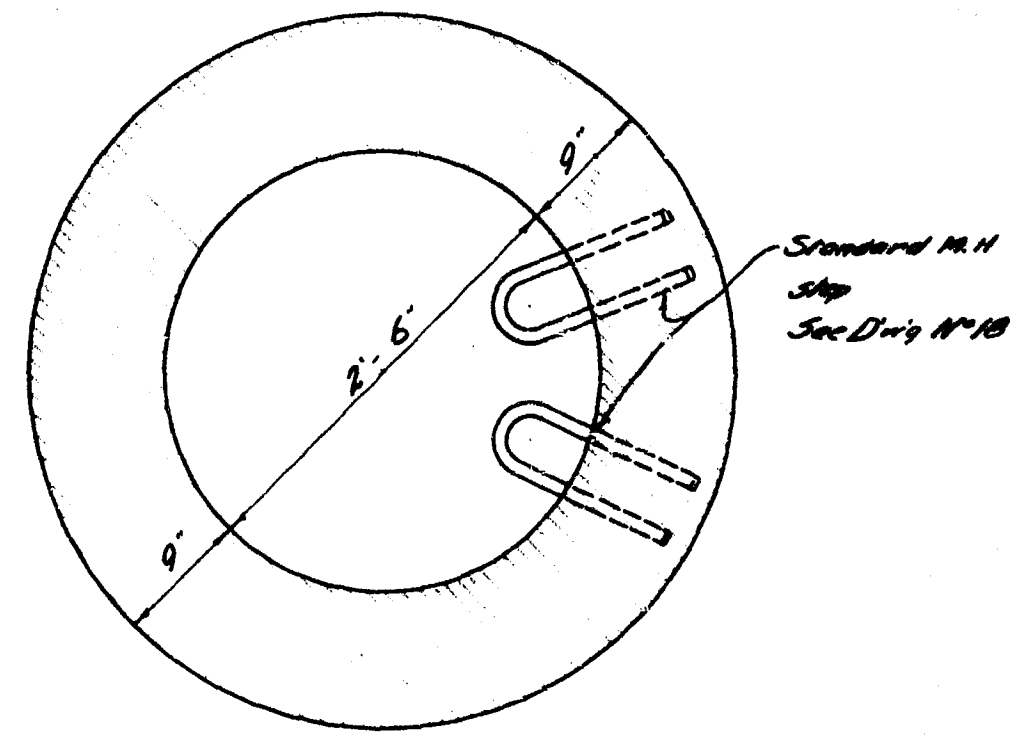
LEGEND:
 Sewers ———
 Water Mains ———
 Man Govt. Tel. ———
 HOUSE CONNECTIONS TO EXISTING SEWERS NOT SHOWN.

REFERENCE:
 Field Book No 46 (C.P.F.m)

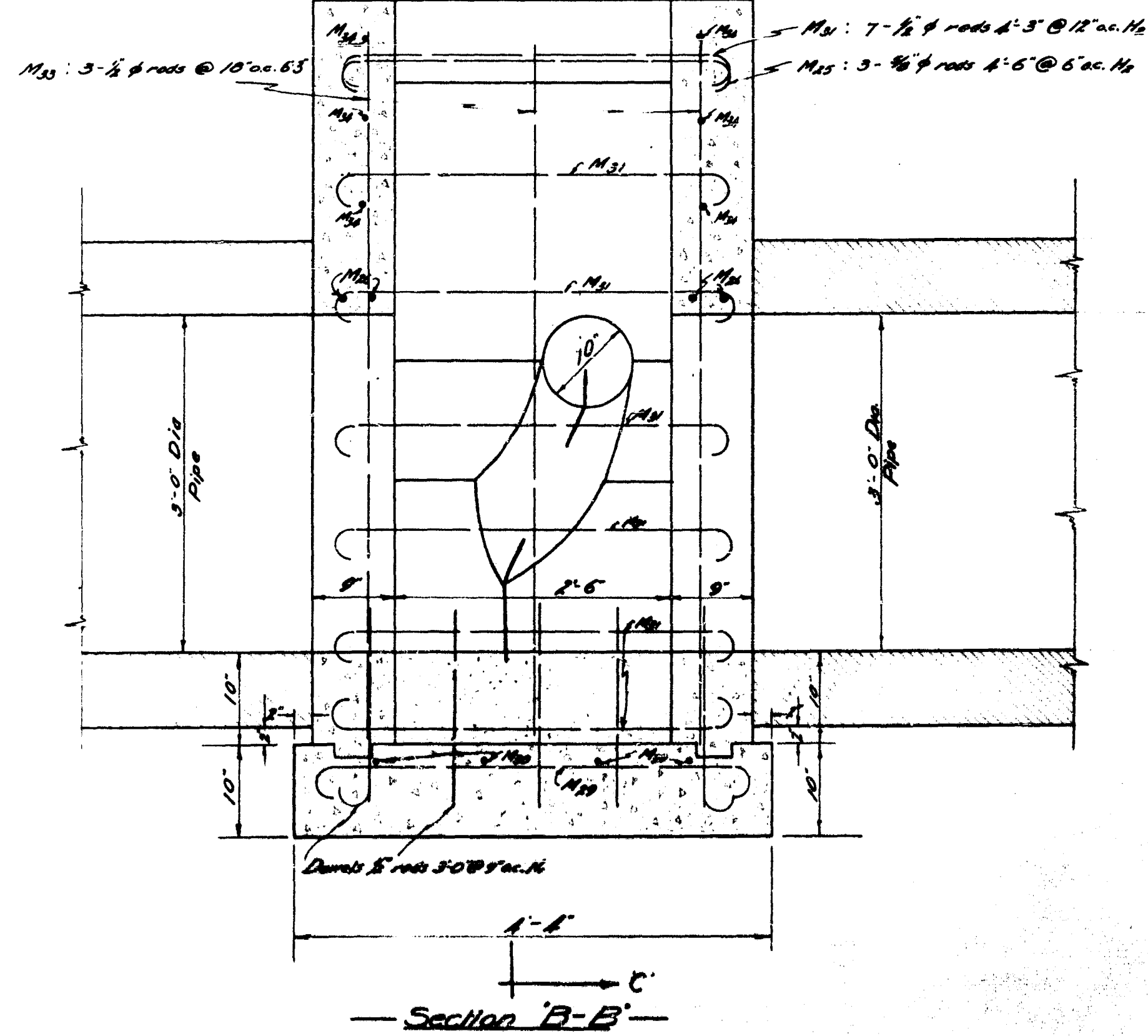
APPROVED	DATE	TITLE
<i>[Signature]</i>		SUTHERLAND SECONDARY
CONSULTING ENGINEER APPROVED DATE <i>[Signature]</i>		TITLE SUTHERLAND SECONDARY Plan Profile - Sutherland at Higgins St Red River. Stations 44+00 to 59+00. SCALE 1" = 40' H. 1" = 4' V. DATE DEC 7, 1933 DRAWN BY G.A.P. PLAN No. 102 CHECKED BY T.G. CONTRACT No. 12 APPROVED BY <i>[Signature]</i>

Rev. A June 3rd 1937 General Revision to conform with Field Notes

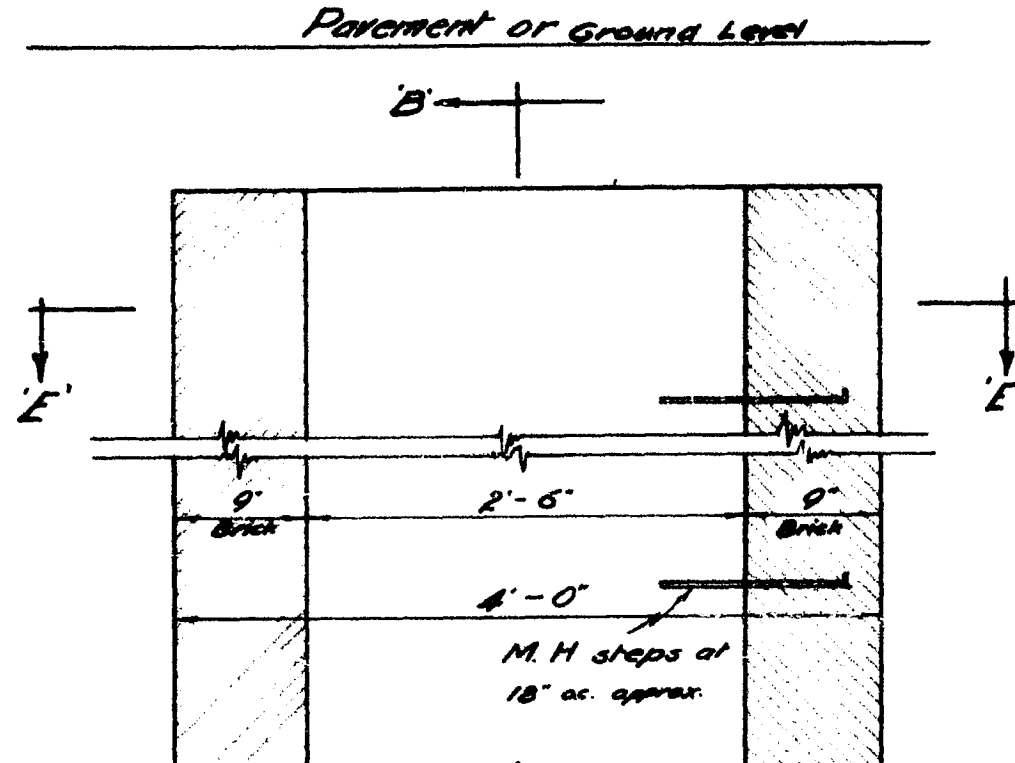
Pavement or Ground Level
 Greater Winnipeg Sanitary District Standard
 manhole cover, frame and mud basket
 See Div'g No 18



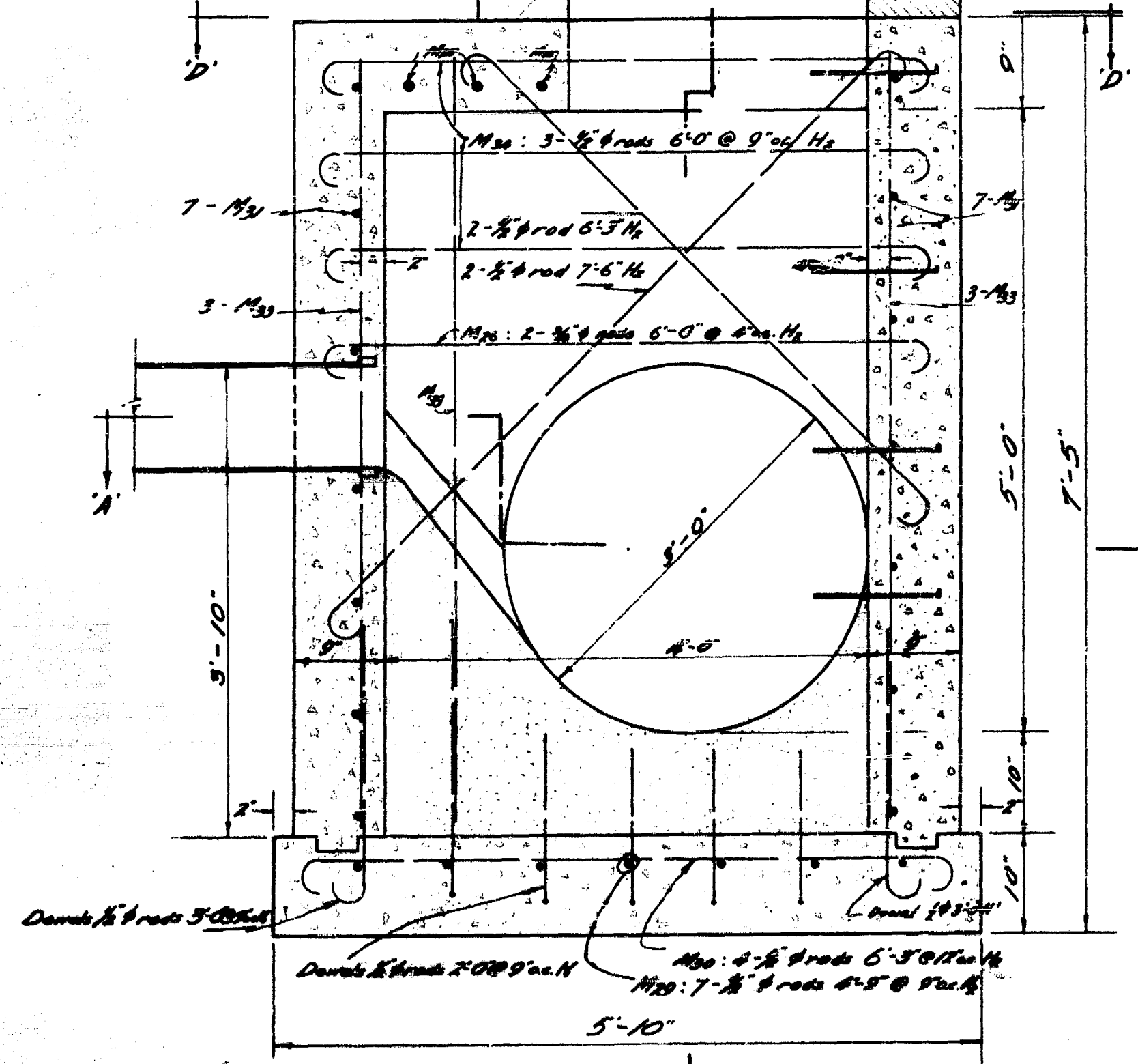
— Section E-E —



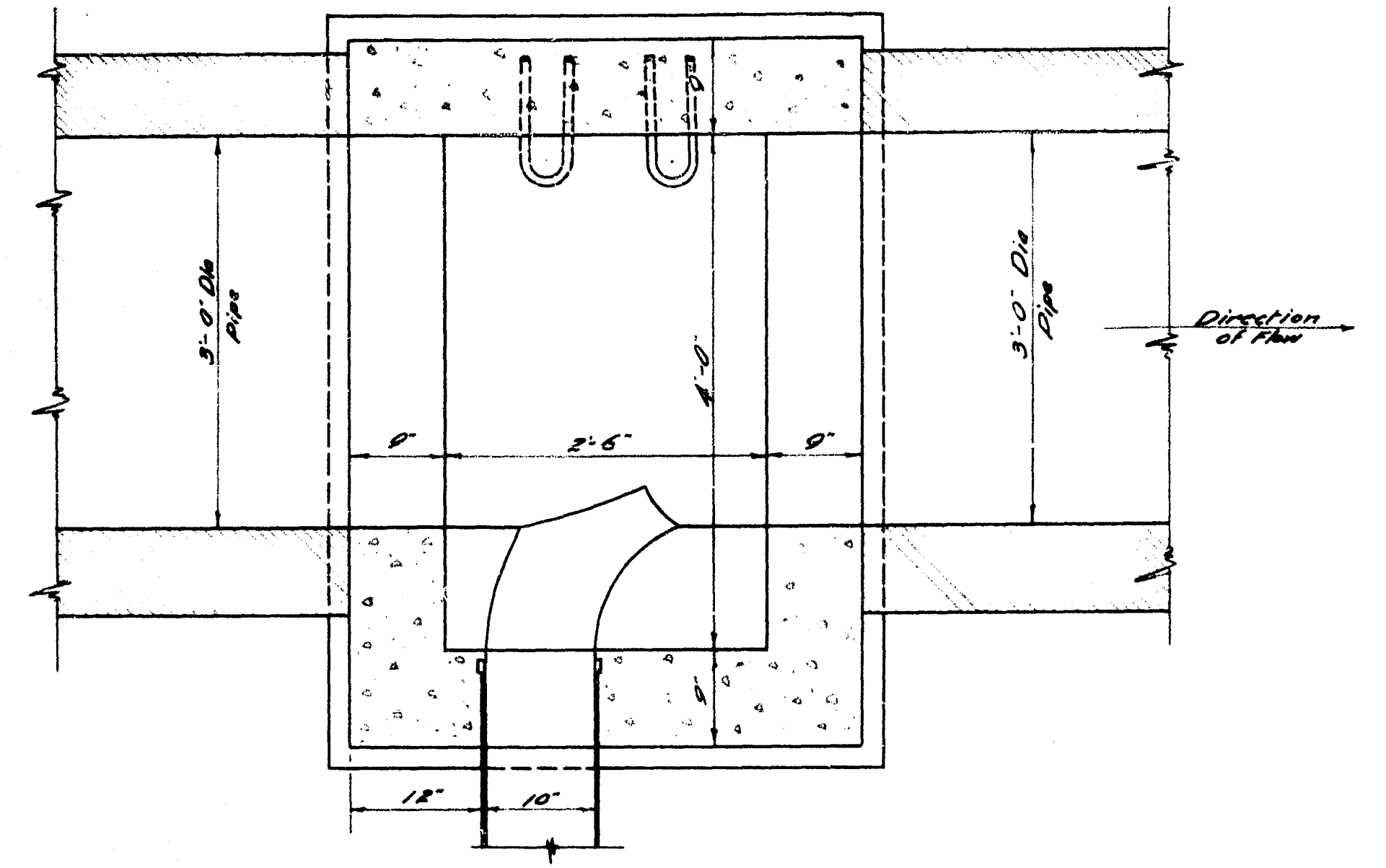
— Section B-B —



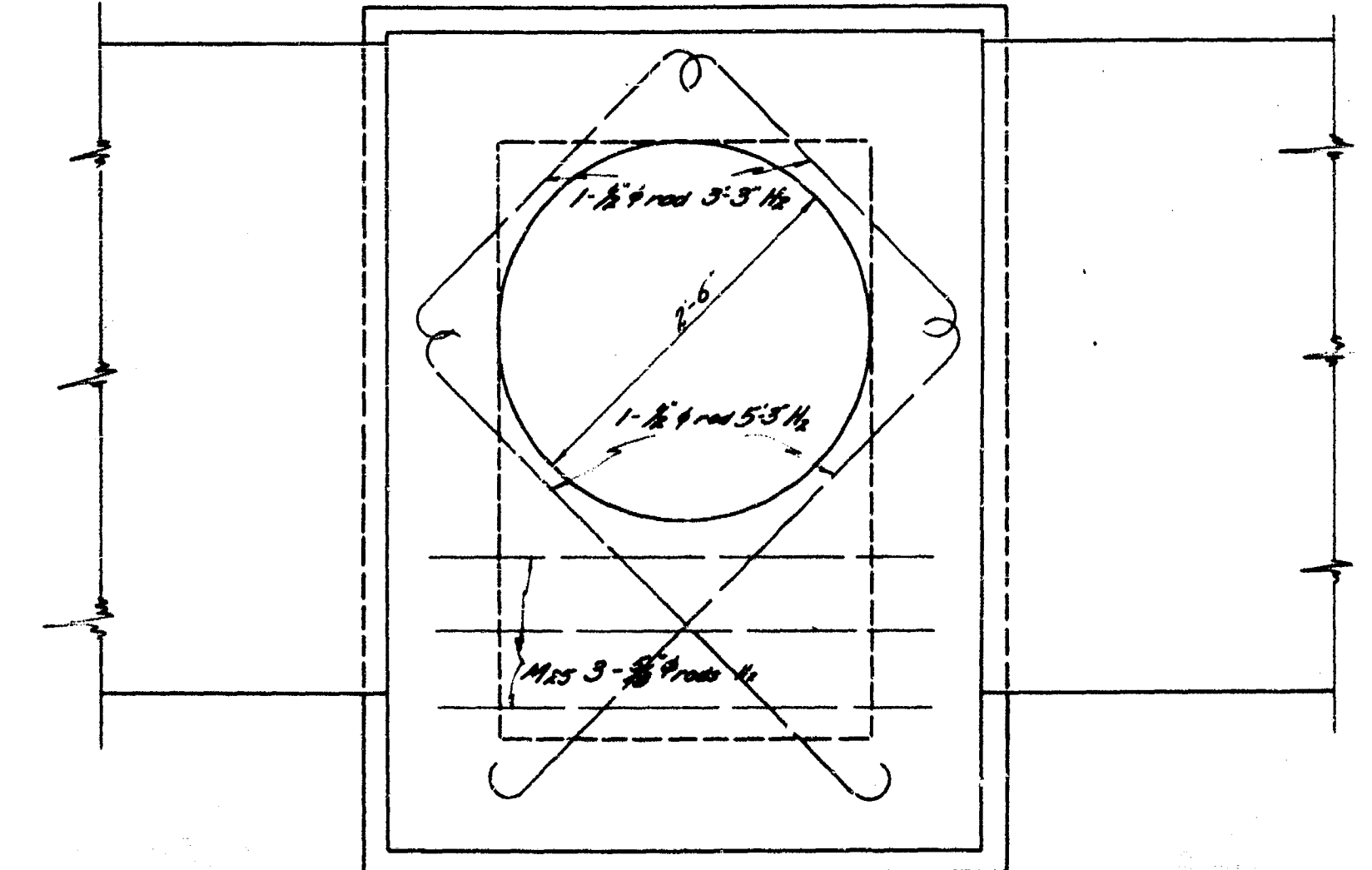
— Section C-C —



— Section C-C —



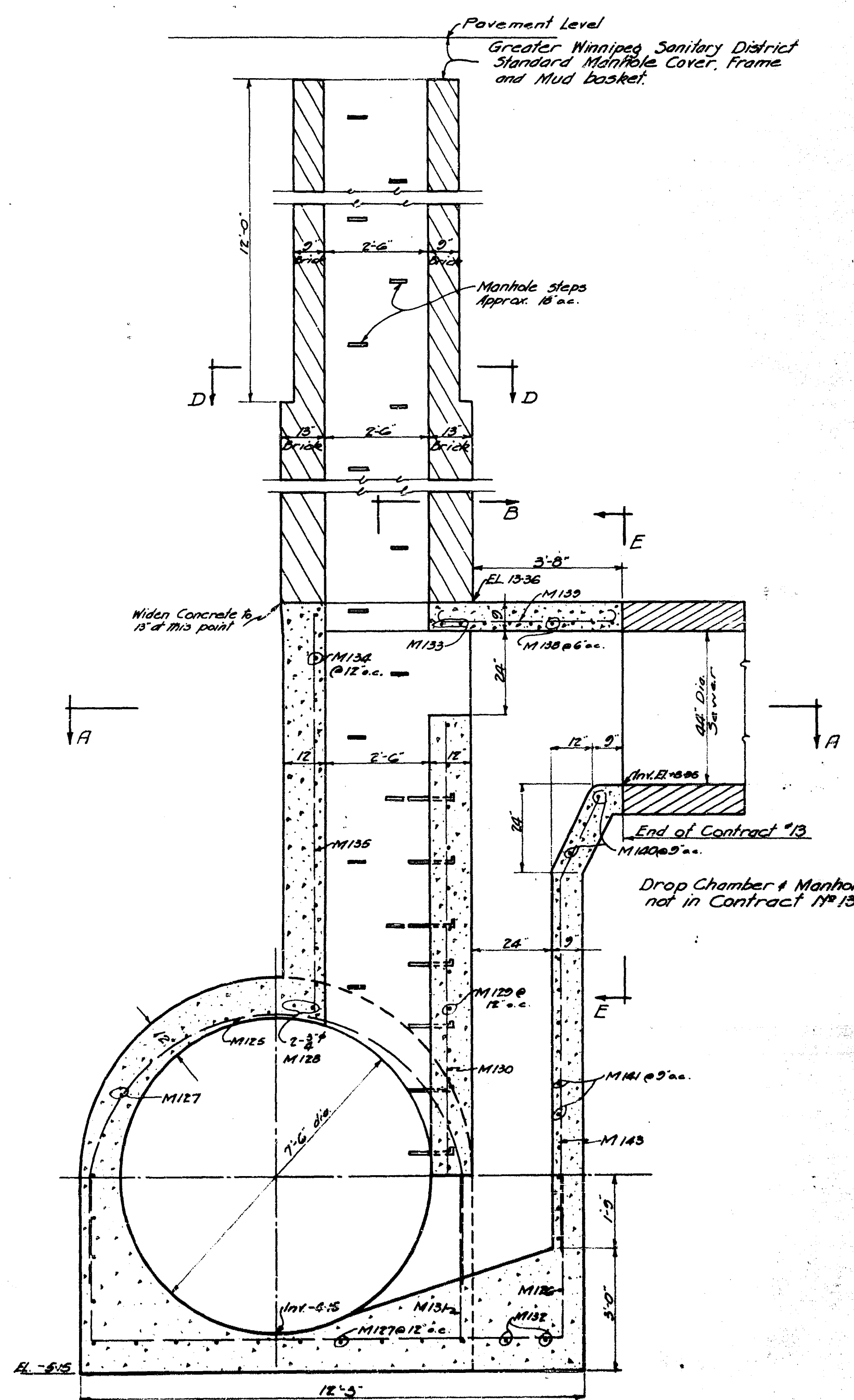
— Section A-A —



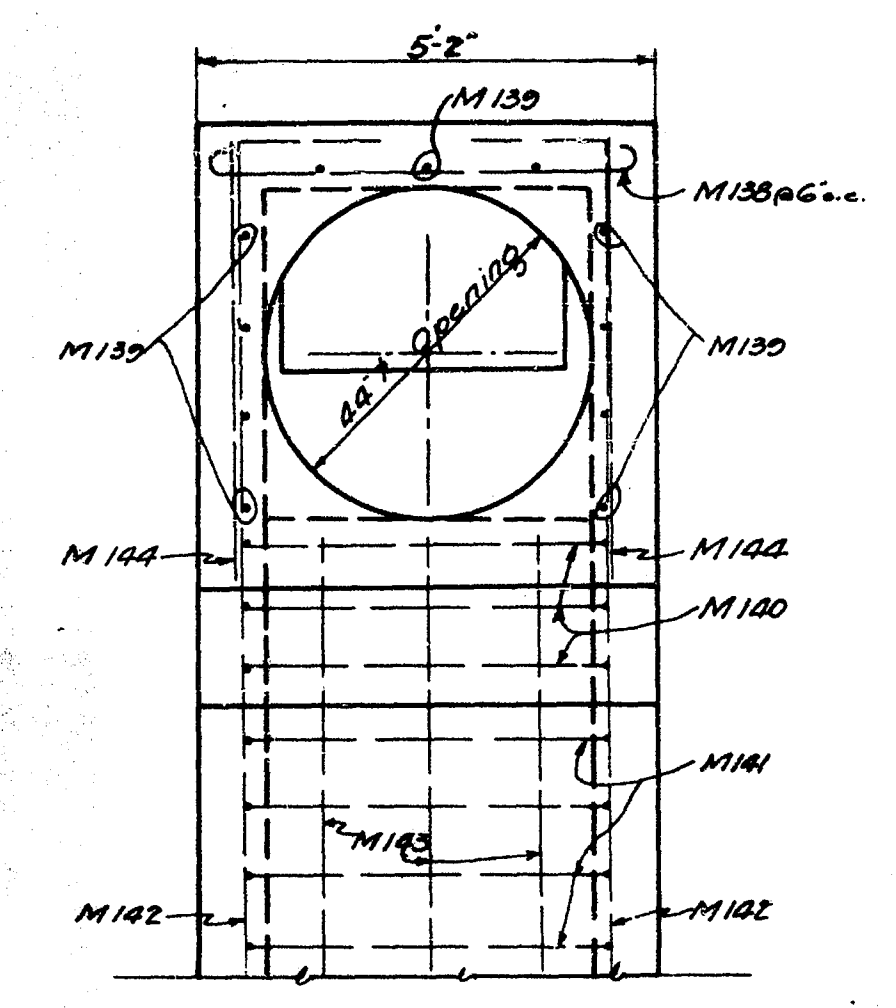
— Section D-D —

Note:
 One manhole as shown at Syndicate and Sutherland
 One similar manhole opposite front of Grace St & Port Douglas

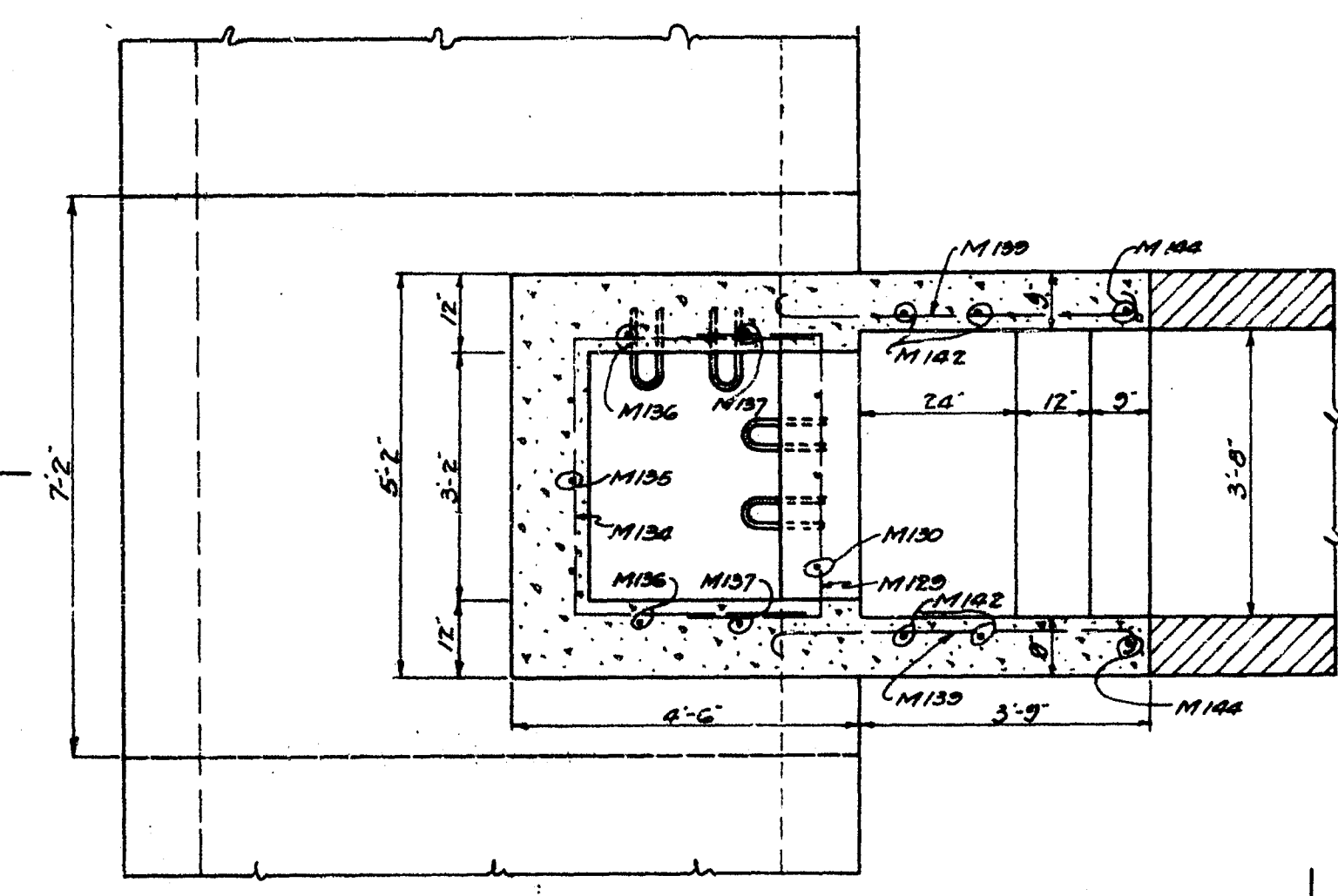
GREATER WINNIPEG SANITARY DISTRICT
 MIDLAND SECONDARY
 MANHOLE PLAN
 DATE DEC 31 1925
 SHEET NO. 105
 CONTRACT NO. 102



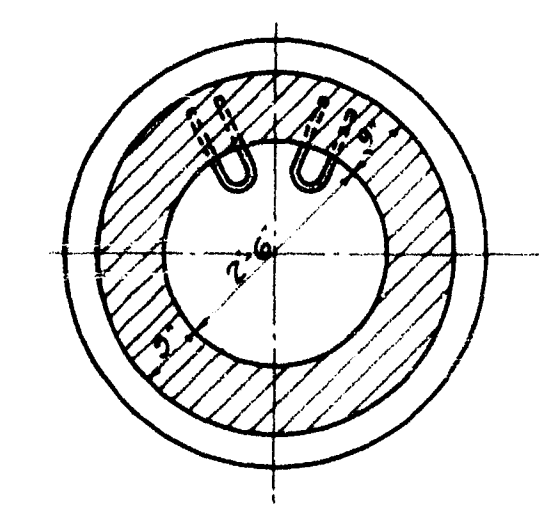
SECTION C-C



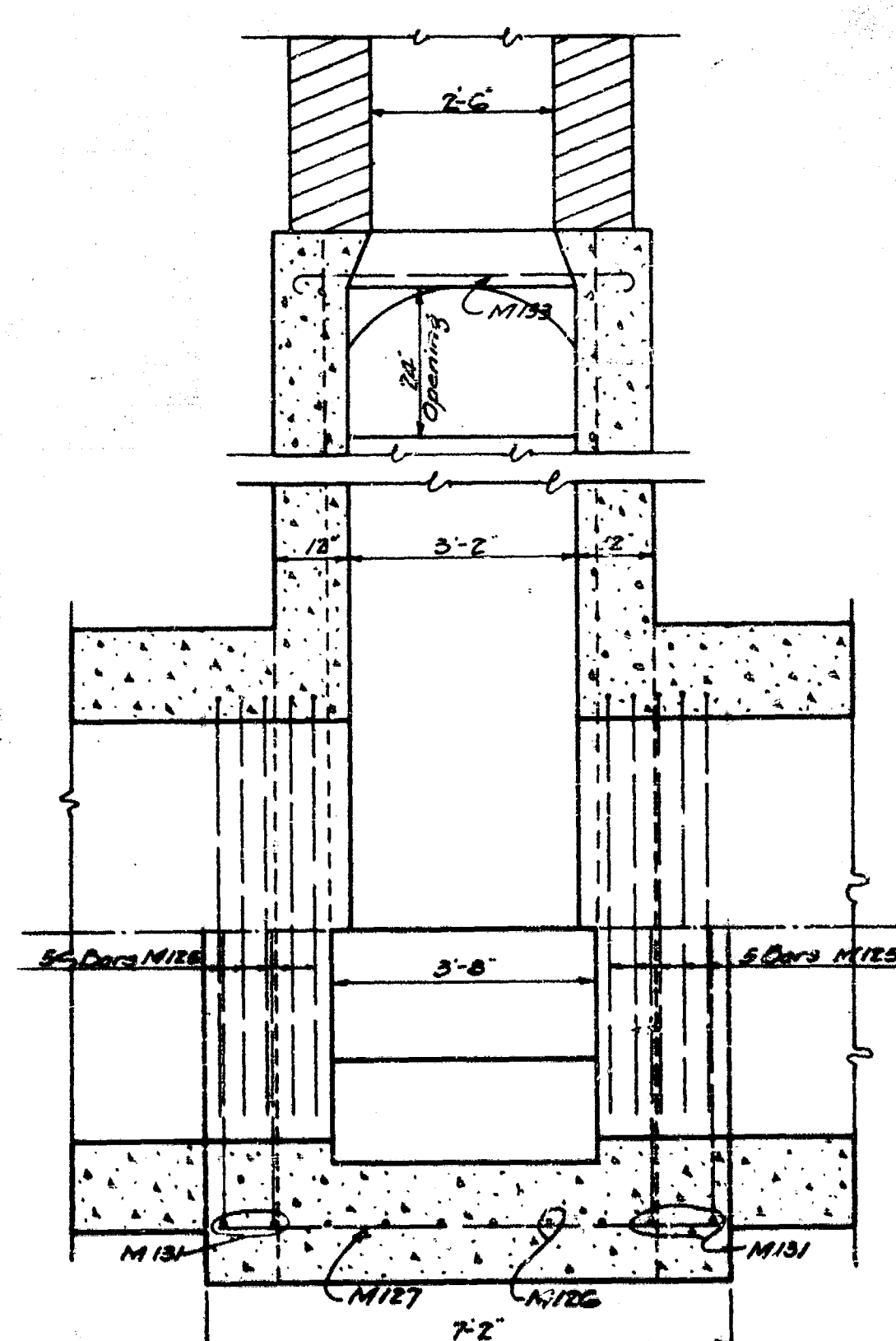
SECTION E-E



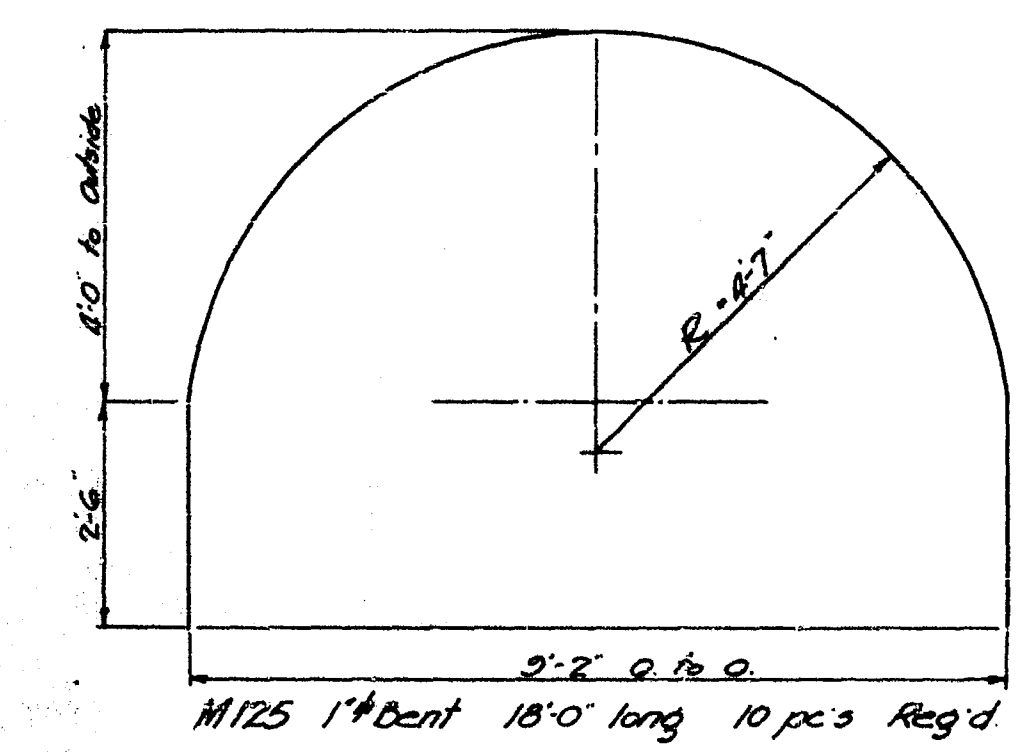
SECTION A-A



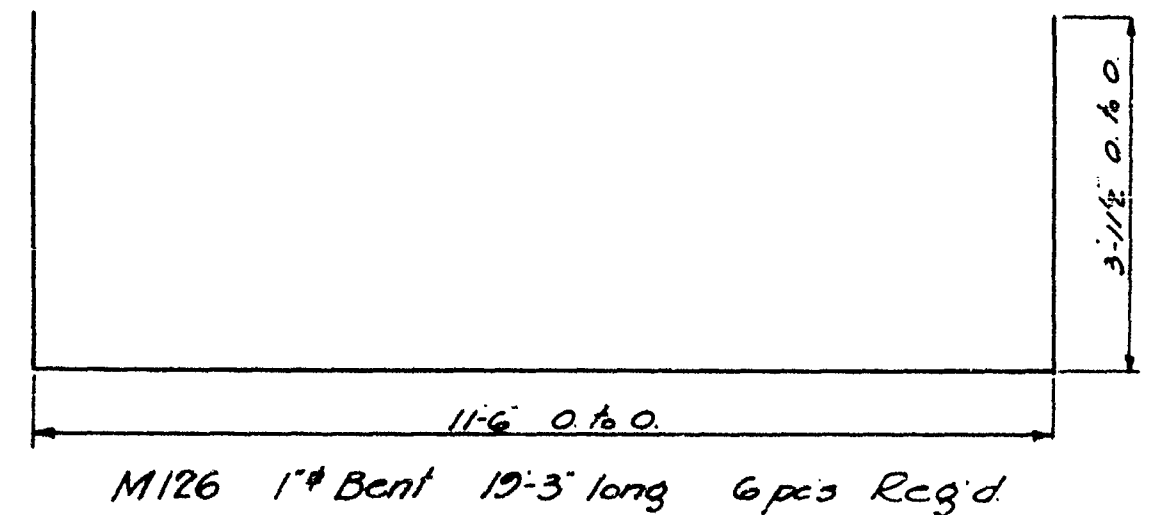
SECTION D-D



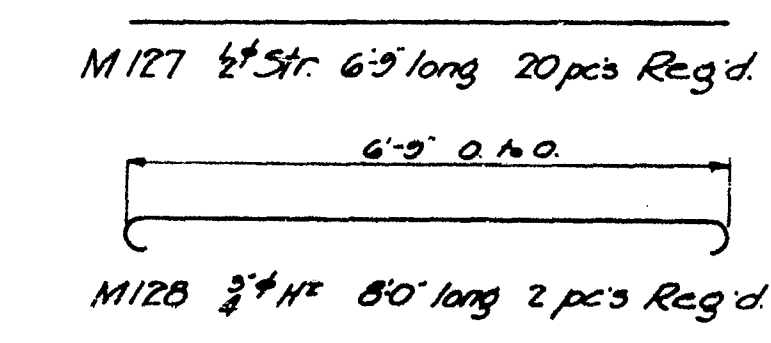
SECTION B-B



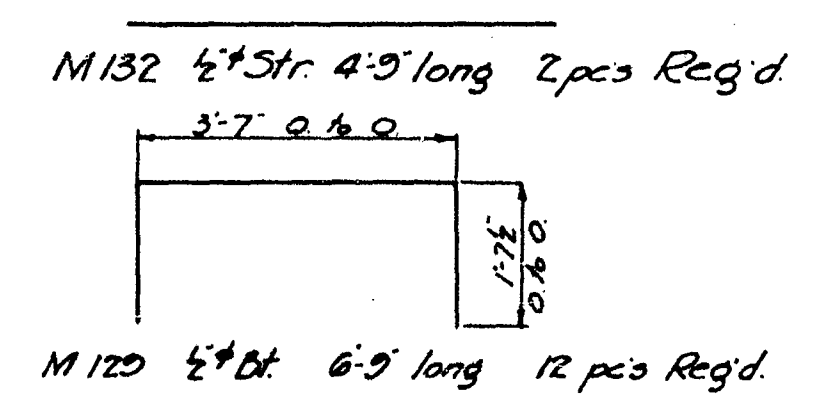
M125 1" Bent 18'-0" long 10 pcs Reg'd



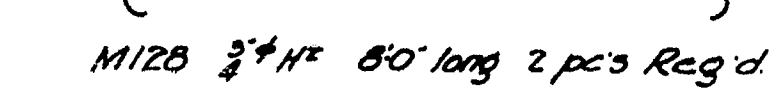
M126 1" Bent 19'-3" long 6 pcs Reg'd



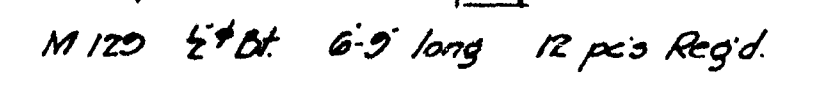
M127 1/2" Str 6'-9" long 20 pcs Reg'd



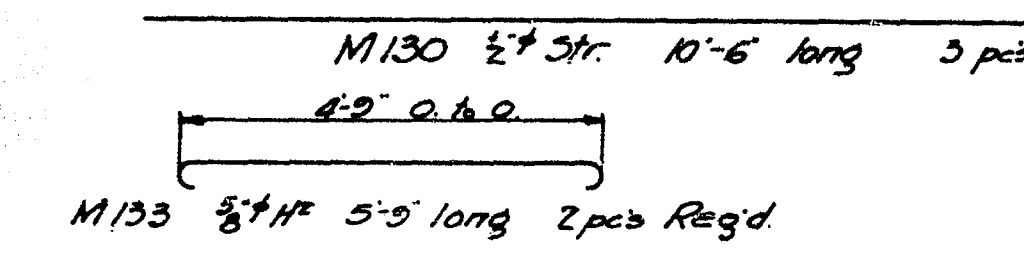
M132 1/2" Str 4'-9" long 2 pcs Reg'd



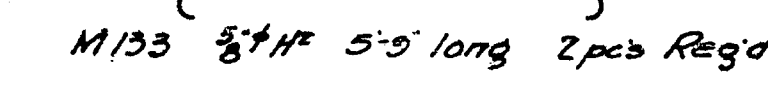
M128 3/4" Str 8'-0" long 2 pcs Reg'd



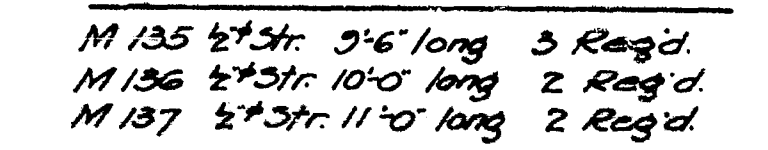
M129 1/2" Str 6'-9" long 12 pcs Reg'd



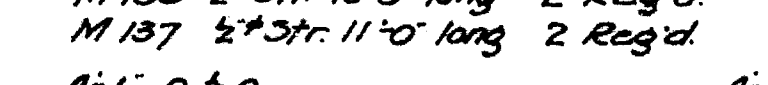
M130 1/2" Str 10'-6" long 3 pcs Reg'd



M133 3/4" Str 5'-9" long 2 pcs Reg'd



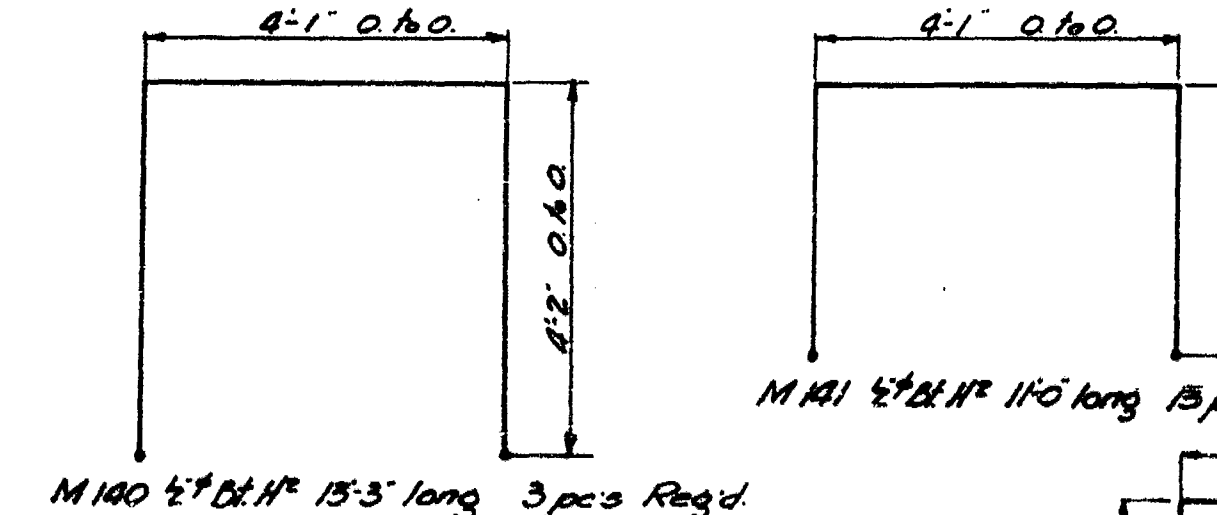
M135 1/2" Str 9'-6" long 3 Reg'd



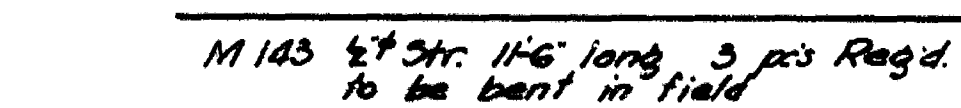
M136 1/2" Str 10'-0" long 2 Reg'd



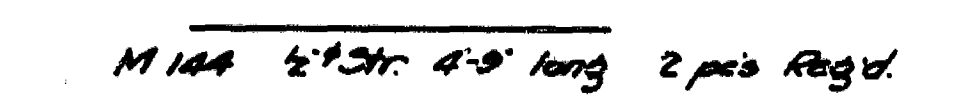
M137 1/2" Str 11'-0" long 2 Reg'd



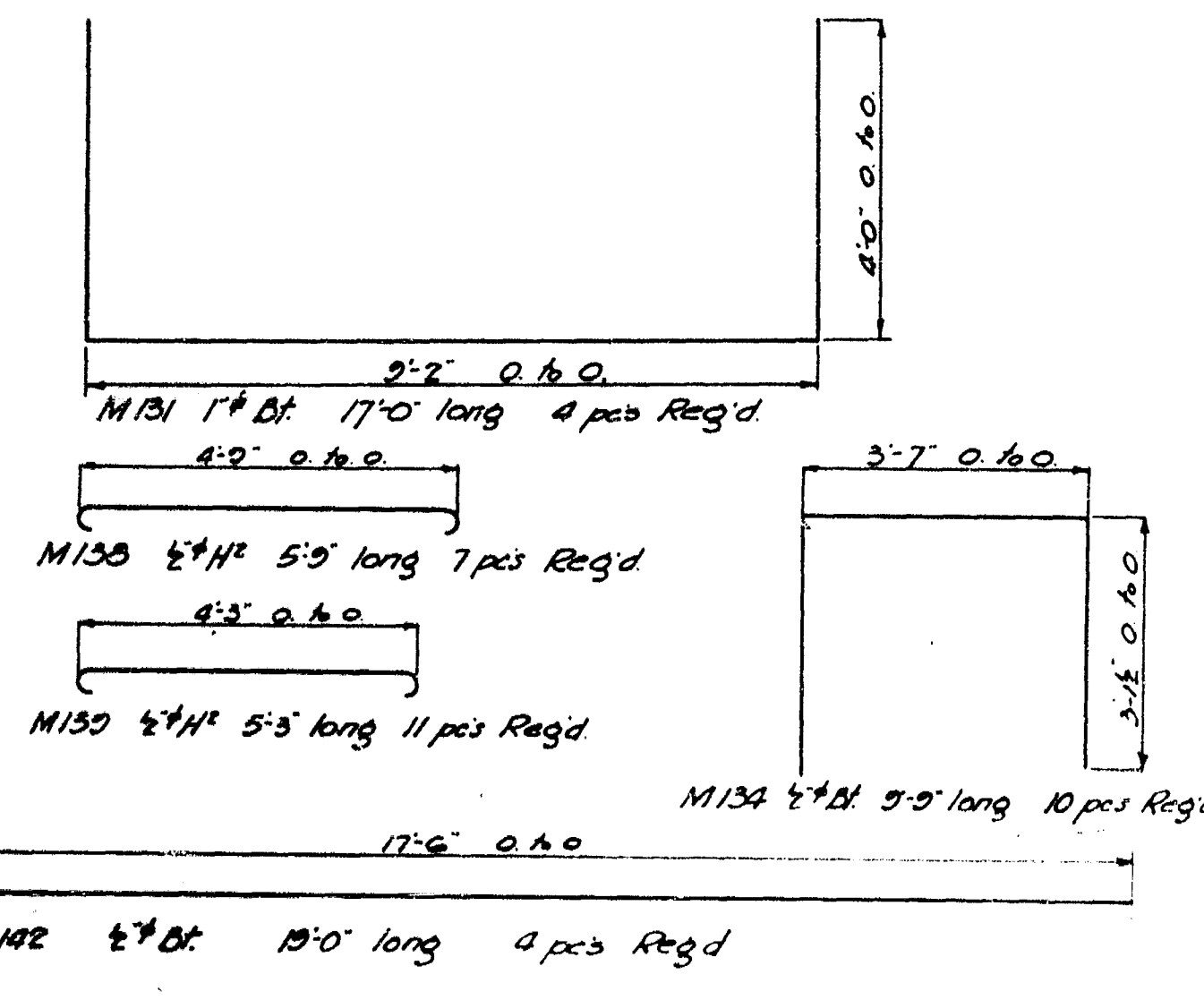
M140 1/2" Str 13'-3" long 3 pcs Reg'd



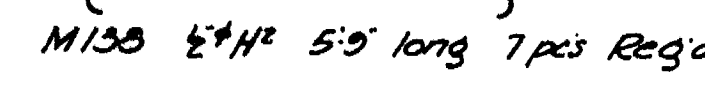
M143 1/2" Str 11'-6" long 3 pcs Reg'd to be bent in field



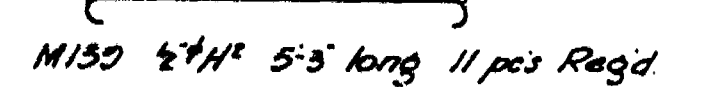
M144 1/2" Str 4'-9" long 2 pcs Reg'd



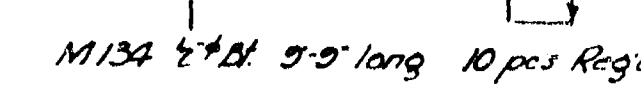
M131 1" Str 17'-0" long 4 pcs Reg'd



M138 1/2" Str 5'-9" long 7 pcs Reg'd



M139 1/2" Str 5'-9" long 11 pcs Reg'd



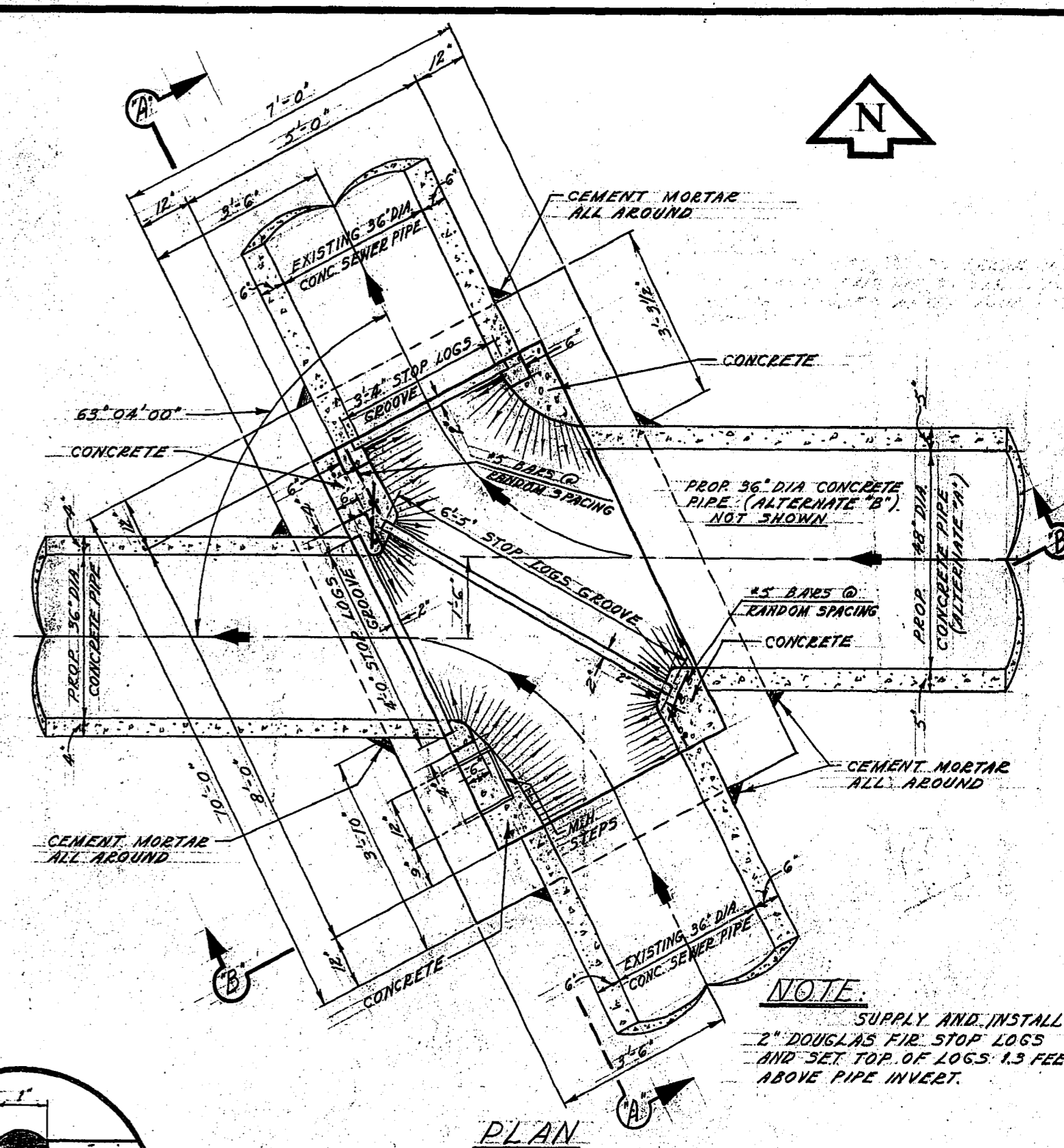
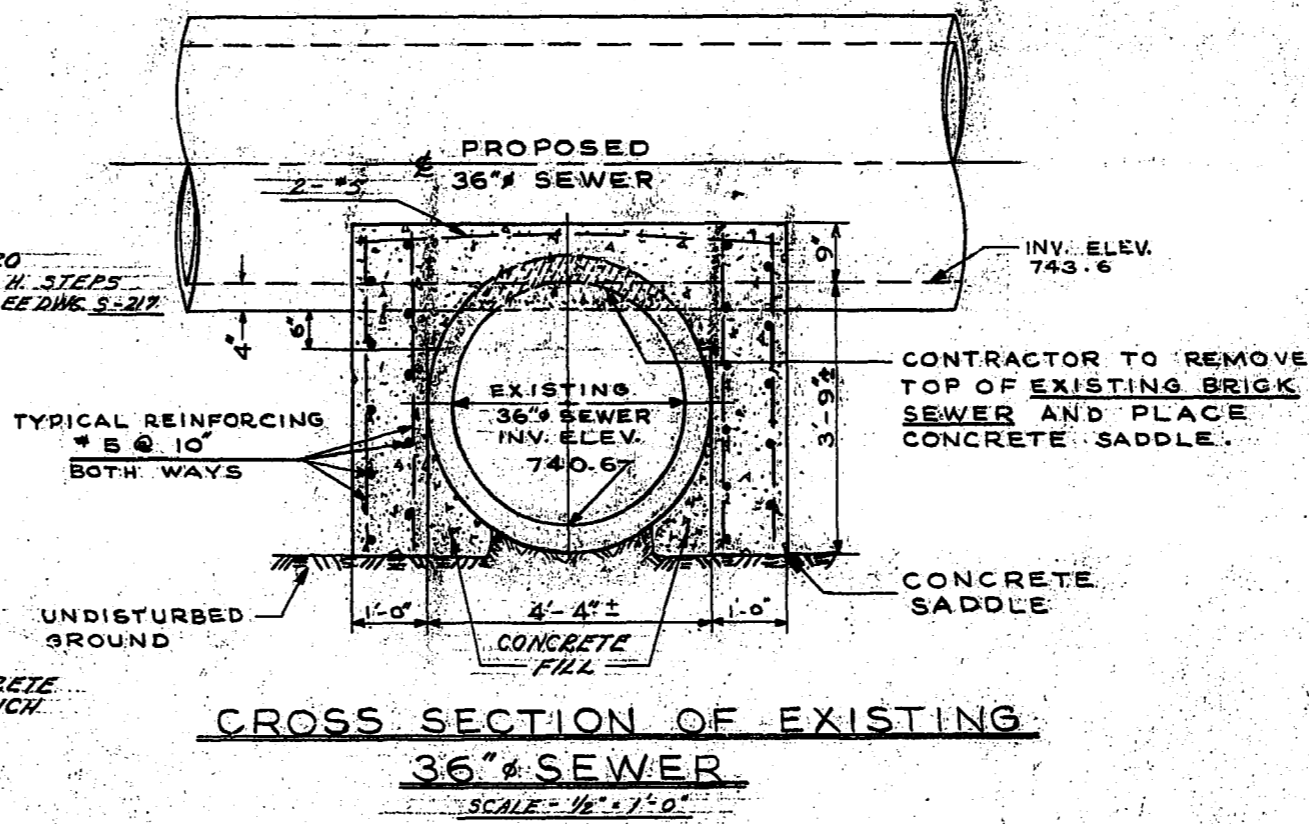
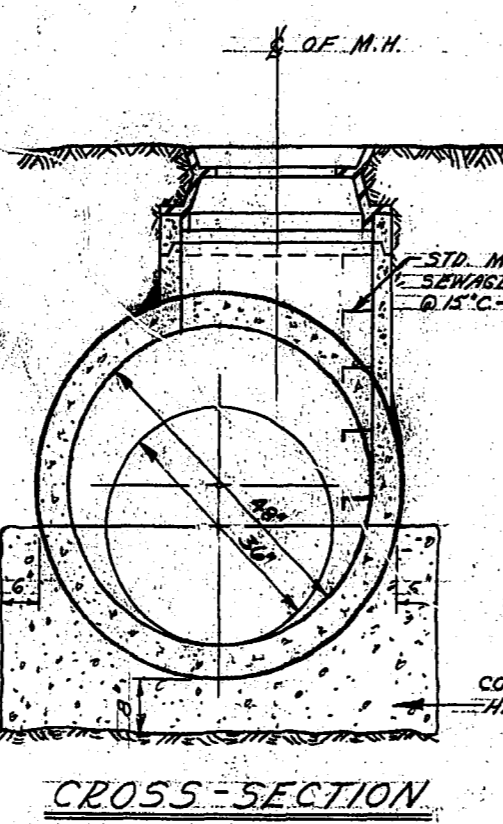
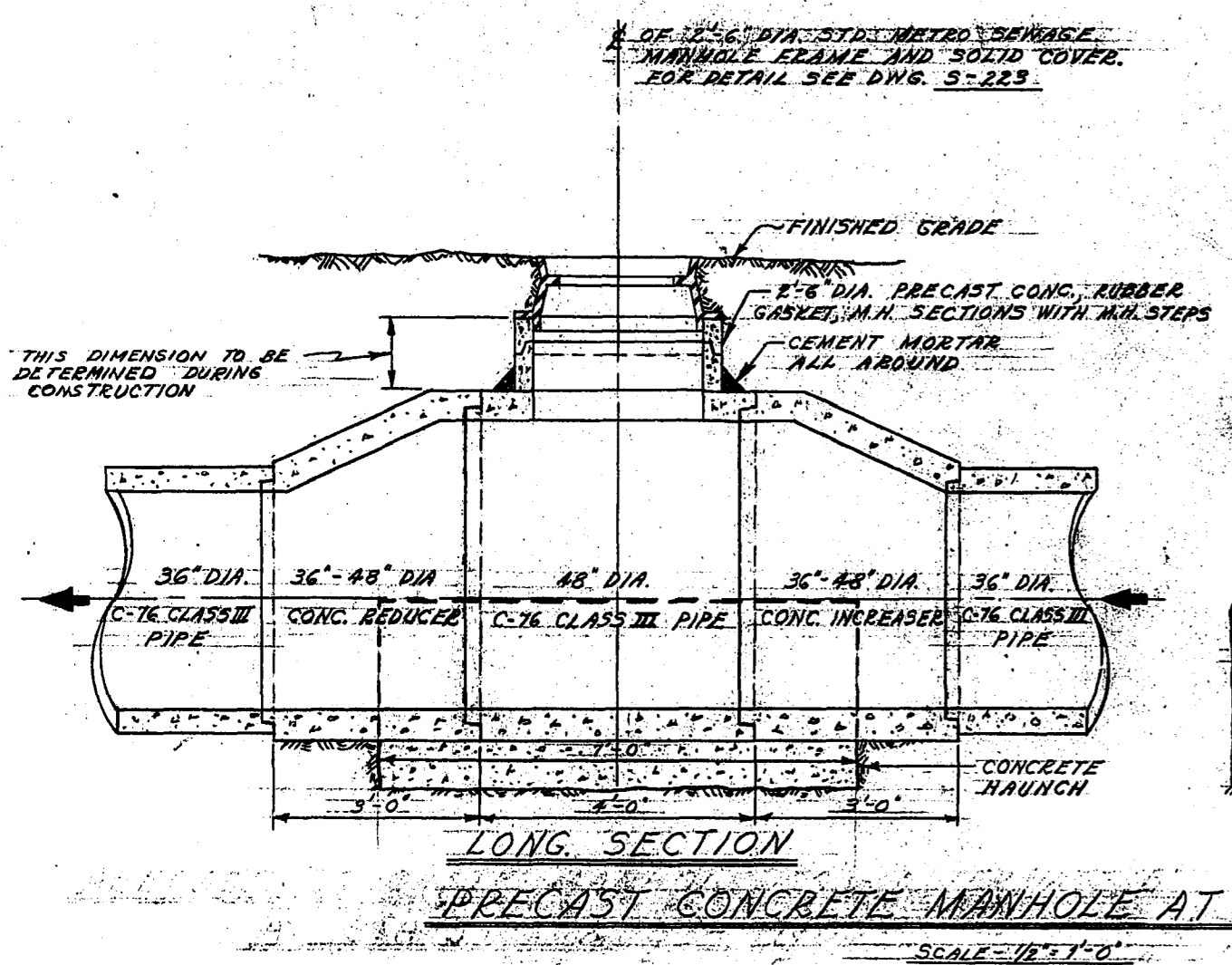
M134 1/2" Str 9'-9" long 10 pcs Reg'd



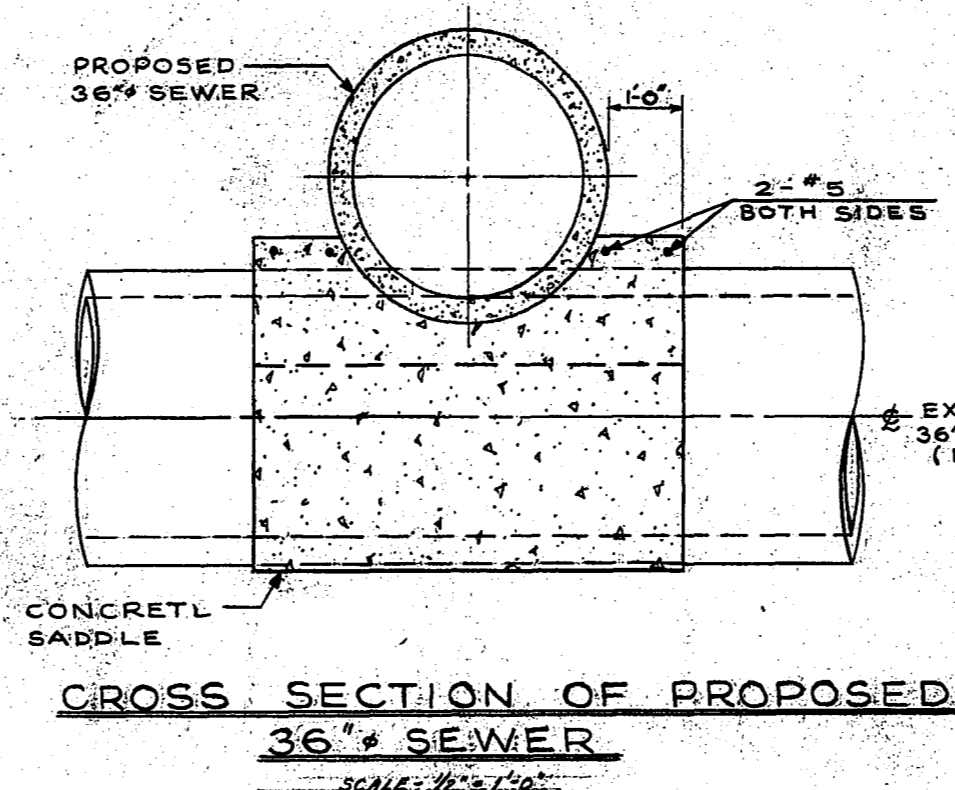
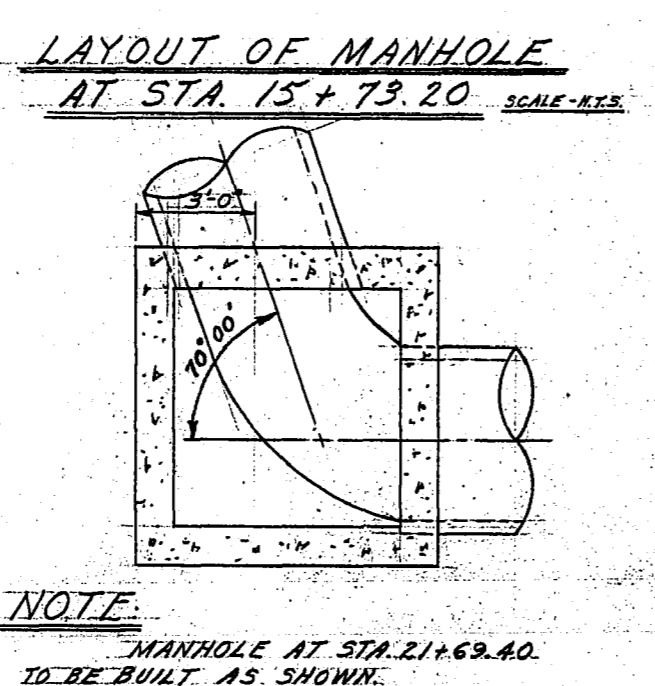
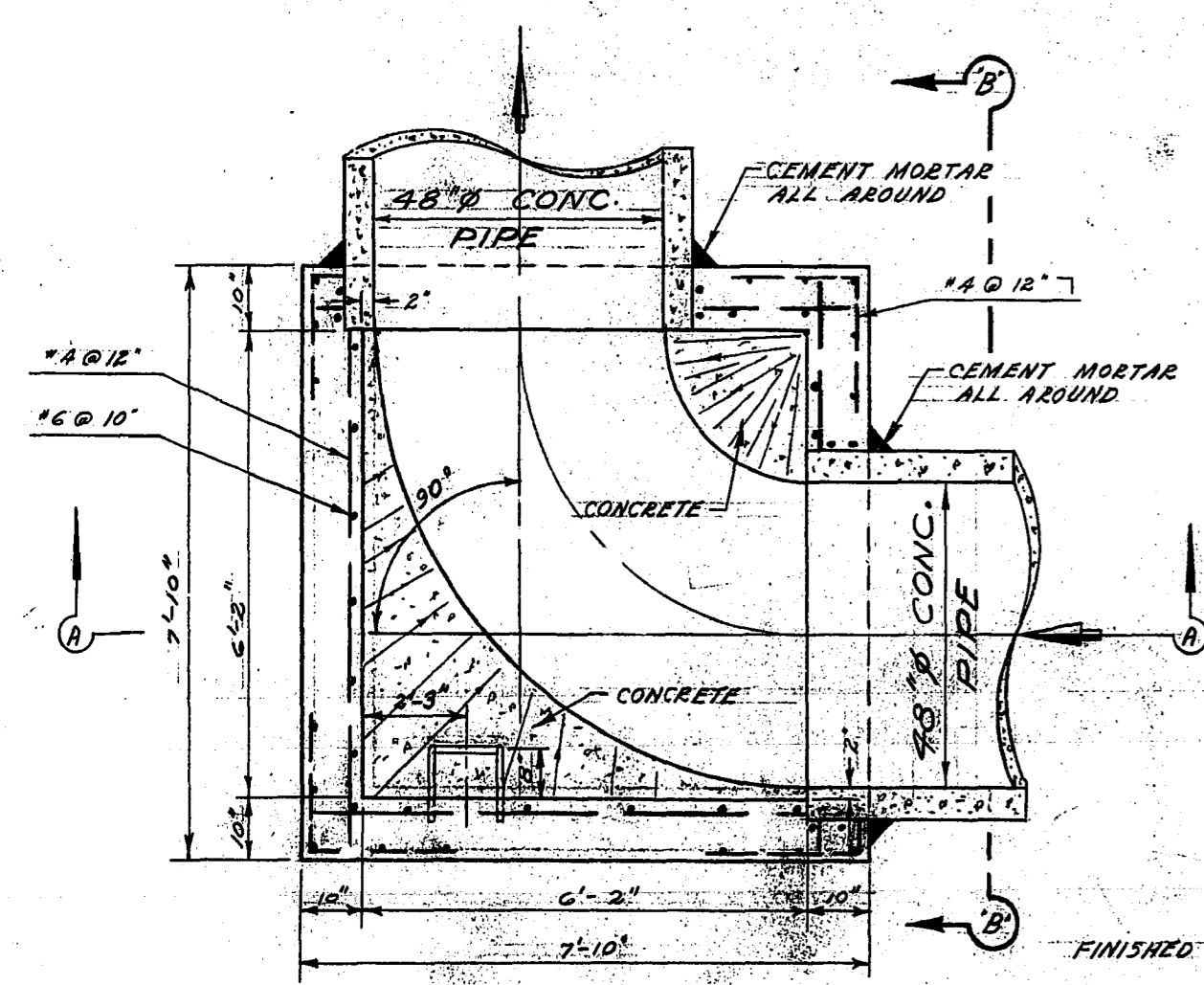
M142 1/2" Str 15'-0" long 4 pcs Reg'd

APPROVED

GREATER WINNIPEG SANITARY DISTRICT W. B. LPA ENGINEERING BOARD W. W. BISHOP, Chm. Eng. W. McEwen J. S. Barrett C. S. London		TITLE: SUTHERLAND SECONDARY DEPT. 12 OF DROP CHAMBER AT MAIN INTERCEPTOR 1910 Dec. 11 1915 107 APPROVED: [Signature] [Signature]
--	--	---



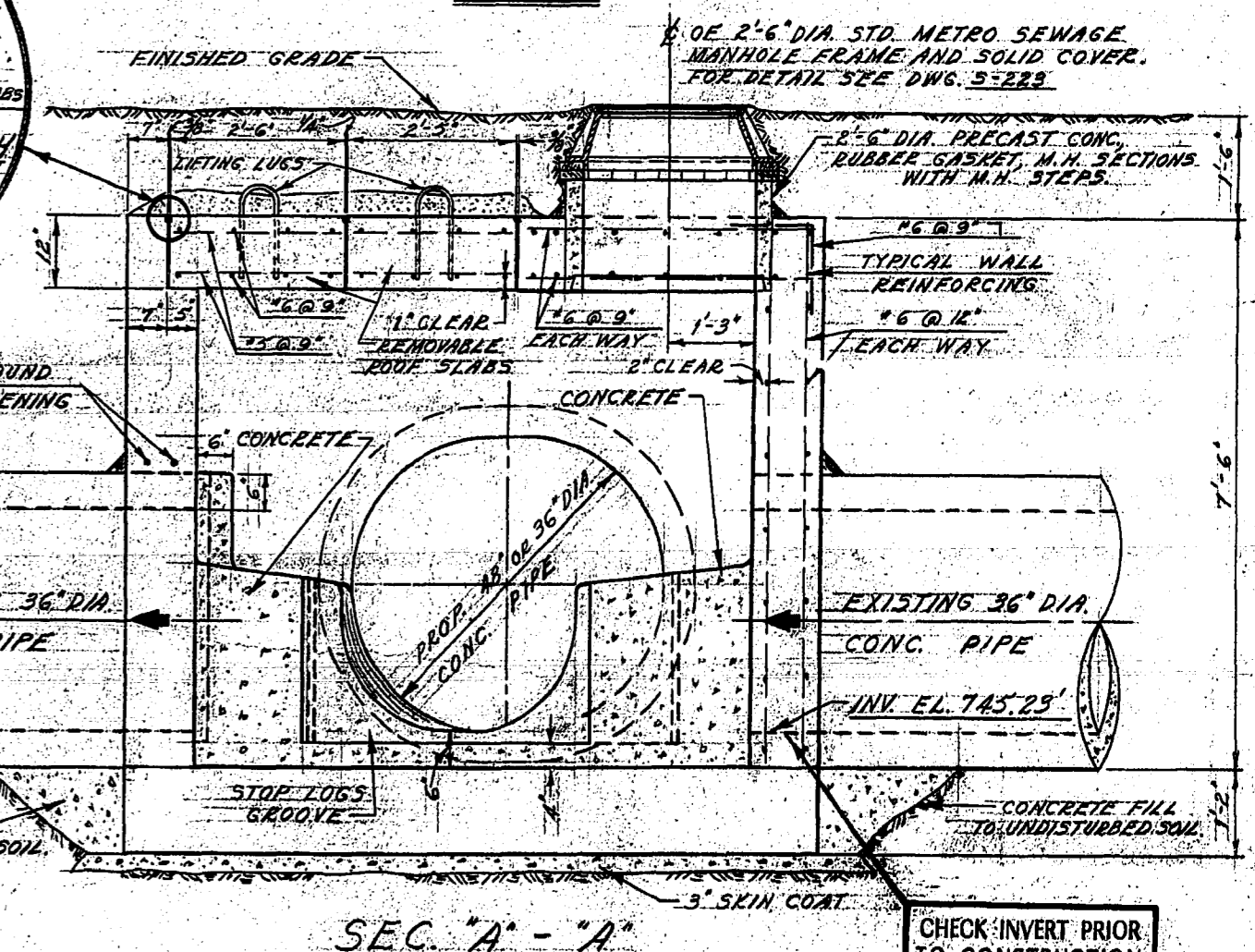
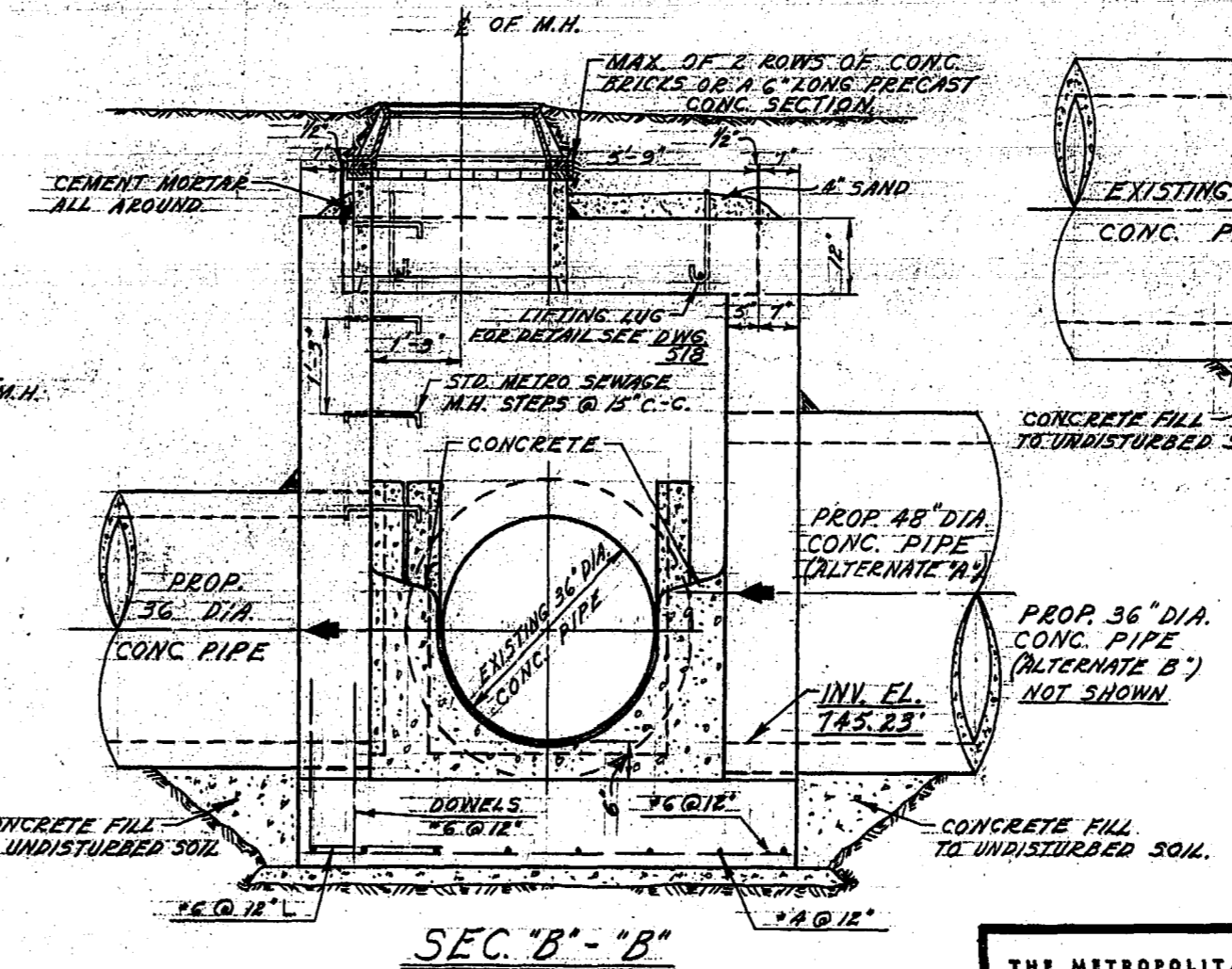
NOTE:
SUPPLY AND INSTALL
2" DOUGLAS FIR STOP LOGS
AND SET TOP OF LOGS 1.5 FEET
ABOVE PIPE INVERT.



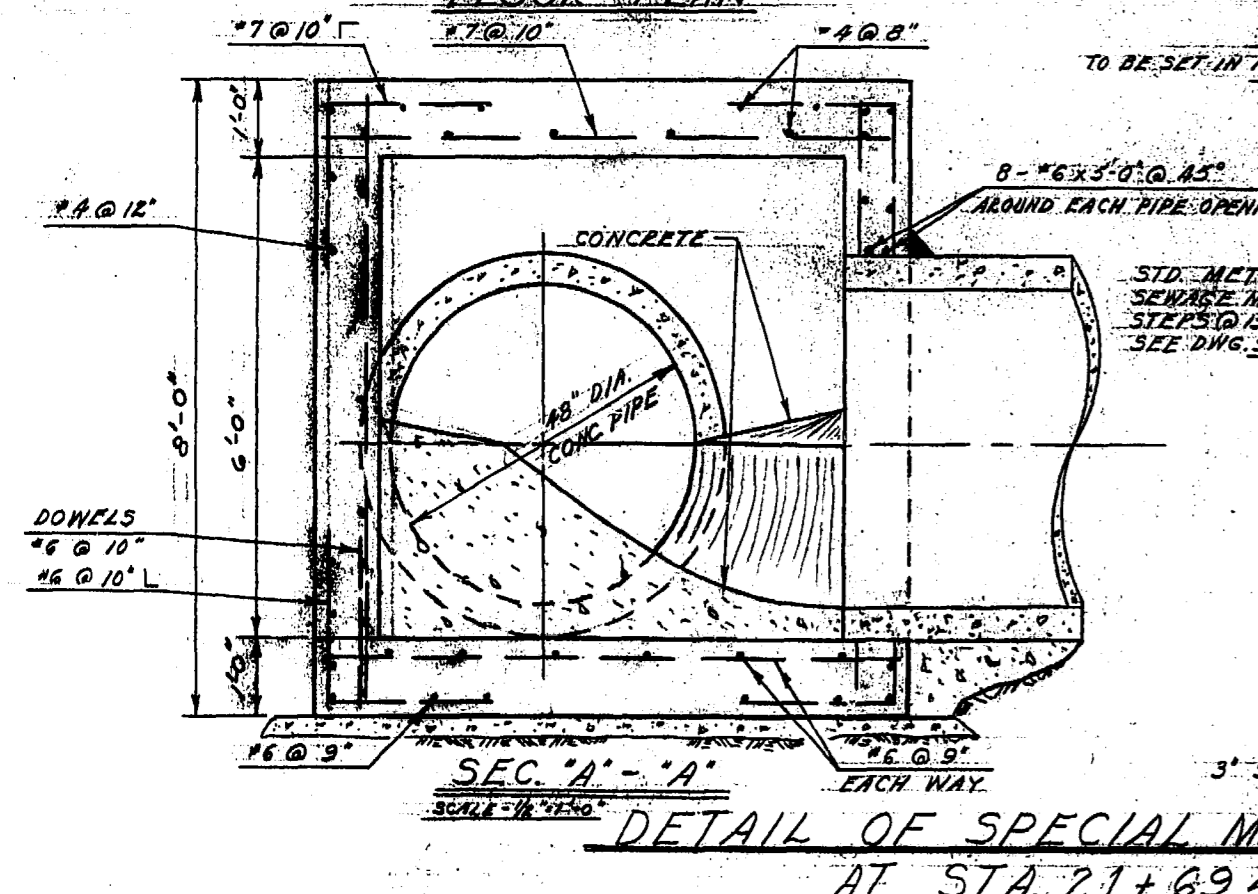
DETAIL SEWER X-ING AT STA. 0+62

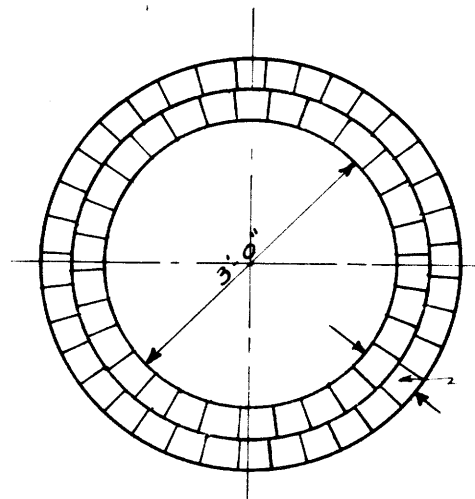
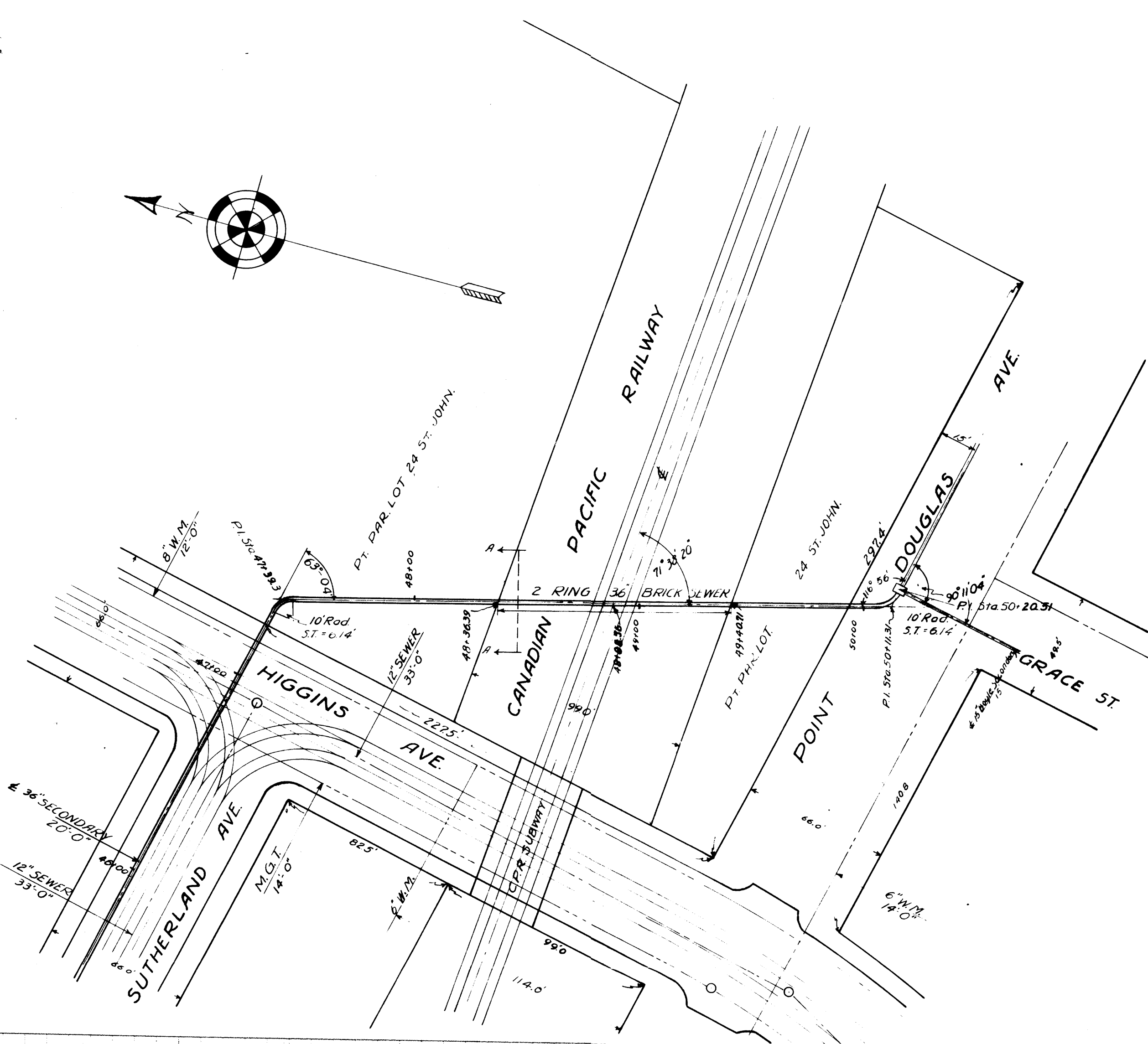


NOTE:
MANHOLE AT STA. 21+69.40
TO BE BUILT AS SHOWN.



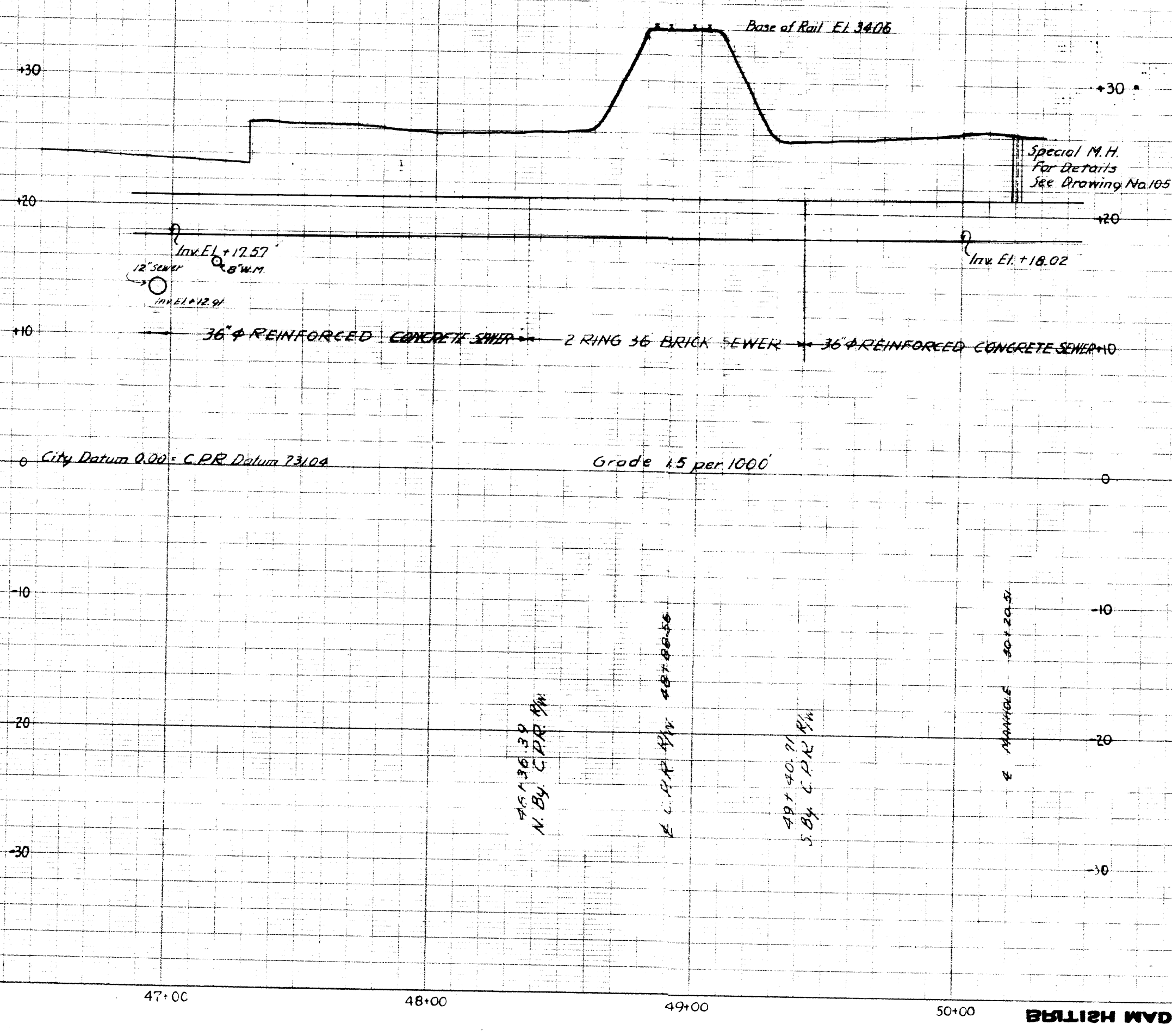
DETAIL OF SPECIAL CHAMBER AT STA. 21+69.40
HIGGINS ST. AND SUTHERLAND AVE.





SECTION A-A
Scale 1/2" = 1'-0"

LEGEND
 --- SEWER
 --- WATER MAIN
 --- MAN. GOV. TEL



10513

GREATER WINNIPEG SANITARY DISTRICT			
ENGINEERING BOARD	APPROVED	DATE	TITLE PLAN & PROFILE OF PROPOSED
W. P. BRIDGEMAN, Chairman	<i>[Signature]</i>		36" SEWER ACROSS C.P.R. R/W
R. W. MCKINNON,	<i>[Signature]</i>		FROM SUTHERLAND TO POINT DOUGLAS
J. W. BASTARDI,	<i>[Signature]</i>		SCALE: 1" = 40' HOR.
CHAR. F. GRAY,	<i>[Signature]</i>		DATE: NOV. 5, 1935
			DRAWN BY: H. B. BROWN
			TRACED BY: J. W. BASTARDI
			PLAN No. 105
			CHECKED BY: J. W. BASTARDI
			CONTRACT No. 105
			APPROVED BY: <i>[Signature]</i> / Asst. Chief Engineer

NOTES: Revision 'A' Elevation of Invert raised January 23/36