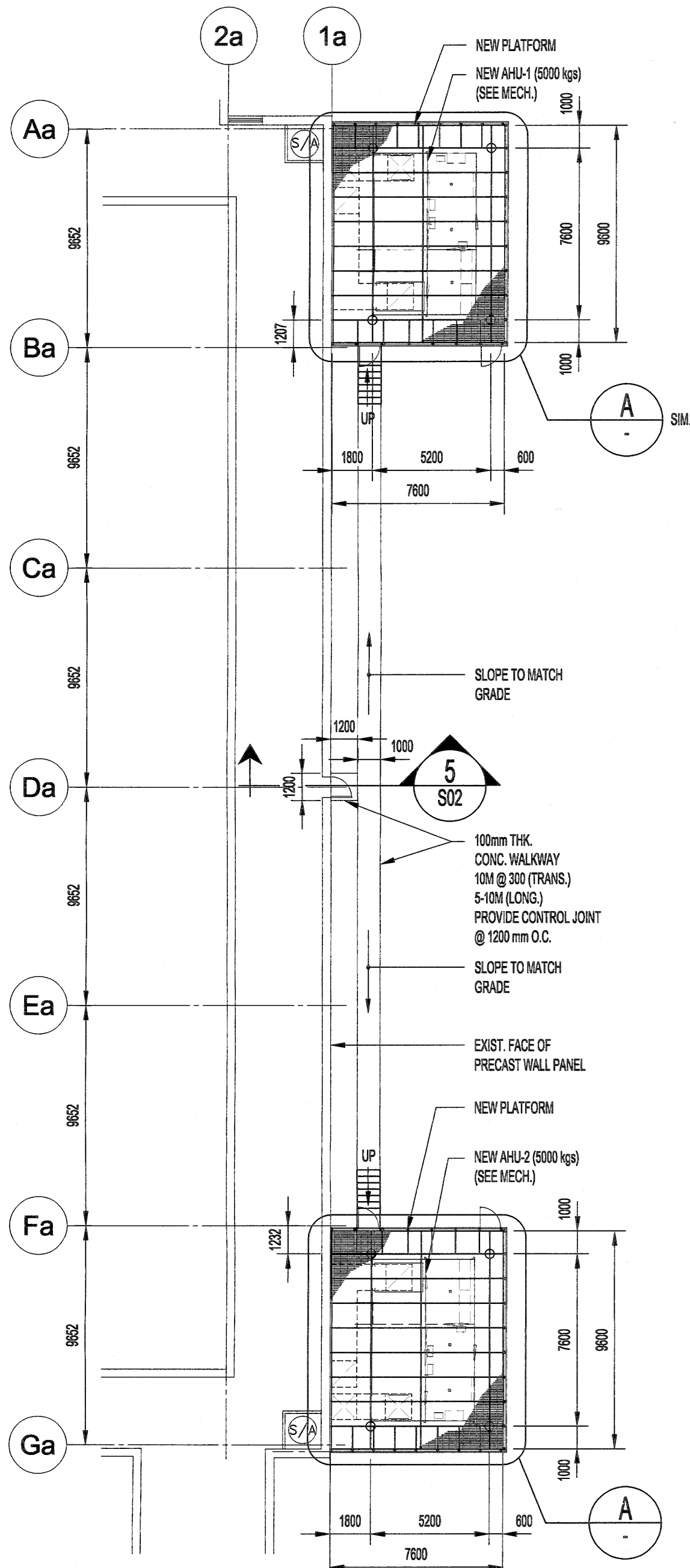
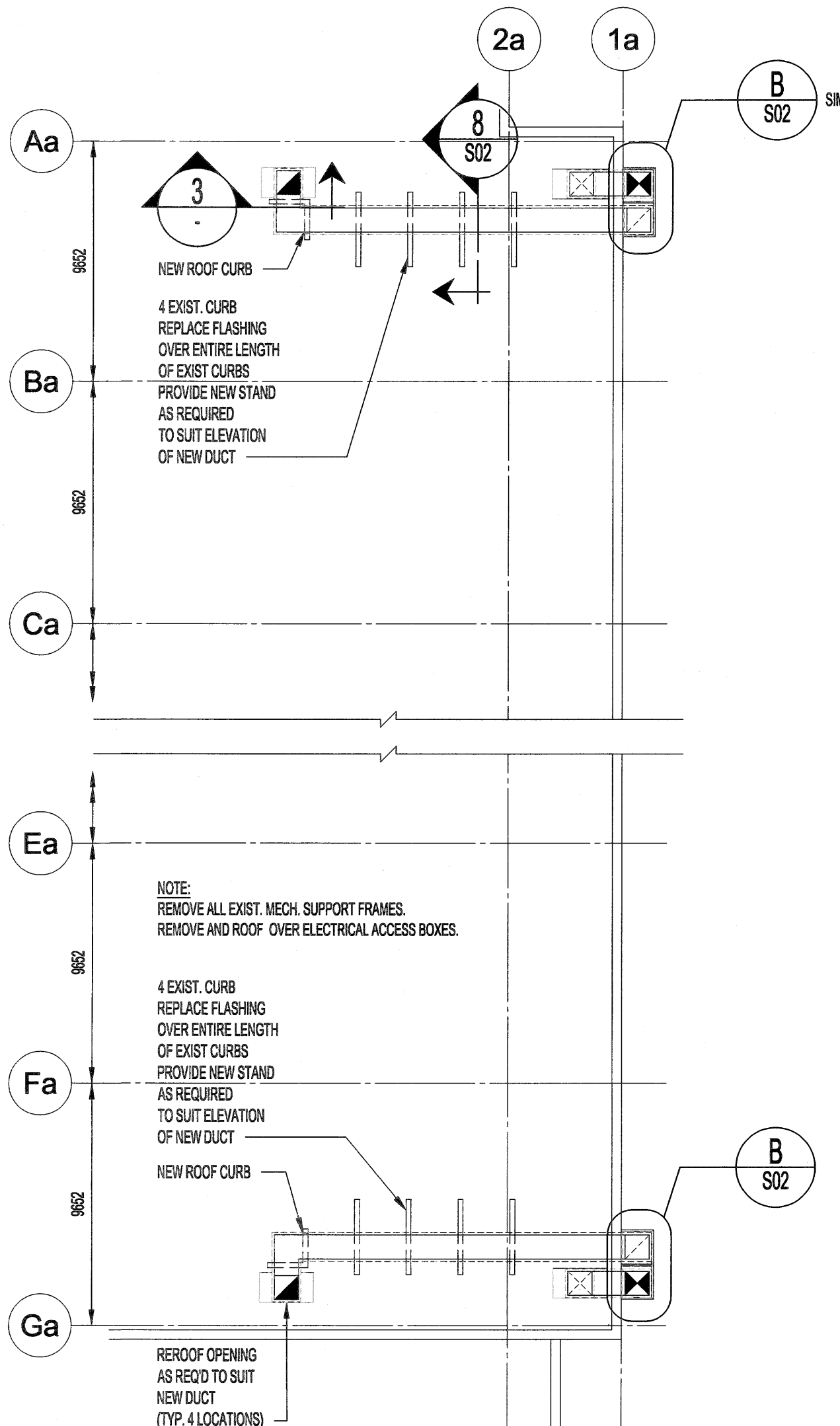


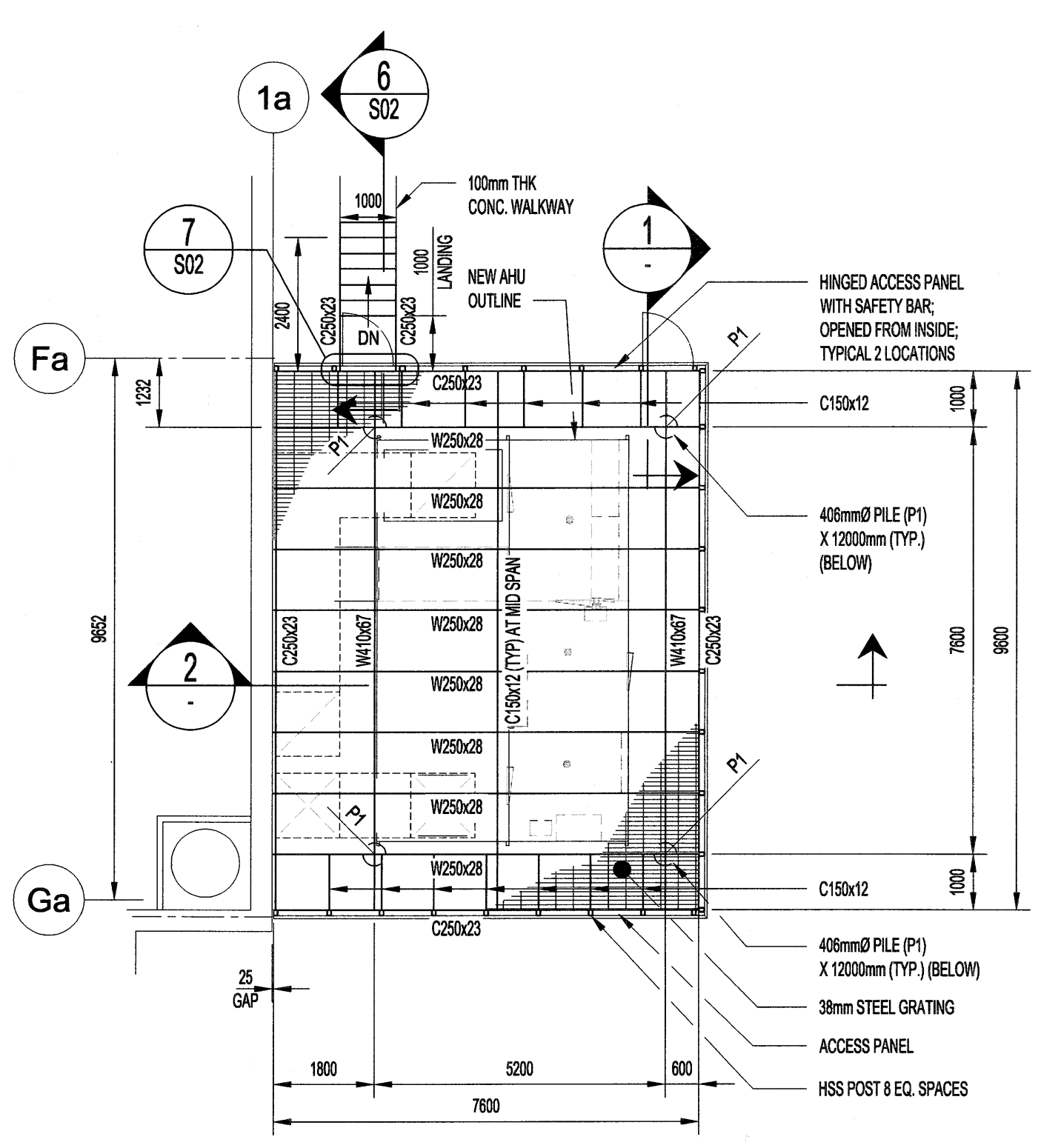
FILE NAME: 204-2018_DRAWING_S01 DATE: PROJECT No: 17-0107-023 SHEET TITLE: STRUCTURAL - PLATFORM FRAMING - PLAN, SECTION & DETAILS ADDRESS: 25 POSEIDON BAY



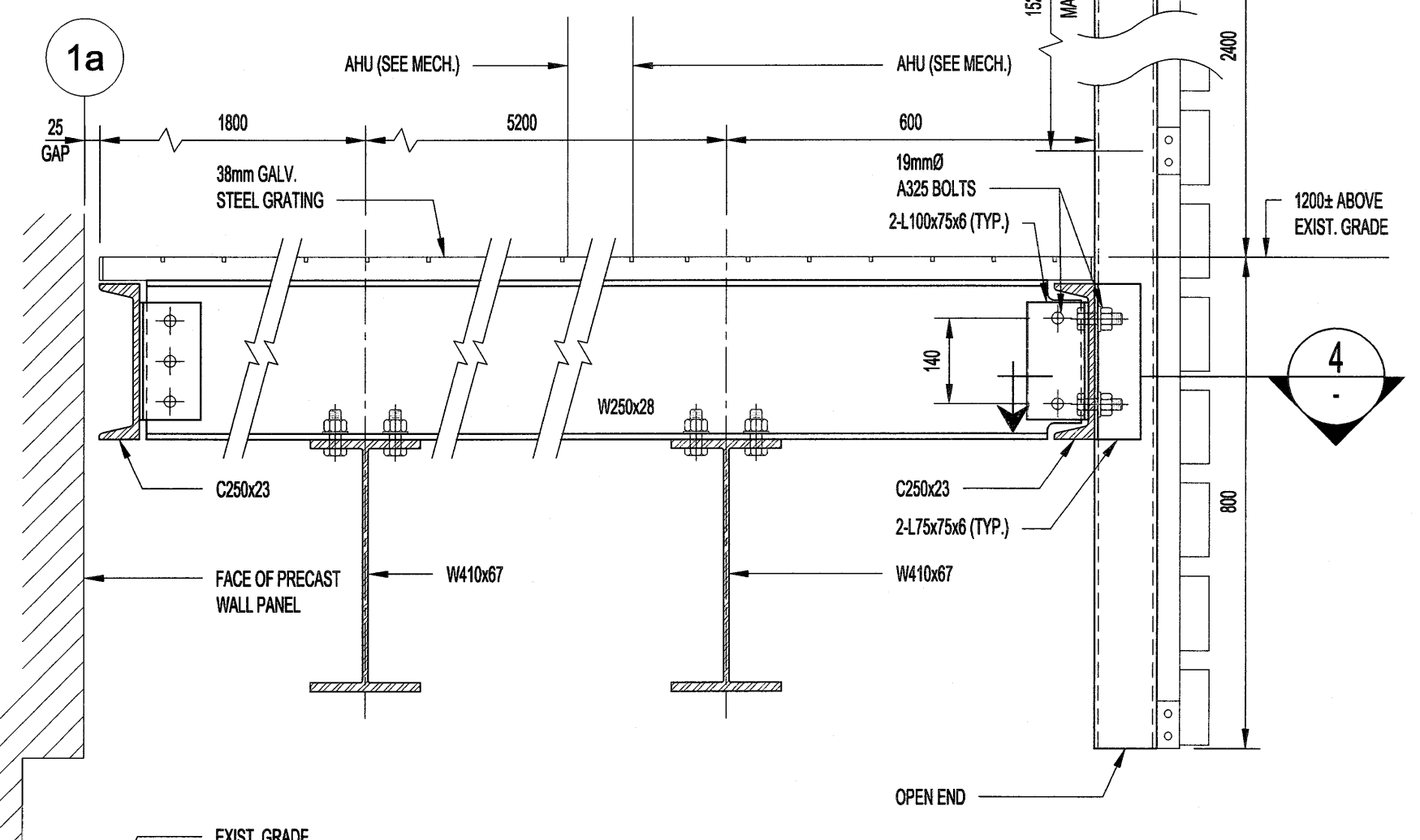
MAIN FLOOR PARTIAL PLAN
SCALE 1:200



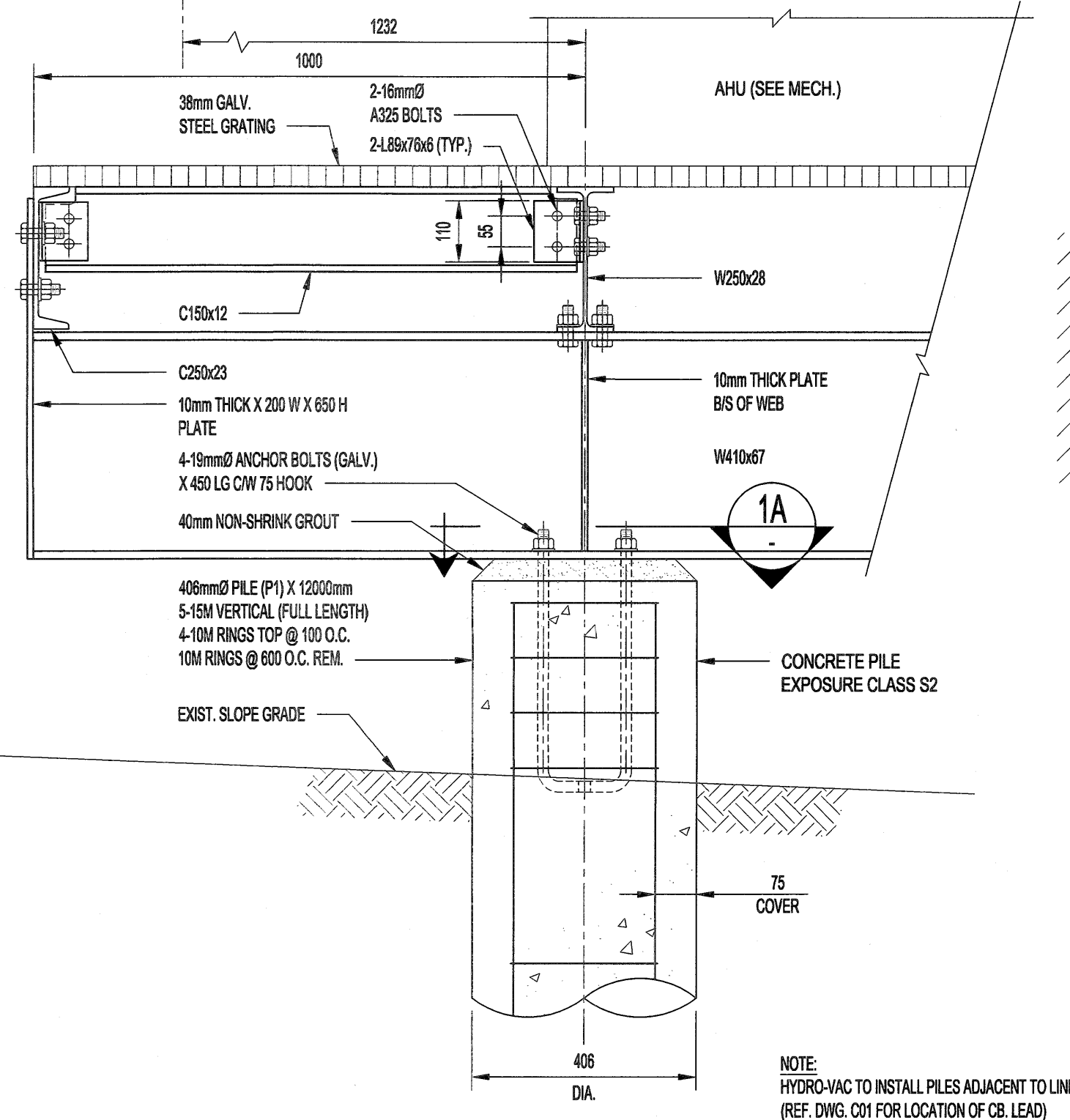
ROOF PARTIAL PLAN (ALSO REF. MECH. DWG M06)
SCALE 1:200



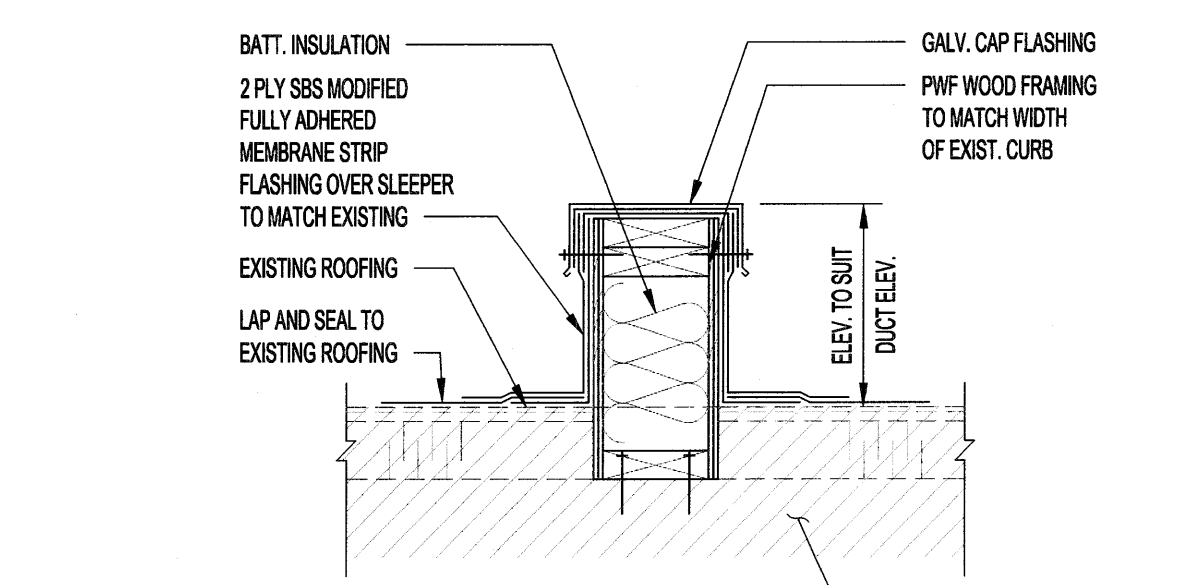
PLATFORM FRAMING PLAN
SCALE 1:100



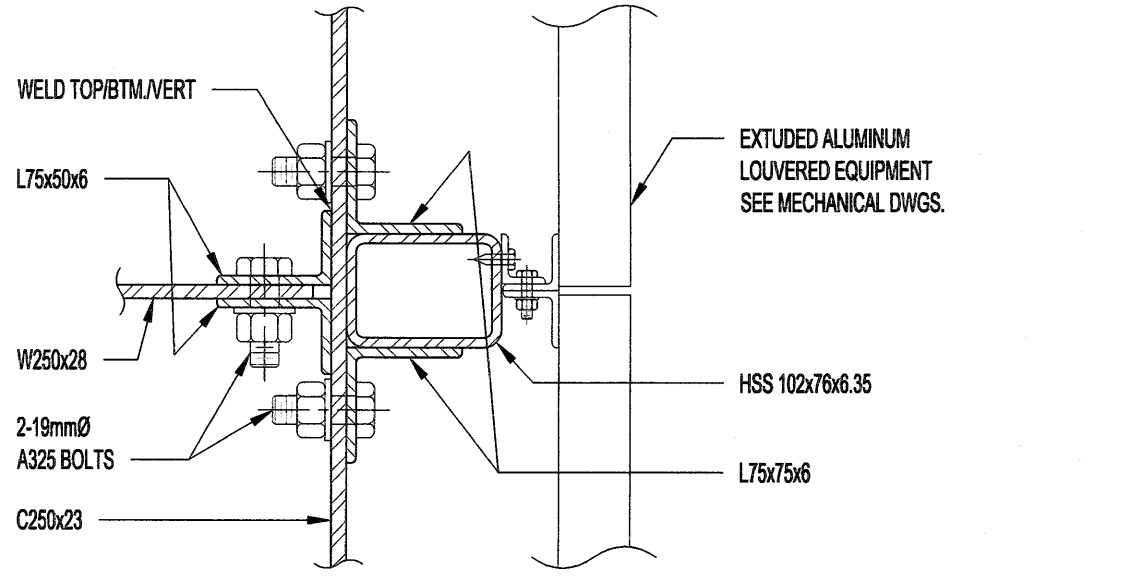
SECTION 2
SCALE 1:10



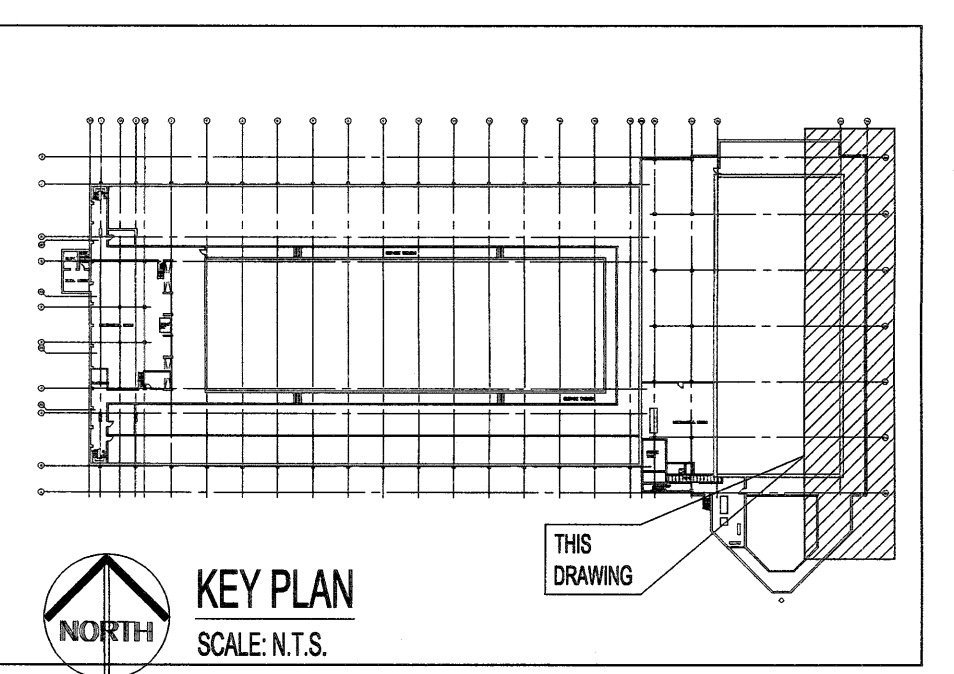
SECTION 1
SCALE 1:10



SECTION 3
SCALE 1:10



SECTION 4
SCALE 1:5



KEY PLAN
SCALE: N.T.S.

STRUCTURAL AND MISCELLANEOUS STEEL:

- STRUCTURAL AND MISCELLANEOUS STEEL FABRICATION AND ERECTION SHALL BE IN ACCORDANCE WITH CANCSA S16 (LATEST).
- STRUCTURAL STEEL SHALL MEET THE REQUIREMENTS OF CANCSA G40.20/G40.21 (LATEST).
ROLLED W-SHAPES CSA G40.21-350W
ROLLED SHAPES & PLATES CSA G40.21-300W
BOLTS, NUTS, & WASHERS ASTM A325-14
WELDING ELECTRODES CSA W48-14
- WELDING SHALL BE IN ACCORDANCE WITH CSA W59 (LATEST), BY WELDERS CERTIFIED AND QUALIFIED IN ACCORDANCE WITH CSA W47.1 (LATEST). ALL WELDS TO BE 6mm UNLESS NOTED OTHERWISE.
- FIELD CONNECTIONS SHALL BE BOLTED 19mm DIAMETER A325 BEARING TYPE UNLESS NOTED OTHERWISE. BOLTS SHALL BE TIGHTENED IN ACCORDANCE WITH CSA S16 (LATEST).
- CONTRACTOR SHALL SUBMIT SHOP DRAWINGS FOR REVIEW PRIOR TO FABRICATION.
- STRUCTURAL AND MISCELLANEOUS STEEL SHALL BE FINISHED AS INDICATED BELOW, UNLESS OTHERWISE NOTED, OR APPROVED EQUAL IN ACCORDANCE WITH B7:
GALVANIZED STEEL
- SURFACE PREP. TO SP8 (PICKLING)
- HOT DIPPED GALVANIZED TO ASTM A123-13
- FIELD TOUCH-UP WITH [ZINC-RICH COATING, GALVANIZING SOLDER] TO MATCH GALVANIZED STEEL. ACCEPTABLE PRODUCT: [ZINGA, GAL-VIZ] OR APPROVED EQUAL IN ACCORDANCE WITH B7.
- FIELD TOUCH-UP PAINT TO CONNECTIONS, WELDS, BURNED OR DAMAGED SURFACES, AND UNFINISHED SURFACES AT COMPLETION OF ERECTION AND SHALL MATCH THICKNESS AS SPECIFIED.

STRUCTURAL STEEL GRATING:

- STEEL GRATING AND GRATING STAIR TREADS TO BE [TYPE 19-4 STANDARD FLOWFORGE STEEL GRATING BY FISHER & LUJLOW].
- BEARING BARS TO BE 38mm DEEP X 4.8mm WIDE, SPACED AT 30mm CENTERS FOR INTERIOR SURFACES, UNLESS NOTED OTHERWISE.
- GRATING SHALL HAVE A GALVANIZED FINISH.
- ALL OUT EDGES SHALL BE Banded.
- GRATING STAIR TREADS SHALL HAVE CHECKER PLATE NOSING.
- ALL GRATING AND STAIR TREADS SHALL BE CLIPPED TO STRUCTURAL FRAMING UNLESS NOTED. MINIMUM OF 2 CLIPS PER EACH STRUCTURAL SUPPORT TO BE PROVIDED.

SCREEN NOTES:

- LOUVERED EQUIPMENT SCREEN TO BE OF EXTRUDED ALUMINUM SUPPLIED BY ARCHITECTURAL LOUVERS (SEE MECHANICAL) OR APPROVED EQUAL IN ACCORDANCE WITH B7.

NOTES:
THESE DRAWINGS SHALL NOT BE SCALED.
THE CONTRACTOR SHALL VISIT THE SITE AND SATISFY ONESELF ALL DIMENSIONS, DATUM, AND DETAILED INFORMATION SHOWN ARE CORRECT.
THE CONTRACTOR IS TO REVIEW AND COORDINATE ALL MECHANICAL, ELECTRICAL AND STRUCTURAL DRAWINGS.
ALL PRODUCTS AND MATERIALS TO BE USED AND INSTALLED SHALL CONFORM WITH MANUFACTURERS SPECIFICATIONS & APPLICABLE CODES.
THE CONTRACTOR SHALL BE RESPONSIBLE TO PATCH AND MAKE GOOD ALL EXISTING CONSTRUCTION AFFECTED BY THE REMOVAL OF ALL ITEMS FORMING THE PART OF THE RENOVATION WORK.

FOUNDATIONS (C.I.P. CONCRETE PILES):

- THIS DRAWING SHALL BE READ IN CONJUNCTION WITH THE CONTRACT DOCUMENTS AND THE PILING SPECIFICATION.
- FOUNDATIONS SHALL BE CAST-IN-PLACE CONCRETE FRICTION PILES AS SHOWN ON DRAWINGS.
- CONCRETE PILES HAVE BEEN DESIGNED FOR AN AVERAGE ALLOWABLE SKIN FRICTION VALUE OF 14 kPa (SL) AND 18 kPa (ULS).
- CONTRACTOR SHALL RETAIN THE SERVICES OF A GEOTECHNICAL PROFESSIONAL TO INSPECT AND APPROVE THE PILE INSTALLATION AND PROVIDE A SEALED INSPECTION REPORT TO THE CONTRACT ADMINISTRATOR FOR REVIEW.
- THE CONTRACTOR SHALL BE RESPONSIBLE TO VERIFY THE EXISTENCE AND LOCATION OF ALL UNDERGROUND SERVICES IN PILING AREA WHETHER SHOWN OR NOT. EXPOSE ALL SERVICES CLOSE TO PILING AS REQUIRED.
- PILES SHALL NOT BE MORE THAN 50mm OUT OF POSITION LATERALLY AT THE TOP AND NOT MORE THAN 2% OUT OF PLUMB.
- REINFORCE ALL PILES AS DETAILED ON THE DRAWINGS. REFER TO CONCRETE NOTES FOR CONCRETE REQUIREMENTS. INSTALL EACH PILE AS A CONTINUOUS POUR.
- VIBRATE TOP 4.5m OF CONCRETE IN ALL PILES.
- SLEEVING WHERE REQUIRED SHALL BE INCLUDED.

CONCRETE MIX DESIGNS:

CONCRETE MIX DESIGN SHALL BE PROPORTIONED TO MEET THE FOLLOWING PERFORMANCE REQUIREMENTS:
C.I.P. PILES:
EXPOSURE CLASS S-2
MIN. 56 DAY COMP. STRENGTH 32 MPa
CEMENT TYPE HS
MAX. W/C RATIO 0.45
MAX. AGGREGATE SIZE 20mm
ENTRAINED AIR CONTENT 4%-7%

EXTERIOR SLABS (NON-STRUCTURAL):
EXPOSURE CLASS C-2
MIN. 28 DAY COMP. STRENGTH 32 MPa
CEMENT TYPE C1
MAX. W/C RATIO 0.45
MAX. AGGREGATE SIZE 20mm
ENTRAINED AIR CONTENT 5%-8%

GROUT NOTE:

- GROUT REINFORCING DOWELS WITH EPOXY GROUT HLTI-HY200, OR APPROVED EQUAL IN ACCORDANCE WITH B7.
- GROUT BASE PLATES WITH NON-SHRINK GROUT SIKKA M-BED STANDARD, OR APPROVED EQUAL IN ACCORDANCE WITH B7.
- PLACE AND CURE ALL GROUT WITHIN TEMPERATURE RANGE RECOMMENDED BY MANUFACTURER.

No.	REVISION/DESCRIPTION	BY	DATE
0	ISSUED FOR TENDER	RG	18.03.09

PROF. DE MANITOBA
REGISTERED PROFESSIONAL ENGINEER
Member 24287
2018-03-09

DRAWN: FY
CHECKED: RG
DESIGNED: RL
APPROVED: RG

USER APPROVAL

THE CITY OF WINNIPEG
PLANNING, PROPERTY AND
DEVELOPMENT DEPARTMENT
MUNICIPAL ACCOMMODATIONS DIVISION
3-65 GARRY STREET, R3C 4K4

PROJECT
REPLACEMENT OF ROOF TOP UNITS
SERVING LAP POOL
AT PAN AM POOL
25 POSEIDON BAY

SHEET TITLE
STRUCTURAL
PLATFORM FRAMING
PLAN, SECTION & DETAILS

SCALE AS SHOWN	PROJECT No: 17-0107-023	SHEET No: S01
-------------------	----------------------------	------------------

