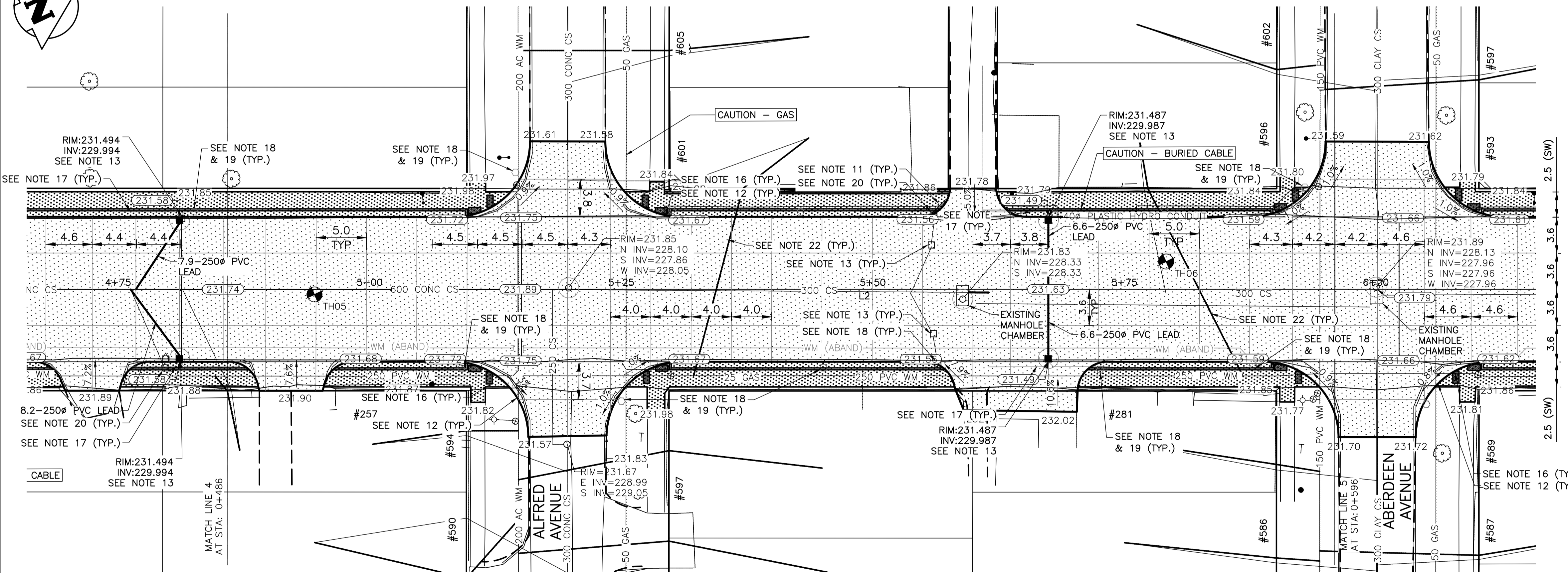
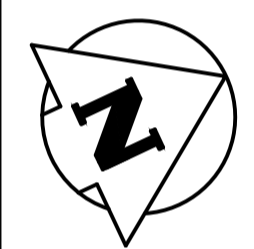
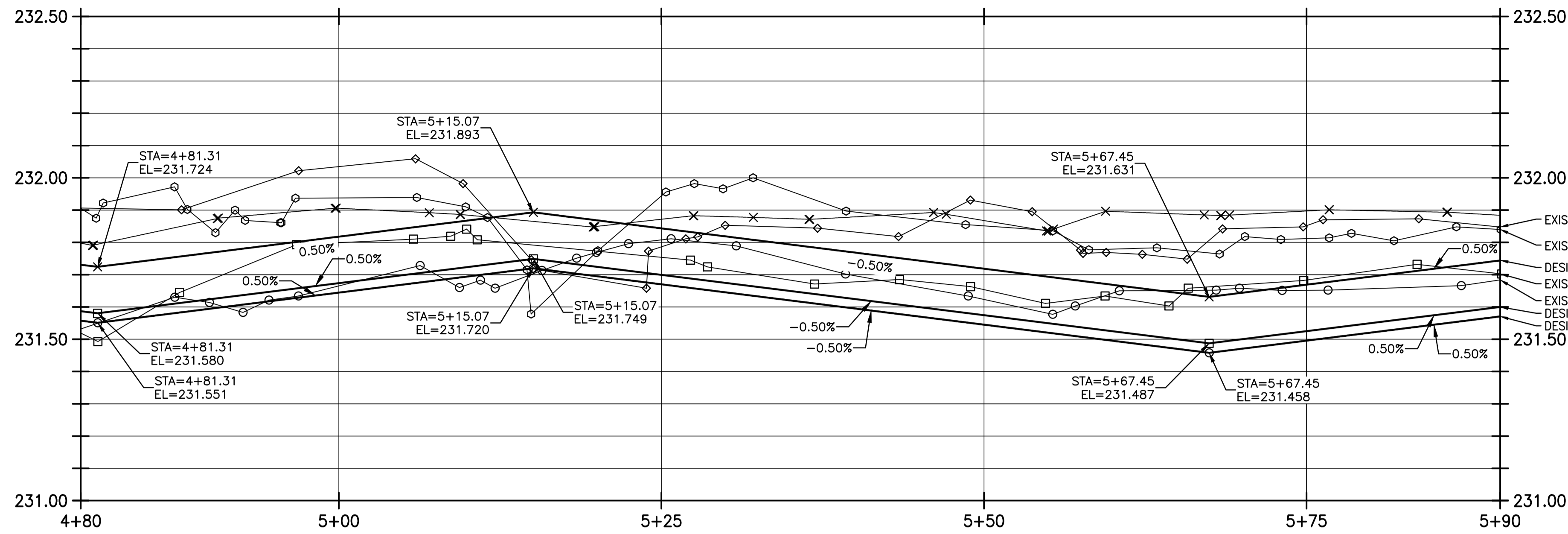
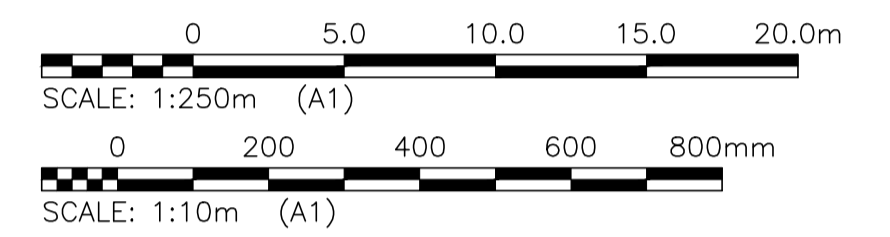


**NOTES:**

1. STATION IN CENTRE OF MCGREGOR RIGHT-OF-WAY UNLESS OTHERWISE NOTED.
2. BASELINE IS CENTRELINE OF MCGREGOR RIGHT-OF-WAY.
3. NORTH PROPERTY LINE OF SELKIRK AVENUE IS STA 1+00.0
4. ALL MEASUREMENTS TO BACK OF CURB.
5. ALL EXISTING TREES TO BE PROTECTED AND MAINTAINED THROUGHOUT CONSTRUCTION.
6. ALL BUS STOPS WITHIN LIMITS OF CONSTRUCTION TO BE TEMPORARILY RELOCATED BY OTHERS DURING WORKS.
7. HAND OR SOFT DIG METHODS REQUIRED OVER ALL UTILITIES AT INTERVALS DETERMINED BY THE ENGINEER TO DETERMINE DEPTH OF COVER.
8. NO WORKS, INCLUDING CONCRETE CUTTING OR BREAKING, TO BE UNDERTAKEN NEAR GAS LINES UNTIL DEPTH OF COVER IS DETERMINED AND A MB HYDRO SAFETY WATCH IS ON SITE.
9. ANY GAS MAINS OR SERVICES EXPOSED IN THE EXCAVATION AREA TO BE ROCK WRAPPED IN ACCORDANCE WITH MB HYDRO STANDARDS PRIOR TO WORK PROCEEDING ON SITE.
10. NO VIBRATORY COMPACTION PERMITTED WITHIN 1M OF GAS MAINS.
11. INSTALL MODIFIED BARRIER CURB AT ALL INTERSECTION RADII, ALLEY RADII, AND BULLNOSES.
12. CONSTRUCT NEW MONOLITHIC CURB RAMP (10mm HEIGHT INTEGRAL)
13. REMOVE EXISTING SD-024 CATCHBASIN AND INSTALL NEW BARRIER CURB AND GUTTER INLET FRAME (AP-008) AND INLET COVER (AP-008) AND 250 LEAD @ 2% MINIMUM GRADE.
14. TRANSVERSE JOINTS SPACED AT 5.0 INTERVALS UNLESS OTHERWISE NOTED.
15. ADJUST ALL WATER VALVES, MANHOLES AND CATCH BASINS TO GRADE.
16. INSTALL DETECTABLE WARNING SURFACE TILE (SD-229AB) IN ALL CORNERS OF STREET INTERSECTIONS.
17. INSTALL 6.0-150# SUBDRAIN (SD-245) BOTH SIDES OF ALL PROPOSED CATCHBASINS.
18. REMOVE EXISTING SIGN
19. INSTALL MOUNTING SLEEVE AT LOCATIONS INDICATED
20. REMOVE EXISTING CATCHBASIN AND ABANDON LEAD
21. APPROACH GRADES SHOWN REPRESENT AVERAGE SLOPES. CROSSFALL ACROSS SIDEWALK TRAVEL PATH TO BE 5% OR LESS.
22. INSULATE ALL WATERMANS AND SERVICES UNDER NEW PAVEMENT IN ACCORDANCE WITH SD-018.



LOCATIONS OF UNDERGROUND STRUCTURES AS SHOWN ARE BASED ON THE BEST INFORMATION AVAILABLE. BUT NO GUARANTEE IS GIVEN THAT ALL EXISTING UTILITIES ARE SHOWN OR THAT THE GIVEN LOCATIONS ARE EXACT. CONFIRMATION OF THE EXISTENCE AND EXACT LOCATION OF ALL SERVICES MUST BE OBTAINED FROM INDIVIDUAL UTILITIES BEFORE PROCEEDING WITH CONSTRUCTION.

**PROPERTY LIMITS DELINEATION**

DELINEATION OF PROPERTY LIMITS AS SHOWN ON THIS DWG DOES NOT REPRESENT A "LEGAL SURVEY". KGS GROUP MAKES NO REPRESENTATION OR WARRANTY AS TO THE ACCURACY OF PROPERTY LIMITS DELINEATED ON THIS DWG, NOR ON THE DIMENSIONAL ACCURACY OF DWG FEATURES RELATIVE TO THOSE PROPERTY LIMITS.

**WARNING**

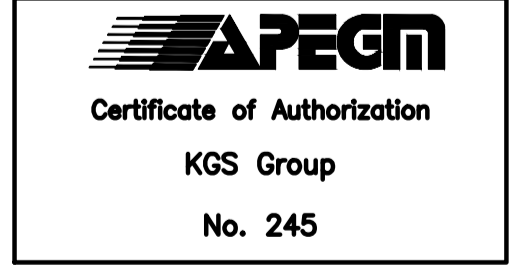
NOTIFY THE GAS COMPANY OF THE PROPOSED LOCATION OF EXCAVATION.

TAKE PRECAUTION TO AVOID DAMAGE TO GAS COMPANY INSTALLATIONS.

SEE PROVINCIAL REGULATION 210/72 FOR DETAILS.

**METRIC**

WHOLE NUMBERS INDICATE MILLIMETRES  
DECIMALIZED NUMBERS INDICATE METRES



300 LBS	LAND DRAINAGE SEWER	300 LBS							
250 WWS	WASTE WATER SEWER	250 WWS	TEST HOLE						
	GAS		GUY WIRE						
	HYDRO		LIGHT STANDARD						
	M.T.S.		BACK OF CURB						
150 WM	WATERMAIN	150 WM	CONCRETE						
	HYDRANT		ASPHALT						
	VALVE		SIDEWALK						
	MANHOLE		PROPERTY LINE						
	CATCH BASIN		SURVEY BAR						
	CURB INLET		GEODETIC BENCHMARK						
	POLES		ELEVATION						
EXISTING	LEGEND-PLAN	PROPOSED	EXISTING	LEGEND-PROFILE	PROPOSED	EXISTING	LEGEND-PROFILE	PROPOSED	

**LOCATION APPROVED UNDERGROUND STRUCTURES**

SUPV. U/G STRUCTURES COMMITTEE DATE

NOTE:  
LOCATION OF UNDERGROUND STRUCTURES AS SHOWN ARE BASED ON THE BEST INFORMATION AVAILABLE BUT NO GUARANTEE IS GIVEN THAT ALL EXISTING UTILITIES ARE SHOWN OR THAT THE GIVEN LOCATIONS ARE EXACT. CONFIRMATION OF EXISTENCE AND EXACT LOCATION OF ALL SERVICES MUST BE OBTAINED FROM THE INDIVIDUAL UTILITIES BEFORE PROCEEDING WITH CONSTRUCTION.

B.M. KGS_BASE	COORDINATE SYSTEM: CGVD28
ELEV. 249.213	
NO.	REVISIONS
A	ISSUED FOR TENDER 18/04/05

**KGS GROUP CONSULTING ENGINEERS**

DESIGNED BY: JB  
DRAWN BY: IT  
HOR. SCALE: 1:250  
VERTICAL: 1:10

CHECKED BY:  
APPROVED BY:  
RELEASED FOR CONSTRUCTION:

DATE: 2018/01/08

ENGINEER'S SEAL

CONSULTANT DRAWING NO. **C105**

**THE CITY OF WINNIPEG PUBLIC WORKS DEPARTMENT ENGINEERING DIVISION**

PROJECT TITLE: **2018 REGIONAL STREET PACKAGE**

SHEET 6 OF 13

COMPUTER FILE NAME: 17-0107-022\_CALL.DWG

CITY DRAWING NUMBER: P-3491-06

**McGREGOR STREET**

**PLAN AND PROFILE 04+80.00 TO 05+90.00**

\\K-FILE-A\PROJECTS\2017\17-0107-022\DWG\MUN\17-02078-008-04LL.DWG PLOT 1:1 (A-1)