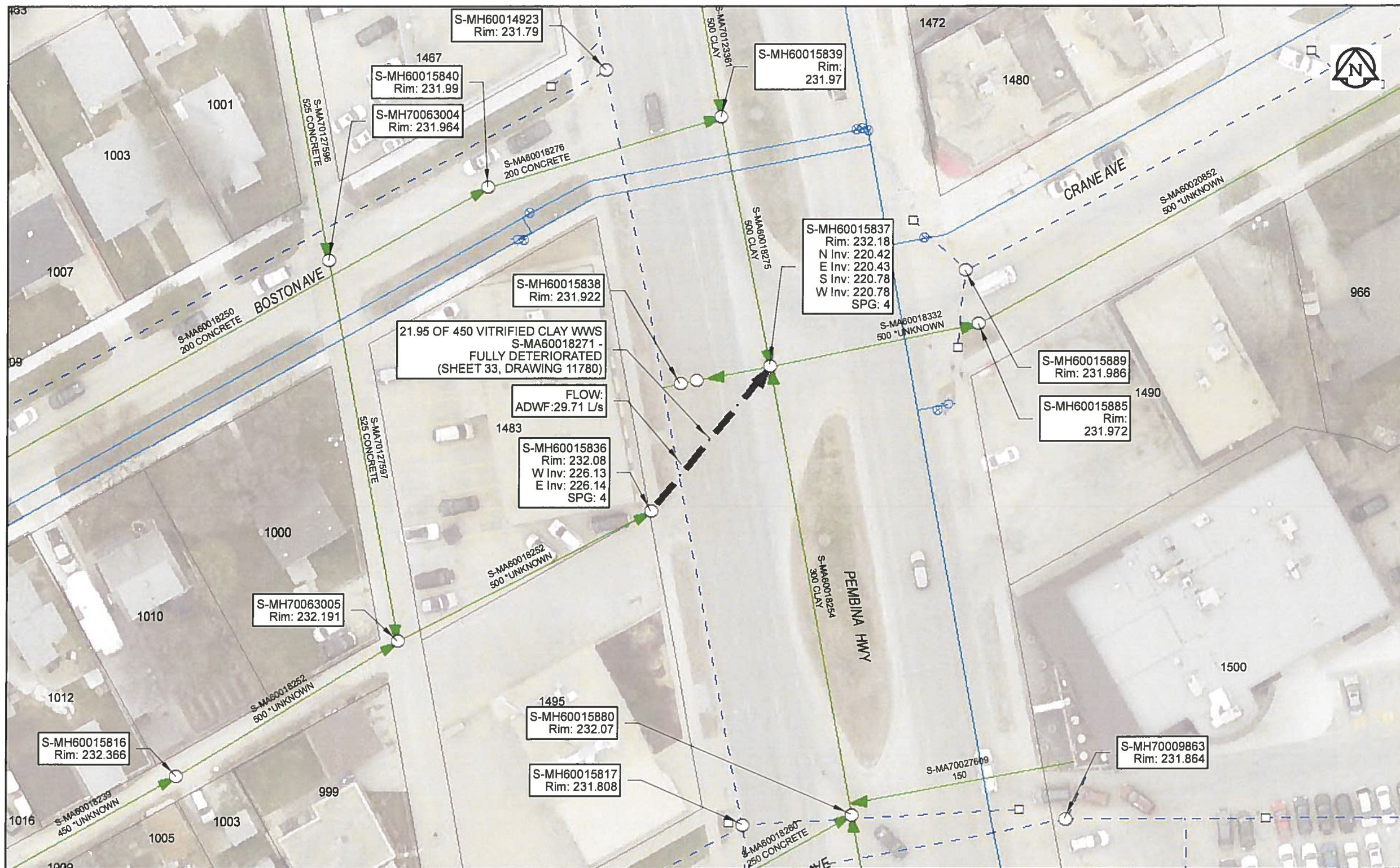


B SIZE 11" X 17" (279mm x 432mm)



Sewer Junction Information
(From Video Inspection)

Reference MH Distance Size Clock

Traffic Controls
Regional Street Lane Closure Required: Yes
Impacted Regional Street: Pembina HWY

General Requirements:
Maintain all NB and SB lanes on Pembina HWY during AM and PM weekday peak periods. Maintain minimum one lane of traffic in each direction at all times. Maintain access to local businesses.

WARNING
IF POWER EQUIPMENT OR EXPLOSIVES ARE TO BE USED FOR EXCAVATION ON THIS PROJECT, THE CONTRACTOR MUST:
1) NOTIFY THE GAS COMPANY OF THE PROPOSED LOCATION OF EXCAVATION
2) TAKE PRECAUTION TO AVOID DAMAGE TO GAS COMPANY INSTALLATIONS
SEE PROVINCIAL REGULATION 140/92 FOR DETAILS

APEGM
Certificate of Authorization
AECOM Canada Ltd.
No. 4671 Date: *May 24/18*

METRIC
WHOLE NUMBERS INDICATE MILLIMETRES
DECIMALIZED NUMBERS INDICATE METRES
0 2.5 5 10 15 20
Meters

RECORD DRAWING
BID OPPORTUNITY NO. 224-2018

AECOM REVIEW DRFT CHK

FILE NAME: 2017 Lining.mxd SAVED BY: ES

LOCATION APPROVED UNDERGROUND STRUCTURES

| SUPR. U/G STRUCTURES | DATE |
|----------------------|------|
| | |

NOTE:
LOCATION OF UNDERGROUND STRUCTURES AS SHOWN ARE BASED ON THE BEST INFORMATION AVAILABLE. BUT NO GUARANTEE IS GIVEN THAT ALL EXISTING UTILITIES ARE SHOWN OR THAT THE GIVEN LOCATIONS ARE EXACT. CONFIRMATION OF EXISTENCE AND EXACT LOCATION OF ALL SERVICES MUST BE OBTAINED FROM THE INDIVIDUAL UTILITIES BEFORE PROCEEDING WITH CONSTRUCTION.

| NO. | ISSUED FOR CONSTRUCTION | 18/05/24 | ES |
|-----|-------------------------|----------|----|
| | | | |

| NO. | REVISIONS | YY/MM/DD | BY |
|-----|-----------|----------|----|
| | | | |

AECOM

| | | | |
|-------------|-------|---------------------------|--------------------|
| DESIGNED BY | NK | CHECKED BY | <i>[Signature]</i> |
| DRAWN BY | ES | APPROVED BY | <i>[Signature]</i> |
| HOR. SCALE | 1:500 | RELEASED FOR CONSTRUCTION | <i>[Signature]</i> |
| VERT. SCALE | N/A | DATE | <i>May 24/18</i> |

PROFESSIONAL'S SEAL

PROVINCE OF MANITOBA
A.S. BRAUN
Member
24458
May 24/18
REGISTERED PROFESSIONAL ENGINEER

CONSULTANT DRAWING NO.
60561478-01-C-2017 Lining-ROX.mxd

THE CITY OF WINNIPEG
WATER AND WASTE DEPARTMENT

2017 SEWER RENEWALS
BY CIPP LINING
CONTRACT 4
S-MA60018271
LANE (BETWEEN BOSTON & ROYSE)
MH AT PEMBINA HWY (W.PL) TO MH AT PEMBINA HWY

| | | | |
|---------------------|-------|----|----|
| SHEET | 33 | OF | 59 |
| CITY DRAWING NUMBER | 11780 | | |
| REV | 0 | | |