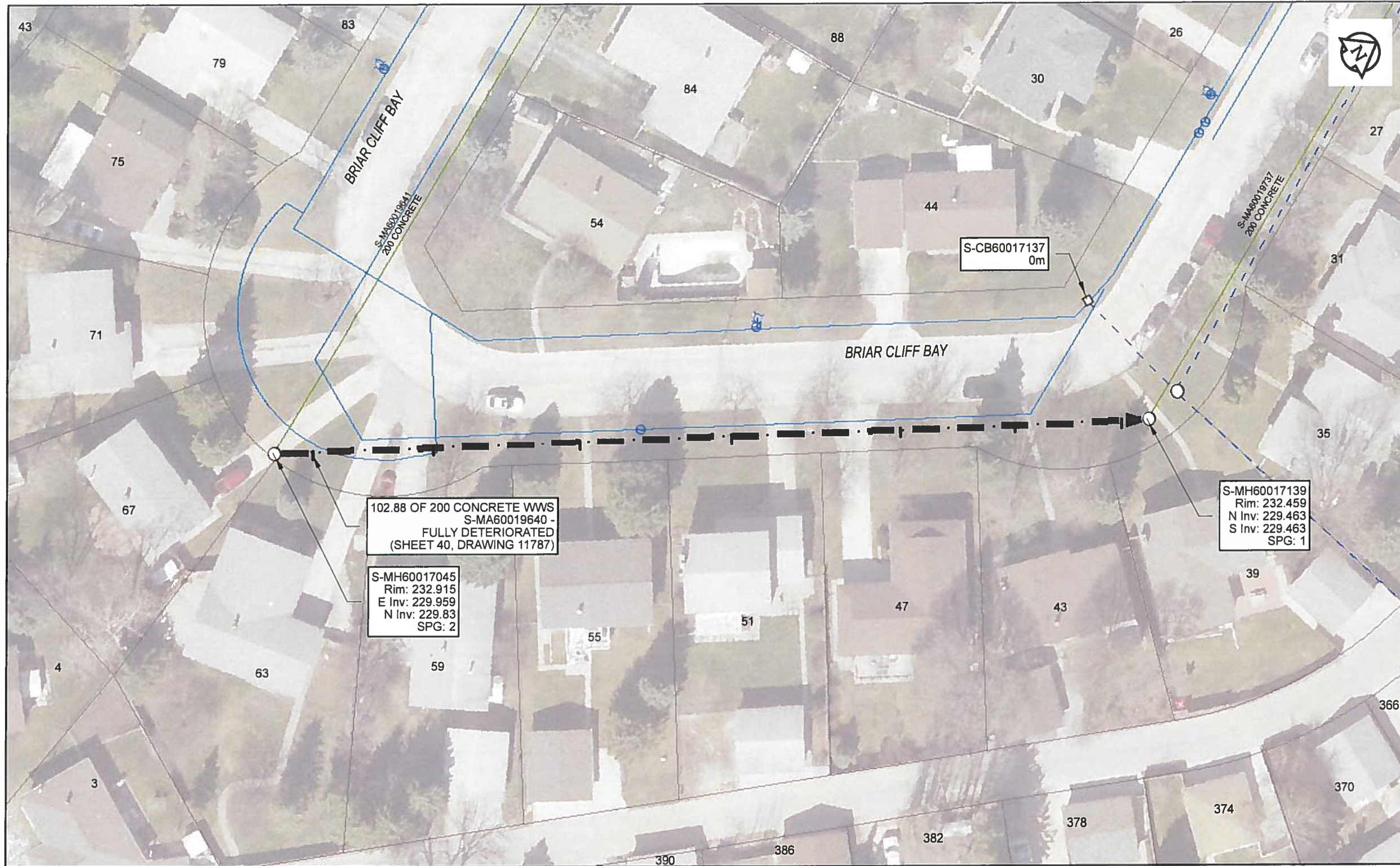


B SIZE 11" X 17" (279mm x 432mm)



Sewer Junction Information
(From Video Inspection)

Reference MH	Distance	Size	Clock
S-MH60017045	004.6	100	02
-	018.6	100	02
-	035.6	100	02
-	053.2	100	02
-	072.8	100	02
-	086.1	100	02
-	098.5	100	02

Traffic Controls

Regional Street Lane Closure Required. No Impacted Regional Street. N/A

General Requirements:

Residential Street Restrictions

WARNING

IF POWER EQUIPMENT OR EXPLOSIVES ARE TO BE USED FOR EXCAVATION ON THIS PROJECT, THE CONTRACTOR MUST:
 1) NOTIFY THE GAS COMPANY OF THE PROPOSED LOCATION OF EXCAVATION.
 2) TAKE PRECAUTION TO AVOID DAMAGE TO GAS COMPANY INSTALLATIONS.
 SEE PROVINCIAL REGULATION 140/92 FOR DETAILS



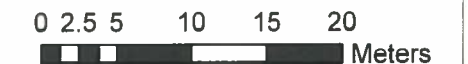
Certificate of Authorization

AECOM Canada Ltd.

No. 4671 Date: May 24/18

METRIC

WHOLE NUMBERS INDICATE MILLIMETRES
 DECIMALIZED NUMBERS INDICATE METRES



RECORD DRAWING

BID OPPORTUNITY NO. 224-2018

AECOM REVIEW DRAFT CHK

FILE NAME: 2017_Lining.mxd SAVED BY: ES

LOCATION APPROVED UNDERGROUND STRUCTURES

SUPR. U/G STRUCTURES DATE COMMITTEE
 NOTE:
 LOCATION OF UNDERGROUND STRUCTURES AS SHOWN ARE BASED ON THE BEST INFORMATION AVAILABLE. BUT NO GUARANTEE IS GIVEN THAT ALL EXISTING UTILITIES ARE SHOWN OR THAT THE GIVEN LOCATIONS ARE EXACT. CONFIRMATION OF EXISTENCE AND EXACT LOCATION OF ALL SERVICES MUST BE OBTAINED FROM THE INDIVIDUAL UTILITIES BEFORE PROCEEDING WITH CONSTRUCTION.

NO.	ISSUED FOR CONSTRUCTION	18/05/24	ES
0	ISSUED FOR CONSTRUCTION	18/05/24	ES
	REVISIONS	YY/MM/DD	BY



DESIGNED BY	NK	CHECKED BY	<i>Chris</i>
DRAWN BY	ES	APPROVED BY	<i>[Signature]</i>
HOR. SCALE	1:500	RELEASED FOR CONSTRUCTION	<i>[Signature]</i>
VERT. SCALE	N/A	DATE	<u>May 24/18</u>

PROFESSIONAL'S SEAL



CONSULTANT DRAWING NO.

60561478-01-C-2017 Lining-R0X.mxd



THE CITY OF WINNIPEG WATER AND WASTE DEPARTMENT

2017 SEWER RENEWALS BY CIPP LINING CONTRACT 4 S-MA60019640

BRIAR CLIFF BAY (S LEG)
 MH AT BRIAR CLIFF BAY (W LEG) TO MH AT BRIAR CLIFF BAY (E LEG)

SHEET 40 OF 59

CITY DRAWING NUMBER

11787 REV 0