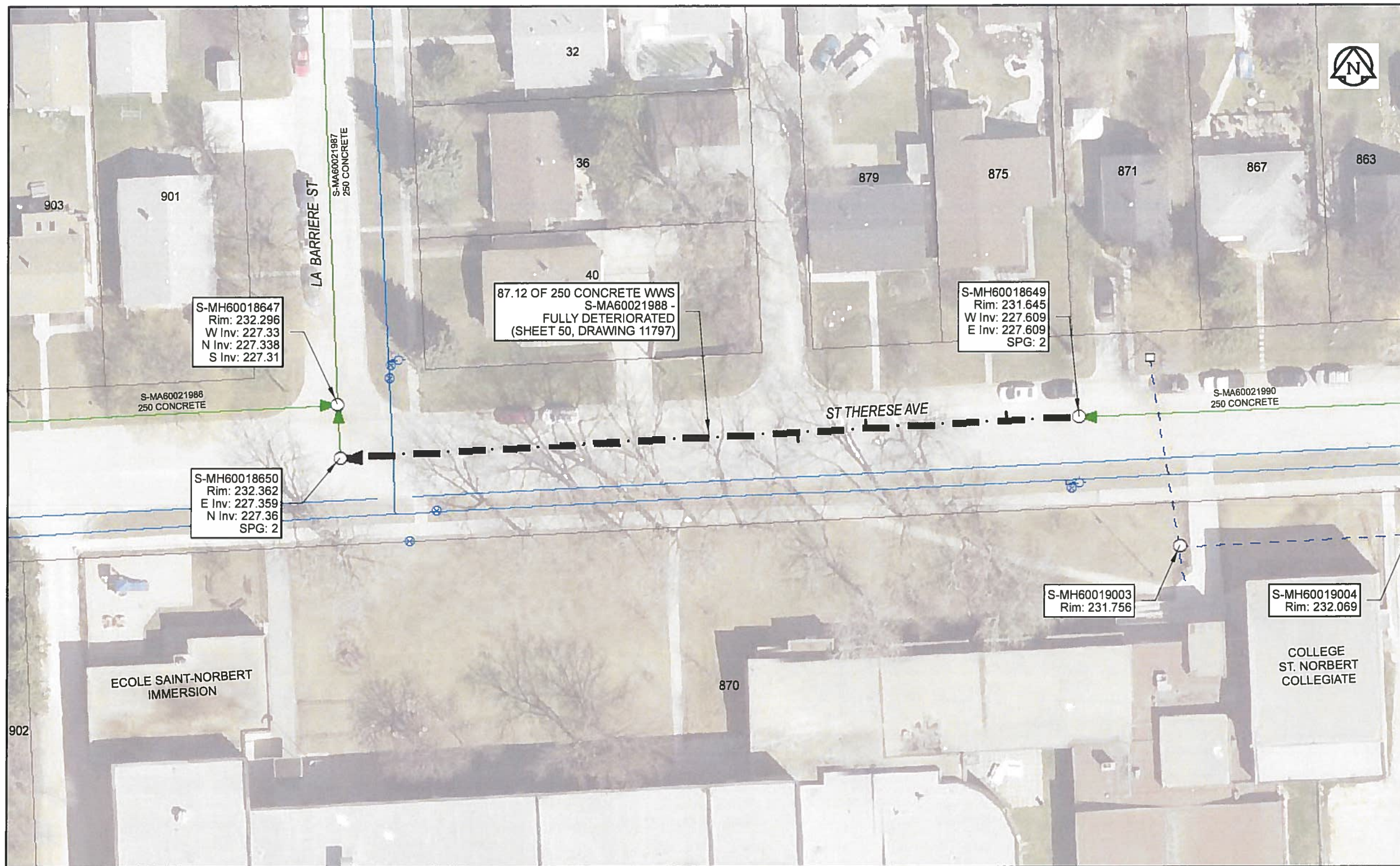


B SIZE 11" X 17" (279mm x 432mm)



Sewer Junction Information
(From Video Inspection)

Reference MH	Distance	Size	Clock
S-MH60018649	008.5	100	02
-	025.1	100	01
-	033.2	100	10

Traffic Controls
Regional Street Lane Closure Required: No
Impacted Regional Street: N/A

General Requirements:
Residential Street Restrictions. Maintain access to Ecole Saint-Norbert Immersion and College St. Norbert Collegiate.

WARNING
IF POWER EQUIPMENT OR EXPLOSIVES ARE TO BE USED FOR EXCAVATION ON THIS PROJECT, THE CONTRACTOR MUST:
1) NOTIFY THE GAS COMPANY OF THE PROPOSED LOCATION OF EXCAVATION
2) TAKE PRECAUTION TO AVOID DAMAGE TO GAS COMPANY INSTALLATIONS.
SEE PROVINCIAL REGULATION 140/92 FOR DETAILS

APEGM
Certificate of Authorization
AECOM Canada Ltd.
No. 4671 Date: *May 24/18*

METRIC
WHOLE NUMBERS INDICATE MILLIMETRES
DECIMALIZED NUMBERS INDICATE METRES
0 2.5 5 10 15 20
Meters

RECORD DRAWING
BID OPPORTUNITY NO. 224-2018

AECOM REVIEW DRAFT CHK

FILE NAME: 2017 Lining.mxd SAVED BY: ES

LOCATION APPROVED UNDERGROUND STRUCTURES

SUPR. U/G STRUCTURES	DATE

NOTE:
LOCATION OF UNDERGROUND STRUCTURES AS SHOWN ARE BASED ON THE BEST INFORMATION AVAILABLE. BUT NO GUARANTEE IS GIVEN THAT ALL EXISTING UTILITIES ARE SHOWN OR THAT THE GIVEN LOCATIONS ARE EXACT. CONFIRMATION OF EXISTENCE AND EXACT LOCATION OF ALL SERVICES MUST BE OBTAINED FROM THE INDIVIDUAL UTILITIES BEFORE PROCEEDING WITH CONSTRUCTION.

NO.	ISSUED FOR CONSTRUCTION	18/05/24	ES

AECOM

DESIGNED BY	NK	CHECKED BY	<i>[Signature]</i>
DRAWN BY	ES	APPROVED BY	<i>[Signature]</i>
HOR. SCALE	1: 500	RELEASED FOR CONSTRUCTION	<i>[Signature]</i>
VERT. SCALE	N/A	DATE	<i>May 24/18</i>

PROFESSIONAL'S SEAL

CONSULTANT DRAWING NO.
60561478-01-C-2017 Lining-ROX.mxd

THE CITY OF WINNIPEG
WATER AND WASTE DEPARTMENT

2017 SEWER RENEWALS
BY CIPP LINING
CONTRACT 4
S-MA60021988
ST THERESE AVE
3RD MH W OF ST PIERRE ST TO MH AT LA BARRIERE ST

SHEET	50	OF	59
CITY DRAWING NUMBER	11797		
REV	0		