

- LEGEND**
- CIRCUIT BREAKER
 - SOFT STARTER WITH BYPASS CONTACTOR
 - N.C. PUSHBUTTON
 - N.O. PUSHBUTTON
 - LAMP
 - SELECTOR SWITCH
 - RELAY COIL
 - HRM
 - DISCONNECT SWITCH

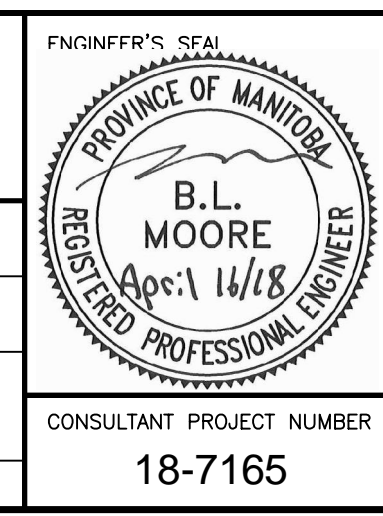
- NOTES**
1. CONNECT ALL EXISTING INTERFACE SIGNALS BETWEEN MOTOR STARTER AND BMS.
 2. CONNECT CONTROL SIGNALS TO MAIN DRAW VALVE FOR SHUT DOWN ON PUMP NOT RUNNING STATUS.

CONTROL SCHEMATIC
N.T.S.

C:\projects\working_directory\projects_2018\408k\dms\99528\18-7165-E-103.dwg



DESIGNED BY	BLM	CHECKED BY	
DRAWN BY	SCK	APPROVED BY	
HR. SCALE	NTS	RELEASED FOR CONSTRUCTION	
NO. REVISIONS	DATE	BY	DATE
B	ISSUED FOR BID OP 247-2018	18/04/16	BLM
A	ISSUED FOR 50% CLIENT REVIEW	18-03-16	BLM
		18-03-16	



THE CITY OF WINNIPEG
PUBLIC WORKS DEPARTMENT

PAN AM POOL
PUMP REPLACEMENTELECTRICAL
CONTROL SCHEMATIC

CONSULTANT PROJECT NUMBER
18-7165

CITY DRAWING NUMBER
247-2018_DRAWING_E-103-R0.PDF
SHEET **5** OF **5**
CONSULTANT DRAWING NUMBER
E-103