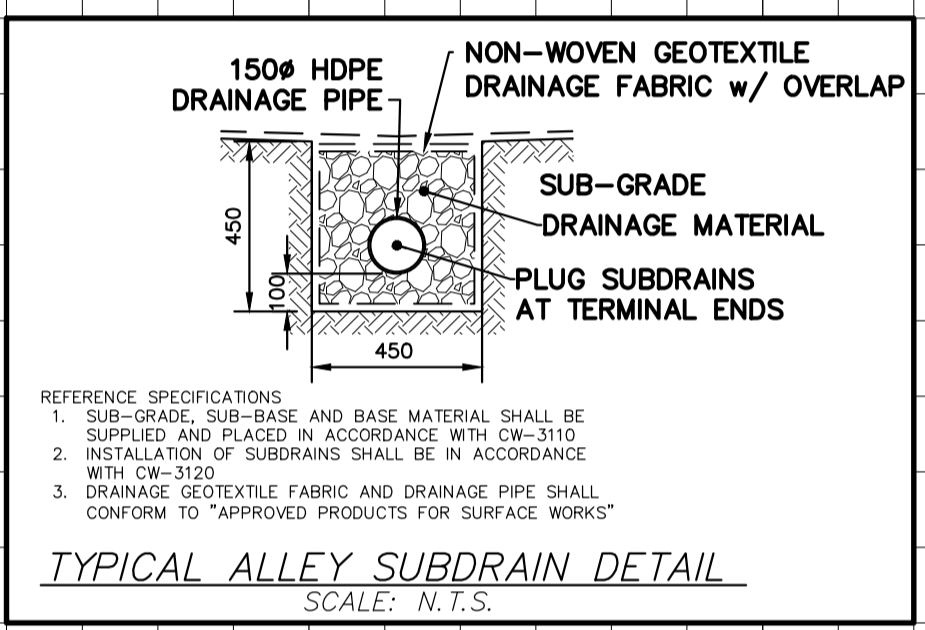
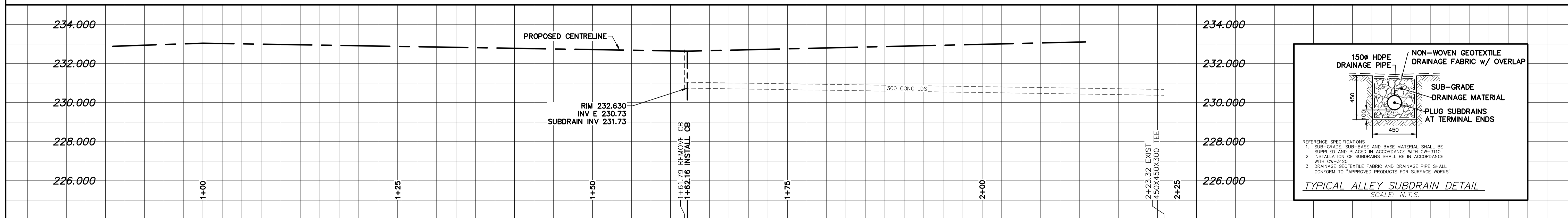


- NOTES:**
1. ALL WORK AND MATERIALS TO BE IN ACCORDANCE WITH THE LATEST REVISION OF THE CITY OF WINNIPEG STANDARD CONSTRUCTION SPECIFICATION.
  2. CONTRACTOR TO CONFIRM THE LOCATION OF ALL UTILITIES/SERVICES IN THE FIELD PRIOR TO CONSTRUCTION.
  3. CONTRACTOR TO AVOID DAMAGE TO EXISTING TREES WITHIN THE LIMITS OF THE ALLEY RIGHT OF WAY AS OUTLINED IN THE BID OPPORTUNITY.
  4. HYDRO POLES AND ANCHORS REQUIRING TEMPORARY SUPPORT TO BE DONE AT THE EXPENSE OF THE CONTRACTOR AS REQUIRED.
  5. WHERE UNSTABLE SUB-GRADES ARE ENCOUNTERED, ADDITIONAL EXCAVATION/SUB-BASE AND INSTALLATION OF GEOTRID TO BE DETERMINED BY THE CONTRACT ADMINISTRATOR AND CONSTRUCTED IN ACCORDANCE W/ CW-3110.
  6. PROPOSED ELEVATIONS GIVEN ARE FOR EDGE OF PAVEMENT.
  7. ISOLATE EXISTING HYDRO POLES AS PER SD-228C.
  8. RENEW CURB AND SIDEWALK AS DIRECTED BY THE CONTRACT ADMINISTRATOR.
  9. MODIFIED BARRIER CURBS TO BE CONSTRUCTED AT ALL BACK LANE RADI.
  10. ALL EXISTING PRIVATE APPROACHES TO BE RENEWED AS DIRECTED BY THE CONTRACT ADMINISTRATOR.
  11. ADJUSTMENTS TO PROPOSED CROSSFALL, WHERE REQUIRED, ARE TO BE DETERMINED BY THE CONTRACT ADMINISTRATOR TO SUIT EXISTING DRIVEWAYS, APPROACHES, ETC.
  12. ALL BOULEVARD RESTORATION TO BE SOODED OTHERWISE NOTED.
  13. INSTALLATION OF LIP CURBS AND THEIR LIMITS THROUGH PRIVATE APPROACHES TO BE DETERMINED BY THE CONTRACT ADMINISTRATOR.
  14. REMOVE, ADJUST, AND SUPPLY PRECAST SIDEWALK BLOCKS AS DIRECTED BY THE CONTRACT ADMINISTRATOR.

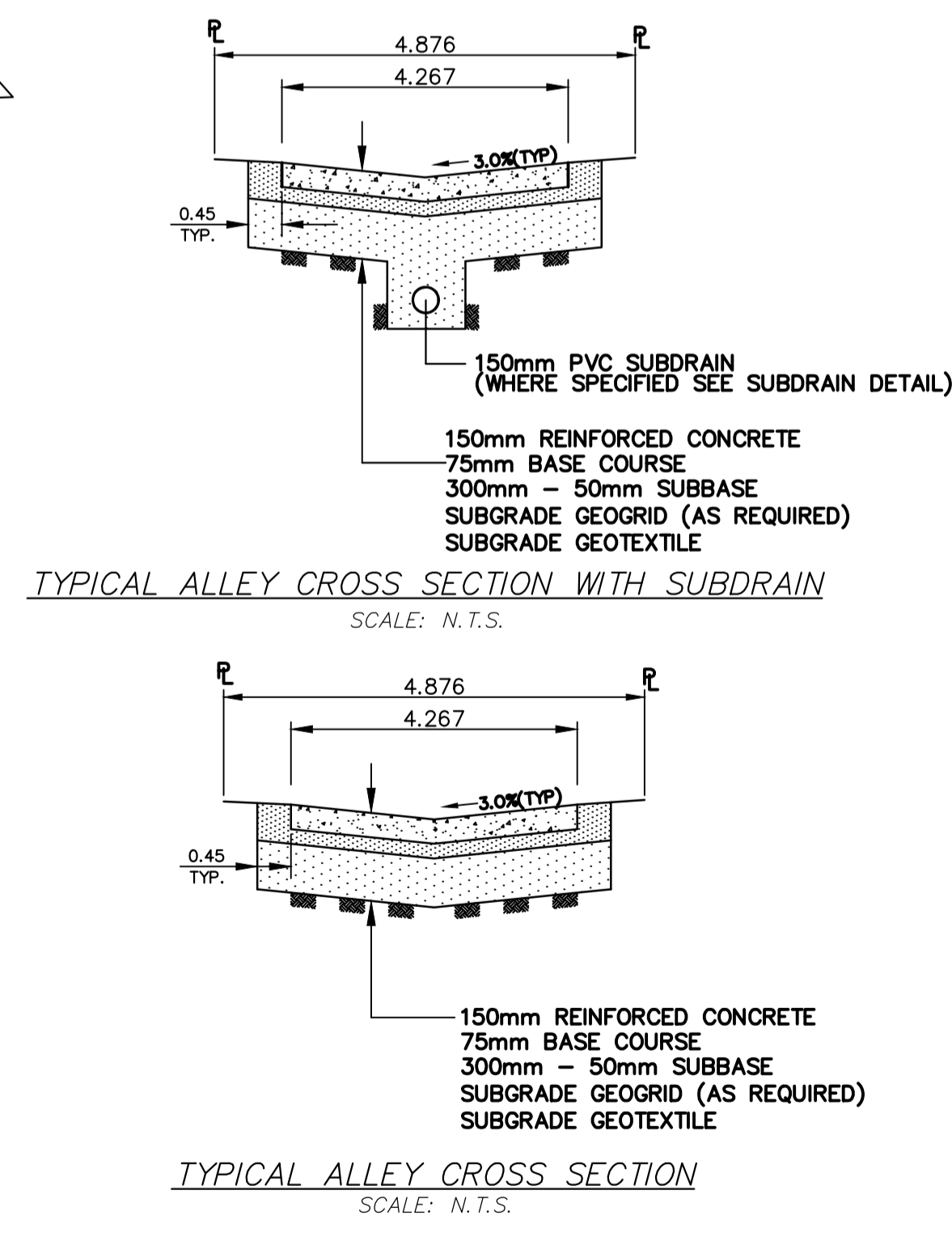
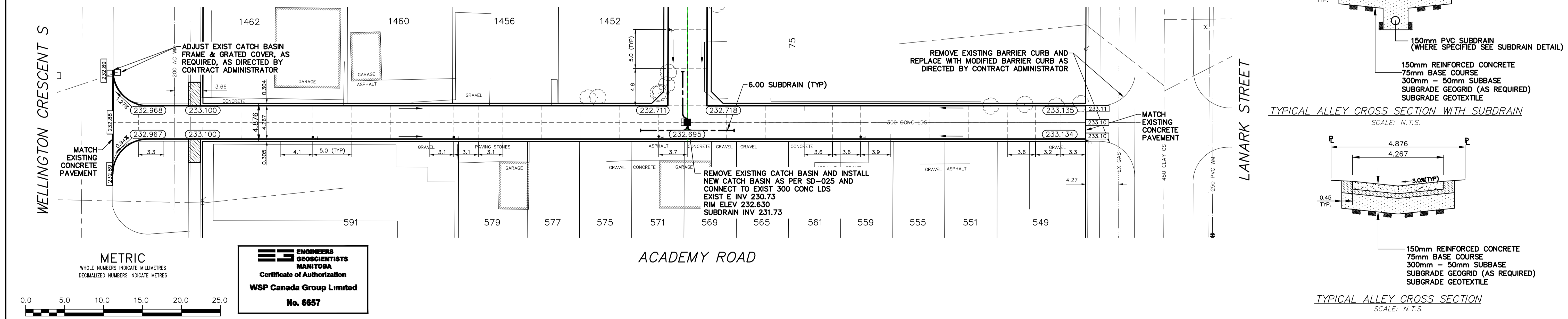
**LANE PAVEMENT PROFILE**  
SCALE: 1:250 HOR  
1:10 VER



**LAND DRAINAGE SEWER PROFILE**  
SCALE: 1:250 HOR  
1:100 VER

NOTE: CHAINAGES SHOWN ARE ALONG CL OF RIGHT-OF-WAY

FOR CONTINUATION SEE DWG 17M-02283-00-16



|   |  |  |  |   |  |   |  |                       |  |   |  |   |  |  |  |   |  |   |  |
|---|--|--|--|---|--|---|--|-----------------------|--|---|--|---|--|--|--|---|--|---|--|
| <p><b>WATERMAIN</b></p> <p>HYDRANT</p> <p>VALVE</p> <p>CURB STOP</p> <p>LAND DRAINAGE SEWER</p> <p>WASTE WATER SEWER</p> <p>CB LEAD</p> <p>MANHOLE</p> <p>CATCH BASIN</p> <p>GAS</p> <p>HYDRO</p> |  | <p><b>M.T.S.</b></p> <p>CONCRETE/ASPHALT</p> <p>SIDEWALK</p> <p>CURB RAMP</p> <p>ELEVATIONS</p> <p>PROPERTY LINE</p> <p>SURVEY BAR</p> <p>HYDRO POLE</p> <p>STREET LIGHT</p> <p>JOINTS</p> <p>ASPHALT REPAIR</p> |  | <p><b>150 MM</b></p> <p>VALVE</p> <p>LAND DRAINAGE SEWER</p> <p>WASTE WATER SEWER</p> <p>CENTERLINE</p> <p>SOUTH &amp; EAST GUTTER</p> <p>NORTH &amp; WEST GUTTER</p> <p>S &amp; E GARAGE PAD</p> <p>N &amp; W GARAGE PAD</p> |  | <p><b>300 LDS</b></p> <p><b>250 WWS</b></p> |  | <p><b>250 WWS</b></p> |  | <p>LOCATION APPROVED UNDERGROUND STRUCTURES</p> <p>DATE</p> <p>NOTE:</p> <p>LOCATION OF UNDERGROUND STRUCTURES AS SHOWN ARE BASED ON THE BEST INFORMATION AVAILABLE BUT NO GUARANTEE IS GIVEN THAT ALL EXISTING UTILITIES ARE SHOWN OR THAT THE GIVEN LOCATIONS ARE EXACT. CONFIRMATION OF EXISTENCE AND EXACT LOCATION OF ALL SERVICES MUST BE OBTAINED FROM THE INDIVIDUAL UTILITIES BEFORE PROCEEDING WITH CONSTRUCTION.</p> |  | <p>B.M. ELEV.</p> <p>DESIGNED BY: K.G.</p> <p>CHECKED BY: R.H.</p> <p>DRAWN BY: K.G.</p> <p>APPROVED BY: S.M.</p> <p>HOR. SCALE: 1:250</p> <p>VERT. SCALE: 1:25</p> <p>RELEASSED FOR CONSTRUCTION</p> |  | <p><b>wsp</b></p> <p>111-93 Lombard Avenue<br/>Winnipeg, Manitoba<br/>R3B 3B1 Canada<br/>Phone: 204-943-3178<br/>Fax: 204-943-4948<br/>wsp.com</p> |  | <p>NOT FOR CONSTRUCTION</p> <p>CONSULTANT DRAWING NO. 17M-02283-00-15</p> |  | <p><b>THE CITY OF WINNIPEG</b></p> <p>PUBLIC WORKS DEPARTMENT</p> <p>2018 ALLEY RENEWALS<br/>ACADEMY ROAD ALLEY<br/>FROM WELLINGTON CRESCENT SOUTH TO LANARK STREET</p> <p>CITY DRAWING NO. SHEET 1 OF 2</p> <p>BID OPPORTUNITY 27-2018</p> |  |
|---|--|--|--|---|--|---|--|-----------------------|--|---|--|---|--|--|--|---|--|---|--|