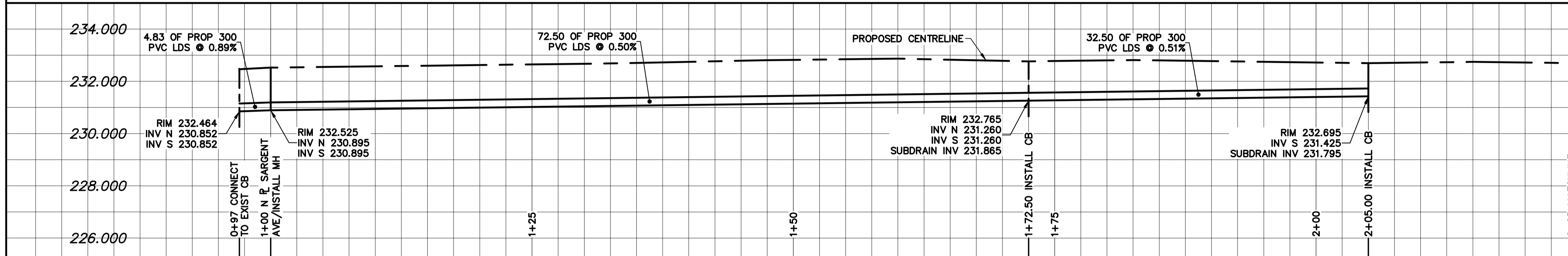
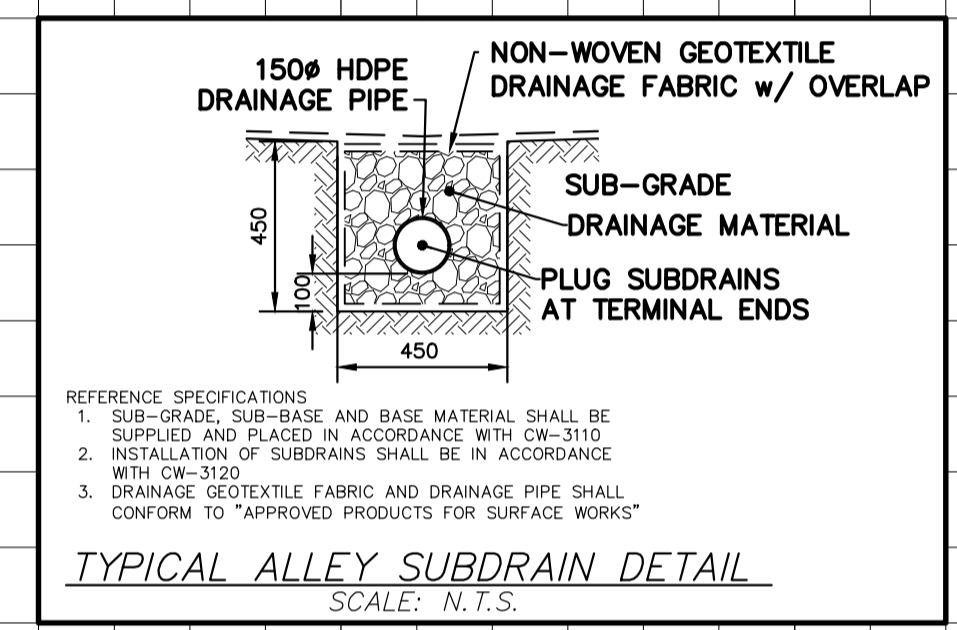


ALLEY PAVEMENT PROFILE
SCALE: 1:250 HOR
1:10 VER

- NOTES:**
1. ALL WORK AND MATERIALS TO BE IN ACCORDANCE WITH THE LATEST REVISION OF THE CITY OF WINNIPEG STANDARD CONSTRUCTION SPECIFICATION.
 2. CONTRACTOR TO CONFIRM THE LOCATION OF ALL UTILITIES/SERVICES IN THE FIELD PRIOR TO CONSTRUCTION.
 3. CONTRACTOR TO AVOID DAMAGE TO EXISTING TREES WITHIN THE LIMITS OF THE ALLEY RIGHT OF WAY AS OUTLINED IN THE BID OPPORTUNITY.
 4. HYDRO POLES AND ANCHORS REQUIRING TEMPORARY SUPPORT TO BE DONE AT THE EXPENSE OF THE CONTRACTOR AS REQUIRED.
 5. WHERE UNSTABLE SUB-GRADES ARE ENCOUNTERED, ADDITIONAL EXCAVATION/SUB-BASE AND INSTALLATION OF GEOTEXTILE TO BE DETERMINED BY THE CONTRACT ADMINISTRATOR AND CONSTRUCTED IN ACCORDANCE W/ CW-3110.
 6. PROPOSED ELEVATIONS GIVEN ARE FOR EDGE OF PAVEMENT.
 7. ISOLATE EXISTING HYDRO POLES AS PER SD-228C.
 8. RENEW CURB AND SIDEWALK AS DIRECTED BY THE CONTRACT ADMINISTRATOR.
 9. MODIFIED BARRIER CURBS TO BE CONSTRUCTED AT ALL BACK LANE RADII.
 10. ALL EXISTING PRIVATE APPROACHES TO BE RENEWED AS DIRECTED BY THE CONTRACT ADMINISTRATOR.
 11. ADJUSTMENTS TO PROPOSED CROSSFALL, WHERE REQUIRED, ARE TO BE DETERMINED BY THE CONTRACT ADMINISTRATOR TO SUIT EXISTING DRIVEWAYS, APPROACHES, ETC.
 12. ALL BOULEVARD RESTORATION TO BE SODDED UNLESS OTHERWISE NOTED.
 13. INSTALLATION OF LIP CURBS AND THEIR LIMITS THROUGH PRIVATE APPROACHES TO BE DETERMINED BY THE CONTRACT ADMINISTRATOR.
 14. REMOVE, ADJUST, AND SUPPLY PRECAST SIDEWALK BLOCKS AS DIRECTED BY THE CONTRACT ADMINISTRATOR.



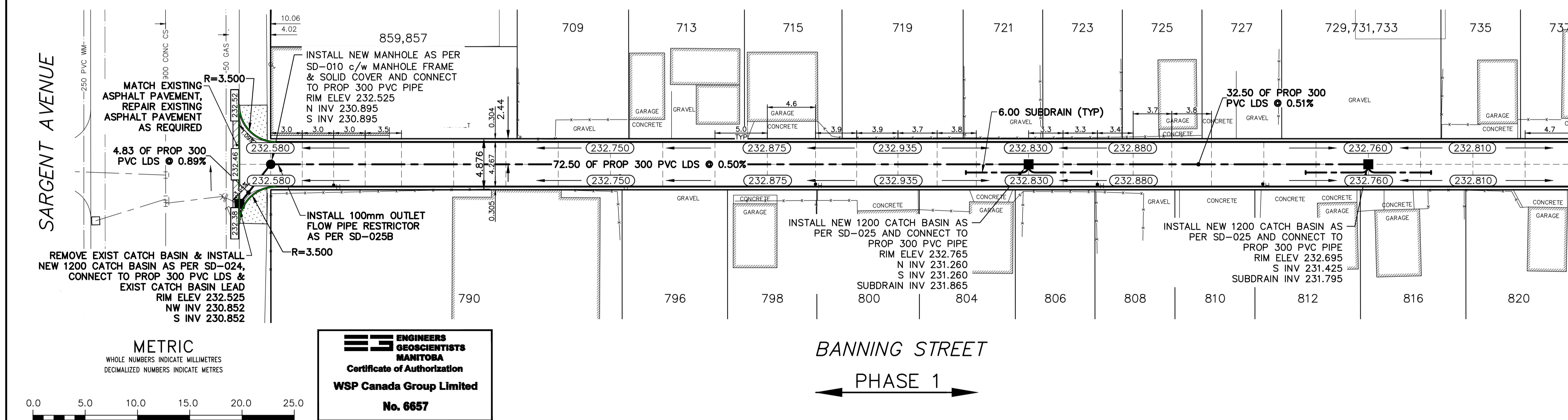
LAND DRAINAGE SEWER PROFILE
SCALE: 1:250 HOR
1:100 VER



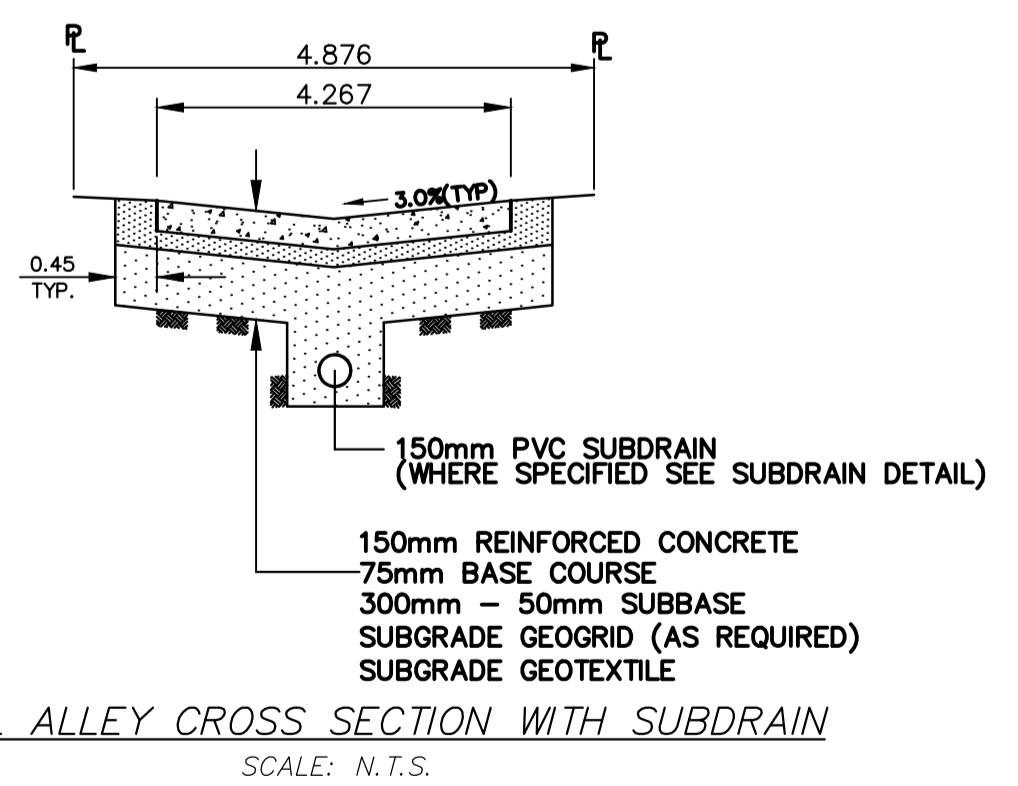
NOTE: CHAINAGES SHOWN ARE ALONG ☉ OF RIGHT-OF-WAY

THERE SHALL BE NO INCREASE IN CUMULATIVE PEAK FLOW ENTERING CS AND/OR SRS SYSTEMS AS A RESULT OF CONSTRUCTION WORKS SHOWN.

LIPTON STREET



TYPICAL ALLEY CROSS SECTION
SCALE: N.T.S.



BANNING STREET
PHASE 1

METRIC
WHOLE NUMBERS INDICATE MILLIMETRES
DECIMALIZED NUMBERS INDICATE METRES

WATERMAIN	CONCRETE/ASPHALT	150 MM
HYDRANT	SIDEWALK	300 LDS
VALVE	CURB RAMP	250 WWS
CURB STOP	ELEVATIONS	(232.00)
LAND DRAINAGE SEWER	PROPERTY LINE	
WASTE WATER SEWER	SURVEY BAR	
CB LEAD	HYDRO POLE	
MANHOLE	STREET LIGHT	
CATCH BASIN	JOINTS	
GAS	ASPHALT REPAIR	
HYDRO		
EXISTING	LEGEND - PLAN	PROPOSED

**ENGINEERS
GEOSCIENTISTS
MANITOBA**
Certificate of Authorization
WSP Canada Group Limited
No. 6657

LOCATION APPROVED UNDERGROUND STRUCTURES

WATERMAIN	VALVE	150 MM
LAND DRAINAGE SEWER	WASTE WATER SEWER	300 LDS
CENTERLINE	SOUTH & EAST GUTTER	250 WWS
NORTH & WEST GUTTER	S & E GARAGE PAD	
N & W GARAGE PAD		

NOTE:
LOCATION OF UNDERGROUND STRUCTURES AS SHOWN ARE BASED ON THE BEST INFORMATION AVAILABLE BUT NO GUARANTEE IS GIVEN THAT ALL EXISTING UTILITIES ARE SHOWN OR THAT THE GIVEN LOCATIONS ARE EXACT. CONFIRMATION OF EXISTENCE AND EXACT LOCATION OF ALL SERVICES MUST BE OBTAINED FROM THE INDIVIDUAL UTILITIES BEFORE PROCEEDING WITH CONSTRUCTION.

DESIGNED BY	K.G.	CHECKED BY	R.H.
DRAWN BY	D.R./K.G.	APPROVED BY	S.M.
HOR. SCALE:	1:250	RELEASED FOR CONSTRUCTION	
VERT. SCALE:	AS SHOWN		
DATE	JANUARY 2018		

wsp
111-93 Lombard Avenue
Winnipeg, Manitoba
R3B 3B1 Canada
Phone: 204-943-3178
Fax: 204-943-4948
wsp.com

NOT FOR CONSTRUCTION
CONSULTANT DRAWING NO.
17M-02283-00-24

THE CITY OF WINNIPEG
PUBLIC WORKS DEPARTMENT

2018 ALLEY RENEWALS
LIPTON STREET / BANNING STREET ALLEY
FROM SARGENT AVENUE TO STA 2+25
CONCRETE PAVEMENT

CITY DRAWING NO.
SHEET 1 OF 3
BID OPPORTUNITY
28-2018