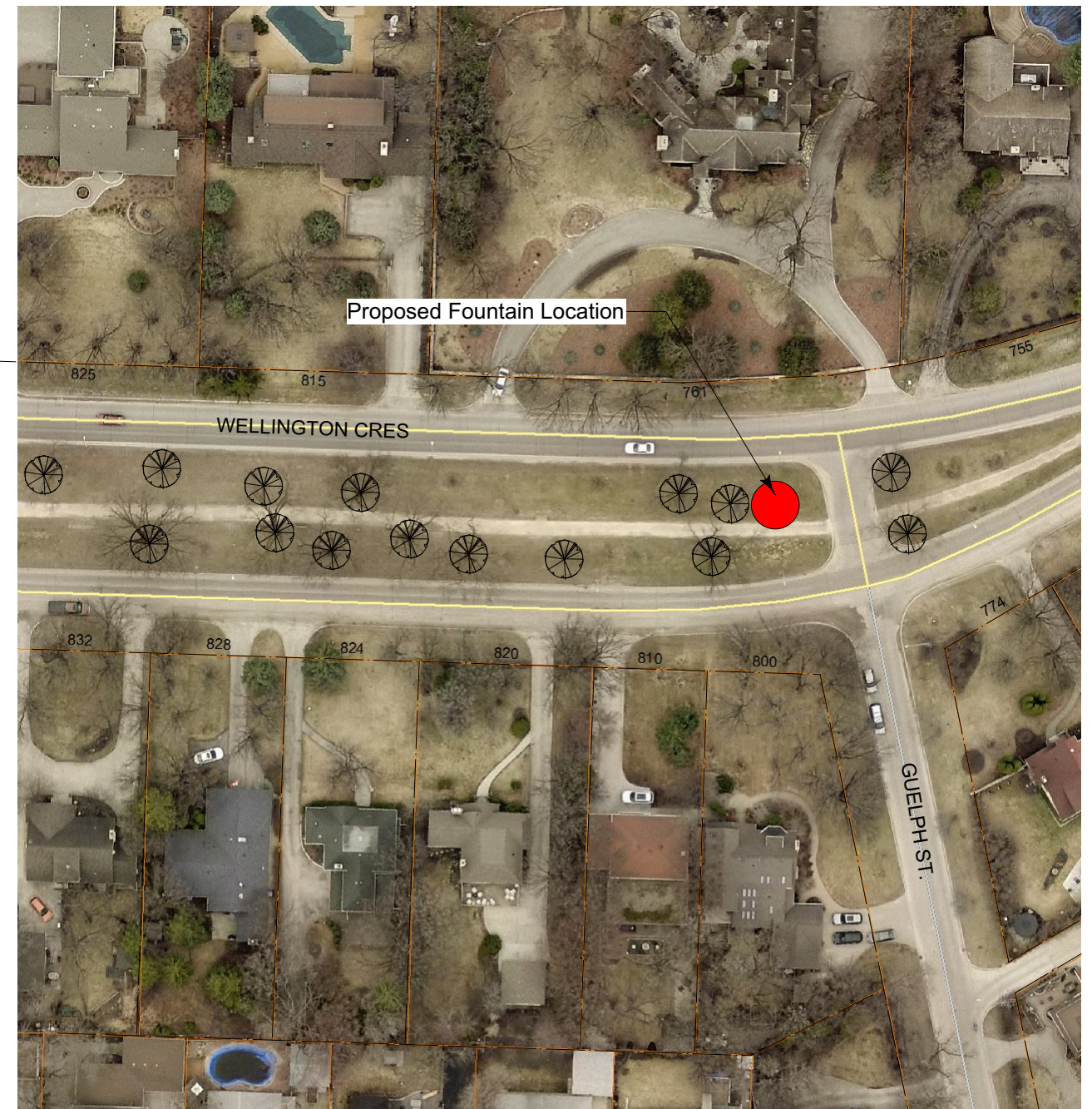




Fountain Location - Lanark Site



Fountain Location - Guelph Site



THE CITY OF WINNIPEG
 Planning, Property and Development Dept.
 Planning and Land Use Division
 15-30 Fort Street, Winnipeg, MB, (R3C 4X5)

DESIGNED BY	CH	CHECKED BY	APPROVED BY
DRAWN BY	CH	RELEASED FOR CONSTRUCTION	
HORIZ. SCALE	1 : 1000		
VERT. SCALE			
DATE	May/18	MANAGER, PLANNING AND LAND USE DIVISION	DATE

DRAWING TITLE
**WELLINGTON CRES. WATER FOUNTAINS
 Location Plans**

CAD DRAWING NO.

DRAWING NO.

W.60-A