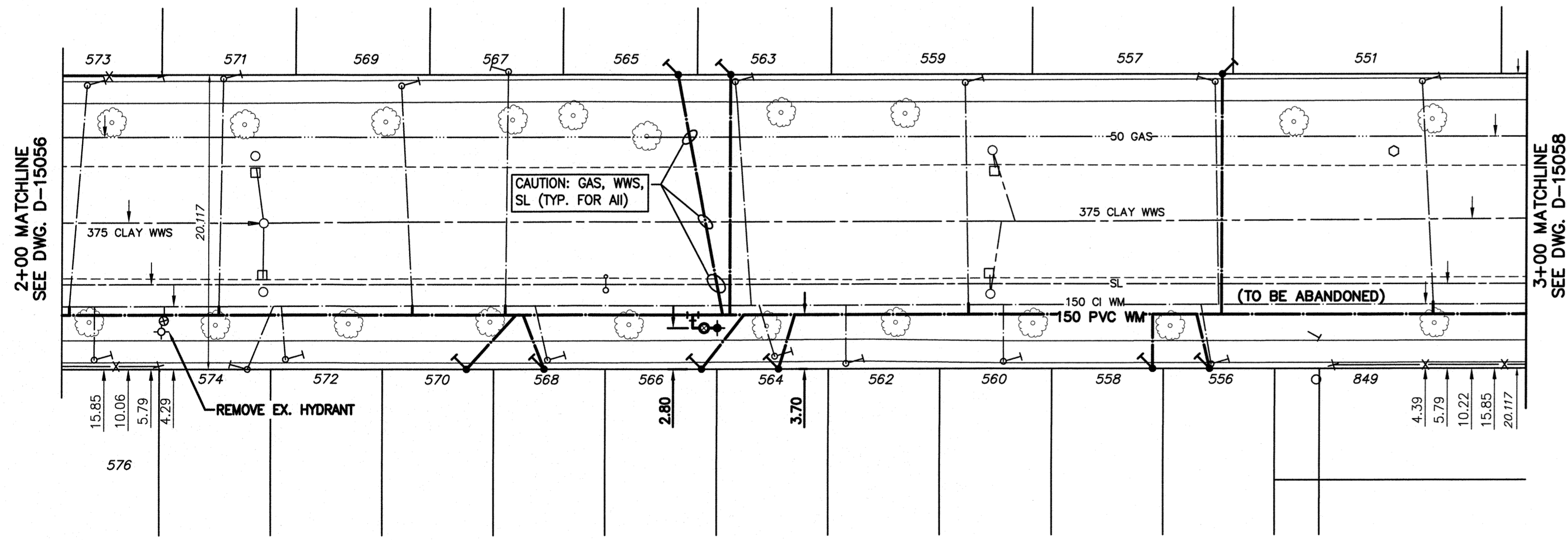


NOTE: CHAINAGES SHOWN ARE ALONG ϕ OF BERESFORD AVENUE

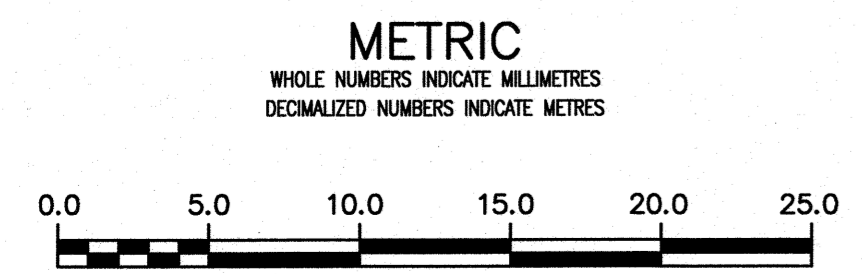
BERESFORD AVENUE



WATER SERVICE INFORMATION

ADDRESS	PIPE SIZE & MATERIAL (STREET)	PIPE SIZE & MATERIAL (PROP.)	SHORT & LONG MEASUREMENT	CORP. LOCATION	REMARKS
547 BERESFORD AVE RESIDENTIAL	-	-	-	-	RECONNECT SERVICE
551 BERESFORD AVE RESIDENTIAL	20 COPPER	12 COPPER	1.22 EEL HSE 20.73 WML NASSAU	19.82 WML NASSAU	RECONNECT SERVICE
556 BERESFORD AVE RESIDENTIAL	-	-	3.35 EWL HOUSE 35.37 WML NASSAU	35.67 WML NASSAU	RENEW TO PL W/ 20 CU WYED W/ 588 (SEPARATE SERVICES)
557 BERESFORD AVE RESIDENTIAL	20 LEAD	20 LEAD	1.83 EEL HSE 34.45 WML NASSAU	OPP S/C	RENEW TO PL W/ 20 CU
558 BERESFORD AVE RESIDENTIAL	-	-	3.05 EWL OF 558 35.37 WML NASSAU	35.67 WML NASSAU	RENEW TO PL W/ 20 CU WYED W/ 588 (SEPARATE SERVICES)
559 BERESFORD AVE RESIDENTIAL	20 COPPER	20 COPPER	0.91 EEL HSE 51.83 WML NASSAU	0.3 E S/C	RECONNECT SERVICE
560 BERESFORD AVE RESIDENTIAL	-	-	-	-	RECONNECT SERVICE
562 BERESFORD AVE RESIDENTIAL	20 COPPER	20 COPPER	3.66 EWL OF 560 49.39 WML NASSAU	0.61 W OF S/C	RECONNECT SERVICE
563 BERESFORD AVE RESIDENTIAL	-	-	2.74 EWL 39.33 E 1ST HYD W NASSAU	0.3 E S/C 563	RENEW TO PL W/ 20 CU WYED W/ 585 (SEPARATE SERVICES)
564 BERESFORD AVE RESIDENTIAL	16 LEAD	12 LEAD	2.44 EWL E CELLAR 64.94 WML NASSAU	65.85 WML NASSAU	RENEW TO PL W/ 20 CU WYED W/ 586 (SEPARATE SERVICES)
565 BERESFORD AVE RESIDENTIAL	-	-	3.98 EHL 39.02 E 1ST HYD W NASSAU	0.3 E S/C 563	RENEW TO PL W/ 20 CU WYED W/ 583 (SEPARATE SERVICES)
566 BERESFORD AVE RESIDENTIAL	-	-	-	-	RENEW TO PL W/ 20 CU WYED W/ 584 (SEPARATE SERVICES)
567 BERESFORD AVE RESIDENTIAL	20 COPPER	20 COPPER	2.44 WEL HSE 83.84 WML NASSAU	SAME AS S/C	RECONNECT SERVICE
568 BERESFORD AVE RESIDENTIAL	-	-	2.74 EWL HOUSE 79.57 WML NASSAU	80.49 WML NASSAU	RENEW TO PL W/ 20 CU WYED W/ 570 (SEPARATE SERVICES)
569 BERESFORD AVE RESIDENTIAL	20 COPPER	12 COPPER	OPP EL HSE 90.55 W NASSAU	0.61 E S/C	RECONNECT SERVICE
570 BERESFORD AVE RESIDENTIAL	-	-	2.44 EWL HOUSE 568 79.57 WML NASSAU	80.49 WML NASSAU	RENEW TO PL W/ 20 CU WYED W/ 588 (SEPARATE SERVICES)
571 BERESFORD AVE RESIDENTIAL	20 COPPER	12 COPPER	2.5 E/EBL 0.50 E/ELL	1.37 E S/C	RECONNECT SERVICE
572 BERESFORD AVE RESIDENTIAL	20 COPPER	12 COPPER	0.15 EWL HSE 98.48 WML NASSAU	SAME AS S/C	RENEW TO PL W/ 20 CU WYED W/ 574 (SEPARATE SERVICES)
573 BERESFORD AVE RESIDENTIAL	-	-	-	-	RENEW TO PL W/ 20 CU WYED W/ 575 (SEPARATE SERVICES)
574 BERESFORD AVE RESIDENTIAL	-	-	-	-	RENEW TO PL W/ 20 CU WYED W/ 572 (SEPARATE SERVICES)
575 BERESFORD AVE RESIDENTIAL	-	-	-	-	RENEW TO PL W/ 20 CU WYED W/ 573 (SEPARATE SERVICES)
576 BERESFORD AVE RESIDENTIAL	20 COPPER	12 COPPER	3.25 W/EBL	OPP S/C	RECONNECT SERVICE
849 NASSAU ST S RESIDENTIAL	-	-	0.3 N/SHL 3.96 S OF HYDRANT	2.13 N S/C	OUTSIDE LIMITS

NOTE: VALVES TO BE INSTALLED COUNTERCLOCKWISE TO CLOSE



ENGINEERS GEOSCIENTISTS MANITOBA
Certificate of Authorization
Stantec Consulting Ltd.
No. 1301

LOCATION APPROVED UNDERGROUND STRUCTURES			
SUPV. U/G STRUCTURES COMMITTEE	DATE		
NOTE: LOCATION OF UNDERGROUND STRUCTURES AS SHOWN ARE BASED ON THE BEST INFORMATION AVAILABLE BUT NO GUARANTEE IS GIVEN THAT ALL EXISTING UTILITIES ARE SHOWN OR THAT THE GIVEN LOCATIONS ARE EXACT. CONFIRMATION OF EXISTENCE AND EXACT LOCATION OF ALL UTILITIES MUST BE OBTAINED FROM THE INDIVIDUAL UTILITIES BEFORE PROCEEDING WITH CONSTRUCTION.			
01	ISSUED FOR TENDER	2018.04.06	RS
NO.	REVISIONS	DATE	BY

Stantec

DESIGNED BY: RS
CHECKED BY: WB
DRAWN BY: SG
APPROVED BY: RS

SCALE: HORIZONTAL 1:250
VERTICAL 1:50

RELEASED FOR CONSTRUCTION
DATE: 2018 02 26
PLOT DATE: 2018 04 06

ENGINEER'S SEAL

PROVINCE OF MANITOBA
APR 6 2018
R.M. SHERLOCK
REGISTERED PROFESSIONAL ENGINEER
CONSULTANT DRAWING NUMBER
C-208

THE CITY OF WINNIPEG
WATER AND WASTE DEPARTMENT
ENGINEERING DIVISION

2018 WATERMAIN RENEWALS
CONTRACT 7
BERESFORD AVENUE
100 EEL DALY STREET TO
200 EEL DALY STREET

SHEET 10 OF 17
CITY DRAWING NUMBER
D-15057