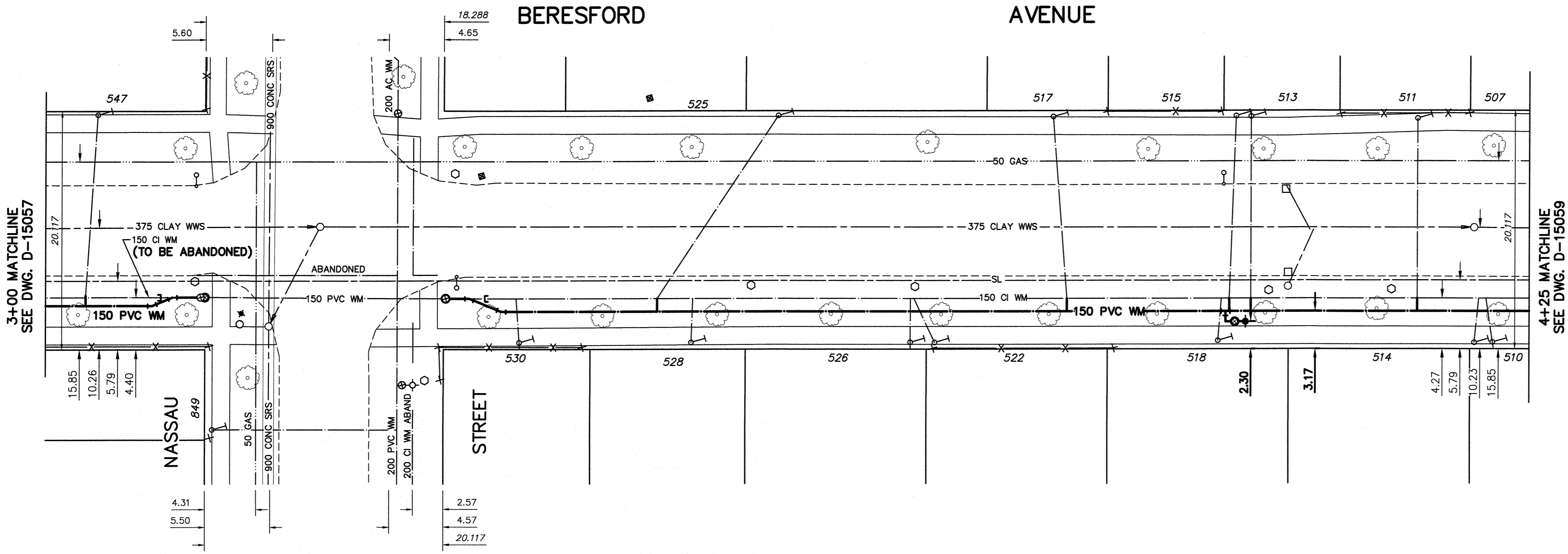
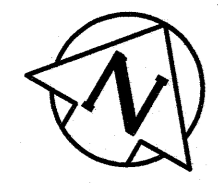


NOTE: CHAINAGES SHOWN ARE ALONG ϕ OF BERESFORD AVENUE

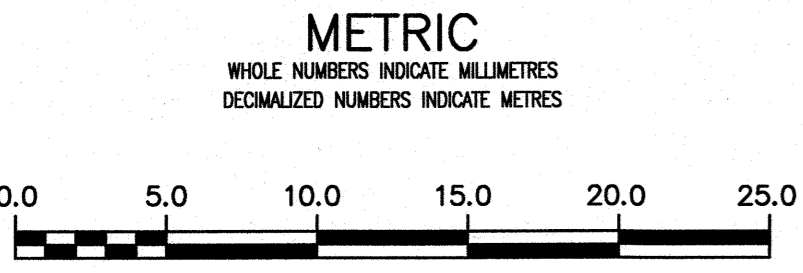


WATER SERVICE INFORMATION

ADDRESS	PIPE SIZE & MATERIAL (STREET)	PIPE SIZE & MATERIAL (PROP.)	SHORT & LONG MEASUREMENT	CORP. LOCATION	REMARKS
507 BERESFORD AVE	20 COPPER	12 LEAD	2.44 EEL HSE	OPP S/C	RECONNECT SERVICE
RESIDENTIAL			96.95 EEL NASSAU		
510 BERESFORD AVE	20 COPPER	20 COPPER	2 E WLL	0.7 W CS	RECONNECT SERVICE
RESIDENTIAL					
511 BERESFORD AVE	20 COPPER	12 LEAD	3.66 WEL HSE	SAME AS S/C	RECONNECT SERVICE
RESIDENTIAL			82.01 EEL NASSAU		
513 BERESFORD AVE	20 COPPER	20 COPPER	2.3 E W LL	OPP S/C	RECONNECT SERVICE
RESIDENTIAL					
514 BERESFORD AVE	20 COPPER	12 LEAD	1.5 E ELL	0.8 W CS	RECONNECT SERVICE
RESIDENTIAL					
515 BERESFORD AVE	20 COPPER	20 COPPER	0.5 W W LL	OPP S/C	RECONNECT SERVICE
RESIDENTIAL					
517 BERESFORD AVE	25 COPPER	20 COPPER	5.11 EWL HOUSE	0.99 E OF S/C	RECONNECT SERVICE
RESIDENTIAL			51.52 EEL OF NASSAU		
518 BERESFORD AVE	20 COPPER	20 COPPER	2.44 EEL HSE	OPP S/C	RECONNECT SERVICE
RESIDENTIAL			85.55 EEL NASSAU		
522 BERESFORD AVE	20 COPPER	20 COPPER	0.3 EWL HSE	1.83 W S/C	RECONNECT SERVICE
RESIDENTIAL			41.46 EEL NASSAU		
525 BERESFORD AVE	20 COPPER	20 COPPER	2.44 WEL NEW CHURCH	OPP S/C	RECONNECT SERVICE
COMMERCIAL			17.99 EEL NASSAU		
526 BERESFORD AVE	20 COPPER	12 LEAD	5.49 EEL HSE	OPP S/C	RECONNECT SERVICE
RESIDENTIAL			39.33 EEL NASSAU		
528 BERESFORD AVE	20 COPPER	20 COPPER	3 W/EEL	0.3 W S/C	RECONNECT SERVICE
RESIDENTIAL			9.20 E/WLL		
530 BERESFORD AVE	-	-	-	-	RECONNECT SERVICE
RESIDENTIAL					
547 BERESFORD AVE	-	-	-	-	RECONNECT SERVICE
RESIDENTIAL					
849 NASSAU ST S	-	20 COPPER	0.3 N/SHL	2.13 N S/C	OUTSIDE LIMITS
RESIDENTIAL			3.96 S OF HYDRANT		

* SERVICES TO BE RENEWED TO R

NOTE: VALVES TO BE INSTALLED COUNTERCLOCKWISE TO CLOSE



ENGINEERS GEOSCIENTISTS MANITOBA
 Certificate of Authorization
 Stantec Consulting Ltd.
 No. 1301

LOCATION APPROVED UNDERGROUND STRUCTURES			
SUPV. U/G STRUCTURES COMMITTEE	DATE		
NOTE: LOCATION OF UNDERGROUND STRUCTURES AS SHOWN ARE BASED ON THE BEST INFORMATION AVAILABLE BUT NO GUARANTEE IS GIVEN THAT ALL EXISTING UTILITIES ARE SHOWN OR THAT THE GIVEN LOCATIONS ARE EXACT. CONFIRMATION OF EXISTENCE AND EXACT LOCATION OF ALL SERVICES MUST BE OBTAINED FROM THE INDIVIDUAL UTILITIES BEFORE PROCEEDING WITH CONSTRUCTION.			
01	ISSUED FOR TENDER	2018.04.06	RS
NO.	REVISIONS	DATE	BY

Stantec

DESIGNED BY	RS	CHECKED BY	WB
DRAWN BY	SG	APPROVED BY	RS
SCALE:	HORIZONTAL 1:250 VERTICAL 1:50		
DATE	2018 02 26		
PLLOT DATE:	2018 04 06		

ENGINEER'S SEAL
 PROVINCE OF MANITOBA
 APRIL 6/18
 R. SHEPLOCK
 MEMBER 24045
 REGISTERED PROFESSIONAL ENGINEER
 CONSULTANT DRAWING NUMBER
 C-209

THE CITY OF WINNIPEG
 WATER AND WASTE DEPARTMENT
 ENGINEERING DIVISION

2018 WATERMAIN RENEWALS
 CONTRACT 7
 BERESFORD AVENUE
 200 EEL DALY STREET TO
 91.44 EEL NASSAU STREET

SHEET 11 OF 17
 CITY DRAWING NUMBER
 D-15058