

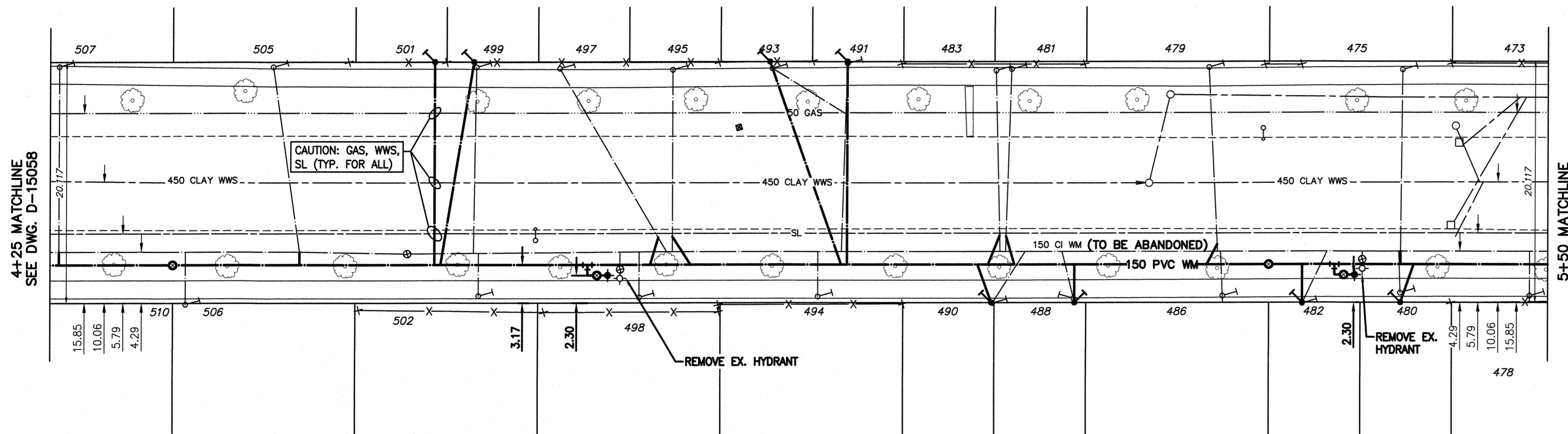
NOTE: CHAINAGES SHOWN ARE ALONG ϕ OF BERESFORD AVENUE

BERESFORD AVENUE

WATER SERVICE INFORMATION

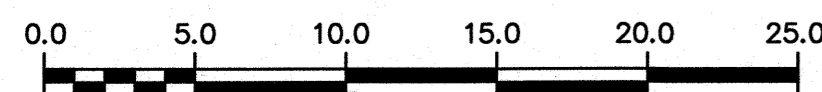
ADDRESS	PIPE SIZE & MATERIAL (STREET)	PIPE SIZE & MATERIAL (PROP.)	SHORT & LONG MEASUREMENT	CORP. LOCATION	REMARKS
473 BERESFORD AVE	20 COPPER	12 COPPER	0.61 EEL HSE	OPP S/C	RECONNECT SERVICE
475 BERESFORD AVE	20 COPPER	12 COPPER	60.87 WML OSBORNE	OPP S/C	RECONNECT SERVICE
476 BERESFORD AVE	20 COPPER	12 COPPER	2.59 EEL HSE	OPP S/C	RECONNECT SERVICE
477 BERESFORD AVE	20 COPPER	12 COPPER	73.32 WML OSBORNE	OPP S/C	RECONNECT SERVICE
478 BERESFORD AVE	20 COPPER	12 COPPER	4.57 EWL OF HOUSE	OPP S/C	RECONNECT SERVICE
479 BERESFORD AVE	20 COPPER	12 COPPER	54.42 WML OF OSBORNE	0.61 E S/C	RECONNECT SERVICE
480 BERESFORD AVE	20 COPPER	12 COPPER	2.44 EEL HSE	73.17 WML OSBORNE	RENEW TO PL W/ 20 CU
481 BERESFORD AVE	20 COPPER	12 COPPER	89.02 WML OSBORNE	OPP S/C	RECONNECT SERVICE
482 BERESFORD AVE	20 COPPER	12 COPPER	2.44 EWL HSE 480	OPP	RENEW TO PL W/ 20 CU
483 BERESFORD AVE	20 COPPER	12 COPPER	73.78 WML OSBORNE	OPP	RENEW TO PL W/ 20 CU
484 BERESFORD AVE	20 COPPER	12 COPPER	0.91 EWL OF HOUSE	OPP	RECONNECT SERVICE
485 BERESFORD AVE	20 COPPER	12 COPPER	106.1 WML OF OSBORNE	OPP	RECONNECT SERVICE
486 BERESFORD AVE	20 COPPER	12 COPPER	2.44 L/R H/L	OPP	RECONNECT SERVICE
487 BERESFORD AVE	20 COPPER	12 COPPER	57.01 FROM HYD @ #498	OPP	RECONNECT SERVICE
488 BERESFORD AVE	20 COPPER	12 COPPER	0.61 EEL OF HOUSE	0.91 E S/C	RECONNECT SERVICE
489 BERESFORD AVE	20 COPPER	12 COPPER	107.47 WML OF OSBORNE	0.46 W S/C	RECONNECT SERVICE
490 BERESFORD AVE	20 COPPER	12 COPPER	1.22 EEL HSE	0.91 W S/C 488	RENEW TO PL W/ 20 CU
491 BERESFORD AVE	20 COPPER	12 COPPER	48.32 E 1ST HYD W OSBORN	0.91 W S/C 488	RENEW TO PL W/ 20 CU
492 BERESFORD AVE	20 COPPER	12 COPPER	0.46 WEL HSE	0.91 W S/C 488	RENEW TO PL W/ 20 CU
493 BERESFORD AVE	20 COPPER	12 COPPER	37.96 E 1ST HYD W OSBORN	0.91 W S/C 488	RENEW TO PL W/ 20 CU
494 BERESFORD AVE	20 COPPER	12 COPPER	0.15 WEL OF 488	0.91 W S/C 488	RENEW TO PL W/ 20 CU
495 BERESFORD AVE	20 COPPER	12 COPPER	1.22 EEL HSE	0.91 W S/C 488	RENEW TO PL W/ 20 CU
496 BERESFORD AVE	20 COPPER	12 COPPER	38.26 E 1ST HYD W OSBORN	0.91 W S/C 488	RENEW TO PL W/ 20 CU
497 BERESFORD AVE	20 COPPER	12 COPPER	119.82 WML OSBORNE	SAME AS S/C	RENEW TO PL W/ 20 CU
498 BERESFORD AVE	20 COPPER	12 COPPER	0.91 EWL OF E CELLAR 491	RECONNECT SERVICE	RENEW TO PL W/ 20 CU
499 BERESFORD AVE	20 COPPER	12 COPPER	119.82 WML OSBORNE	RECONNECT SERVICE	RENEW TO PL W/ 20 CU
500 BERESFORD AVE	20 COPPER	12 COPPER	119.82 WML OSBORNE	RECONNECT SERVICE	RENEW TO PL W/ 20 CU
501 BERESFORD AVE	20 COPPER	12 COPPER	119.82 WML OSBORNE	RECONNECT SERVICE	RENEW TO PL W/ 20 CU
502 BERESFORD AVE	20 COPPER	12 COPPER	119.82 WML OSBORNE	RECONNECT SERVICE	RENEW TO PL W/ 20 CU
503 BERESFORD AVE	20 COPPER	12 COPPER	119.82 WML OSBORNE	RECONNECT SERVICE	RENEW TO PL W/ 20 CU
504 BERESFORD AVE	20 COPPER	12 COPPER	119.82 WML OSBORNE	RECONNECT SERVICE	RENEW TO PL W/ 20 CU
505 BERESFORD AVE	20 COPPER	12 COPPER	119.82 WML OSBORNE	RECONNECT SERVICE	RENEW TO PL W/ 20 CU
506 BERESFORD AVE	20 COPPER	12 COPPER	119.82 WML OSBORNE	RECONNECT SERVICE	RENEW TO PL W/ 20 CU
507 BERESFORD AVE	20 COPPER	12 COPPER	119.82 WML OSBORNE	RECONNECT SERVICE	RENEW TO PL W/ 20 CU
510 BERESFORD AVE	20 COPPER	12 COPPER	119.82 WML OSBORNE	RECONNECT SERVICE	RENEW TO PL W/ 20 CU

* SERVICES TO BE RENEWED TO R



NOTE: VALVES TO BE INSTALLED COUNTERCLOCKWISE TO CLOSE

METRIC
WHOLE NUMBERS INDICATE MILLIMETRES
DECIMALIZED NUMBERS INDICATE METRES



**ENGINEERS
GEOSCIENTISTS
MANITOBA**
Certificate of Authorization
Stantec Consulting Ltd.
No. 1301

LOCATION APPROVED
UNDERGROUND STRUCTURES

SUPV. U/G STRUCTURES COMMITTEE DATE
NOTE:
LOCATION OF UNDERGROUND STRUCTURES AS SHOWN ARE BASED ON THE BEST INFORMATION AVAILABLE BUT NO GUARANTEE IS GIVEN THAT ALL EXISTING UTILITIES ARE SHOWN OR THAT THE GIVEN LOCATIONS ARE EXACT. CONFIRMATION OF EXISTENCE AND EXACT LOCATION OF ALL SERVICES MUST BE OBTAINED FROM THE INDIVIDUAL UTILITIES BEFORE PROCEEDING WITH CONSTRUCTION.

B.M. 53-21 N.E. Cor. Beresford Ave. & Nassau St. S., Tblt. In S. Conc. foundation of No. 525 Beresford Ave., 1.2 m E. & 0.2 m below ELEV. 232.577m brick from the most S. Wy. Cor. of Bldg. (Roseade United Church).



DESIGNED BY RS CHECKED BY WB
DRAWN BY SG APPROVED BY RS
SCALE:
HORIZONTAL 1:250
VERTICAL 1:50
DATE 2018 02 26

NO.	ISSUED FOR TENDER	DATE	BY
01	ISSUED FOR TENDER	2018.04.06	RS

ENGINEER'S SEAL
PROVINCE OF MANITOBA
APRIL 4/18
D.M. SHERLOCK
JUNE 2018
REGISTERED PROFESSIONAL ENGINEER
CONSULTANT DRAWING NUMBER
C-210

THE CITY OF WINNIPEG
WATER AND WASTE DEPARTMENT
ENGINEERING DIVISION

2018 WATERMAIN RENEWALS
CONTRACT 7
BERESFORD AVENUE
91.44 EEL NASSAU STREET TO
216.44 EEL NASSAU STREET

SHEET 12 OF 17
CITY DRAWING NUMBER
D-15059