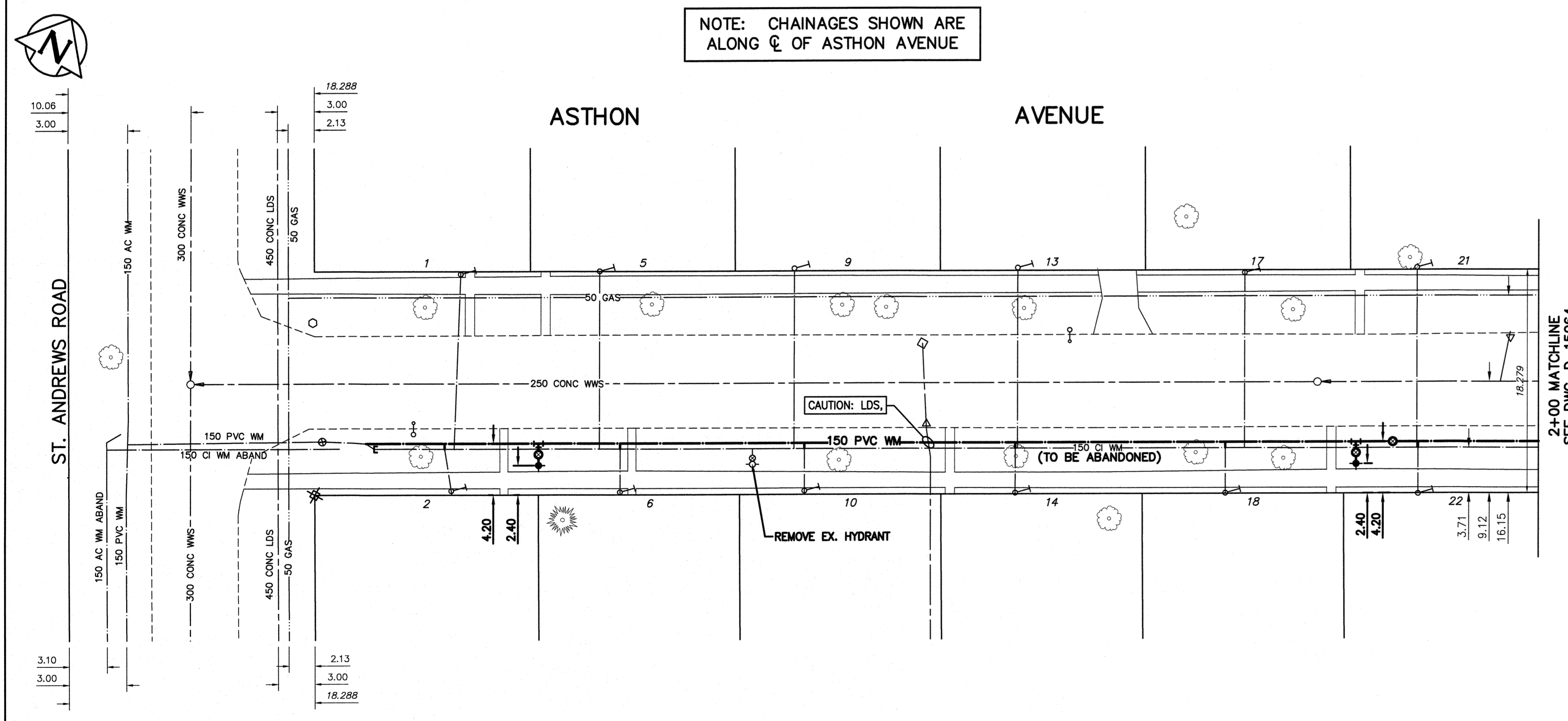


NOTE: CHAINAGES SHOWN ARE ALONG ϕ OF ASTHON AVENUE



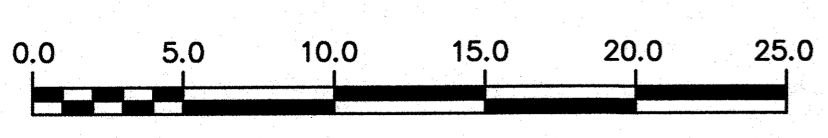
WATER SERVICE INFORMATION

ADDRESS	PIPE SIZE & MATERIAL (STREET)	PIPE SIZE & MATERIAL (PROP.)	SHORT & LONG MEASUREMENT	CORP. LOCATION	REMARKS
1 ASHTON AVE	-	20	0.91 EEHL IN SD/WK	-	RECONNECT SERVICE
2 ASHTON AVE	-	COPPER	-	-	RECONNECT SERVICE
3 ASHTON AVE	20	20	3.66 WEHL	0.30 W SC	RECONNECT SERVICE
4 ASHTON AVE	-	COPPER	-	-	RECONNECT SERVICE
5 ASHTON AVE	-	20	4.12 EWHL	-	RECONNECT SERVICE
6 ASHTON AVE	-	20	8.23 WEHL	-	RECONNECT SERVICE
7 ASHTON AVE	-	COPPER	-	-	RECONNECT SERVICE
8 ASHTON AVE	-	20	3 E/WLL	-	RECONNECT SERVICE
9 ASHTON AVE	-	COPPER	-	-	RECONNECT SERVICE
10 ASHTON AVE	-	20	2.74 EWHL	-	RECONNECT SERVICE
11 ASHTON AVE	-	COPPER	-	-	RECONNECT SERVICE
12 ASHTON AVE	-	20	3.81 EWHL	-	RECONNECT SERVICE
13 ASHTON AVE	-	COPPER	-	-	RECONNECT SERVICE
14 ASHTON AVE	-	20	4.57 EWHL	-	RECONNECT SERVICE
15 ASHTON AVE	-	COPPER	-	-	RECONNECT SERVICE
16 ASHTON AVE	-	20	6.4 EWHL	-	RECONNECT SERVICE
17 ASHTON AVE	-	COPPER	-	-	RECONNECT SERVICE
18 ASHTON AVE	-	20	5.34 EWHL	-	RECONNECT SERVICE
19 ASHTON AVE	-	COPPER	-	-	RECONNECT SERVICE
20 ASHTON AVE	-	20	3.81 EWHL	-	RECONNECT SERVICE
21 ASHTON AVE	-	COPPER	-	-	RECONNECT SERVICE
22 ASHTON AVE	-	20	3.96 EWHL	-	RECONNECT SERVICE

* SERVICES TO BE RENEWED TO ϕ

NOTE: ALL VALVES TO BE INSTALLED COUNTERCLOCKWISE TO CLOSE

METRIC
WHOLE NUMBERS INDICATE MILLIMETRES
DECIMALIZED NUMBERS INDICATE METRES



ENGINEERS GEOSCIENTISTS MANITOBA
Certificate of Authorization
Stantec Consulting Ltd.
No. 1301

LOCATION APPROVED
UNDERGROUND STRUCTURES

SUPV. U/G STRUCTURES COMMITTEE DATE

NOTE:
LOCATION OF UNDERGROUND STRUCTURES AS SHOWN ARE BASED ON THE BEST INFORMATION AVAILABLE BUT NO GUARANTEE IS GIVEN THAT ALL EXISTING UTILITIES ARE SHOWN OR THAT THE GIVEN LOCATIONS ARE EXACT. CONFIRMATION OF EXISTENCE AND EXACT LOCATION OF ALL SERVICES MUST BE OBTAINED FROM THE INDIVIDUAL UTILITIES BEFORE PROCEEDING WITH CONSTRUCTION.

B.M. 54-30 84R735 - N.E. Cor. of Hull Ave. & St. George Rd., Tblt. on top of 0.05 m dia. x 2.4 m iron pipe, 4.3 m S. of N.L. of Hull Ave. & 0.3 m W. of E.L. of St. George Rd.

NO.	REVISIONS	DATE	BY
01	ISSUED FOR TENDER	2018.04.06	RS

Stantec

DESIGNED BY: RS
DRAWN BY: SG

CHECKED BY: WB
APPROVED BY: RS

SCALE:
HORIZONTAL 1:250
VERTICAL 1:50

RELEASED FOR CONSTRUCTION
DATE: 2018 02 26

PLOT DATE: 2018 04 06

ENGINEER'S SEAL

PROVINCE OF MANITOBA
APRIL 14 2018
RAY SHEPHERD
REGISTERED PROFESSIONAL ENGINEER
NUMBER 24045

CONSULTANT DRAWING NUMBER
C-214

THE CITY OF WINNIPEG
WATER AND WASTE DEPARTMENT
ENGINEERING DIVISION

2018 WATERMAIN RENEWALS
CONTRACT 7
ASTHON AVENUE
ST. ANDREWS ROAD TO
100 EEL ST. ANDREWS ROAD

SHEET 16 OF 17
CITY DRAWING NUMBER
D-15063