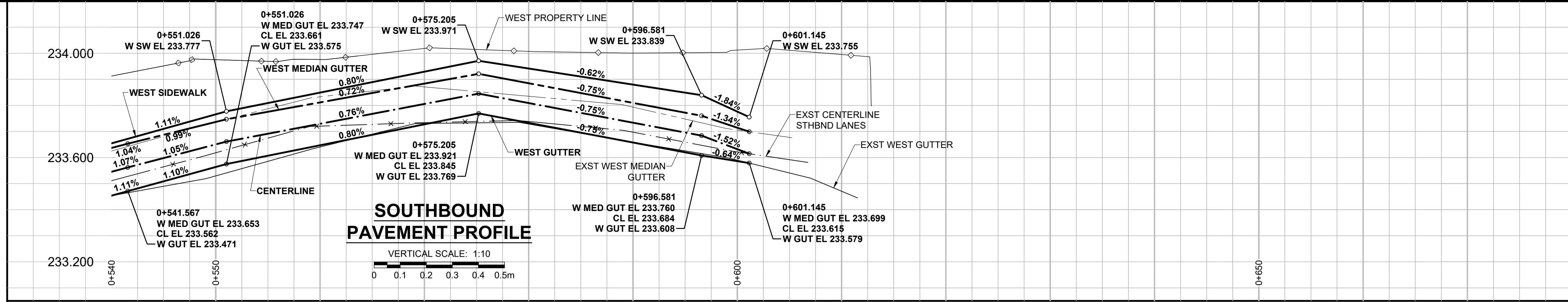
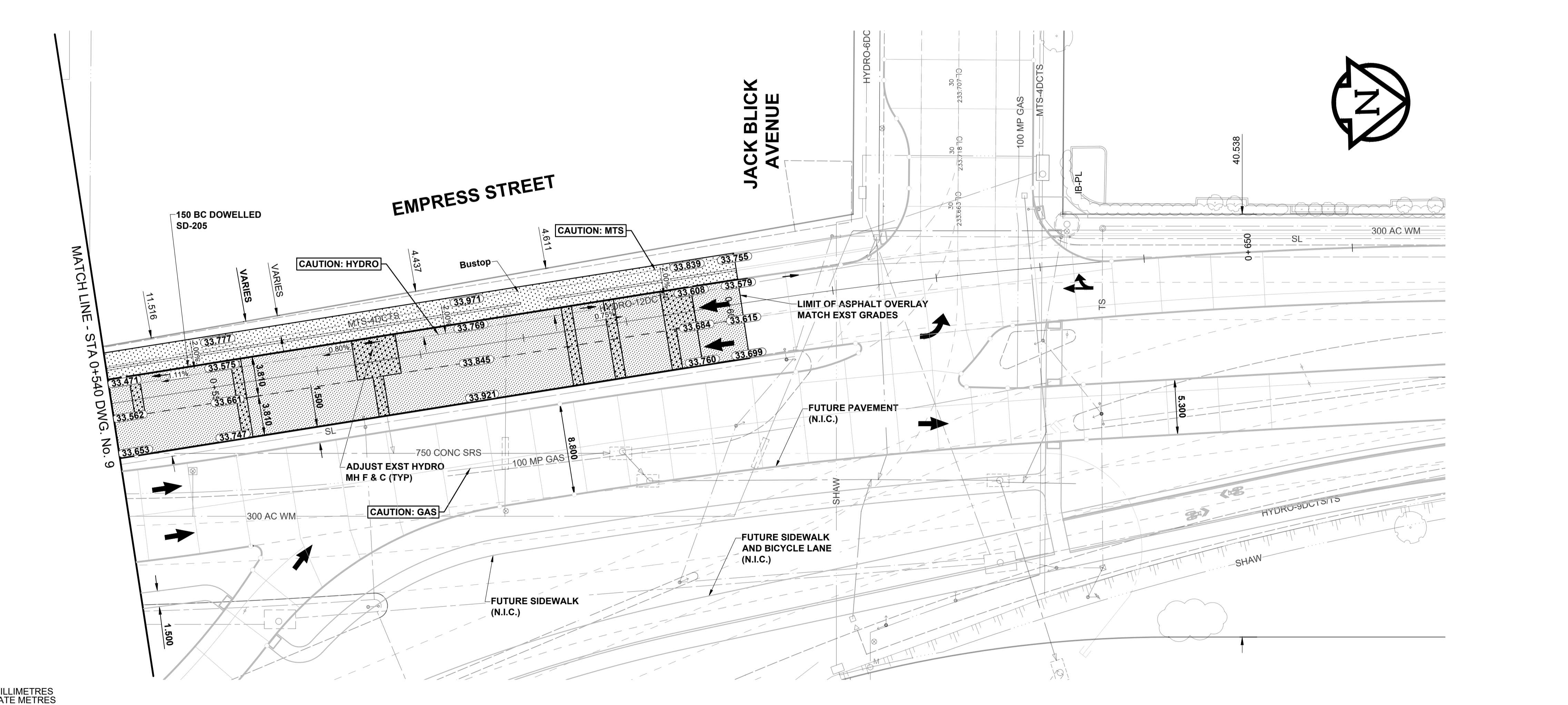


O:\Winnipeg\Proj\160034-10-Empr-Rehab-PP-10.dwg  
 O:\Winnipeg\Proj\160034-10-Empr-Rehab-PP-10.dwg  
 Project: 3/5/2018 2:26 PM by Ddoszpod  
 Last Saved: 3/5/2018 2:16 PM by Ddoszpod  
 ISO A1 - 564mm x 841mm



CHAINAGE ALONG WEST GUTTER LINE



- NOTES**
- ADJUST MH AND CB RIMS TO NEW GRADES.
  - CONTRACTOR TO REGRADE/RENEW EXST PRIVATE SIDEWALKS TO LIMITS AS SHOWN. SIDEWALKS TO BE RENEWED WITH CONCRETE UNLESS NOTED OTHERWISE.
  - CONTRACTOR TO TAKE PRECAUTIONARY STEPS AS OUTLINED IN THE SPECIFICATIONS TO PROTECT EXISTING TREES WITHIN THE LIMITS OF CONSTRUCTION FROM DAMAGE FROM CONSTRUCTION ACTIVITIES.
  - MODIFIED BARRIER CURB TO BE CONSTRUCTED AT ALL INTERSECTION RADII, BACK LANE RADII AND BULLNOSES.
  - CONTRACTOR TO CONFIRM THE LOCATION OF ALL UTILITIES/SERVICES IN THE FIELD PRIOR TO CONSTRUCTION TO OBTAIN GEODETIC ELEVATIONS.
  - CB SD-024 OFFSETS ARE DIMENSIONED TO BOC. CB SD-025 OFFSETS ARE DIMENSIONED O/C.
  - ALL DIMENSIONS TO BACK OF CURB AND THEORETICAL BACK OF CURB.

**SECTION LEGEND**



BID OPPORTUNITY No. 38-2018

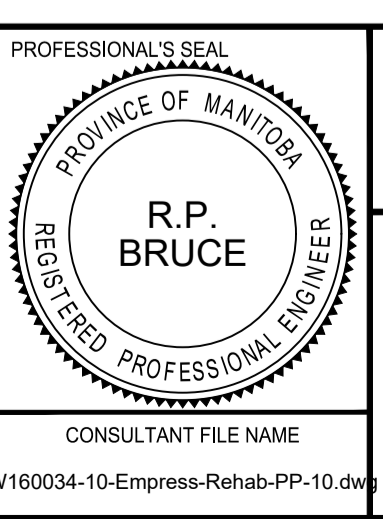
**METRIC**  
WHOLE NUMBERS INDICATE MILLIMETRES  
DECIMALIZED NUMBERS INDICATE METRES

EXISTING	LEGEND - PLAN	NEW	EXISTING	LEGEND - PLAN	NEW	EXISTING	LEGEND - PLAN	NEW
(Symbol)	GAS	(Symbol)	(Symbol)	MANHOLE	(Symbol)	(Symbol)	CONCRETE PAVEMENT	(Symbol)
(Symbol)	MTS / PEDESTAL	(Symbol)	(Symbol)	CATCH BASIN / CATCH PIT	(Symbol)	(Symbol)	CONC SIDEWALK / MEDIAN	(Symbol)
(Symbol)	HYDRO / CABINET	(Symbol)	(Symbol)	CURB INLET WITH BOX	(Symbol)	(Symbol)	ASPHALT PAVEMENT	(Symbol)
(Symbol)	CATV / FIBRE OPTIC	(Symbol)	(Symbol)	TREE	(Symbol)	(Symbol)	PAVING STONE	(Symbol)
(Symbol)	TRAFFIC SIGNALS / PIT	(Symbol)	(Symbol)	TH-12 TEST HOLE	(Symbol)	(Symbol)	GRAVEL	(Symbol)
(Symbol)	LAND DRAINAGE SEWER	(Symbol)	(Symbol)	PROPERTY LINE	(Symbol)	(Symbol)	RAMP CURB	(Symbol)
(Symbol)	SANITARY/COMBINED SEWER	(Symbol)	(Symbol)	SURVEY BAR	(Symbol)	(Symbol)	PLANING / REMOVAL	(Symbol)
(Symbol)	CB LEAD / SSP / DCP	(Symbol)	(Symbol)	FENCE	(Symbol)	(Symbol)		(Symbol)
(Symbol)	WATER MAIN	(Symbol)	(Symbol)	BOC / EDGE OF PAVEMENT	(Symbol)	(Symbol)		(Symbol)
(Symbol)	SUBDRAIN	(Symbol)	(Symbol)	ELEVATION	(Symbol)	(Symbol)		(Symbol)
(Symbol)	DITCH	(Symbol)	(Symbol)	TRAFFIC SIGN	(Symbol)	(Symbol)		(Symbol)

**LOCATION APPROVED**  
UNDERGROUND STRUCTURES

SUPR, U/G STRUCTURES COMMITTEE DATE: \_\_\_\_\_  
NOTE: LOCATION OF UNDERGROUND STRUCTURES AS SHOWN ARE BASED ON THE BEST INFORMATION AVAILABLE BUT NO GUARANTEE IS GIVEN THAT ALL EXISTING UTILITIES ARE SHOWN OR THAT THE GIVEN LOCATIONS ARE EXACT. CONFIRMATION OF EXISTENCE AND EXACT LOCATION OF ALL SERVICES MUST BE OBTAINED FROM THE INDIVIDUAL UTILITIES BEFORE PROCEEDING WITH CONSTRUCTION.

NO.	REVISIONS	DATE	BY
B	ISSUED FOR TENDER	18/03/09	RPB
A	ISSUED FOR CLIENT REVIEW	18/01/31	RPB



**THE CITY OF WINNIPEG**  
PUBLIC WORKS DEPARTMENT  
ENGINEERING DIVISION

**2018 REGIONAL STREET REHABILITATION**  
EMPRESS STREET  
PORTAGE AVENUE TO JACK BLICK AVENUE;  
WESTWAY AND EASTWAY  
EMPRESS STREET  
HORIZONTAL AND VERTICAL ALIGNMENT  
STA 0+540 TO JACK BLICK AVENUE

CITY DRAWING NUMBER	P-3494-10
SHEET	10 OF 14
DRAWING No.	REV
	10 B

O:\Winnipeg\Proj\160034-10-Empr-Rehab-PP-10.dwg  
 Project: 3/5/2018 2:26 PM by Ddoszpod  
 Last Saved: 3/5/2018 2:16 PM by Ddoszpod  
 ISO A1 - 564mm x 841mm