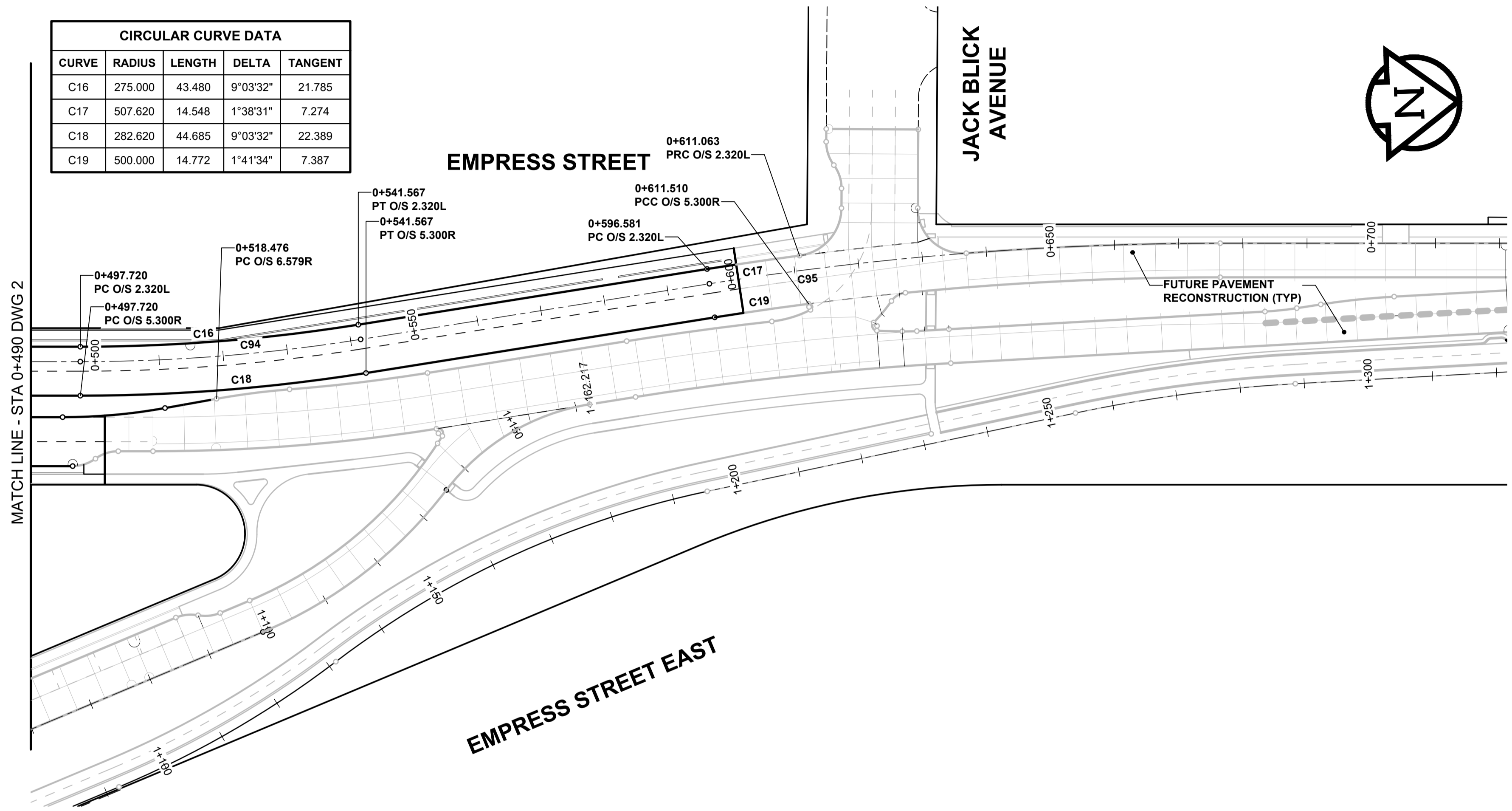


WEST GUTTER LINE CONTROL POINT COORDINATES		
POINT/STATION	NORTHING	EASTING
PC 0+497.720	9431.775	10666.640
PT 0+541.567	9475.518	10664.395
PC 0+596.581	9530.066	10657.245
PT 0+676.474	9609.771	10653.155

WEST GUTTER LINE ALIGNMENT				
CIRCULAR CURVE DATA				
CURVE	RADIUS	LENGTH	DELTA	TANGENT
C94	277.320	43.847	9°03'32"	21.969
C95	505.300	79.893	9°03'32"	40.030

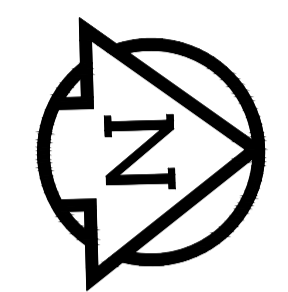


CIRCULAR CURVE DATA				
CURVE	RADIUS	LENGTH	DELTA	TANGENT
C16	275.000	43.480	9°03'32"	21.785
C17	507.620	14.548	1°38'31"	7.274
C18	282.620	44.685	9°03'32"	22.389
C19	500.000	14.772	1°41'34"	7.387

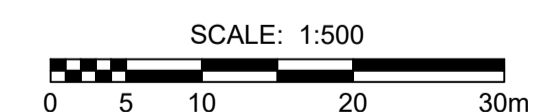
MATCH LINE - STA 0+490 DWG 2

EMPRESS STREET EAST

JACK BLICK AVENUE



METRIC
 WHOLE NUMBERS INDICATE MILLIMETRES
 DECIMALIZED NUMBERS INDICATE METRES



BID OPPORTUNITY No. 38-2018

EXISTING	LEGEND - PLAN	NEW	EXISTING	LEGEND - PLAN	NEW	EXISTING	LEGEND - PLAN	NEW
---	GAS	---	○	MANHOLE	●	---	CONCRETE PAVEMENT	---
---	MTS / PEDESTAL	---	□	CATCH BASIN / CATCH PIT	■	---	CONC SIDEWALK / MEDIAN	---
---	HYDRO / CABINET	---	△	CURB INLET WITH BOX	▲	---	ASPHALT PAVEMENT	---
---	CATV / FIBRE OPTIC	---	○	TREE	○	---	PAVING STONE	---
---	TRAFFIC SIGNALS / PIT	---	⊕	TEST HOLE	⊕	---	GRAVEL	---
---	LAND DRAINAGE SEWER	---	TH-12	PROPERTY LINE	---	---	RAMP CURB	---
---	SANITARY/COMBINED SEWER	---	⊕	SURVEY BAR	⊕	---	PLANING / REMOVAL	---
---	CB LEAD / SSP / DCP	---	---	FENCE	---	---		---
---	WATER MAIN	---	---	BOC / EDGE OF PAVEMENT	---	---		---
---	SUBDRAIN	---	33.000	ELEVATION	(33.333)	---		---
---	DITCH	---	---	TRAFFIC SIGN	---	---		---

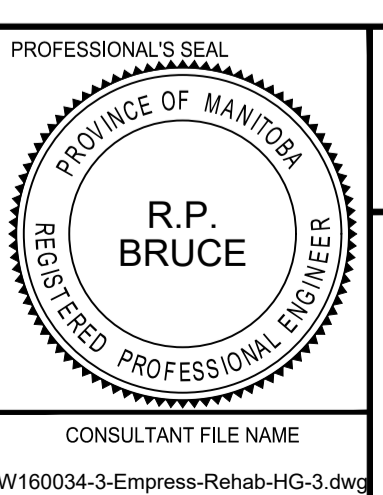
LOCATION APPROVED
 UNDERGROUND STRUCTURES

DATE: _____

NOTE:
 LOCATION OF UNDERGROUND STRUCTURES AS SHOWN ARE BASED ON THE BEST INFORMATION AVAILABLE BUT NO GUARANTEE IS GIVEN THAT ALL EXISTING UTILITIES ARE SHOWN OR THAT THE GIVEN LOCATIONS ARE EXACT. CONFIRMATION OF EXISTENCE AND EXACT LOCATION OF ALL SERVICES MUST BE OBTAINED FROM THE INDIVIDUAL UTILITIES BEFORE PROCEEDING WITH CONSTRUCTION.

No.	REVISIONS	DATE	BY
B	ISSUED FOR TENDER	18/03/09	RPB
A	ISSUED FOR CLIENT REVIEW	18/01/31	RPB

MORRISON HERSHFIELD	
DESIGNED BY: WRJ	CHECKED BY: RPB
DRAWN BY: DID	APPROVED BY: BWB
RELEASED FOR CONSTRUCTION	
HOR SCALE: 1:500	VERT SCALE: N/A
DATE: 18/03/09	DATE: _____



THE CITY OF WINNIPEG
 PUBLIC WORKS DEPARTMENT
 ENGINEERING DIVISION

2018 REGIONAL STREET REHABILITATION
 EMPRESS STREET
 PORTAGE AVENUE TO JACK BLICK AVENUE;
 WESTWAY AND EASTWAY
 EMPRESS STREET
 HORIZONTAL GEOMETRY
 STA 0+490 TO JACK BLICK

CITY DRAWING NUMBER: P-3494-3
 SHEET 3 OF 14
 DRAWING No. REV 3 B