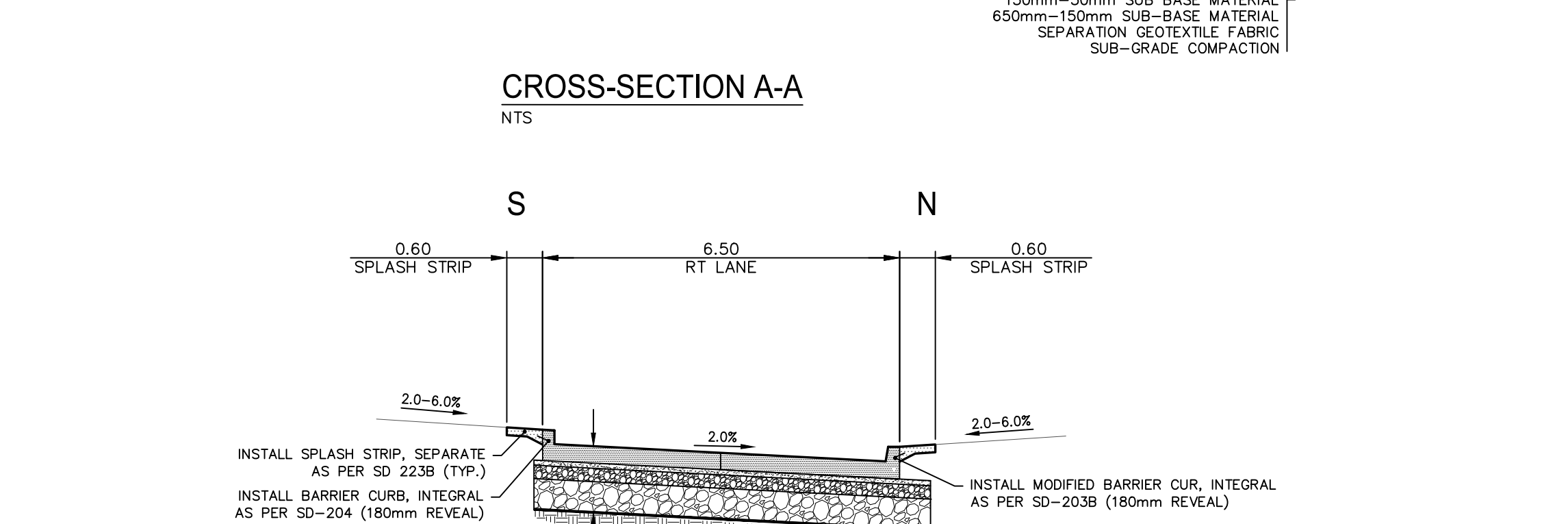
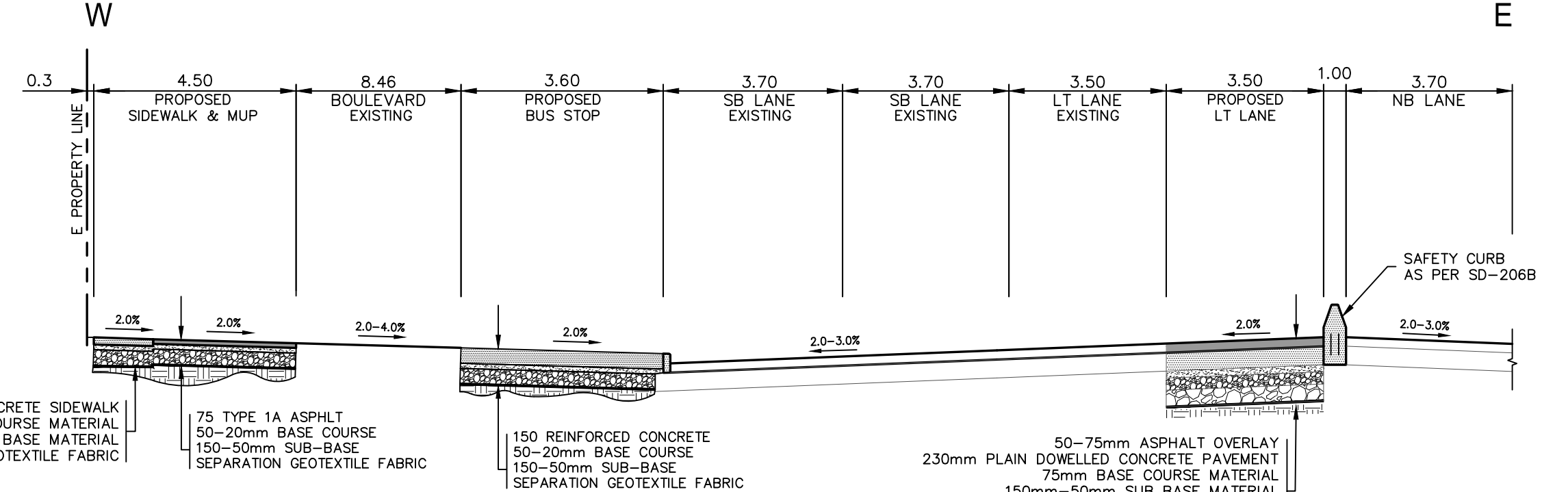
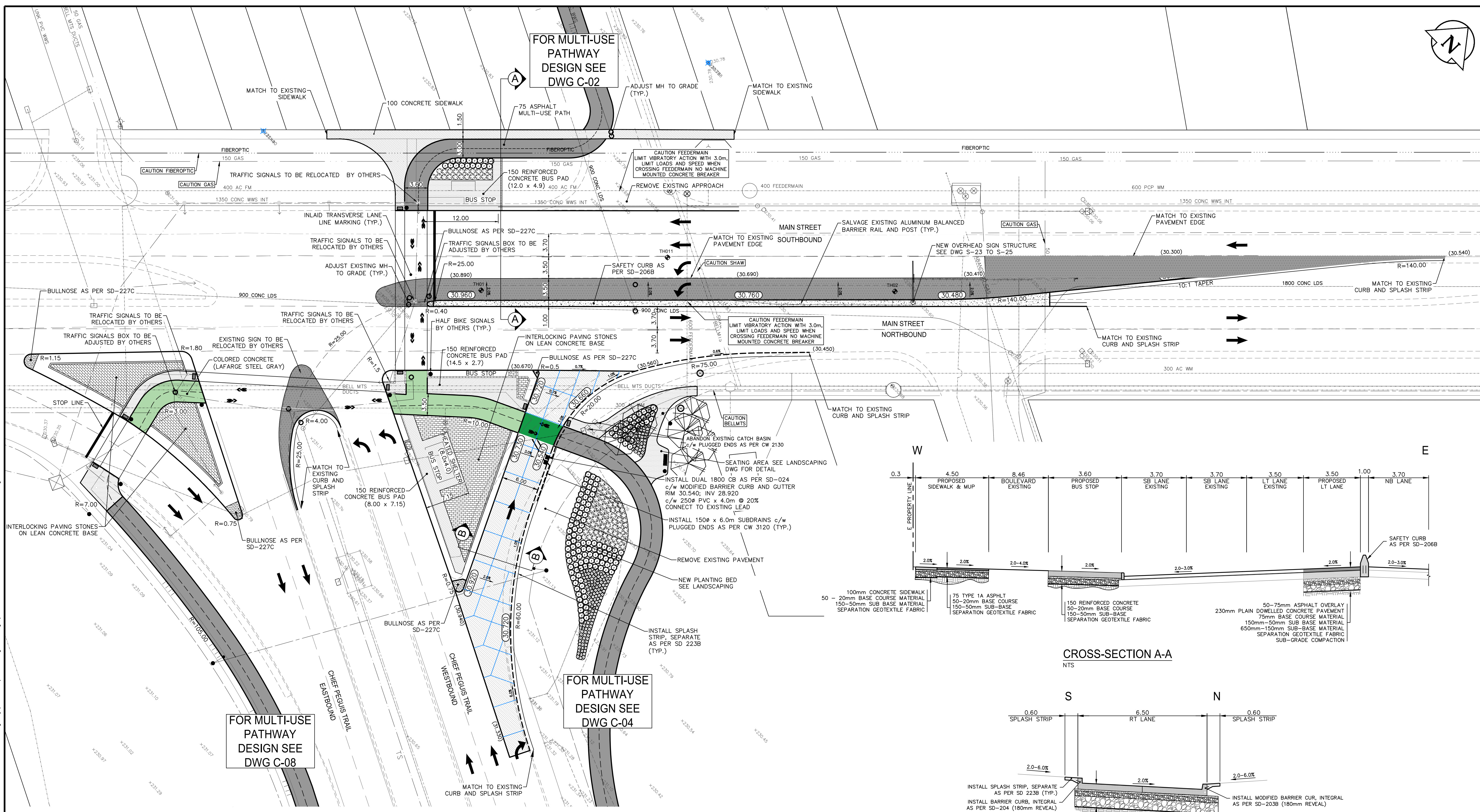


FOR MULTI-USE PATHWAY DESIGN SEE DWG C-02

FOR MULTI-USE PATHWAY DESIGN SEE DWG C-04

FOR MULTI-USE PATHWAY DESIGN SEE DWG C-08



- NOTES:**
1. ALL WORK AND MATERIALS TO BE IN ACCORDANCE WITH THE LATEST REVISION OF THE CITY OF WINNIPEG STANDARD CONSTRUCTION SPECIFICATIONS.
  2. CONTRACTOR TO CONFIRM THE LOCATION OF ALL UTILITIES/SERVICES IN THE FIELD PRIOR TO CONSTRUCTION.
  3. ALL ROADWAY DIMENSIONS SHOWN ARE TO BACK OF CURB.
  4. ADD 200.00 TO ABBREVIATED ELEVATIONS TO OBTAIN GEODETIC ELEVATION.
  5. MODIFIED BARRIER CURB TO BE CONSTRUCTED AT ALL INTERSECTION RADI AND BULLNOSES.
  6. CONTRACTORS TO TAKE PRECAUTIONARY STEPS TO PROTECT EXISTING TREES WITHIN THE LIMITS OF CONSTRUCTION FROM DAMAGE FROM CONSTRUCTION ACTIVITIES AS OUTLINED IN THE SPECIFICATIONS.
  7. LAMP STANDARDS, HYDRO POLES, AND ANCHORS THAT REQUIRE TEMPORARY SUPPORT, REMOVAL OR REPLACEMENT, TO BE DONE SO AT THE EXPENSE OF THE CONTRACTOR AS NECESSARY.
  8. ALL BOLLIVARDS TO BE SEEDED UNLESS OTHERWISE NOTED. LIMITS TO BE IDENTIFIED IN THE FIELD BY THE CONTRACT ADMINISTRATOR.
  9. ADJUST ALL WATER VALVES, HYDRANTS, MANHOLES, AND CATCH BASINS IN WORK AREA TO GRADE.
  10. CONTRACTOR TO MATCH EXISTING JOINT LAYOUT.

**LOCATIONS APPROVED UNDERGROUND STRUCTURES**

NO.	REVISIONS	DATE	BY
5			
4			
3	ISSUED FOR TENDER	23-02-18	DS
2	ISSUED FOR UG STRUCTURES REVIEW	26-01-18	VM
1	ISSUED FOR CLIENT REVIEW	11-01-18	VM

**wsp**

WSP Canada Group Limited  
Suite 111 - B3 Lombard Ave  
Winnipeg, MB R3B 3B1  
T: 204-943-3178  
F: 204-943-4948  
www.wsp.com

DESIGNED BY: JM/DS  
CHECKED BY: TP  
DRAWN BY: SB  
APPROVED BY: VM  
HORIZ. SCALE: 1:300  
VERTICAL: 1:300  
DATE: 19 OCT 2017

ENGINEER'S SEAL

**J.S.F. MAGNE**  
Member 31236

CONSULTANT ACAD. DWG. NO.  
17M-02091-00-C-26

**THE CITY OF WINNIPEG**  
PUBLIC WORKS DEPARTMENT  
ENGINEERING DIVISION

**CHIEF PEGUIS GREENWAY EXTENSION**  
MAIN STREET INTERSECTION IMPROVEMENT

CITY DRAWING NUMBER: 26 OF 26  
PLAN AND CROSS SECTIONS  
BID NO. 4-2018

**METRIC**  
WHOLE NUMBERS INDICATE MILLIMETRES  
DECIMALIZED NUMBERS INDICATE METRES

**ENGINEERS GEOSCIENTIST MANITOBA**  
Certificate of Authorization  
WSP Canada Group Limited  
No. 6657

**LEGEND**

EXISTING	LEGEND-PLAN	PROPOSED	EXISTING	LEGEND-PLAN	PROPOSED	EXISTING	LEGEND-PLAN	PROPOSED
○	MANHOLE	●	—	PROPERTY LINE	—	—	—	—
□	CATCH BASIN	■	—	WATER MAIN	—	—	—	—
△	CURB INLET	▽	—	LAND DRAINAGE SEWER	—	—	—	—
◇	UTILITIES ADJUSTED	△ ○	—	WASTE WATER SEWER	—	—	—	—
⊂	PLUG	⊃	—	HYDRO	—	—	—	—
⊕	HYDRANT	⊖	—	M.T.S.	—	—	—	—
⊗	VALVE	⊙	—	GAS	—	—	—	—
⊙	CURB STOP	⊚	—	SIGNALS	—	—	—	—
250.99	GROUND GRADE	○	—	BUSHES/TREES	—	—	—	—
(31.00)	PAVEMENT GRADE	(31.00)	—	LIGHT STANDARD OR TRAFFIC SIGNAL	—	—	—	—
	SWALE GRADE	(30.486)	—	DECORATIVE LIGHT	—	—	—	—
#111	CIVIC ADDRESS	⊙	—	HYDRO POLE & LIGHT STANDARD	—	—	—	—
	SLOPE		—	HYDRO POLE	—	—	—	—
	DIRECTION FLOW	→	—	CURB RAMP	—	—	—	—
	ANCHOR	⊕	—	DETECTABLE WARNING SURFACE TILE	—	—	—	—
	LEGEND-PLAN	PROPOSED	EXISTING	LEGEND-PLAN	PROPOSED	EXISTING	LEGEND-PLAN	PROPOSED

Feb 26, 2018 - 11:20am P:\2017\17M-02091-00 - Professional Consulting Services for Chief Peguis Greenway Extension from Main Street to Henderson Highway\WSP DWG\Detail Design Drawings\17M-02091-00\_C26-C28\_CPT\_Main Street - tab-C-26\_CPT\_Main Street.dwg